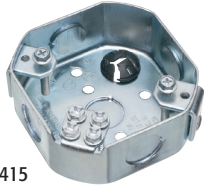


Steel, Octagonal Fan & Fixture Joist Mounting Boxes

Ceiling fan/fixture boxes mount directly to a joist for a super-secure installation. Two styles. Ships ready-to-install. For new work only.



FBS415



FBS415S

FEATURES AND BENEFITS

- No loose parts to misplace, totally self-contained!
- Combination hex/Phillips head screws for easy installation with power screwdrivers.
- FBS415/FBS420 are UL rated: 70 lb. fan, 200 lb. fixture; CSA rated: 50 lb. fan/fixture
- FBS415S/FBS420S are UL rated: 70 lb. fan/fixture; CSA rated: 50 lb. fan/fixture

Note: Install fan or fixture (not included) in accordance with manufacturer's instructions and all local applicable electrical codes, using the parked screws provided.

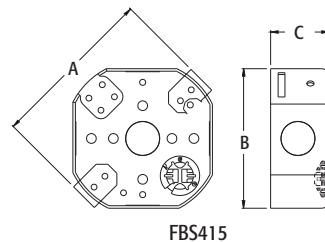
CATALOG NUMBER	UPC/DCI/NAED MFG #018997	DESCRIPTION / STYLE	UNIT PKG	STD PKG	DIM A	DIM B	DIM C	DIM D
FBS415	75204	1-1/2" Box Depth 14.6 Cu. In. Mounts Under Joist	25	25	4.250	3.572	1.500	-
FBS420	75200	2" Box Depth 20.0 Cu. In. Mounts Under Joist	25	25	4.250	3.572	2.000	-
FBS415S	75206	1-1/2" Box Depth 14.6 Cu. In. Mounts on Side of Joist	25	25	4.250	3.572	2.500	6.000
FBS420S	75202	2" Box Depth 20.0 Cu. In. Mounts on Side of Joist	25	25	4.250	3.572	2.500	6.000

Refer to chart on page R-18 for load ratings and number of single conductors.

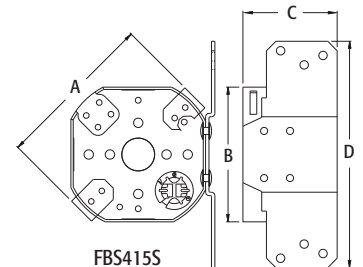
PATENTED.



E48106 LR49636

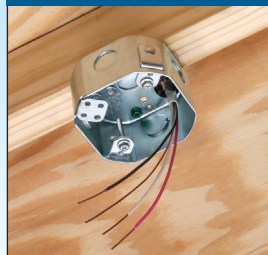


FBS415



FBS415S

FBS415/FBS420 Mount UNDER Joist



FBS415S/FBS420S Mount on SIDE of Joist



Each fan/fixture box includes...
 Installed NM cable connector, mud cover, multiple KOs, four installation screws parked-in-place (ready for installer), and two screws for fan/fixture bracket installation (screwed in place until removed by installer).