

SOLUTION DATA SHEET

EXTREME® CAT 6+ ENHANCED UTP SYSTEM

CAT 6 system featuring Leviton cable and component-rated connectivity

- Exceeds ANSI/TIA-568-C.2 CAT 6 and ISO/IEC 11801 Class E requirements for channel, link, and component performance to support IEEE 1000BASE-T networks
- Limited lifetime product and performance system warranty available when projects are installed by Leviton certified contractors
- Error-free performance up to 1 Gigabit Ethernet with full duplex transmission
- Provides additional performance margin to reliably support Gigabit Ethernet in high-noise environments
- Third-party verified by Intertek Testing Services (ETL)
- Provides bandwidth required for multimedia, broadband video, analog video, and other future applications
- Guaranteed cable balance improves overall performance and reduces emissions which results in reduced transmission errors

TYPICAL SYSTEM PERFORMANCE*

EXTREME® CAT 6 ENHANCED UTP SYSTEM CHANNEL TYPICAL MARGINS*		
	Margin vs. ANSI/TIA-568-C.2	Worst Case Performance at 250 MHz
Insertion Loss	5%	34.2 dB
NEXT	6 dB	39.1 dB
PSNEXT	6 dB	36.2 dB
ACR-F (ELFEXT)	8 dB	23.3 dB
PSACR-F (PSELFEXT)	9 dB	21.3 dB
Return Loss	3 dB	11.0 dB
ACR-N	7 dB	4.2 dB
PSACR-N	8 dB	2.2 dB

*All parameters comply with ANSI/TIA 568-C.2 CAT 6 and ISO/IEC 11801 Class E requirements across the entire frequency range. All values represent typical margins for 9 to 100 meter standards compliant channel configurations. Typical margin based on third-party lab verified testing, in-house testing, and field test data. Field-installed channel margins may vary based on the accuracy of the handheld tester, system design, and installation practices. Only Leviton approved testers may be used. All stated performance specifications are subject to the terms and conditions of the manufacturers warranties. Details at www.leviton.com.

RECOMMENDED FOR

Applications requiring optimal support for 1000BASE-T Ethernet with headroom

Network applications in data center, financial, health care, government, transportation, and education environments

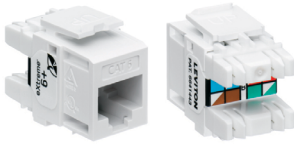
Networks with high-bandwidth utilization requirements

Power over Ethernet and PoE+ applications up to 30 watts

Any IP-based system requiring UTP cabling

Analog security applications using UTP cable





CONNECTORS

EXTREME® CAT 6+ COMPONENT-RATED QUICKPORT® CONNECTORS

- Exceed requirements for Category 6 described in ANSI/TIA-568-C.2 and Class E requirements described in ISO/IEC 11801
- Patented Retention Force Technology protects tines from damage from 4- or 6-pin plugs
- Circuit board technology for exceptional high-frequency operation
- Gas-tight insulation displacement contacts provide excellent conductor retention and resistance to surface contact oxidation for life of the system
- Pair Separation Tower design facilitates separation of conductors and minimizes untwisting
- Patented dual-layer wiring label simplifies punchdown and reduces rework
- 90 or 180 degree bi-directional entry eases cable bend radius in backboxes



PATCH PANELS

EXTREME CAT 6+ 110-STYLE AND QUICKPORT PATCH PANELS

- Exceed requirements for Category 6 described in ANSI/TIA-568-C.2 and Class E requirements described in ISO/IEC 11801
- Independently tested and verified by Intertek (ETL) to meet all TIA component, permanent link, and channel requirements
- Available in 110-Style and QuickPort flat, angled, recessed angled, recessed, and Zero-U configurations in 12-96 port counts
- Gas-tight insulation displacement contacts provide excellent conductor retention and resistance to surface contact oxidation for life of the system
- Include color codes for T568A/B wiring schemes



PATCH CORDS

EXTREME CAT 6+ SLIMLINE PATCH CORDS

- Verified by ETL for TIA Category 6 component requirements
- 24 AWG stranded for maximum flexibility
- Nominal outer diameter of .22" to reduce cable pathways in racks and cabinets
- SlimLine plug supports high-density patching and extraction with extended reach latch release
- Made-to-order custom lengths are quickly available for top-of-rack, end-of-row, or general network patching



CABLE

EXTREME CAT 6+ ENHANCED UTP CABLE

- Optimal support for Gigabit Ethernet with headroom
- Provides additional bandwidth for future applications
- ETL verified to exceed TIA/EIA-568-C.2 Category 6 standard
- Independently verified headroom guarantees ensure consistent performance
- Power sum characterization gives highest performance using existing applications
- Characterized to 550 MHz, 300 MHz greater than the standard
- Outer diameter 0.240" (6.10 mm), CMP
- FT4/Riser: cETLus listed, FT6/Plenum: cULus listed
- 23 AWG
- Manufactured in the U.S.

PART NUMBERS - Common part numbers shown. Many additional colors, lengths, and other options available. Contact customer service for details.

CONNECTORS

eXtreme CAT 6+ Component-Rated QuickPort Connector 61110-R*6

PATCH PANELS

eXtreme CAT 6+ Flat 110-Style Patch Panel 1RU 24-PORT 69586-A24 1RU 48-PORT 69586-A48 2RU 48-PORT 69587-U48 2RU 72-PORT

eXtreme CAT 6+ Angled 110-Style Patch Panel 69587-U48

Flat QuickPort Patch Panel+ 49255-H24 49255-Q48 49255-H48 49255-D72

Angled QuickPort Patch Panel+ 49256-H24 49256-D48 49256-H48 49256-D72

PATCH CORDS

eXtreme CAT 6+ SlimLine UTP Patch Cord 6D460-xx*

CABLE

eXtreme CAT 6+ Enhanced UTP Cable, Blue, 305m/1000ft Boxed Reel PLENUM EUT6P-MLB RISER EUT6R-MLB

eXtreme CAT 6+ Enhanced UTP Cable, White, 305m/1000ft Boxed Reel EUT6P-MWB EUT6R-MWB

* = Color: White (W), Lt. Almond (T), Ivory (I), Yellow (Y), Orange (O), Crimson (C), Dark Red (R), Purple (P), Blue (L), Green (V), Grey (G), Black (E), Brown (B)

+ = sold empty, load with 61110 connectors

xx = length 3, 5, 7, 10, 15, 20 feet ° = Color: White (W), Yellow (Y), Blue (L), Black (E), Red (R), Green (G), Grey (S)