

Locking-Type Photo Controls (120 - 285 Volts)



Locking-Type Photo Controls- Delayed Response Thermal Series

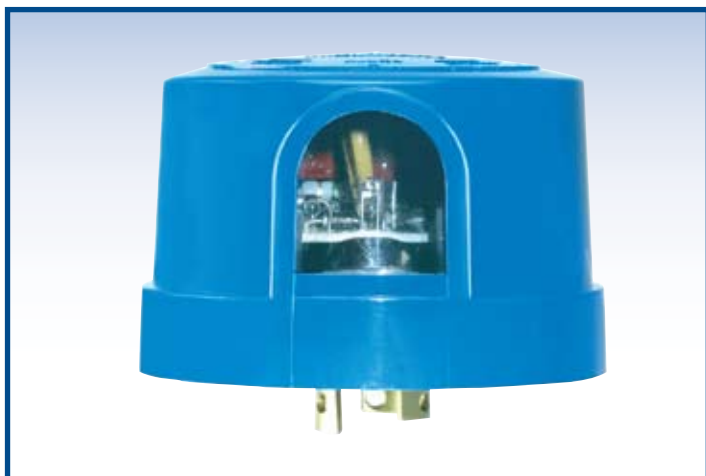
Built-in time delay prevents false cycling caused by lightning flashes or stray headlights.

Meets ANSI utility standards.

Specifications	
Housing:	UV stabilized high-impact polypropylene.
Sensor:	1/2" cadmium sulfide light sensitive element.
Turn-on:	1 to 3 foot-candles.
Turn-on/ Turn-off Ratio:	1:3.
Switch Type:	Single-pole, single-throw. Contact position at night normally closed.
Time Delay:	Minimum 15 seconds.
Temperature Range:	-40° to 170° F.
Power Consumption:	1.1 watts average at 120 VAC.
Rated Life:	5,000 operations minimum at rated load.
Surge Protection:	MOV (Metal Oxide Varistor). 320 joule rating. Add suffix "MOV"
Dimensions:	3.07" diameter, 2.15" high.

Standard Series with Surface Passivated Cell

Model	Voltage	Rating
P2275	120	1800 VA
P68275	208-277	1800 VA
P7275	480	1800 VA
LM347	347	1800 VA
LM600	600	1800 VA



Electronic Utility-Grade Series State-of-the-Art Electronic Design

1 to 1.5 on/off ratio for maximum energy savings.

Meets or exceeds Ansi C136:10 & UL773

Specifications	
Housing:	UV stabilized high-impact polypropylene.
Sensor:	Sealed Silicon Sensor
Turn-on:	1.5 foot-candles on.
Turn-on/ Turn-off Ratio:	1:3
Switch Type:	Single-pole, single-throw. Contact position at night normally closed.
Time Delay:	3-5 seconds
Temperature Range:	-40° to 170° F.
Power Consumption:	Less than 1 watt per day.
Rated Life:	5,000 operations minimum at rated load.
Surge Protection:	320 Joule MOV (Metal Oxide Varistor).
Base:	125°C High Temp.

Model	Voltage	Rating
EC120-AP-TD	120 V	1800 VA
EC240-AP-TD	240 V	1800 VA
ECDV-AP-TD	105-285 V	1800 VA dual voltage

Housings are color-coded per ansi spec

120 V = Grey

208-277 V = Maroon

105-285 V = Blue

Photo-Timer = Green (ESC-124DS)