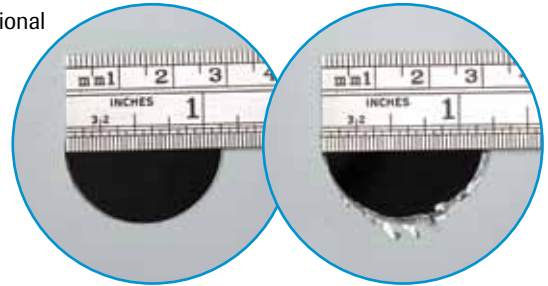




## Carbide Tipped Hole Cutters

TKO™ Hole Cutters offer the most efficient and clean cutter replacement for traditional knockouts, by making smooth holes in a fraction of the time at a fraction of the cost. Specifically designed to cut sheet metal, TKO cutters will even cut stainless steel with fine grained, carbide tips. The innovative design includes the exclusive SmoothStart™ replaceable pilot drill, which guides the cutter to the surface, avoiding cutter damage and providing smoother holes. An integral overdrill flange prevents cutter penetration beyond the sheet metal. When it comes to quality, performance and durability, IDEAL is the professional's choice for carbide tipped hole cutters.



IDEAL TKO™

Competitor

*IDEAL provides smoother, more precise holes than competitors' (holes cut with 1-1/8 in. cutters)*

HOLE CUTTERS

Hole Size	Conduit & Pipe Size	Cat. No.
3/4 in. (19mm)	—	<b>36-300</b>
7/8 in. (22mm)	1/2 in. (22mm) - push button	<b>36-301</b>
1 in. (25mm)	—	<b>36-302</b>
1-1/8 in. (29mm)	3/4 in. (19mm)	<b>36-303</b>
1-1/4 in. (32mm)	—	<b>36-304</b>
1-3/8 in. (35 mm)	1 (25mm)	<b>36-305</b>
1-7/32 in. (30mm)	1-7/32 in. (30mm) - push button	<b>36-313</b>
1-7/16 in. (37mm)	—	<b>36-306</b>
1-1/2 in. (38mm)	—	<b>36-307</b>
1-3/4 in. (44mm)	1-1/4 (32mm)	<b>36-308</b>
2 in. (51mm)	1-1/2 (38mm)	<b>36-309</b>
2-1/2 in. (64mm)	—	<b>36-310</b>
2-7/8 in. (73mm)	2-1/2 (64mm)	<b>36-315</b>
3-1/2 (89mm)	3 (76mm)	<b>36-316</b>
4 in. (102mm)	3-1/2 (89mm)	<b>36-317</b>
4-1/2 in. (114mm)	4 (102mm)	<b>36-318</b>

### SmoothStart™ Replacement Pilot Drill

Exclusive! SmoothStart™ pilot guides cutter to surface providing smoother holes and avoiding cutter damage.



Description	Cat. No.
SmoothStart™ Replacement Pilot Drill 	<b>36-312</b>

### 4-Piece Kit

Includes the three most common sizes along with a spare SmoothStart™ pilot bit and a convenient carrying case



Description	Cat. No.
4-Piece Carbide Hole Cutter Kit — Includes SmoothStart™ Replacement Tip, 7/8 in. 1-1/8 in., 1-3/8 in.	<b>36-311</b>

### Master Electrician's Kit

Includes six common sizes along with a spare SmoothStart™ pilot bit and a convenient carrying case



Description	Cat. No.
Master Electrician's Kit — Includes two SmoothStart™ Replacement Tips, 7/8 in. 1-1/8 in., 1-3/8 in., 1-3/4 in., 2 in. and 2-1/2 in.	<b>36-314</b>



**Integrated overdrill flange prevents penetration beyond the sheet metal.**