



REGULATORY AGENCY APPROVALS



Manufactured to meet the requirements of ANSI/IEEE C57.13.
Classified by U.L. in accordance with IEC 44-1



FREQUENCY:

60 Hz.

**STANDARD
SECONDARY VOLTAGE:**

120 Volts

INSULATION LEVEL:

600 Volt, 10 kV BIL full wave.

ACCURACY CLASS:

± 1% at all burdens up to 5 VA at 1.0 and 0.95 P.F.

THERMAL RATING:

40 VA at 30°C. amb., 27 VA at 55°C. amb.

Terminals are No. 6-32 screws
with one lockwasher and one flatwasher.

Approximate weight 2.5 lbs.



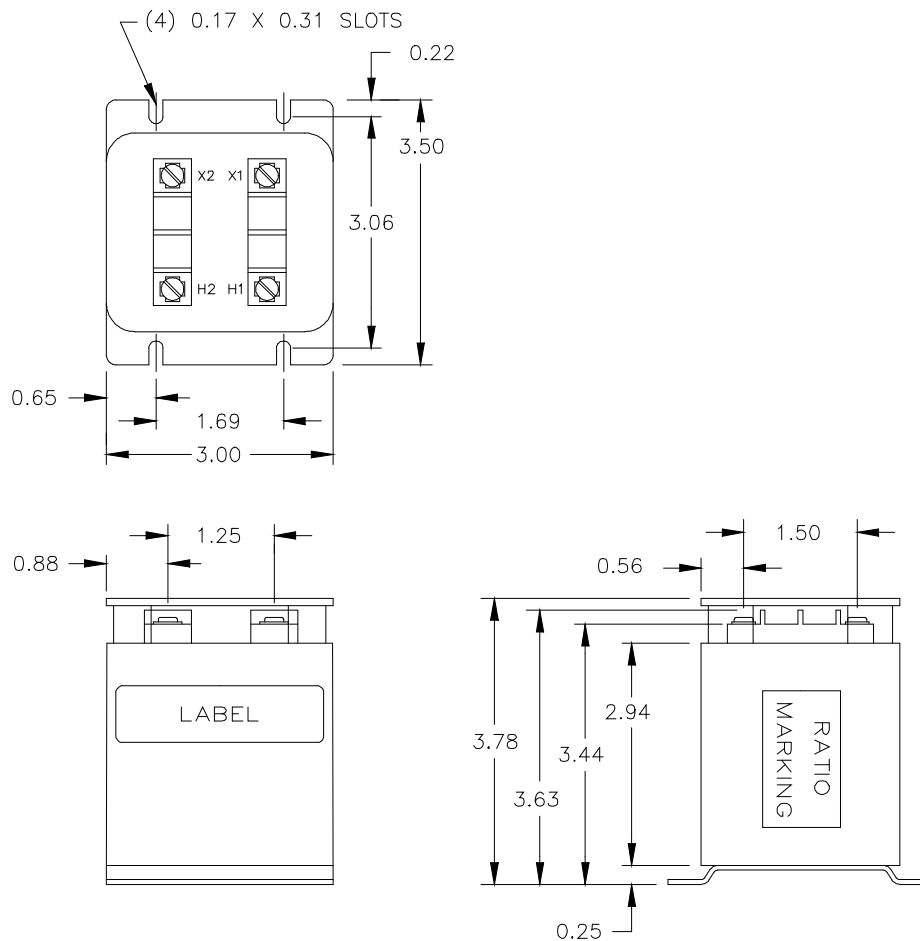
Clear Plastic Cover

CATALOG NUMBER	VOLTAGE RATIO	TURNS RATIO	REC. PRIMARY FUSE RATING
467-069	69.3:120	0.58:1	1.5
467-120	120:120	1:1	1.0
467-208	208:120	1.73:1	0.5
467-240	240:120	2:1	0.5
467-277	277:120	2.31:1	0.5
467-288	288:120	2.4:1	0.4
467-300	300:120	2.5:1	0.4
467-346	346:120	2.88:1	0.4
*467-480	*480:120	4:1	0.25
*467-600	*600:120	5:1	0.25

Model 467

Refer to Model 3VT472 for 3-Phase 4 Wire connected version

- The core and coil assembly is encased in a thermoplastic shell and filled with resin.
- These transformers are designed for operation line-to-line. They may also be operated line-to-ground or line-to-neutral at reduced voltage voltage, (58% of rated volts).
- It is desirable to use a 0.40 amp fuse in the secondary to protect the transformer.
- With two exceptions these transformer are ANSI C57.13 group 1. Those marked * are group 2.
- Models designed specifically for 50Hz operations are available with reduced performance consult factory details.
- Each transformer has a clear plastic cover.



USA, Canada, Asia, Latin America

Tel: +1-800-547-8629

Fax: +1-905-201-2455

e-mail: sales.multilin@ge.com

Europe, Middle East, Africa

Tel: +34-94-485-88-00

Fax: +34-94-485-88-45

e-mail: gmultilin.euro@ge.com

Please refer to our website www.GEMultilin.com for more detailed contact information

CS00A40621 Rev.1 12/09