

IEC Power Devices

IEC Contactor Coils

C-2000

AC Coils

For Use With	Coil Frequency	Product Number
CL00, CL01, CL02, CL25 contactors	AC	LB1A*
CL04, CL45 contactors	AC	LB3A*
CL06, CL07, CL08, CL09, CL10 contactors	AC	LB4A*

AC Voltage Selection

Note: Frequency/voltage combinations shaded in gray are available by special order only.

*AC Voltage		*AC Voltage		*AC Voltage	
60 Hz	Designation Letter	50 Hz	Designation Letter	50/60 Hz	Designation Letter
24	C	24	D	24	1
48	F	32	E	42	2
110	H	42	F	110/115	3
120	J	48	G	120	4
208	L	110	J	220	5
220	M	127	K	230	6
277	N	220/230	N	240	7
240	S	240	R	440	8
380	T	380/400	U	—	—
440	V	415	W	—	—
480	U	440	X	—	—
600	Y	500	Y	—	—
—	—	660/690	Z	—	—

DC Coils

For Use With	Coil Frequency	Product Number
CL00, CL01, CL02, CL25 contactors	DC	LB1D#
CL04, CL45 contactors	DC	LB3D#

DC Voltage Selection

#DC Voltage	Designation Letter
24	D
36	E
42	F
48	G
60	H
72	I
110	J
120/125	K
220	N
250	T

To complete coil product number, replace the *, or # with the appropriate “Designation Letter/Digit” (from **AC Voltage Selection** and **DC Voltage Selection** tables above) corresponding to the voltage and frequency of the control circuit.

AC/DC Coils

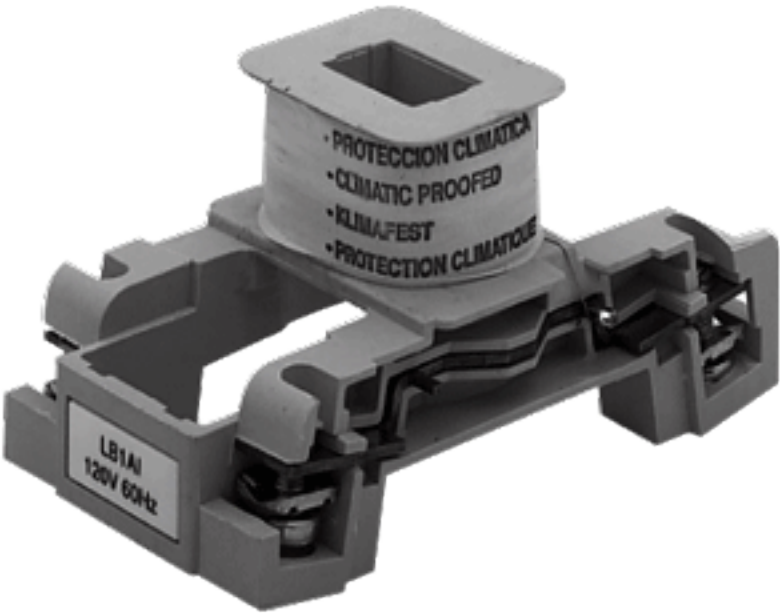
For Use With	Coil Frequency	Item	Product Number
CL06, CL07, CL08, CL09, CL10 contactors	AC/DC		LB4E†
Electronic Coil & Module Combination			
3-pole CK75C, CK08C contactors	AC/DC	Coils for use w/ electronic module	KB4E†
3-pole CK75C, CK08C contactors	AC/DC	Electronic module	KM4E†
3-pole CK08B, CK09B, CK95B contactors	AC/DC	Coils for use w/ electronic module	KB5E†
3-pole CK08B, CK09B, CK95B contactors	AC/DC	Electronic module	KM5E†
4-pole CK08B, CK09B, CK95B contactors	AC/DC	Coils for use w/ electronic module	KB6E†
3- and 4-pole CK10B, CK11B and CK12B contactors			
4-pole CK08B, CK09B, CK95B contactors	AC/DC	Electronic module	KM6E†
3- and 4-pole CK10B, CK11B and CK12B contactors			
3- and 4-pole CK10C, CK11C contactors	AC/DC	Coils for use w/ electronic module	KB7E†
3- and 4-pole CK10C, CK11C contactors	AC/DC	Electronic module	KM7E†

AC/DC Voltage Selection

Note: When assembling a coil for use with an electronic module, the voltage on both the coil and electronic module must be the same.

†Voltage	Designation Letter
24-48	D
42-48	F
110-127	J
220-250	N
380-415	U
440-500	Y

To complete product numbers, replace the † with the appropriate Designation Letter from **AC/DC Voltage Selection** table above. Order one coil and one electronic module to function together.



Coil

