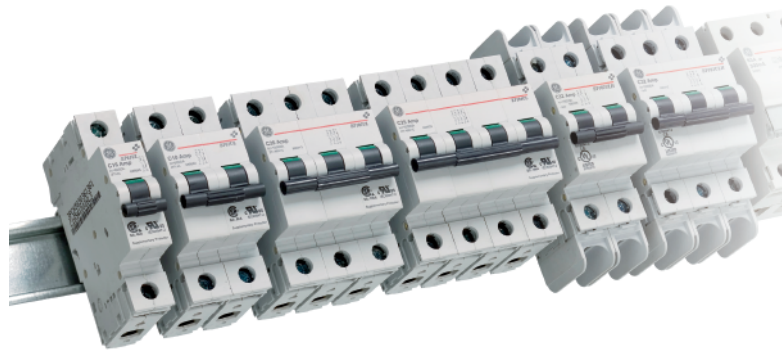


# E2000 Miniature Circuit Breakers

## Application Flexibility

- Dual AC & DC Ratings
- 6 kAIC & 10 kAIC Interruption Ratings @ 480Y/277 Vac
- C & D Trip Characteristics from 0.5 to 63 A
- B Trip Characteristics from 5 to 63 A
- Standard North American 5, 15, 30 & 60 A Ratings
- Left & Right Side Accessory Mounting – Up to 4 per Side
- 35mm DIN-rail Mounting
- UL Recognized & CSA Approved



imagination at work

## E2000 Miniature Circuit Breakers

### Short Circuit Capacity

Per UL 1077 (File E151139) & CSA 22.2 (No. 235-1989)

#### EP60

Poles	Max. Voltage Rating		Short Circuit Rating kAIC RMS Symmetrical				kAIC DC	
	AC	DC	120	120/ 240	277	480Y/ 277	50	110
1	277	50	10	-	6	-	10	-
2	480Y/277	110	10	10	6	-	-	10
3, 4	480Y/277	110	10	10	6	10	-	-

#### EP100

Poles	Max. Voltage Rating		Short Circuit Rating kAIC RMS Symmetrical				kAIC DC	
	AC	DC	120	120/ 240	277	480Y/ 277	50	110
1	277	50	10	-	10	-	10	-
2	480Y/277	110	10	10	10	-	-	10
3, 4	480Y/277	110	10	10	10	10	-	-

#### EP100UC (not UL or CSA approved)

AC acc. to IEC 60898-2

Poles	V	Icn/Ics (kA)
1	125 DC	10
	220 DC	6
	230/400 AC	6
2	250 DC	10
	440 DC	6
	400 AC	6

AC acc. to IEC 60947-2

Poles	V	Icn/Ics (kA)
1, 2	240 AC	10

#### EP100ULH

AC acc. to UL 489

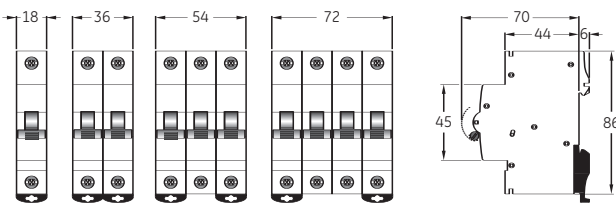
Poles	V	Icc (kA)
1	120	10
2	240	10

AC acc. to IEC 60947-2

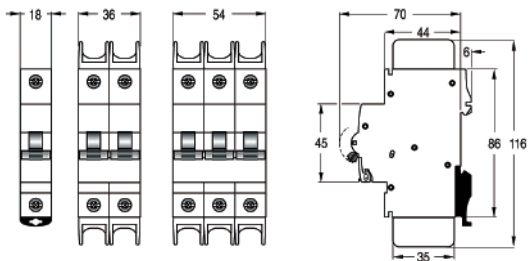
Poles	V	Icu (kA)*
1	127	30
	240	15
	415	4
2	127	40
2, 3	240	30

### Dimensions

#### EP60, EP100, EP100UC

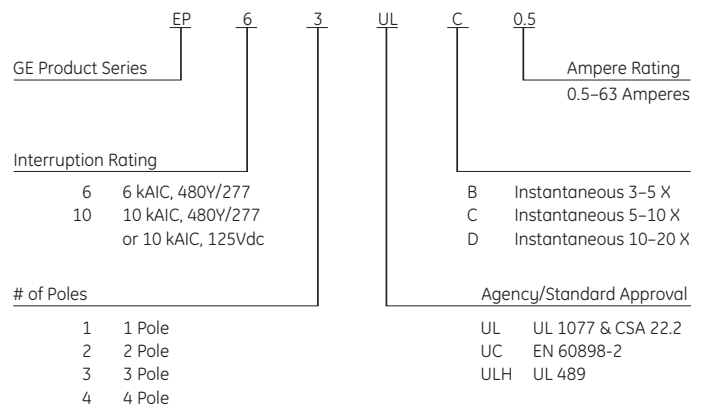


#### EP100ULH



### Catalog Number Structure

For use in interpreting catalog numbers only.  
Do not use to construct catalog numbers.



#### GE Consumer & Industrial

41 Woodford Avenue, Plainville, CT 06062

www.geelectrical.com

© 2007 General Electric Company

