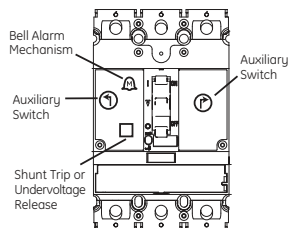


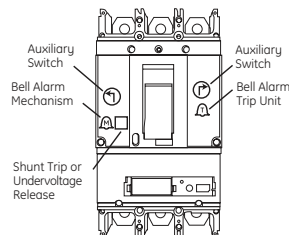
FE 250

Accessory	Mounting Pocket Location	Maximum Quantity
Shunt Trip or Undervoltage Release	□	1
Aux. Switch - Left Mount	⌚	2
Aux. Switch - Right Mount	⌚	2
Bell Alarm Mechanism	🔔	1



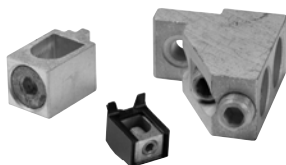
FG 600

Accessory	Mounting Pocket Location	Maximum Quantity
Shunt Trip or Undervoltage Release	□	1
Aux. Switch - Left Mount	⌚	3
Aux. Switch - Right Mount	⌚	2
Bell Alarm Mechanism	🔔	1
Bell Alarm Trip Unit	🔔	1



External Accessories

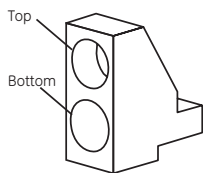
Termination Lugs



Termination lugs are available with / for Record Plus breakers that permit easy front connection of copper or aluminum insulated conductors to the breaker terminals. Lugs for FB, FC and FE frames are snap-in lugs that are held captive without hardware for ease of installation. FG lugs are mechanically attached to the circuit breaker terminals to provide sturdy connection of larger conductors.

Frame	Amp Range	Wire Range	Lug Part Number	Lug Kit (Set of 3) Part Number	Torque Specification	Lug Kit (Set of 3) w/ Control Wire Terminal
FB 100 / FC 100	15-20 A	14-10 Cu / Al	FCAL12	FCALK12	25 - 32 in*lb	
	25 - 60 A	10-4 Cu / Al	FCAL13	FCALK13	25 - 32 in*lb	
	70 - 100 A	4 - 1/0 Cu / Al	FCAL14	FCALK14	25 - 32 in*lb	
FE 250	20 - 150 A	14 - 3/0 Cu / Al	FCAL15	FCALK15	150 in*lb	FCALK15LV
	175 - 250A	#8 - 250 Cu / #8 - 350 Al	FCAL16	FCALK16	275 in*lb	FCALK16LV
FG 600	100- 600	#8 - 400 Cu / #6 - 500Al (Top*)	(Set of 3) FCALK318H		#8 - #4 275 in*lb	
		2/0 - 600 Cu / Al (Bottom*)	(Set of 2) FCALK218H		#3 - 600 375 in*lb	

*Top/Bottom holes in lug as shown



FCALK218H/FCALK318H