



GE Push Buttons

C-2000™ Push Buttons

600 Volts Max. AC/300 Volts Max. DC
10 Amps. Continuous AC/2.5 Amps. Continuous DC

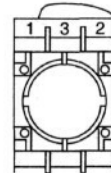
Special Operators (continued) Toggle Switches

Style	2 Positions Maintained	3 Positions Maintained	List Price, GO-10GC	3 Positions, Spring Return From Top	List Price, GO-10GC
<input checked="" type="radio"/> Polished Chrome	P9CCD	P9CCB	\$15.50	P9CCC	\$18.50
<input type="radio"/> Satin Chrome	P9MCD	P9MCB	15.50	P9MCC	18.50
<input checked="" type="radio"/> Round Engineered Plastic	P9XCD	P9XCB	15.50	P9XCC	18.50
<input type="checkbox"/> Square Engineered Plastic	P9SCD	P9SCB	15.50	P9SCC	18.50

Cams

Note selection and position of contact block(s) for cam.

Positions	Up	Center	Down	Contact Block Mounting Position			
				Screw Terminal Catalog No.		Quick-Connect Terminal Catalog No.	
				1	2	1	2
2	X	—	O	—	P9B10VN	—	P9B10FN
	O	—	X	P9B01VN	—	P9B01FN	—
	X	—	O	P9B11VN	—	—	—
	O	—	X				
3	X	O	O	—	P9B10VN	—	P9B10FN
	O	O	X	P9B01VN	—	P9B01FN	—
	X	O	O	P9B11VN	—	—	—
	O	O	X				



Wobble Sticks

Style	Catalog No.	List Price, GO-10GC
<input checked="" type="radio"/> Polished Chrome	P9CWR	\$31.00
<input type="radio"/> Satin Chrome	P9MWR	31.00
<input checked="" type="radio"/> Round Engineered Plastic	P9XWR	31.00

Potentiometer Operators

Style	Catalog No.	List Price, GO-10GC
<input checked="" type="radio"/> Polished Chrome	P9CX	\$65.00
<input type="radio"/> Satin Chrome	P9MZ	65.00
<input checked="" type="radio"/> Round Engineered Plastic	P9XZ	65.00
<input type="checkbox"/> Square Engineered Plastic	P9SZ	65.00

Reset Push Buttons

(Flush blue push buttons with white "R" provided with screw adjustable from 60mm to 80mm depth)

Style	Catalog No.	List Price, GO-10GC
<input checked="" type="radio"/> Polished Chrome	P9CRG	\$12.50
<input type="radio"/> Satin Chrome	P9MRG	12.50
<input checked="" type="radio"/> Round Engineered Plastic	P9XRG	12.50
<input type="checkbox"/> Square Engineered Plastic	P9SRG	12.50

Extended Screw For All Reset Push Buttons

(Adjustable from 80mm to 170mm depth)

Style	Catalog No.	List Price, GO-10GC
<input checked="" type="radio"/> <input type="radio"/> <input checked="" type="radio"/> <input type="checkbox"/>	P9ACVLR	\$4.50

Buzzer (Piezoelectric Transducer)

(85 dB at 1 meter output)

Style	Voltage	Catalog No.	List Price, GO-10GC
<input checked="" type="radio"/> Round Engineered Plastic	24 Vac/dc	P9XBD	\$65.00
	110-240 Vac/dc	P9XBM	65.00
<input type="checkbox"/> Square Engineered Plastic	24 Vac/dc	P9SBD	65.00
	110-240 Vac/dc	P9SBM	65.00

Selection and Drawing

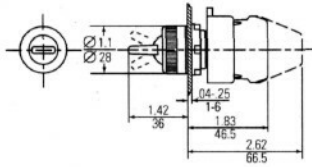
Data pages 9-50, 9-51
Accessories pages 9-87 to 9-95
Technical Data pages 9-52 to 9-56

C-2000™ Push Buttons

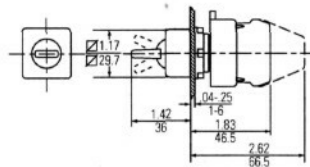
600 Volts Max. AC/300 Volts Max. DC
10 Amps. Continuous AC/2.5 Amps. Continuous DC

Special Operators

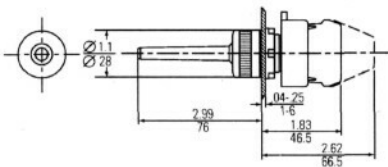
Dimensions shown in $\frac{\text{Inches}}{\text{Millimeters}}$



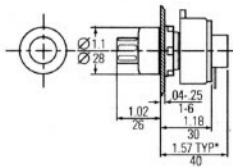
Round Toggle Switch



Square Toggle Switch

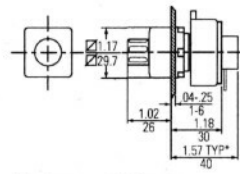


Round Wobble Stick



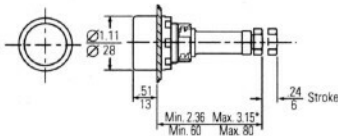
*Potentiometer supplied by customer

Round Potentiometer Operator



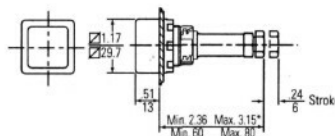
*Potentiometer supplied by customer

Square Potentiometer Operator



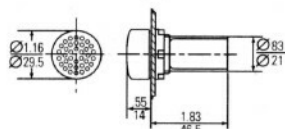
* Min. 3.15 Max. 6.69
Min. 80 Max. 170 With Accessory P9ACVLR

Round Reset Push Button

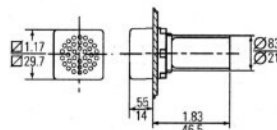


* Min. 3.15 Max. 6.69
Min. 80 Max. 170 With Accessory P9ACVLR

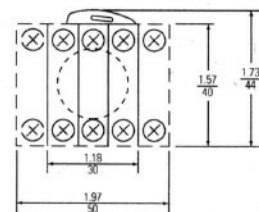
Square Reset Push Button



Round Buzzer



Square Buzzer



Typical Back Side View

Selection and Drawing

Data pages 9-50, 9-51
Accessories..... pages 9-87 to 9-95
Technical Data pages 9-52 to 9-56