



M12™ HEATED JACKET

Red Jacket Only-

- 2330S** M12 Heated Jacket - Small
- 2330M** M12 Heated Jacket - Medium
- 2330L** M12 Heated Jacket - Large
- 2330XL** M12 Heated Jacket - Extra Large
- 23302X** M12 Heated Jacket - Extra Large (2X)
- 23303X** M12 Heated Jacket - Extra Large (3X)

Camouflage Jacket Only-

- 2332S** M12 Heated Jacket - Small
- 2332M** M12 Heated Jacket - Medium
- 2332L** M12 Heated Jacket - Large
- 2332XL** M12 Heated Jacket - Extra Large
- 23322X** M12 Heated Jacket - Extra Large (2X)
- 23323X** M12 Heated Jacket - Extra Large (3X)

Black Jacket Kit-

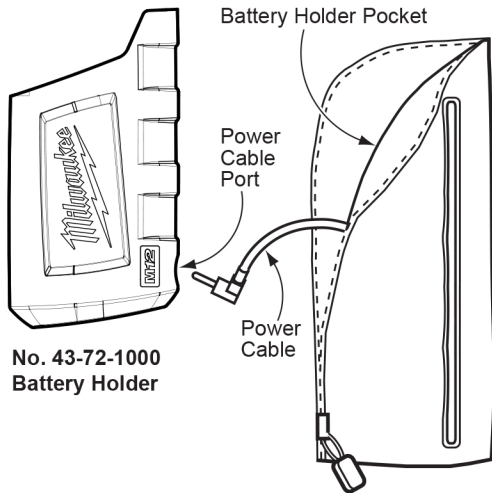
- 2336S** M12 Heated Jacket - Small
- 2336M** M12 Heated Jacket - Medium
- 2336L** M12 Heated Jacket - Large
- 2336XL** M12 Heated Jacket - Extra Large
- 23362X** M12 Heated Jacket - Extra Large (2X)
- 23363X** M12 Heated Jacket - Extra Large (3X)



M12™ HEATED JACKET BATTERY HOLDER

CATALOG NO. **43-72-1000**

SERIAL NUMBER **C75A**



**No. 43-72-1000
Battery Holder**

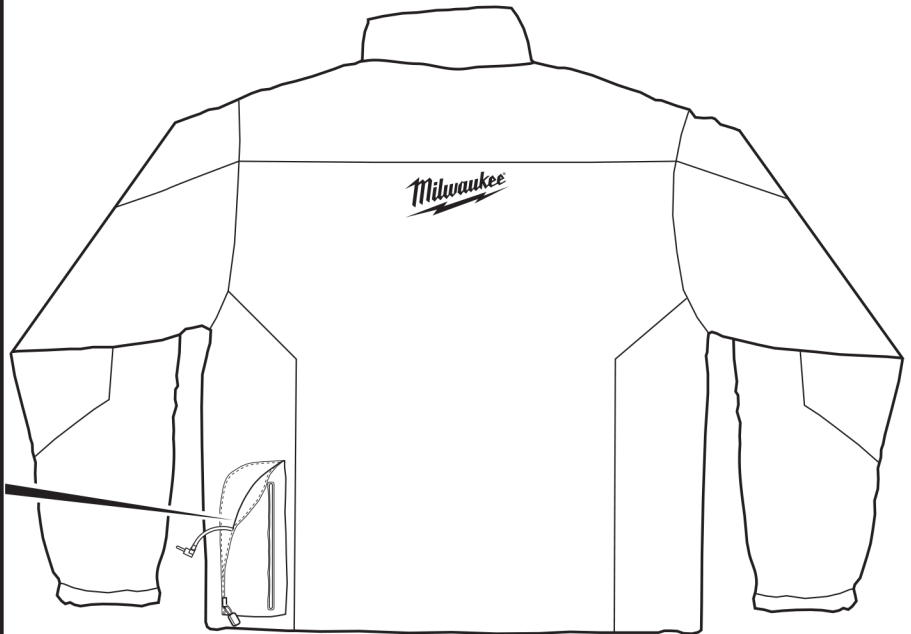


FIG.	PART NO.	DESCRIPTION OF PART	NO. REQ.
1	43-72-1000	Battery Holder	(1)
2	12-20-2330	Service Nameplate - Battery Holder	(1)
3	10-20-2318	Warning Label - Battery Holder	(1)

FIG. 2, 3

NOTES
A clean, dry surface is essential for proper performance for any adhesive system. The area intended for application of any adhesive label or nameplate must be prepared by cleaning with isopropyl alcohol. The solvent is to be applied with a clean, lint free applicator and the surface allowed to dry before applying the label or nameplate.