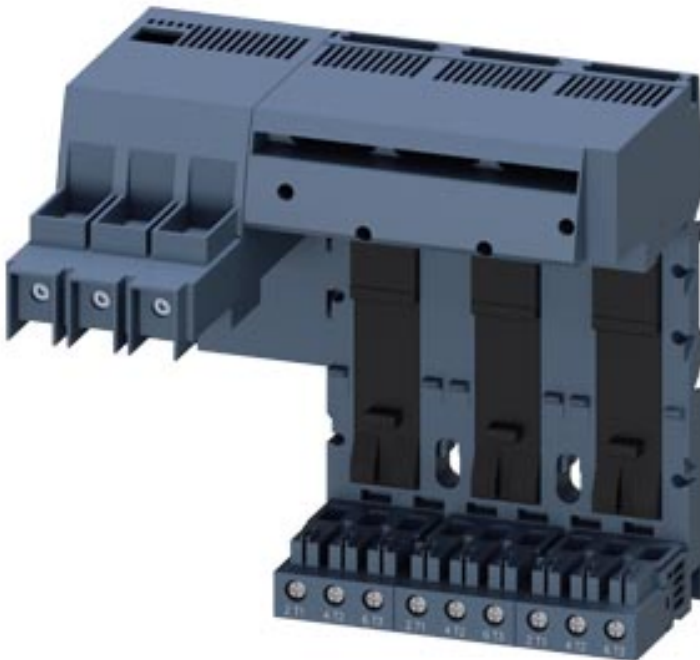


INFEED ON THE LEFT CONNECTION MAIN CIRCUIT:  
SCREW TERMINAL, 3 SLOTS FOR COMPACT LOAD  
FEEDERS TERMINAL MAX. 50 MM<sup>2</sup> / 70 MM<sup>2</sup>



General technical data:

<b>product brandname</b>		SIRIUS
<b>Product designation</b>		infeed left
<b>Protection class IP</b>		IP20
<b>Degree of pollution</b>		3
<b>Number of slots for compact feeder</b>		3
<b>Installation altitude at height above sea level maximum</b>	m	2 000
<b>Ambient temperature</b>		
• during transport	°C	-55 ... +80
• during storage	°C	-55 ... +80
• during operation	°C	-20 ... +60
<b>Vibration resistance</b>		f = 4 to 5.8 Hz; d = 15 mm; f = 5.8 to 500 Hz; a = 2 m / s <sup>2</sup> 10 cycles
<b>Shock resistance</b>		Semi-sinusoidal a = 6 m/s <sup>2</sup> at 10 ms; 3 pos. and 3 neg. Shock in all axes
<b>Equipment marking acc. to DIN EN 61346-2</b>		W
<b>Equipment marking acc. to DIN 40719 extended according to IEC 204-2 acc. to IEC 750</b>		W







Main circuit:		
Operating current at AC at 400 V rated value	A	100
Operating voltage at AC-3 rated value maximum	V	690

Installation/ mounting/ dimensions:		
<b>Mounting type</b>		screw and snap-on mounting
<b>Width</b>	mm	205
<b>Height</b>	mm	197
<b>Depth</b>	mm	155

Connections/ Terminals:		
Type of electrical connection for main current circuit		screw-type terminals
Design of screw-type connection for main contacts		M3
<b>Wire stripping length for main contacts</b>	mm	17
Tightening torque for main contacts with screw-type terminals	N·m	6 ... 8
Connectable conductor cross-section for supply for main contacts using the upper clamping point		
• solid	mm <sup>2</sup>	2.5 ... 70
• stranded	mm <sup>2</sup>	2.5 ... 70
• finely stranded with core end processing	mm <sup>2</sup>	2.5 ... 35
• finely stranded without core end processing	mm <sup>2</sup>	4 ... 50
Connectable conductor cross-section for supply for main contacts using the lower clamping point		
• solid	mm <sup>2</sup>	2.5 ... 70
• stranded	mm <sup>2</sup>	2.5 ... 70
• finely stranded with core end processing	mm <sup>2</sup>	2.5 ... 50
• finely stranded without core end processing	mm <sup>2</sup>	10 ... 50
Connectable conductor cross-section for supply for main contacts using both clamping points		
• solid	mm <sup>2</sup>	2 ... 50
• stranded	mm <sup>2</sup>	2 ... 50
• finely stranded with core end processing	mm <sup>2</sup>	2 ... 35
• finely stranded without core end processing	mm <sup>2</sup>	2 ... 35
AWG number as coded connectable conductor cross section for supply for main contacts		
• using the upper clamping point		10 ... 0
• using the lower clamping point		10 ... 0
• using both clamping points		10 ... 0
Type of connectable conductor cross-sections for supply for main contacts using the upper clamping point		
• solid		2.5 ... 70 mm <sup>2</sup>
• stranded		2.5 ... 70 mm <sup>2</sup>

<ul style="list-style-type: none"> <li>• finely stranded with core end processing</li> <li>• finely stranded without core end processing</li> </ul>		<p>2.5 ... 35 mm<sup>2</sup></p> <p>4 ... 50 mm<sup>2</sup></p>
<p>Type of connectable conductor cross-sections for supply for main contacts using the lower clamping point</p> <ul style="list-style-type: none"> <li>• solid</li> <li>• stranded</li> <li>• finely stranded with core end processing</li> <li>• finely stranded without core end processing</li> </ul>		<p>2.5 ... 70 mm<sup>2</sup></p> <p>2.5 ... 70 mm<sup>2</sup></p> <p>2.5 ... 50 mm<sup>2</sup></p> <p>10 ... 50 mm<sup>2</sup></p>
<p>Type of connectable conductor cross-sections for supply for main contacts using both clamping points</p> <ul style="list-style-type: none"> <li>• solid</li> <li>• stranded</li> <li>• finely stranded with core end processing</li> <li>• finely stranded without core end processing</li> </ul>		<p>2 x (2.5 ... 50 mm<sup>2</sup>)</p> <p>2 x (2.5 ... 50 mm<sup>2</sup>)</p> <p>2 x (2.5 ... 35 mm<sup>2</sup>)</p> <p>2 x (4 ... 35 mm<sup>2</sup>)</p>
<p>Type of connectable conductor cross-sections at AWG conductors for supply for main contacts</p> <ul style="list-style-type: none"> <li>• using the upper clamping point</li> <li>• using the lower clamping point</li> <li>• using both clamping points</li> </ul>		<p>10 ... 2/0</p> <p>10 ... 2/0</p> <p>2 x (10 ... 1/0)</p>
<p>Connectable conductor cross-section for main contacts for load-side outgoing feeder</p> <ul style="list-style-type: none"> <li>• solid</li> <li>• stranded</li> <li>• finely stranded with core end processing</li> </ul>	<p>mm<sup>2</sup></p> <p>mm<sup>2</sup></p> <p>mm<sup>2</sup></p>	<p>1.5 ... 10</p> <p>1.5 ... 10</p> <p>1.5 ... 6</p>
<p>AWG number as coded connectable conductor cross section for main contacts for load-side outgoing feeder</p>		<p>14 ... 8</p>
<p>Type of connectable conductor cross-sections for main contacts for load-side outgoing feeder</p> <ul style="list-style-type: none"> <li>• solid</li> <li>• stranded</li> <li>• finely stranded with core end processing</li> </ul>		<p>2x (1.5 ... 6 mm<sup>2</sup>), 1x (1.5 ... 10 mm<sup>2</sup>)</p> <p>2x (1.5 ... 6 mm<sup>2</sup>), 1x (1.5 ... 10 mm<sup>2</sup>)</p> <p>2 x (1.5 ... 6) mm<sup>2</sup></p>
<p>Type of connectable conductor cross-sections at AWG conductors for main contacts for load-side outgoing feeder</p>		<p>2 x (16 ... 10), 1 x (16 ... 8)</p>

Certificates/ approvals:

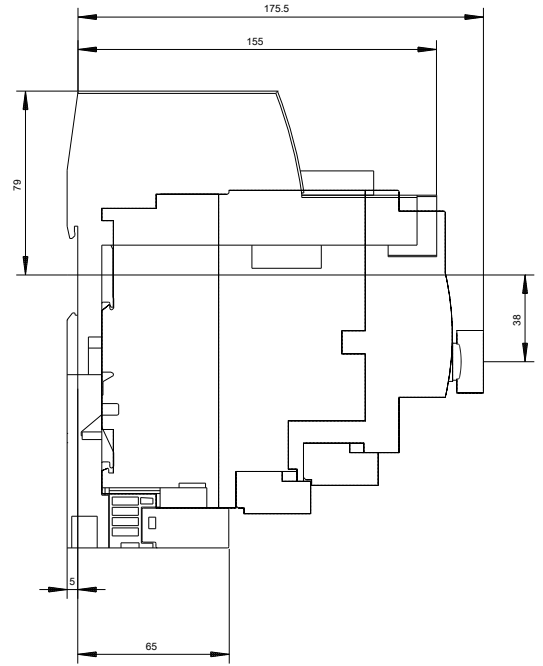
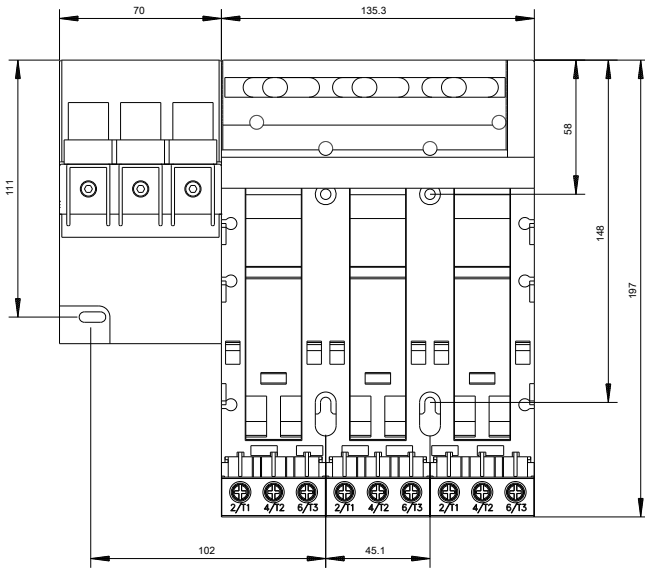
General Product Approval			EMC	Declaration of Conformity	Shipping Approval
 CSA	 UL		 C-Tick	 EG-Konf.	 BUREAU VERITAS

Shipping Approval					other
 DNV	 LRS	 PRS	 RINA	 RMRS	<a href="#">Environmental Confirmations</a>

other
<a href="#">Confirmation</a>

Safety related data:	
Protection against electrical shock	finger-safe

Further information
<b>Information- and Downloadcenter (Catalogs, Brochures,...)</b> <a href="http://www.siemens.com/industrial-controls/catalogs">http://www.siemens.com/industrial-controls/catalogs</a>
<b>Industry Mall (Online ordering system)</b> <a href="http://www.siemens.com/industrymall">http://www.siemens.com/industrymall</a>
<b>Cax online generator</b> <a href="http://support.automation.siemens.com/WW/CAXorder/default.aspx?lang=en&amp;mlfb=3RA6813-8AB">http://support.automation.siemens.com/WW/CAXorder/default.aspx?lang=en&amp;mlfb=3RA6813-8AB</a>
<b>Service&amp;Support (Manuals, Certificates, Characteristics, FAQs,...)</b> <a href="https://support.industry.siemens.com/cs/ww/en/ps/3RA6813-8AB">https://support.industry.siemens.com/cs/ww/en/ps/3RA6813-8AB</a>
<b>Image database (product images, 2D dimension drawings, 3D models, device circuit diagrams, EPLAN macros, ...)</b> <a href="http://www.automation.siemens.com/bilddb/cax_de.aspx?mlfb=3RA6813-8AB&amp;lang=en">http://www.automation.siemens.com/bilddb/cax_de.aspx?mlfb=3RA6813-8AB&amp;lang=en</a>



last modified:

07/01/2017