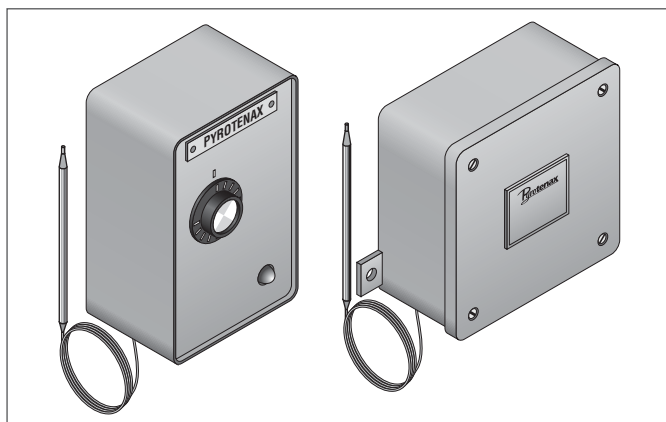




# Pyrotenax 4395W & 4688 Series Thermostats

## USER INSTRUCTIONS FOR BULB AND CAPILLARY THERMOSTATS



### DESCRIPTION

The Pyrotenax 4395W and 4688 series thermostats are used to control temperature for a wide variety of heating applications. These temperature controllers cycle the heat on and off within a specified temperature range.

### TOOLS AND ACCESSORIES REQUIRED

- Screwdriver
- Screws

### 4688P THERMOSTAT

<b>Type</b>	Remote bulb
<b>Capillary length</b>	10 ft (3 m) copper capillary with HDPE jacket
<b>Bulb</b>	3/8" dia x 5-3/4" L (9.5 mm dia x 14.6 cm L)
<b>Temperature range</b>	32°F to 120°F (0°C to 50°C)
<b>Maximum permissible temperature at bulb</b>	155°F (65°C)
<b>Rating</b>	30 A at 125 V or 250 V, SPST switch (opens on temperature rise), ambient compensated
<b>Enclosure</b>	Moisture and dust resistant with external temperature adjustment knob and red indicating lamp; two 1/2" knockouts; 6-9/16" L x 4" W x 2-5/8" D (16.7 cm L x 10.2 cm W x 6.7 cm D)

### 4688WP THERMOSTAT

<b>Type</b>	Remote bulb
<b>Capillary length</b>	10 ft (3 m) copper capillary with HDPE jacket
<b>Bulb</b>	3/8" dia x 5-3/4" L (9.5 mm dia x 14.6 cm L)
<b>Temperature range</b>	32°F to 120°F (0°C to 50°C)
<b>Maximum permissible temperature at bulb</b>	155°F (65°C)
<b>Rating</b>	30 A at 125 V or 250 V, SPST switch (opens on temperature rise), ambient compensated
<b>Enclosure</b>	Cast aluminum, weathertight and suitable for direct exposure to weather (Do not use for underground burial); internal adjustment knob; two 1/2" NPT entries; 6" L x 5-3/4" W x 3-1/2" D (15.2 cm L x 14.6 cm W x 8.9 cm D)

**Also available as**

**4688WP25 –**  
Similar to 4688WP, but with 25 ft (7.6 m) capillary

**4688WS –**  
Similar to 4688WP, but with 10 ft (3 m) stainless steel capillary

### 4395W THERMOSTAT

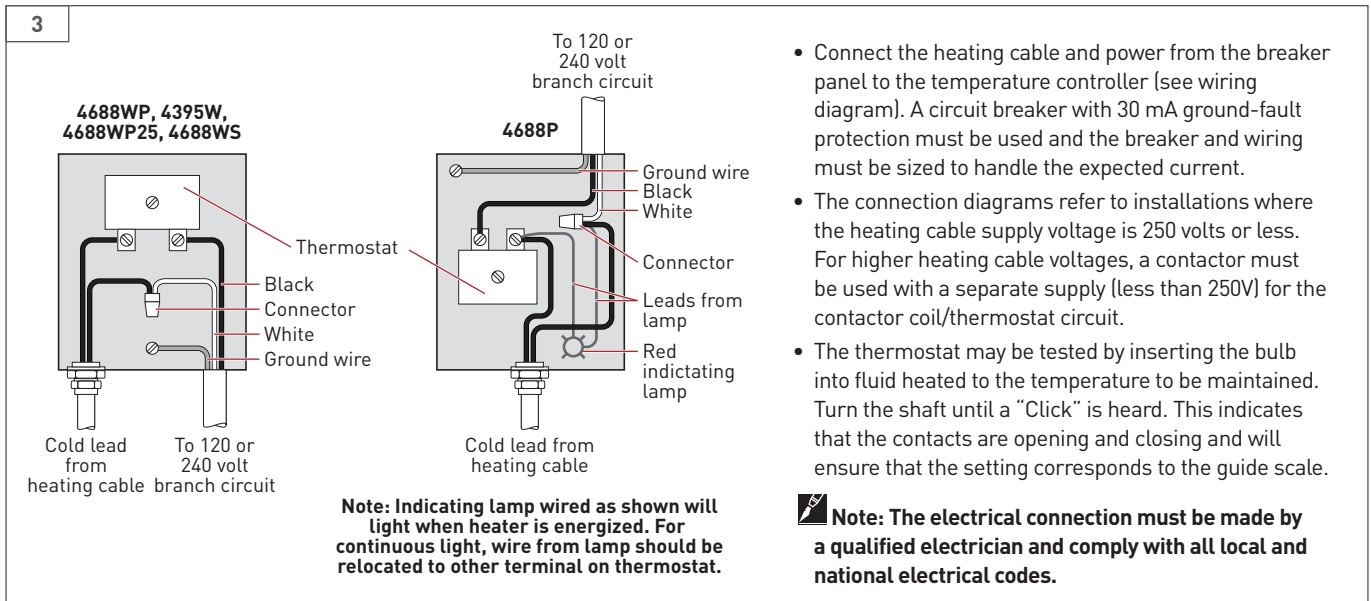
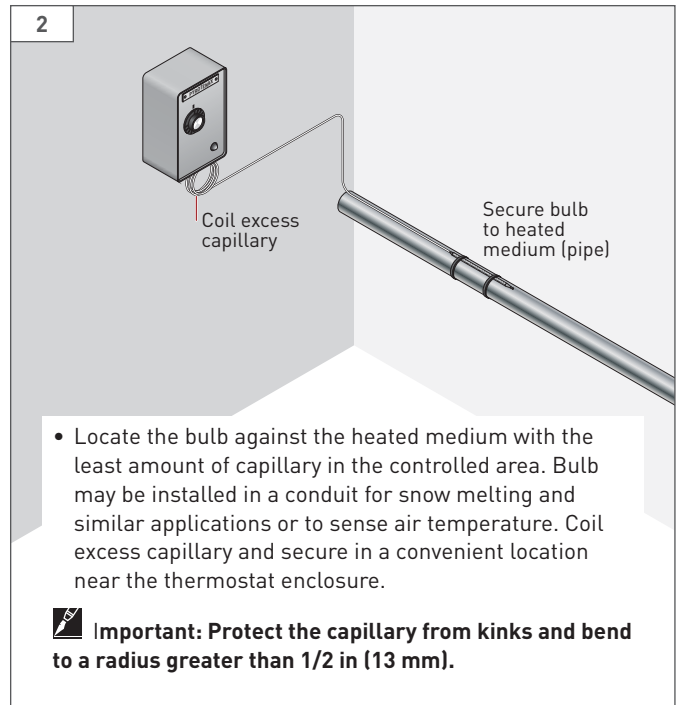
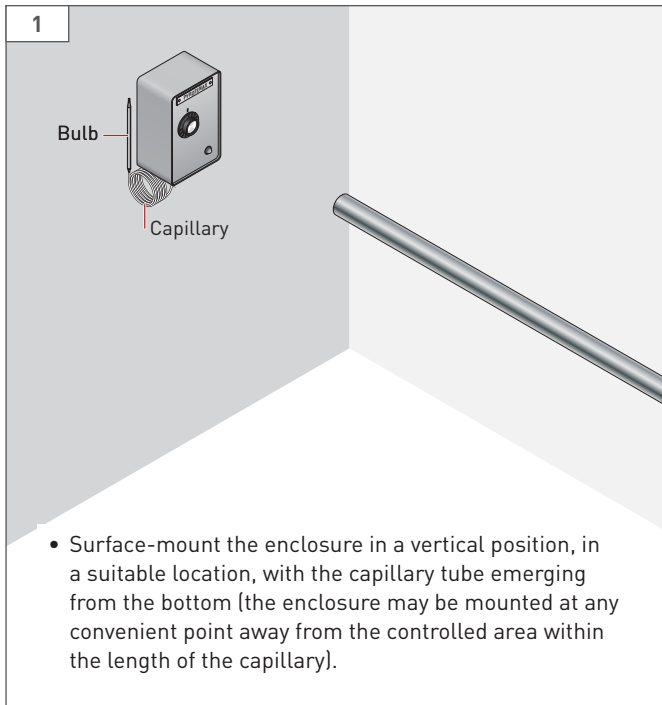
<b>Type</b>	Remote bulb
<b>Capillary length</b>	10 ft (3 m) copper capillary
<b>Bulb length</b>	1/4" dia x 5-1/2" L (6.4 mm dia x 14 cm L)
<b>Temperature range</b>	50°F to 250°F (10°C to 120°C)
<b>Maximum permissible temperature at bulb</b>	350°F (176°C)
<b>Rating</b>	30 A at 125 V or 250 V, SPST switch (opens on temperature rise), ambient compensated
<b>Enclosure</b>	Cast aluminum, weathertight and suitable for direct exposure to weather (Do not use for underground burial); internal adjustment knob; two 1/2" NPT entries; 6" L x 5-3/4" W x 3-1/2" D (15.2 cm L x 14.6 cm W x 8.9 cm D)

### ⚠ WARNING:

- All thermostats must be installed by a qualified electrician and in accordance with the requirements of the Canadian Electrical Code (CEC) or National Electrical Code (NEC) and applicable local codes.

### ⚠ IMPORTANT:

- DO NOT cut the capillary as this will render the thermostat inoperative.
- Protect the capillary from kinks, sharp bends (less than 1/2" (13 mm) in radius and unnecessary handling).



WWW.PENTAIRTHERMAL.COM

#### NORTH AMERICA

Tel: +1.800.545.6258  
Fax: +1.800.527.5703  
Tel: +1.650.216.1526  
Fax: +1.650.474.7711  
thermal.info@pentair.com

#### EUROPE, MIDDLE EAST, AFRICA

Tel: +32.16.213.511  
Fax: +32.16.213.603  
thermal.info@pentair.com

#### ASIA PACIFIC

Tel: +86.21.2412.1688  
Fax: +86.21.5426.2917  
cn.thermal.info@pentair.com

#### LATIN AMERICA

Tel: +1.713.868.4800  
Fax: +1.713.868.2333  
thermal.info@pentair.com

Pentair and Pyrotenax are owned by Pentair or its global affiliates. All other trademarks are the property of their respective owners. Pentair reserves the right to change specifications without prior notice.