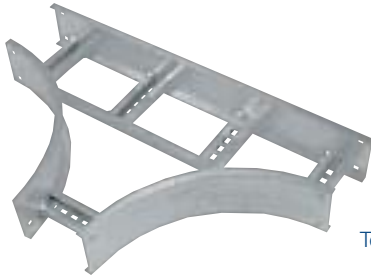
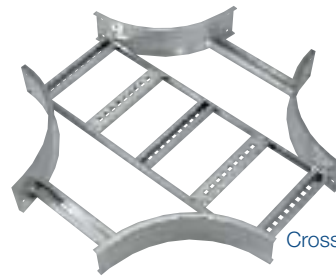
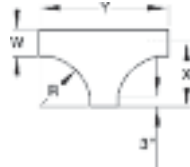


Fittings

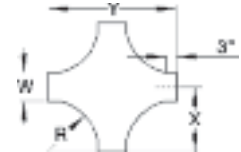
U-Style Fittings Horizontal Tee, Cross



Tee



Cross



Technical Specifications

Part Numbering System

AUF-5-06-L-HT-12

Fitting Material and Siderail: 5
 Width: 06
 Fitting Type: L
 Bottom Style: HT
 Nominal Radius: 12

Selection Guide

Inside Tray Widths: **6, 9, 12, 18, 24, 30, 36**

Nominal Radius: **12, 24, 36, 48**

Bottom Styles: **L**– Ladder, **V**– Ventilated, **S**– Solid

Siderail Depth: **4 in. – 7 in.**

| Horizontal TEE – U-Style | | | | |
|--------------------------|-------|--------------------|------------|-----|
| Nominal Radius R | Width | Cat. No. | Dimensions | |
| | | | X | Y |
| 12 | 6 | AUF(†)-06-(*)-HT12 | 15 | 30 |
| | 9 | AUF(†)-09-(*)-HT12 | 16-1/2 | 33 |
| | 12 | AUF(†)-12-(*)-HT12 | 18 | 36 |
| | 18 | AUF(†)-18-(*)-HT12 | 21 | 42 |
| | 24 | AUF(†)-24-(*)-HT12 | 24 | 48 |
| | 30 | AUF(†)-30-(*)-HT12 | 27 | 54 |
| 24 | 6 | AUF(†)-06-(*)-HT24 | 27 | 54 |
| | 9 | AUF(†)-09-(*)-HT24 | 28-1/2 | 57 |
| | 12 | AUF(†)-12-(*)-HT24 | 30 | 60 |
| | 18 | AUF(†)-18-(*)-HT24 | 33 | 66 |
| | 24 | AUF(†)-24-(*)-HT24 | 36 | 72 |
| | 30 | AUF(†)-30-(*)-HT24 | 39 | 78 |
| 36 | 6 | AUF(†)-06-(*)-HT36 | 39 | 78 |
| | 9 | AUF(†)-09-(*)-HT36 | 40-1/2 | 81 |
| | 12 | AUF(†)-12-(*)-HT36 | 42 | 84 |
| | 18 | AUF(†)-18-(*)-HT36 | 45 | 90 |
| | 24 | AUF(†)-24-(*)-HT36 | 48 | 96 |
| | 30 | AUF(†)-30-(*)-HT36 | 51 | 102 |
| 48 | 6 | AUF(†)-06-(*)-HT48 | 51 | 102 |
| | 9 | AUF(†)-09-(*)-HT48 | 52-1/2 | 105 |
| | 12 | AUF(†)-12-(*)-HT48 | 54 | 108 |
| | 18 | AUF(†)-18-(*)-HT48 | 57 | 114 |
| | 24 | AUF(†)-24-(*)-HT48 | 60 | 120 |
| | 30 | AUF(†)-30-(*)-HT48 | 63 | 126 |

| Horizontal CROSS – U-Style | | | | |
|----------------------------|-------|--------------------|------------|-----|
| Nominal Radius R | Width | Cat. No. | Dimensions | |
| | | | X | Y |
| 12 | 6 | AUF(†)-06-(*)-HX12 | 15 | 30 |
| | 9 | AUF(†)-09-(*)-HX12 | 16-1/2 | 33 |
| | 12 | AUF(†)-12-(*)-HX12 | 18 | 36 |
| | 18 | AUF(†)-18-(*)-HX12 | 21 | 42 |
| | 24 | AUF(†)-24-(*)-HX12 | 24 | 48 |
| | 30 | AUF(†)-30-(*)-HX12 | 27 | 54 |
| 24 | 6 | AUF(†)-06-(*)-HX24 | 27 | 54 |
| | 9 | AUF(†)-09-(*)-HX24 | 28-1/2 | 57 |
| | 12 | AUF(†)-12-(*)-HX24 | 30 | 60 |
| | 18 | AUF(†)-18-(*)-HX24 | 33 | 66 |
| | 24 | AUF(†)-24-(*)-HX24 | 36 | 72 |
| | 30 | AUF(†)-30-(*)-HX24 | 39 | 78 |
| 36 | 6 | AUF(†)-06-(*)-HX36 | 39 | 78 |
| | 9 | AUF(†)-09-(*)-HX36 | 40-1/2 | 81 |
| | 12 | AUF(†)-12-(*)-HX36 | 42 | 84 |
| | 18 | AUF(†)-18-(*)-HX36 | 45 | 90 |
| | 24 | AUF(†)-24-(*)-HX36 | 48 | 96 |
| | 30 | AUF(†)-30-(*)-HX36 | 51 | 102 |
| 48 | 6 | AUF(†)-06-(*)-HX48 | 51 | 102 |
| | 9 | AUF(†)-09-(*)-HX48 | 52-1/2 | 105 |
| | 12 | AUF(†)-12-(*)-HX48 | 54 | 108 |
| | 18 | AUF(†)-18-(*)-HX48 | 57 | 114 |
| | 24 | AUF(†)-24-(*)-HX48 | 60 | 120 |
| | 30 | AUF(†)-30-(*)-HX48 | 63 | 126 |

(†) Insert siderail depth. (*) Insert bottom style to complete Cat. No. Tees include 2 pairs / Crosses include 3 pairs of splice plates with hardware.

T&B aluminum cable tray is composed of two distinct systems H-Style and U-Style. These systems are interchangeable.