

Steel Cable Tray

Accessories and Covers

Tray Covers

- Tray covers are available for all classes of tray. They should be installed where falling objects may damage cables or where vertical tray run is accessible by pedestrian or vehicular traffic.

Outside cable tray runs should be covered with a Peaked Flanged cover to protect cable from the elements and excess build up of snow and ice.

Solid Covers

- These covers provide maximum mechanical protection for cables with limited heat build up. Solid covers are available with or without flange. Flanged covers have 1/2" flange.

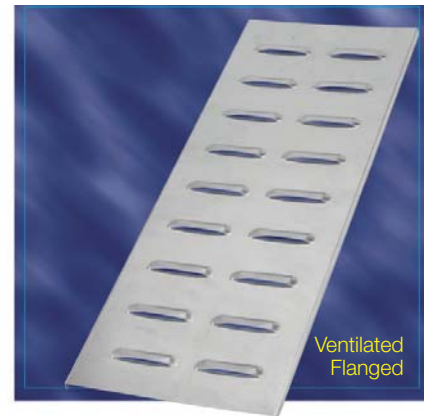
Cover mounting hardware must be ordered separately.



Ventilated Flanged Covers

- This design offers excellent mechanical protection while allowing heat produced by cables to dissipate.

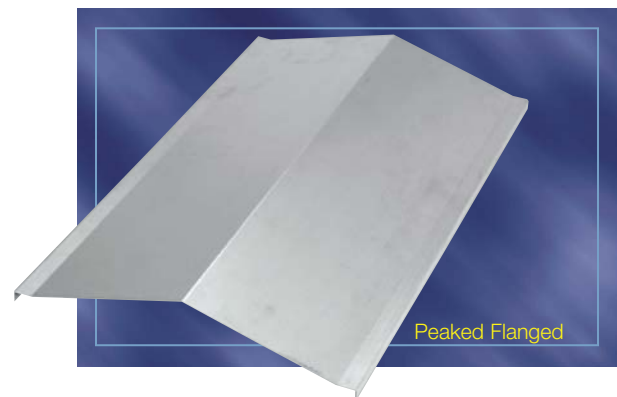
Cover mounting hardware must be ordered separately.



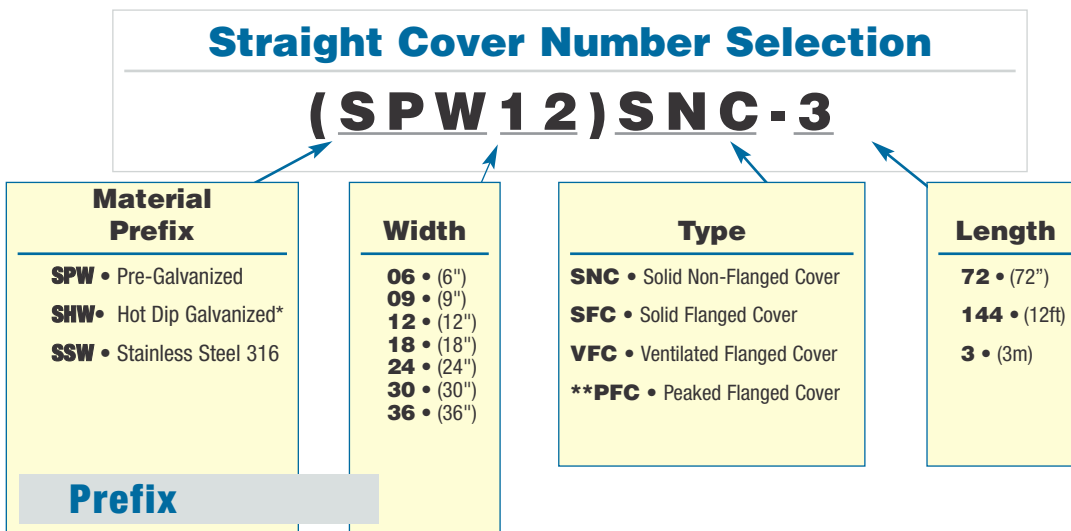
Peaked Flanged Covers

- Peaked covers offer mechanical protection plus prevents accumulation of liquid on the cover. Peaked covers have 15° rise at the peak. Covers greater than 12" wide *available in 72" and 3 m lengths.

Cover mounting hardware must be ordered separately.



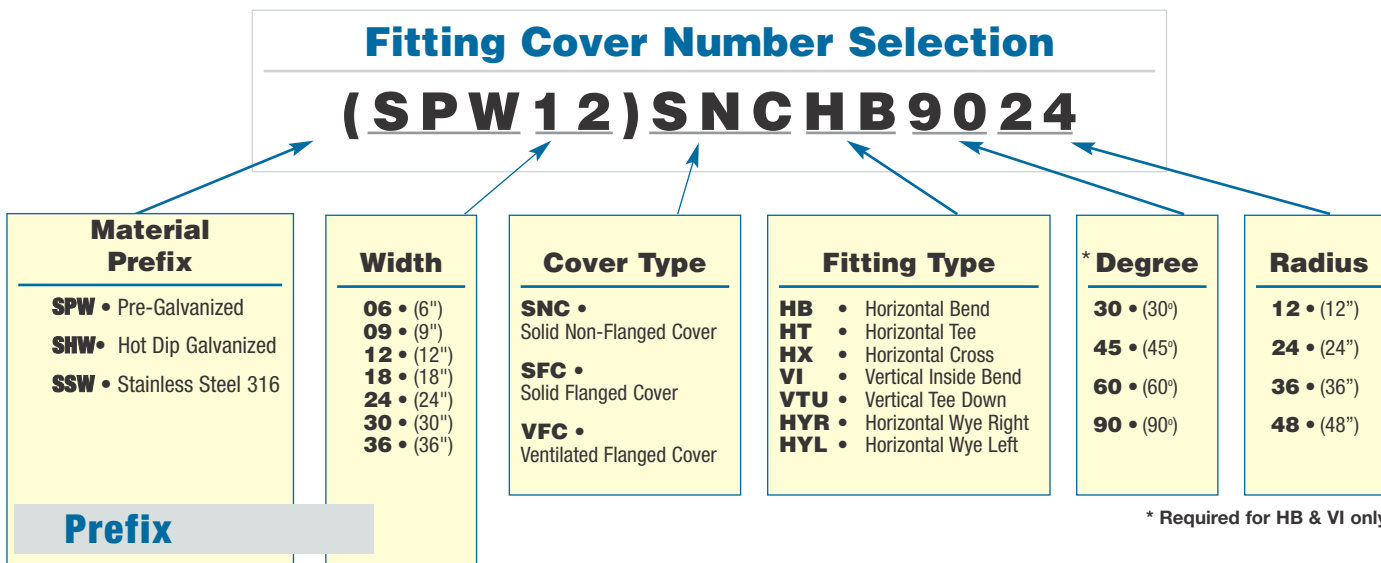
Straight Covers



* Hot Dipped Covers only available in 72" and 1500 mm lengths.
 ** Peaked covers greater than 12" wide available in 72" and 3m lengths only.

Steel Accessories

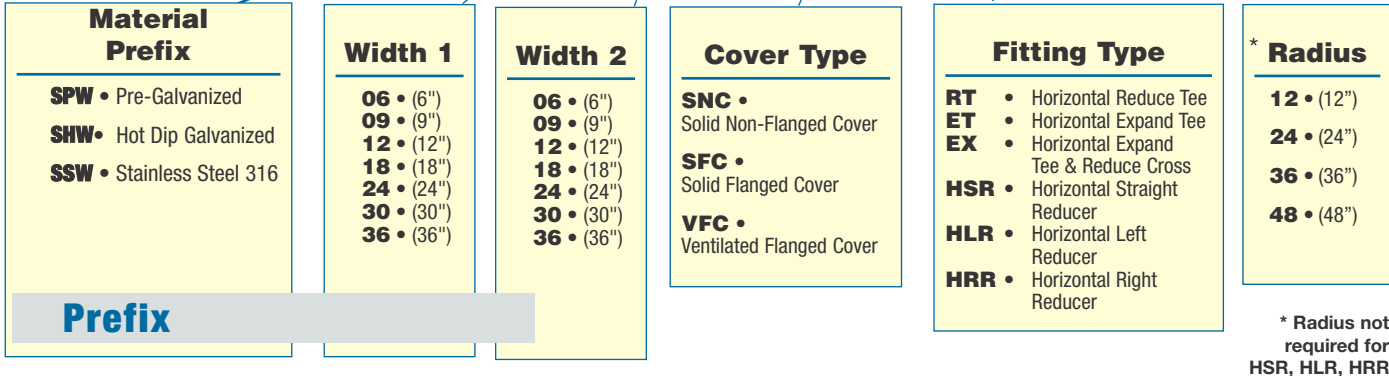
Fitting Covers



Fitting Covers (cont'd)

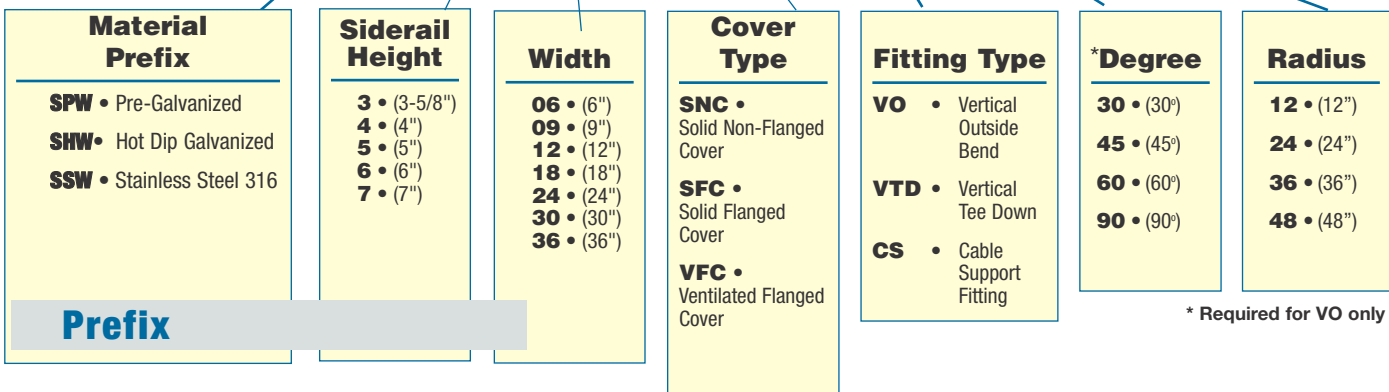
Fitting Cover Number Selection

(SPW 18 12) SNCRT 12



Fitting Cover Number Selection

(SPW 4 1 2) SNCV 090 24



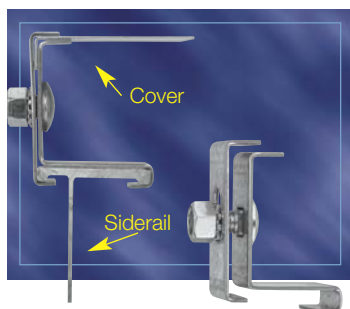
Accessories and Covers

Quantity of Standard Cover Clamps Required

| | |
|-------------------------------------|--------|
| Straight section (6 ft) | 4 pcs. |
| Straight section (12 ft) | 6 pcs. |
| Horizontal and Vertical Bends | 4 pcs. |
| Tees | 6 pcs. |
| Crosses | 8 pcs. |

Note: When using the Heavy Duty Cover Clamp, only half the quantity of pieces are required.

Raised Cover Clamp



Designed to raise cover above tray for added ventilation.

| Material Prefix | Cover Offset | Catalogue Number |
|-----------------|--------------|------------------|
| SPW | 1" | SPW(+RCC |
| SSW | 2" | |
| | 3" | |

(+) Insert Cover Offset

Peaked End Cap

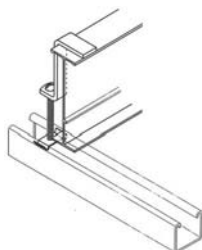


Used for transition between peaked covers to straight covers.

| Material Prefix | Width | Catalogue Number |
|-----------------|-------|------------------|
| SPW | 06" | SPW(*)PEC |
| SHW | 09" | SHW(*)PEC |
| SSW | 12" | |
| | 18" | |
| | 24" | |
| | 30" | |
| | 36" | |

(*) Insert Width of Tray

Combination Hold Down Cover Clamp



Designed to secure flat and flanged covers with hold down feature.

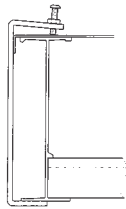
| Material Prefix | Siderail Height | Catalogue Number |
|-----------------|-----------------|------------------|
| SPW | 3" | SPW-3-CCC |
| SSW | 4" | SPW-4-CCC |
| | 5" | SPW-5-CCC |
| | 6" | SPW-6-CCC |
| | 7" | SPW-7-CCC |

Steel Accessories

Steel Cable Tray

Accessories and Covers

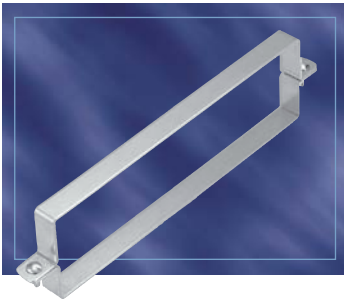
Cover Clamp



Rigid indoor cover clamp for flat and flanged covers.

| Material Prefix | Siderail Height | Catalogue Number |
|-----------------|-----------------|------------------|
| SPW | 3" | (Prefix)-3-SCC |
| SSW | 4" | (Prefix)-4-SCC |
| | 5" | (Prefix)-5-SCC |
| | 6" | (Prefix)-6-SCC |
| | 7" | (Prefix)-7-SCC |

Heavy Duty Cover Clamp

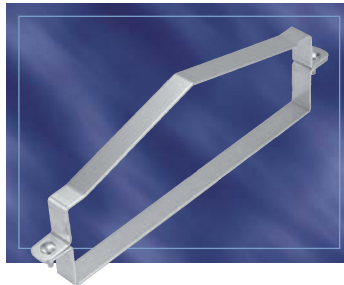


Wrap around design offers added protection for rugged applications and outdoor conditions. Hardware included

| Material Prefix | Siderail Height | Width of Tray | Catalogue Number |
|-----------------|-----------------|---------------|--------------------|
| SPW | 3" | 06" | (Prefix)-3-(*)-HCC |
| SHW | 4" | 09" | (Prefix)-4-(*)-HCC |
| SSW | 5" | 12" | (Prefix)-5-(*)-HCC |
| | 6" | 18" | (Prefix)-6-(*)-HCC |
| | 7" | 24" | (Prefix)-7-(*)-HCC |
| | | 30" | |
| | | 36" | |

(*) Insert Width of Tray.

Heavy Duty Peaked Cover Clamp

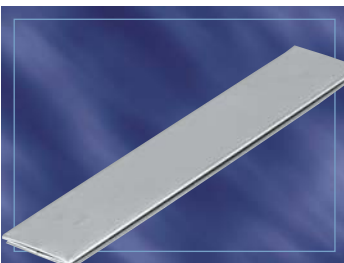


Wrap around design formed to fit peaked cover for outdoor applications. Hardware included.

| Material Prefix | Siderail Height | Width of Tray | Catalogue Number |
|-----------------|-----------------|---------------|--------------------|
| SPW | 3" | 06" | (Prefix)-3-(*)-HPC |
| SHW | 4" | 09" | (Prefix)-4-(*)-HPC |
| SSW | 5" | 12" | (Prefix)-5-(*)-HPC |
| | 6" | 18" | (Prefix)-6-(*)-HPC |
| | 7" | 24" | (Prefix)-7-(*)-HPC |
| | | 30" | |
| | | 36" | |

(*) Insert width of tray.

Cover Joint Strip



Strip used for joining covers end to end.

| Material Prefix | Width of Tray | Catalogue Number |
|-----------------|---------------|------------------|
| SPW | 6" | SPW-(*)-SCS |
| | 9" | |
| | 12" | |
| | 18" | |
| | 24" | |
| | 30" | |
| | 36" | |

(*) Insert width of tray.

Note: material is plastic.

Accessories, Splice Plates

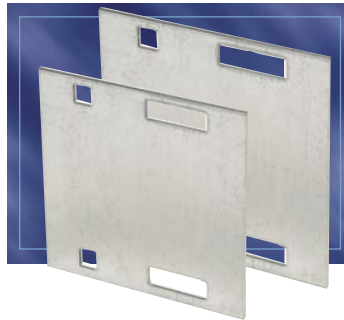
Splice Plate



Packaged in pairs with zinc plated hardware. Provided as standard with each straight and/or fitting.

| Material Prefix | Siderail Height | Catalogue Number |
|-----------------|-----------------|------------------|
| SPW | 3" | (Prefix)-3-SSP |
| SHW | 4" | (Prefix)-4-SSP |
| SSW | 5" | (Prefix)-5-SSP |
| | 6" | (Prefix)-6-SSP |
| | 7" | (Prefix)-7-SSP |

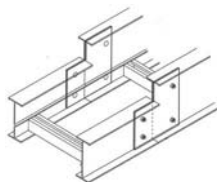
Expansion Splice Plate



Allows for a 1" expansion or contraction of tray system. Packaged in pairs with hardware.

| Material Prefix | Siderail Height | Catalogue Number |
|-----------------|-----------------|------------------|
| SPW | 3" | (Prefix)-3-ESP |
| SHW | 4" | (Prefix)-4-ESP |
| SSW | 5" | (Prefix)-5-ESP |
| | 6" | (Prefix)-6-ESP |
| | 7" | (Prefix)-7-ESP |

Step Down Splice Plate



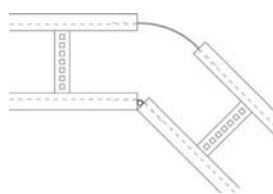
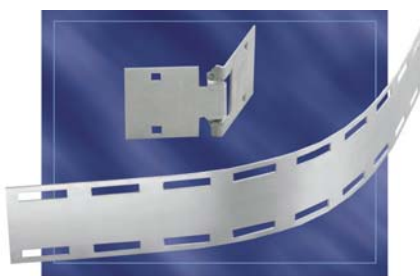
Connects siderails of different heights. Hardware included.

| Material Prefix | Catalogue Number |
|-----------------|-----------------------|
| SPW | (Prefix)-(*)-(**)-SDS |
| SHW | |
| SSW | |

(*) Insert siderail height 1
(**) Insert siderail height 2

Note: Siderail height is greater than siderail height 2.

Horizontal Adjustable Plate



Adjustable hinge plates provide maximum horizontal installation flexibility. Furnished in pairs with hardware.

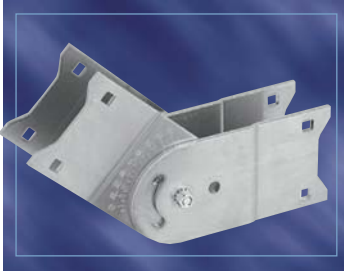
| Material Prefix | For Tray Widths | Catalogue Number |
|-----------------|-----------------|-------------------|
| SPW | 6" | (Prefix)-(*)06HAP |
| SHW | 9" | (Prefix)-(*)09HAP |
| SSW | 12" | (Prefix)-(*)12HAP |
| | 18" | (Prefix)-(*)18HAP |
| | 24" | (Prefix)-(*)24HAP |
| | 30" | (Prefix)-(*)30HAP |
| | 36" | (Prefix)-(*)36HAP |
| | 42" | (Prefix)-(*)42HAP |

(*) Insert Siderail Height.

Steel Cable Tray

Accessories, Splice Plates

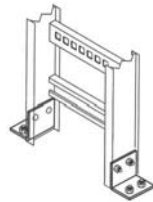
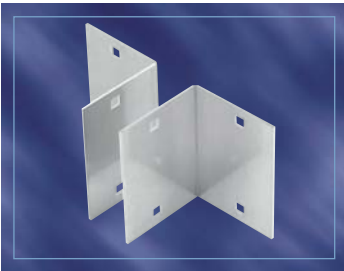
Vertical Adjustable Plate



Hinged vertical plates provide maximum flexibility for changes in elevation. Packaged in pairs with hardware.

| Material Prefix | Siderail Height | Catalogue Number |
|-----------------|-----------------|------------------|
| SPW | 3" | (Prefix)-3-VSP |
| SHW | 4" | (Prefix)-4-VSP |
| SSW | 5" | (Prefix)-5-VSP |
| | 6" | (Prefix)-6-VSP |
| | 7" | (Prefix)-7-VSP |

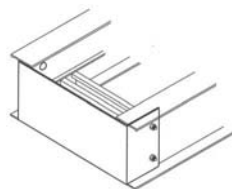
Box to Tray Plates



Designed to secure tray to electrical panels or boxes, walls or end supports. Packaged in pairs with hardware..

| Material Prefix | Siderail Height | Catalogue Number |
|-----------------|-----------------|------------------|
| SPW | 3" | (Prefix)-3-BSP |
| SHW | 4" | (Prefix)-4-BSP |
| SSW | 5" | (Prefix)-5-BSP |
| | 6" | (Prefix)-6-BSP |
| | 7" | (Prefix)-7-BSP |

Closure End Plate

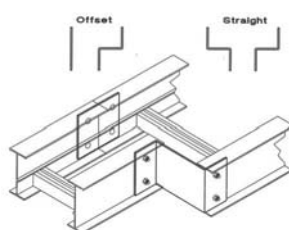
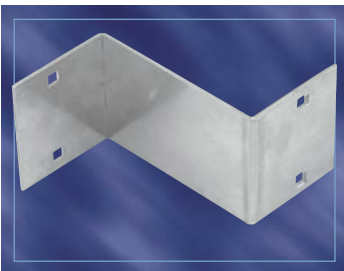


Provides closure for any tray end. Hardware included.

| Material Prefix | Siderail Height | Catalogue Number |
|-----------------|-----------------|--------------------|
| SPW | 3" | (Prefix)-3-(*)-CEP |
| SHW | 4" | (Prefix)-4-(*)-CEP |
| SSW | 5" | (Prefix)-5-(*)-CEP |
| | 6" | (Prefix)-6-(*)-CEP |
| | 7" | (Prefix)-7-(*)-CEP |

* Tray Width

Reducing Splice Plate



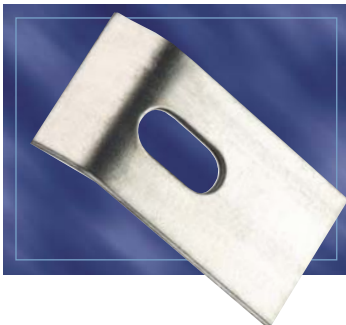
Used in pairs to provide a straight reduction or used with a Standard Splice Plate for an offset reduction. One per package with hardware.

| Material Prefix | Siderail Height | Catalogue Number |
|-----------------|-----------------|--------------------|
| SPW | 3" | (Prefix)-3-(*)-RSP |
| SHW | 4" | (Prefix)-4-(*)-RSP |
| SSW | 5" | (Prefix)-5-(*)-RSP |
| | 6" | (Prefix)-6-(*)-RSP |
| | 7" | (Prefix)-7-(*)-RSP |

*Note: For Offset Reduction: Insert width to be reduced.
For Straight Reduction: Insert 1/2 width to be reduced (2 required)

Example: SPW-503-RSP = 3" offset reducer

Standard Hold down Clamp

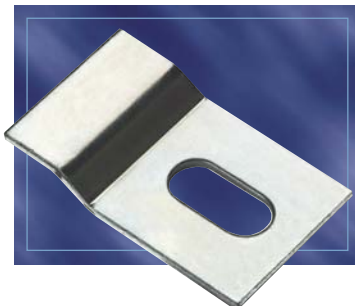


Designed for most indoor installations. Easy to use and install. Order 1/4" hardware separately.

| Material Prefix | Catalogue Number |
|-----------------|------------------|
| SPW SSW | (Prefix)-SHC |
| SPW SSW | (Prefix)-SHC-HDW |

Note: HDW = Supplied complete with 1/4" hardware

Combination Hold Down / Expansion Clamp

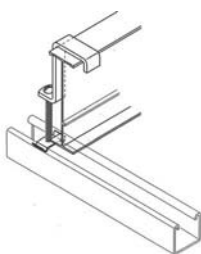


Order 1/4" hardware separately.

| Material Prefix | Catalogue Number |
|-------------------|------------------|
| SPW SHW SSW | (Prefix)-HEC |

Steel
Accessories

Hold Down Clamp



| Material Prefix | Siderail Height | Catalogue Number |
|-----------------|-----------------|------------------|
| SPW | 3" | (Prefix)-3-HDC |
| SSW | 4" | (Prefix)-4-HDC |
| | 5" | (Prefix)-5-HDC |
| | 6" | (Prefix)-6-HDC |
| | 7" | (Prefix)-7-HDC |

Note: Hardware included

Steel Cable Tray

Accessories, Hold Down Clamps / Hardware

Steel Tray Hardware



Square shoulder self-positioning carriage bolt.

| Description | Material | Catalogue Number |
|----------------------------------|-------------------|------------------|
| 1/4" Carriage Bolt | Zinc Plated Steel | SPW-1/4-CB |
| 3/8" Carriage Bolt | Zinc Plated Steel | SPW-3/8-CB |
| 1/4" Hex. Nut | Zinc Plated Steel | SPW-1/4-HN |
| 3/8" Hex. Nut | Zinc Plated Steel | SPW-3/8-HN |
| 3/8" Carriage Bolt | 316 Stainless | SS6W-3/8-CB |
| 3/8" Hex. Nut | 316 Stainless | SS6W-3/8-HN |
| 316 Stainless Steel Hardware Kit | 316 Stainless | SS6W-3/8-HWK* |

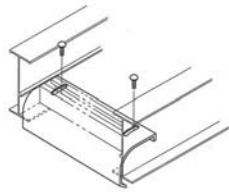
* Contains 8 nuts, 8 bolts, 8 lockwashers

Self-Drilling – Tapping Screw



| Material Prefix | Description | Catalogue Number |
|-------------------|-------------------------------|------------------|
| Zinc Plated Steel | Self-Drilling – Tapping Screw | SPW-10-SCR |

Drop-Out



Designed to provide a smooth radiused surface at any position on the tray or trough bottom. Drop-Outs are easily attached using hardware provided. Standard Radius = 4".

| Material Prefix | Tray Width | Catalogue Number |
|-----------------|------------|-------------------------------|
| SPW | 06 | (Prefix)-(*)-DO |
| SHW | 09 | (Prefix)-(*)-DOS ⁺ |
| SSW | 12 | |
| | 18 | |
| | 24 | |
| | 30 | |
| | 36 | |

(*) Insert Width of Tray
+ DOS = is for solid Tray

Wall Penetration Sleeve



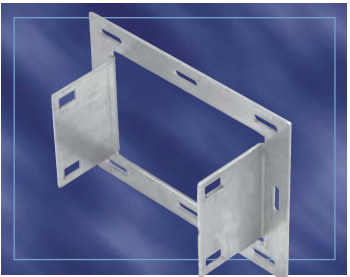
Designed to pass through walls and fire walls. Hardware included.

Note: Not Fire Rated.
Fire Stop not included.

| Material Prefix | Siderail Height | Tray Width | Catalogue Number |
|-----------------|-----------------|------------|-----------------------|
| SPW | 3" | 06 | (Prefix)-(*)-(**)-WPS |
| SHW | 4" | 09 | |
| | 5" | 12 | |
| SSW | 6" | 18 | |
| | 7" | 24 | |
| | | 30 | |
| | | 36 | |

(*) Insert Siderail Height
(**) Insert Width of Tray

Frame Type Tray to Box Plate



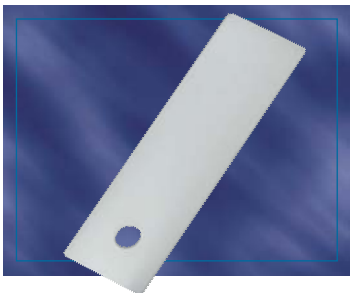
Designed to secure tray to electrical enclosures and panels.

Hardware included.

| Material Prefix | Siderail Height | Tray Width | Catalogue Number |
|-----------------|-----------------|------------|-----------------------|
| SPW | 3" | 06 | (Prefix)-(*)-(**)-FBP |
| SHW | 4" | 09 | |
| SSW | 5" | 12 | |
| | 6" | 18 | |
| | 7" | 24 | |
| | | 30 | |
| | | 36 | |

(*) Insert Siderail Height
(**) Insert Width of Tray

Nylon Expansion Pad



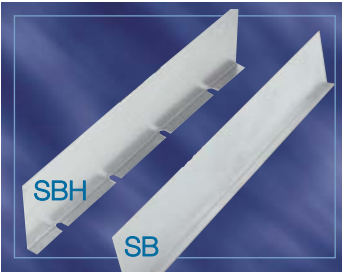
Allows for thermal expansion and contraction of cable trays over supports.

| Material | Catalogue Number |
|---------------|------------------|
| Natural Nylon | ABW-NSP |

Steel Cable Tray

Accessories, Barrier Strips

Barrier Strips



Barrier Strips provide a method of separating cables in tray and trough systems. Easily installed using supplied hardware or Barrier Strip Clamps (sold separately). 72" Barriers are flexible for use with horizontal fittings.

NOTE: 72" barriers provided with 3 SPW10SCR144", 3m barriers provided with self drilling-tapping screw cat. no. SPW10SCR
 72" length, 3 screw
 3m length, 5 screw
 144" length, 6 screw

| Material Prefix | Siderail Height | *Length | Catalogue Number |
|-----------------|-----------------|---------|-----------------------|
| SPW | 3" | 72" | (Prefix)-3-(*)-SBH-72 |
| SHW | 4" | | (Prefix)-4-(*)-SBH-72 |
| SSW | 5" | | (Prefix)-5-(*)-SBH-72 |
| | 6" | | (Prefix)-6-(*)-SBH-72 |
| | 7" | | (Prefix)-7-(*)-SBH-72 |
| SPW | 3" | 144" | (Prefix)-3-SB-(*) |
| SHW | 4" | 3m | (Prefix)-4-SB-(*) |
| SSW | 5" | | (Prefix)-5-SB-(*) |
| | 6" | | (Prefix)-6-SB-(*) |
| | 7" | | (Prefix)-7-SB-(*) |

Note: SHW barriers are only available in 72" or 1500 mm

Inside/Outside Vertical Bend Barriers

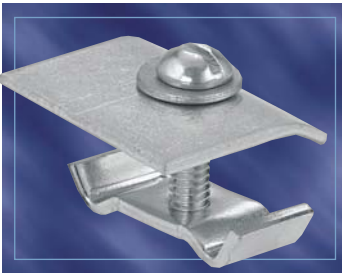


| Material Prefix | Inside Bend Catalogue Number | Outside Bend Catalogue Number | Siderail Height |
|-----------------|------------------------------|-------------------------------|-----------------|
| SPW | (Prefix)-3-VIB-(*)-(+) | (Prefix)-3-VOB-(*)-(+) | 3" |
| SHW | (Prefix)-4-VIB-(*)-(+) | (Prefix)-4-VOB-(*)-(+) | 4" |
| SSW | (Prefix)-5-VIB-(*)-(+) | (Prefix)-5-VOB-(*)-(+) | 5" |
| | (Prefix)-6-VIB-(*)-(+) | (Prefix)-6-VOB-(*)-(+) | 6" |
| | (Prefix)-7-VIB-(*)-(+) | (Prefix)-7-VOB-(*)-(+) | 7" |

Preformed to fit all standard steel vertical bends. Provided with hardware.

(*) Insert Bend Degree (+) Insert Bend Radius

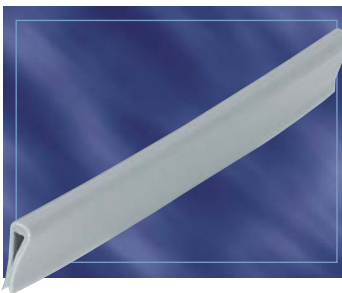
Barrier Strip Clamp



Barrier Strip Clamps mount Barrier Strips to Ladder rungs and Ventilated Trough bottoms. Complete mounting hardware supplied.

| Material Prefix | Catalogue Number |
|-----------------|------------------|
| SPW | (Prefix)-BSC |
| SSW | |

Barrier Strip Splice



Alignment splice for joining connecting Barrier Strips.

| Material | Catalogue Number |
|----------|------------------|
| Plastic | ABW-BSS |

Cable Tray Guide



Expansion guide for single or double runs of cable tray.
No need to field drill channel or I-beam.

| Material | Catalogue Number |
|-------------------|------------------|
| Zinc Plated Steel | SPW-CTG |
| Steel Hot Dip | SHW-CTG |
| Stainless Steel | SSW-CTG |

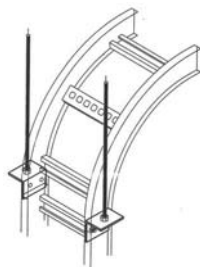
Cable Tray Clamp



Clamps for single run of cable tray.
No need to field drill channel or I-beam.

| Material | Catalogue Number |
|-------------------|------------------|
| Zinc Plated Steel | SPW-CTC |
| Steel Hot Dip | SHW-CTC |
| Stainless Steel | SSW-CTC |

Vertical Tray Hanger



| Material Prefix | Siderail Height | Catalogue Number |
|-----------------|-----------------|------------------|
| SPW | 3" | (Prefix)-(*)-VTH |
| SHW | 4" | |
| SSW | 5" | |
| | 6" | |
| | 7" | |

(*) Insert Siderail Height