

Single or Double Conductors Short Stud

Application

The Blackburn line of Service Post Connectors is designed for applications including steel structure, fence post or transformer grounding involving one or two cables. Service Posts can also be used to tap one or two cables from a bus bar.

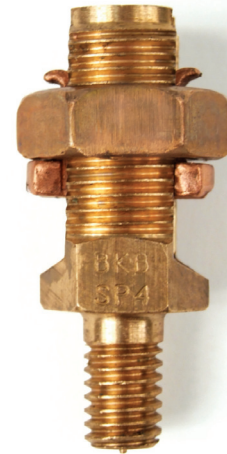
Construction and Ratings

Bolts used in the Service Post are machined from high conductivity bronze alloy while the nuts are cold-formed from high strength, corrosion resistant copper alloy. Pressure bars are copper through 4/0 size, while copper alloy is used for 350 kcmil size and above. Bolts and nuts are of the traditional Blackburn hex design for easy installation.

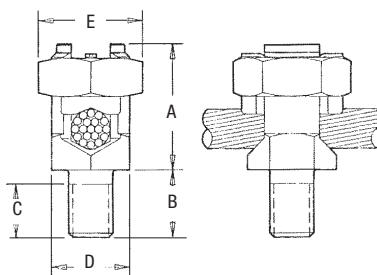
Service Post Connectors are available in sizes accommodating AWG copper conductor ranges of #12-500 kcmil stranded (4mm²-240mm²) and #12-#2 solid (4mm²-35mm²).

The line includes single conductor and double conductor connectors.

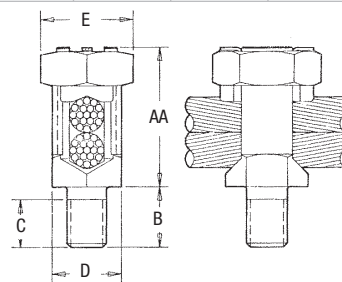
- For copper to copper connections
- For grounding of steel structures, fence posts, transformers using one or two cables
- For tapping one or two cables from a bus bar
- Hex design bolts machined from high conductivity bronze alloy
- Nuts and pressure bars cold-formed from high-strength copper or copper alloy
- CSA Certified and UL Listed



Cat. No.	Cat. No.	Conductor Range (AWG mm ²)				Maximum Diameter Range (in.)	Stud Size	Dimensions (in.)					
		Stranded		Solid				A	AA	B	C	D	E
		max.	min.	max.	min.								
SP0DS	SP0SS	8	8	8	12	0.146-0.080	1/4 - 20 x 1/2	11/16	13/16	1/2	23/64	15/32	1/2
SP1DS	SP1SS	7	10	6	10	0.170-0.102	1/4 - 20 x 1/2	13/16	31/32	1/2	23/64	15/32	21/32
SP2DS	SP2SS	5	10	4	10	0.217-0.102	5/16 - 18 x 5/8	15/16	1-1/8	5/8	25/64	17/32	23/32
SP3DS	SP3SS	3	10	2	10	0.271-0.102	3/8 - 16 x 5/8	1/2	1-1/4	5/8	29/64	5/8	25/32
SP4DS	SP4SS	1	8	2	8	0.332-0.128	3/8 - 16 x 5/8	1-1/16	1-3/8	5/8	29/64	11/16	7/8
SP5DS	SP5SS	1/0	2	2	-	0.385-0.258	1/2 - 13 x 3/4	1-1/4	1-19/32	3/4	37/64	3/4	15/16
SP6DS	SP6SS	2/0	2	2	-	0.443-0.258	1/2 - 13 x 3/4	1-13/32	1-13/16	3/4	37/64	7/8	1-1/16
SP8DS	SP8SS	4/0	1	-	-	0.570-0.289	5/8 - 11 x 1	1-9/16	2-1/16	1	51/64	1	1-5/16
SP9DS	SP9SS	350	1/0	-	-	0.715-0.373	5/8 - 11 x 1	2	2-3/4	1	51/64	1-5/16	1-11/16
SP10DS	SP10SS	500	3/0	-	-	0.840-0.464	3/4 - 10 x 1-1/4	2-1/4	3-1/8	1-1/4	63/64	1-1/2	1-7/8



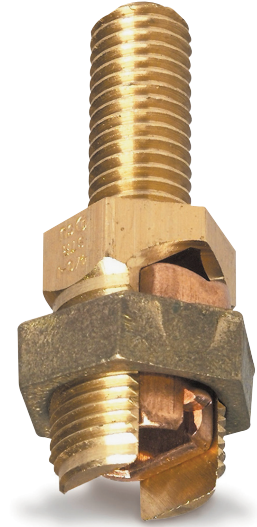
Single Conductor Short Stud



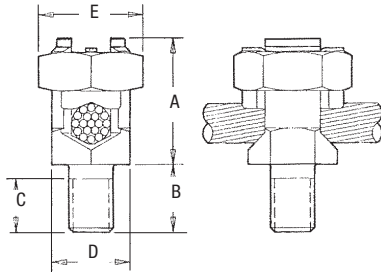
Double Conductors Short Stud

Service Post Connectors

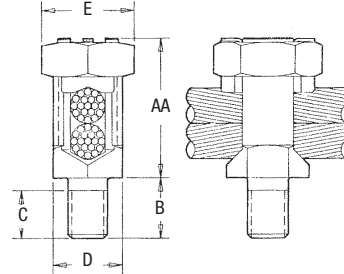
Single or Double Conductors Long Stud



Cat. No.	Cat. No.	Conductor Range (AWG mm ²)				Maximum Diameter Range (in.)	Stud Size	Dimensions (in.)					
		Stranded		Solid				A	AA	B	C	D	E
		max.	min.	max.	min.								
SP0SL	SP0DL	8 —	8 4 mm ²	8 10 mm ²	12 4 mm ²	0.146–0.080	1/4 – 20 x 1	11/16	13/16	1	55/64	15/32	1/2
SP1SL	SP1DL	7 10 mm ²	10 6 mm ²	6 10 mm ²	10 6 mm ²	0.170–0.102	1/4 – 20 x 1	13/16	31/32	1	55/64	15/32	21/32
SP2SL	SP2DL	5 16 mm ²	10 6 mm ²	4 16 mm ²	10 6 mm ²	0.217–0.102	5/16 – 18 x 1	15/16	1-1/8	1	53/64	17/32	23/32
SP3SL	SP3DL	3 25 mm ²	10 6 mm ²	2 35 mm ²	10 6 mm ²	0.271–0.102	3/8 – 16 x 1-1/8	1/2	1-1/4	1-1/8	61/64	5/8	25/32
SP4SL	SP4DL	1 35 mm ²	8 6 mm ²	2 35 mm ²	8 10 mm ²	0.332–0.128	3/8 – 16 x 1-1/8	1-1/16	1-3/8	1-1/8	61/64	11/16	7/8
SP5SL	SP5DL	1/0 50 mm ²	2 35 mm ²	2 35 mm ²	—	0.385–0.258	1/2 – 13 x 1-1/4	1-1/4	1-19/32	1-1/4	1-5/64	3/4	15/16
SP6SL	SP6DL	2/0 70 mm ²	2 35 mm ²	2 35 mm ²	—	0.443–0.258	1/2 – 13 x 1-1/4	1-13/32	1-13/16	1-1/2	1-19/64	7/8	1-1/16
SP8SL	SP8DL	4/0 95 mm ²	1 35 mm ²	—	—	0.570–0.289	5/8 – 11 x 1-1/2	1-9/16	2-1/16	1-1/2	1-19/64	1	1-5/16
SP9SL	SP9DL	350 150 mm ²	1/0 70 mm ²	—	—	0.715–0.373	5/8 – 11 x 1-1/2	2	2-3/4	1-1/2	1-19/64	1-5/16	1-11/16
SP10SL	SP10DL	500 240 mm ²	3/0 95 mm ²	—	—	0.840–0.464	3/4 – 10 x 1-3/4	2-1/4	3-1/8	1-3/4	1-31/64	1-1/2	1-7/8



Single Conductor Long Stud



Double Conductors Long Stud