

Ordinary Location Fittings — Conduit Bodies

OCAL-BLUE Conduit Bodies Quick Reference



File #05043
Up to and including 2"

NOTE: Fittings shown uncoated

		Size in. (mm) 1/2" to 2"									
Shape	Style	1/2 (16)	3/4 (21)	1 (27)	1-1/4 (35)	1-1/2 (41)	2 (53)	2-1/2 (63)	3 (78)	3-1/2 (91)	4 (103)
	Form 7	C17-	C27-	C37-	C47-	C57-	C67-	C77-	C87-	—	—
	Form 8	C18-	C28-	C38-	C448-	C58-	C68-	C78-	C88-	—	—
	Mark 9	C19-	C29-	C39-	C49-	C59-	C69-	C789-	C889-	C989-	C1089-
	Form 7 Aluminum	C17SA-	C27SA-	C37SA-	C47SA-	C57SA-	C67SA-	C77SA-	C87SA-	—	—
	Form 7	L17-	L27-	L37-	L47-	L57-	L67-	—	—	—	—
	Form 7 Aluminum	L17SA-	L27SA-	L37SA-	L47SA-	L57SA-	L67SA-	—	—	—	—
		Double faced — may be use as LL or LR — has 2 openings Not CSA certified									
	Form 7	LB17-	LB27-	LB37-	LB47-	LB57-	LB67-	LB777-	LB87-	LB97-	LB107-
	Form 8	LB18-	LB28-	LB38-	LB448-	LB58-	LB68-	LB78-	LB888-	LB98-	LB108-
	Mark 9	LB19-	LB29-	LB39-	LB49-	LB59-	LB69-	LB789-	LB889-	LB989-	LB1089-
	Form 7 Aluminum	LB17SA-	LB27SA-	LB37SA-	LB47SA-	LB57SA-	LB67SA-	LB777SA-	LB87SA-	LB97SA-	LB107SA-
	Form 7	LL17-	LL27-	LL37-	LL47-	LL57-	LL67-	LL777-	LL87-	LL97-	LL107-
	Form 8	LL18-	LL28-	LL38-	LL448-	LL58-	LL68-	LL78-	LL888-	—	—
	Mark 9	LL19-	LL29-	LL39-	LL49-	LL59-	LL69-	LL789-	LL889-	LL989-	LL1089-
	Form 7 Aluminum	LL17SA-	LL27SA-	LL37SA-	LL47SA-	LL57SA-	LL67SA-	LL777SA-	LL87SA-	LL97SA-	LL107SA-
	Form 7	LR17-	LR27-	LR37-	LR47-	LR57-	LR67-	LR777-	LR87-	LR97-	LR107-
	Form 8	LR18-	LR28-	LR38-	LR448-	LR58-	LR68-	LR78-	LR888-	—	—
	Mark 9	LR19-	LR29-	LR39-	LR49-	LR59-	LR69-	LR789-	LR889-	LR989-	LR1089-
	Form 7 Aluminum	LR17SA-	LR27SA-	LR37SA-	LR47SA-	LR57SA-	LR67SA-	LR777SA-	LR87SA-	LR97SA-	LR107SA-
	Form 7	T17-	T27-	T37-	T47-	T57-	T67-	T77-	T87-	T97-	T107-
	Form 8	T18-	T28-	T38-	T448-	T58-	T68-	T78-	T88-	—	—
	Mark 9	T19-	T29-	T39-	T49-	T59-	T69-	T789-	T889-	T989-	T1089-
	Form 7 Aluminum	T17SA-	T27SA-	T37SA-	T47SA-	T57SA-	T67SA-	T77SA-	T87SA-	T97SA-	T107SA-
	Form 7	TB17-	TB27-	TB37-	TB47-	TB57-	TB67-	—	—	—	—
	Form 8	TB18-	TB28-	TB38-	TB448-	TB58-	TB68-	—	—	—	—
	Mark 9	TB19-	TB29-	TB39-	TB49-	—	—	—	—	—	—
	Form 7 Aluminum	TB17SA-	TB27SA-	TB37SA-	TB47SA-	TB57SA-	TB67SA-	—	—	—	—
	Form 7	X17-	X27-	X37-	X47-	X57-	X67-	—	—	—	—
	Form 8	X18-	X28-	X38-	X448-	X58-	X68-	—	—	—	—
	Mark 9	X19-	X29-	X39-	—	—	—	—	—	—	—
	Form 7 Aluminum	X17SA-	X27SA-	X37SA-	X47SA-	X57SA-	X67SA-	—	—	—	—

*PVC coated "OCAL-BLUE" conduit bodies with covers for threaded rigid conduit series C, LB, LL, LR, T, TB and X with supports 28-4X, 38-4X, 448-4X, J8-4X and 6R-4X. Type 4X ratings in 1/2" (16) to 2" (53) trade size.

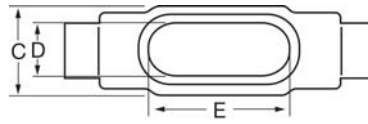
OCAL-BLUE Conduit Body Covers

		Size in. (mm)									
STYLE		1/2 (16)	3/4 (21)	1 (27)	1-1/4 (35)	1-1/2 (41)	2 (53)	2-1/2 (63)	3 (78)	3-1/2 (91)	4 (103)
	Form 7	170F-	270F-	370F-	470F-	570F-	670F-	870F-	870F-	970F-	970F-
	Form 8	180F-	280F-	380F-	480F-	580F-	680F-	880F-	880F-	980F-	980F-
	Mark 9	190-	290-	390-	490-	590-	690-	889-	889-	989-	989-
	Form 7 Aluminum	170SA-	270SA-	370SA-	470SA-	570SA-	670SA-	870SA-	870SA-	970SA-	970SA-

Metric size designator (ANSI C80.1-1994).

Ocal™ Corrosion Protection for Electrical Conduit and Fittings

Ordinary Location Fittings — Conduit Bodies



File #05043
Up to and including 2"

C Form 7 Ferrous Conduit Bodies with Covers

Cat. No.	Hub Size in. (mm)	Dimensions in. (mm)*					Vol. Cap. (cu.in./cu.cm)
		A	B	C	D	E	
C17-	1/2 (16)	5.45 (138.43)	1.40 (35.56)	1.45 (36.83)	0.95 (24.13)	3.20 (81.28)	4.00 (65.55)
C27-	3/4 (21)	6.05 (153.67)	1.60 (40.64)	1.65 (41.91)	1.15 (29.21)	3.80 (96.52)	6.60 (108.15)
C37-	1 (27)	6.75 (171.45)	1.90 (48.26)	1.80 (45.72)	1.35 (34.29)	4.55 (115.57)	10.60 (173.70)
C47-	1-1/4 (35)	7.30 (185.42)	2.30 (58.42)	2.20 (55.88)	1.80 (45.72)	5.00 (127.00)	18.80 (308.08)
C57-	1-1/2 (41)	8.60 (218.44)	2.60 (66.04)	2.45 (62.23)	2.05 (52.07)	5.45 (138.43)	26.40 (432.62)
C67-	2 (53)	9.50 (241.30)	3.20 (81.28)	3.05 (77.47)	2.45 (62.23)	6.40 (162.56)	51.00 (835.74)
C77-	2-1/2 (63)	12.10 (307.34)	3.65 (92.71)	4.25 (107.95)	3.60 (91.44)	8.40 (213.36)	102.00 (1671.48)
C87-	3 (78)	12.10 (307.34)	4.40 (111.76)	4.25 (107.95)	3.60 (91.44)	8.40 (213.36)	132.00 (2163.09)

C Mark 9 Aluminium Conduit Bodies with Covers

Cat. No.	Hub Size in. (mm)	Dimensions in. (mm)*					Vol. Cap. (cu.in./cu.cm)
		A	B	C	D	E	
C19-	1/2 (16)	5.00 (127.00)	1.38 (35.05)	1.38 (35.05)	1.19 (30.23)	3.31 (84.07)	-
C29-	3/4 (21)	5.69 (144.53)	1.63 (41.40)	1.56 (39.62)	1.38 (35.05)	3.94 (100.08)	-
C39-	1 (27)	6.59 (167.39)	1.88 (47.75)	1.75 (44.45)	1.50 (38.10)	4.56 (115.82)	-
C49-	1-1/4 (35)	7.50 (190.50)	2.50 (63.50)	2.19 (55.63)	1.94 (49.28)	5.31 (134.87)	-
C59-	1-1/2 (41)	8.25 (209.55)	2.75 (69.85)	2.50 (63.50)	2.25 (57.15)	6.00 (152.40)	-
C69-	2 (53)	10.50 (266.70)	3.44 (87.38)	3.19 (81.03)	2.88 (73.15)	8.06 (204.72)	-
C789-	2-1/2 (63)	15.63 (397.00)	4.44 (112.78)	5.00 (127.00)	4.25 (107.95)	10.88 (276.35)	-
C889-	3 (78)	15.63 (397.00)	4.81 (122.17)	5.00 (127.00)	4.25 (107.95)	10.88 (276.35)	-
C989-	3-1/2 (91)	18.75 (476.25)	5.69 (144.53)	6.25 (158.75)	5.44 (138.18)	13.44 (341.38)	-
C1089-	4 (103)	18.75 (476.25)	5.94 (150.88)	6.25 (158.75)	5.44 (138.18)	13.44 (341.38)	-

C Form 8 Ferrous Conduit Bodies with Covers

Cat. No.	Hub Size in. (mm)	Dimensions in. (mm)*					Vol. Cap. (cu.in./cu.cm)
		A	B	C	D	E	
C18-	1/2 (16)	5.53 (140.49)	1.44 (36.51)	1.38 (34.93)	1.00 (25.40)	3.31 (84.14)	4.90 (80.30)
C28-	3/4 (21)	6.28 (159.54)	1.53 (38.89)	1.19 (30.16)	1.19 (30.16)	3.94 (100.01)	8.00 (131.10)
C38-	1 (27)	7.31 (185.74)	1.94 (49.21)	1.75 (44.45)	1.38 (34.93)	4.56 (115.89)	13.00 (213.03)
C448-	1-1/4 (35)	8.50 (215.90)	2.38 (60.33)	2.19 (55.56)	1.75 (44.45)	5.31 (134.94)	23.50 (385.10)
C58-	1-1/2 (41)	10.38 (263.53)	2.78 (70.64)	2.75 (69.85)	2.13 (53.98)	6.50 (165.10)	45.00 (737.42)
C68-	2 (53)	12.25 (311.15)	3.56 (90.49)	3.75 (95.25)	3.00 (76.20)	8.56 (217.49)	88.00 (1442.06)
C78-	2-1/2 (63)	15.63 (396.88)	4.44 (112.71)	5.00 (127.00)	4.25 (107.95)	10.88 (276.23)	110.00 (1802.58)
C88-	3 (78)	15.63 (396.88)	4.81 (122.24)	5.00 (127.00)	4.25 (107.95)	10.88 (276.23)	110.00 (1802.58)

C Form 7 Aluminum Conduit Bodies with Covers

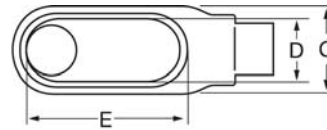
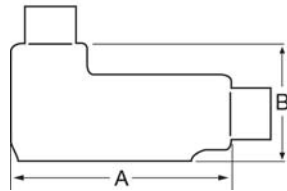
Cat. No.	Hub Size in. (mm)	Dimensions in. (mm)*					Vol. Cap. (cu.in./cu.cm)
		A	B	C	D	E	
C17SA-	1/2 (16)	5.45 (138.43)	1.40 (35.56)	1.45 (36.83)	0.95 (24.13)	3.20 (81.28)	4.00 (65.55)
C27SA-	3/4 (21)	6.05 (153.67)	1.60 (40.64)	1.65 (41.91)	1.15 (29.21)	3.80 (96.52)	6.60 (108.15)
C37SA-	1 (27)	6.75 (171.45)	1.90 (48.26)	1.80 (45.72)	1.35 (34.29)	4.55 (115.57)	10.60 (173.70)
C47SA-	1-1/4 (35)	7.30 (185.42)	2.30 (58.42)	2.20 (55.88)	1.80 (45.72)	5.00 (127.00)	18.80 (308.08)
C57SA-	1-1/2 (41)	8.60 (218.44)	2.60 (66.04)	2.45 (62.23)	2.05 (52.07)	5.45 (138.43)	26.40 (432.62)
C67SA-	2 (53)	9.50 (241.30)	3.20 (81.28)	3.05 (77.47)	2.45 (62.23)	6.40 (162.56)	51.00 (835.74)
C77SA-	2-1/2 (63)	12.10 (307.34)	3.65 (92.71)	4.25 (107.95)	3.60 (91.44)	8.40 (213.36)	102.00 (1671.48)
C87SA-	3 (78)	12.10 (307.34)	4.40 (111.76)	4.25 (107.95)	3.60 (91.44)	8.40 (213.36)	132.00 (2163.09)

Metric size designator (ANSI C80.1-1994).

*Dimensions shown are for uncoated conduit bodies.

Ocal™ Corrosion Protection for Electrical Conduit and Fittings

Ordinary Location Fittings — Conduit Bodies



File #05043
Up to and including 2"

LB Form 7 Ferrous Conduit Bodies with Covers

Cat. No.	Hub Size in. (mm)	Dimensions in. (mm)*					Vol. Cap. (cu.in./cu.cm)
		A	B	C	D	E	
LB17-	1/2 (16)	4.60 (116.84)	2.20 (55.88)	1.35 (34.29)	0.95 (24.13)	3.20 (81.28)	4.00 (65.55)
LB27-	3/4 (21)	5.25 (133.35)	2.40 (60.96)	1.65 (41.91)	1.15 (29.21)	3.80 (96.52)	6.60 (108.15)
LB37-	1 (27)	6.00 (152.40)	2.65 (67.31)	1.80 (45.72)	1.35 (34.29)	4.55 (115.57)	10.60 (173.70)
LB47-	1-1/4 (35)	6.45 (163.83)	3.20 (81.28)	2.20 (55.88)	1.80 (45.72)	5.00 (127.00)	18.80 (308.08)
LB57-	1-1/2 (41)	7.25 (184.15)	3.90 (99.06)	2.45 (62.23)	2.05 (52.07)	5.45 (138.43)	26.40 (432.62)
LB67-	2 (53)	8.30 (210.82)	4.45 (113.03)	3.10 (78.74)	2.45 (62.23)	6.40 (162.56)	51.00 (835.74)
LB777-	2-1/2 (63)	10.55 (267.97)	5.20 (132.08)	4.25 (107.95)	3.60 (91.44)	8.40 (213.36)	102.00 (1671.48)
LB87-	3 (78)	10.55 (267.97)	5.95 (151.13)	4.25 (107.95)	3.60 (91.44)	8.40 (213.36)	132.00 (2163.09)
LB97-	3-1/2 (91)	12.85 (326.39)	6.70 (170.18)	5.25 (133.35)	4.55 (115.57)	10.25 (260.35)	210.00 (3441.28)
LB107-	4 (103)	12.85 (326.39)	7.20 (182.88)	5.25 (133.35)	4.55 (115.57)	10.25 (260.35)	243.00 (3982.06)

LB Form 8 Ferrous Conduit Bodies with Covers

Cat. No.	Hub Size in. (mm)	Dimensions in. (mm)*					Vol. Cap. (cu.in./cu.cm)
		A	B	C	D	E	
LB18-	1/2 (16)	4.94 (125.41)	2.22 (56.36)	1.38 (34.93)	1.00 (25.40)	3.31 (84.14)	4.90 (80.30)
LB28-	3/4 (21)	5.56 (141.29)	2.44 (61.93)	1.56 (39.69)	1.19 (30.16)	3.31 (84.14)	8.00 (131.10)
LB38-	1 (27)	6.50 (165.10)	2.81 (71.45)	1.75 (44.45)	1.38 (34.93)	4.56 (115.89)	13.00 (213.03)
LB448-	1-1/4 (35)	7.53 (191.29)	3.34 (84.93)	2.19 (55.56)	1.75 (44.45)	5.31 (134.94)	23.50 (385.10)
LB58-	1-1/2 (41)	9.13 (231.78)	4.03 (102.39)	2.75 (69.85)	2.13 (53.98)	6.50 (165.10)	45.00 (737.42)
LB68-	2 (53)	11.00 (279.40)	4.41 (111.92)	3.75 (95.25)	3.00 (76.20)	8.56 (217.49)	88.00 (1442.06)
LB78-	2-1/2 (63)	13.94 (354.01)	6.13 (155.58)	5.00 (127.00)	4.25 (107.95)	10.88 (276.23)	110.00 (1802.58)
LB888-	3 (78)	13.94 (354.01)	6.50 (165.10)	5.00 (127.00)	4.25 (107.95)	10.88 (276.23)	110.00 (1802.58)
LB98-	3-1/2 (91)	16.88 (428.63)	7.56 (192.09)	6.25 (158.75)	5.44 (138.11)	13.44 (341.31)	250.00 (4096.77)
LB108-	4 (103)	16.88 (428.63)	7.81 (198.44)	6.25 (158.75)	5.44 (138.11)	13.44 (341.31)	250.00 (4096.77)

Metric size designator (ANSI C80.1-1994).
*Dimensions shown are for uncoated conduit bodies.

LB Mark 9 Aluminum Conduit Bodies with Covers

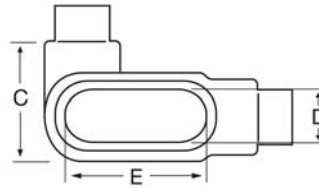
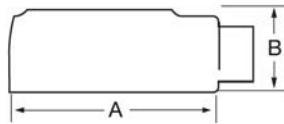
Cat. No.	Hub Size in. (mm)	Dimensions in. (mm)*					Vol. Cap. (cu.in./cu.cm)
		A	B	C	D	E	
LB19-	1/2 (16)	4.59 (116.68)	2.13 (53.98)	1.38 (34.93)	1.19 (30.16)	3.31 (84.14)	—
LB29-	3/4 (21)	5.25 (133.35)	2.41 (61.12)	1.56 (39.69)	1.38 (34.93)	3.94 (100.01)	—
LB39-	1 (27)	6.09 (154.78)	2.84 (72.23)	1.75 (44.45)	1.50 (38.10)	4.56 (115.89)	—
LB49-	1-1/4 (35)	7.03 (178.59)	3.47 (88.11)	2.19 (55.56)	1.94 (49.21)	5.31 (134.94)	—
LB59-	1-1/2 (41)	7.75 (196.85)	3.75 (95.25)	2.50 (63.50)	2.25 (57.15)	6.00 (152.40)	—
LB69-	2 (53)	10.03 (254.79)	4.47 (113.51)	3.19 (80.96)	2.88 (73.03)	8.06 (204.79)	—
LB789-	2-1/2 (63)	13.94 (354.01)	6.13 (155.58)	5.00 (127.00)	4.25 (107.95)	10.88 (276.23)	—
LB889-	3 (78)	13.94 (354.01)	6.50 (165.10)	5.00 (127.00)	4.25 (107.95)	10.88 (276.23)	—
LB989-	3-1/2 (91)	16.88 (428.63)	7.56 (192.09)	6.25 (158.75)	5.44 (138.11)	13.44 (341.31)	—
LB1089-	4 (103)	16.88 (428.63)	7.81 (198.44)	6.25 (158.75)	5.44 (138.11)	13.44 (341.31)	—

LB Form 7 Aluminum Conduit Bodies with Covers

Cat. No.	Hub Size in. (mm)	Dimensions in. (mm)*					Vol. Cap. (cu.in./cu.cm)
		A	B	C	D	E	
LB17SA-	1/2 (16)	4.60 (116.84)	2.20 (55.88)	1.35 (34.29)	0.95 (24.13)	3.20 (81.28)	4.00 (65.55)
LB27SA-	3/4 (21)	5.25 (133.35)	2.40 (60.96)	1.65 (41.91)	1.15 (29.21)	3.80 (96.52)	6.60 (108.15)
LB37SA-	1 (27)	6.00 (152.40)	2.65 (67.31)	1.80 (45.72)	1.35 (34.29)	4.55 (115.57)	10.60 (173.70)
LB47SA-	1-1/4 (35)	6.45 (163.83)	3.20 (81.28)	2.20 (55.88)	1.80 (45.72)	5.00 (127.00)	18.80 (308.08)
LB57SA-	1-1/2 (41)	7.25 (184.15)	3.90 (99.06)	2.45 (62.23)	2.05 (52.07)	5.45 (138.43)	26.40 (432.62)
LB67SA-	2 (53)	8.30 (210.82)	4.45 (113.03)	3.10 (78.74)	2.45 (62.23)	6.40 (162.56)	51.00 (835.74)
LB777SA-	2-1/2 (63)	10.55 (267.97)	5.20 (132.08)	4.25 (107.95)	3.60 (91.44)	8.40 (213.36)	102.00 (1671.48)
LB87SA-	3 (78)	10.55 (267.97)	5.95 (151.13)	4.25 (107.95)	3.60 (91.44)	8.40 (213.36)	132.00 (2163.09)
LB97SA-	3-1/2 (91)	12.85 (326.39)	6.70 (170.18)	5.25 (133.35)	4.55 (115.57)	10.25 (260.35)	210.00 (3441.28)
LB107SA-	4 (103)	12.85 (326.39)	7.20 (182.88)	5.25 (133.35)	4.55 (115.57)	10.25 (260.35)	243.00 (3982.06)

Ocal™ Corrosion Protection for Electrical Conduit and Fittings

Ordinary Location Fittings — Conduit Bodies



File #05043
Up to and including 2"

LL Form 7 Ferrous Conduit Bodies with Covers

Cat. No.	Hub Size in. (mm)	Dimensions in. (mm)*					Vol. Cap. (cu.in./cu.cm)
		A	B	C	D	E	
LL17-	1/2 (16)	4.60 (116.84)	1.40 (35.56)	1.45 (36.83)	0.95 (24.13)	3.20 (81.28)	4.00 (65.55)
LL27-	3/4 (21)	5.25 (133.35)	1.60 (40.64)	1.65 (41.91)	1.15 (29.21)	3.80 (96.52)	6.60 (108.15)
LL37-	1 (27)	6.00 (152.40)	1.90 (48.26)	2.60 (66.04)	1.35 (34.29)	4.55 (115.57)	10.60 (173.70)
LL47-	1-1/4 (35)	6.45 (163.83)	2.30 (58.42)	3.05 (77.47)	1.80 (45.72)	5.00 (127.00)	18.60 (304.80)
LL57-	1-1/2 (41)	7.90 (200.66)	2.60 (66.04)	3.80 (96.52)	2.05 (52.07)	5.45 (138.43)	26.40 (432.62)
LL67-	2 (53)	8.30 (210.82)	3.20 (81.28)	4.25 (107.95)	2.45 (62.23)	6.40 (162.56)	51.00 (835.74)
LL777-	2-1/2 (63)	10.55 (267.97)	3.65 (92.71)	5.80 (147.32)	3.60 (91.44)	8.40 (213.36)	102.00 (1671.48)
LL87-	3 (78)	10.55 (267.97)	4.40 (111.76)	5.80 (147.32)	3.60 (91.44)	8.40 (213.36)	132.00 (2163.09)
LL97-	3-1/2 (91)	12.85 (326.39)	4.90 (124.46)	7.03 (178.56)	4.55 (115.57)	10.25 (260.35)	210.00 (3441.28)
LL107-	4 (103)	12.85 (326.39)	5.40 (137.16)	7.03 (178.56)	4.55 (115.57)	10.25 (260.35)	243.00 (3982.06)

LL Mark 9 Aluminum Conduit Bodies with Covers

Cat. No.	Hub Size in. (mm)	Dimensions in. (mm)*					Vol. Cap. (cu.in./cu.cm)
		A	B	C	D	E	
LL19-	1/2 (16)	4.59 (116.68)	1.38 (34.93)	2.13 (53.98)	1.19 (30.16)	3.31 (84.14)	—
LL29-	3/4 (21)	5.25 (133.35)	1.63 (41.28)	2.38 (60.33)	1.38 (34.93)	3.94 (100.01)	—
LL39-	1 (27)	6.09 (154.78)	1.88 (47.63)	2.63 (66.68)	1.50 (38.10)	4.56 (115.89)	—
LL49-	1-1/4 (35)	7.03 (178.59)	2.50 (63.50)	3.09 (78.58)	1.94 (49.21)	5.31 (134.94)	—
LL59-	1-1/2 (41)	7.75 (196.85)	2.75 (69.85)	3.44 (87.31)	2.25 (57.15)	6.00 (152.40)	—
LL69-	2 (53)	10.03 (254.79)	3.44 (87.31)	4.13 (104.78)	2.88 (73.03)	8.06 (204.79)	—
LL789-	2-1/2 (63)	13.94 (354.01)	4.44 (112.71)	6.69 (169.86)	4.25 (107.95)	10.88 (276.23)	—
LL889-	3 (78)	13.94 (354.01)	4.81 (122.24)	6.69 (169.93)	4.25 (107.95)	10.88 (276.35)	—
LL989-	3-1/2 (91)	16.88 (428.63)	5.69 (144.46)	8.13 (206.38)	5.44 (138.11)	13.44 (341.31)	—
LL1089-	4 (103)	16.88 (428.63)	5.94 (150.81)	8.13 (206.38)	5.44 (138.11)	13.44 (341.31)	—

LL Form 8 Ferrous Conduit Bodies with Covers

Cat. No.	Hub Size in. (mm)	Dimensions in. (mm)*					Vol. Cap. (cu.in./cu.cm)
		A	B	C	D	E	
LL18-	1/2 (16)	4.94 (125.41)	1.44 (36.51)	2.16 (54.77)	1.00 (25.40)	3.31 (84.14)	4.90 (80.30)
LL28-	3/4 (21)	5.56 (141.29)	1.69 (42.86)	2.31 (58.74)	1.19 (30.16)	3.94 (100.01)	8.00 (131.10)
LL38-	1 (27)	6.47 (164.31)	1.94 (49.21)	2.63 (66.68)	1.38 (34.93)	4.56 (115.89)	13.00 (213.03)
LL448-	1-1/4 (35)	7.53 (191.29)	2.38 (60.33)	3.16 (80.17)	1.75 (44.45)	5.31 (134.94)	23.50 (385.10)
LL58-	1-1/2 (41)	9.13 (231.78)	2.78 (70.64)	4.00 (101.60)	2.13 (53.98)	6.50 (165.10)	45.00 (737.42)
LL68-	2 (53)	11.00 (279.40)	3.56 (90.49)	5.00 (127.00)	3.00 (76.20)	8.56 (217.49)	88.00 (1442.06)
LL78-	2-1/2 (63)	13.94 (354.01)	4.44 (112.71)	6.69 (169.86)	4.25 (107.95)	10.88 (276.23)	110.00 (1802.58)
LL888-	3 (78)	13.94 (354.01)	4.81 (122.24)	6.69 (169.86)	4.25 (107.95)	10.88 (276.23)	110.00 (1802.58)

LL Form 7 Aluminum Conduit Bodies with Covers

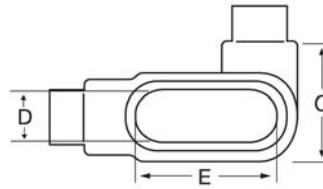
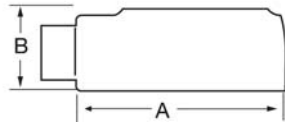
Cat. No.	Hub Size in. (mm)	Dimensions in. (mm)*					Vol. Cap. (cu.in./cu.cm)
		A	B	C	D	E	
LL17SA-	1/2 (16)	4.60 (116.84)	1.40 (35.56)	1.45 (36.83)	0.95 (24.13)	3.20 (81.28)	4.00 (65.55)
LL27SA-	3/4 (21)	5.25 (133.35)	1.60 (40.64)	1.65 (41.91)	1.15 (29.21)	3.80 (96.52)	6.60 (108.15)
LL37SA-	1 (27)	6.00 (152.40)	1.90 (48.26)	2.60 (66.04)	1.35 (34.29)	4.55 (115.57)	10.60 (173.70)
LL47SA-	1-1/4 (35)	6.45 (163.83)	2.30 (58.42)	3.05 (77.47)	1.80 (45.72)	5.00 (127.00)	18.60 (304.80)
LL57SA-	1-1/2 (41)	7.90 (200.66)	2.60 (66.04)	3.80 (96.52)	2.05 (52.07)	5.45 (138.43)	26.40 (432.62)
LL67SA-	2 (53)	8.30 (210.82)	3.20 (81.28)	4.25 (107.95)	2.45 (62.23)	6.40 (162.56)	51.00 (835.74)
LL777SA-	2-1/2 (63)	10.55 (267.97)	3.65 (92.71)	5.80 (147.32)	3.60 (91.44)	8.40 (213.36)	102.00 (1671.48)
LL87SA-	3 (78)	10.55 (267.97)	4.40 (111.76)	5.80 (147.32)	3.60 (91.44)	8.40 (213.36)	132.00 (2163.09)
LL97SA-	3-1/2 (91)	12.85 (326.39)	4.90 (124.46)	7.03 (178.56)	4.55 (115.57)	10.25 (260.35)	210.00 (3441.28)
LL107SA-	4 (103)	12.85 (326.39)	5.40 (137.16)	7.03 (178.56)	4.55 (115.57)	10.25 (260.35)	243.00 (3982.06)

Metric size designator (ANSI C80.1-1994).

*Dimensions shown are for uncoated conduit bodies.

Ocal™ Corrosion Protection for Electrical Conduit and Fittings

Ordinary Location Fittings — Conduit Bodies



File #05043
Up to and including 2"

LR Form 7 Ferrous Conduit Bodies with Covers

Cat. No.	Hub Size in. (mm)	Dimensions in. (mm)*					Vol. Cap. (cu.in./cu.cm)
		A	B	C	D	E	
LR17-	1/2 (16)	4.60 (116.84)	1.40 (35.56)	1.45 (36.83)	0.95 (24.13)	3.20 (81.28)	4.00 (65.55)
LR27-	3/4 (21)	5.25 (133.35)	1.60 (40.64)	1.65 (41.91)	1.15 (29.21)	3.80 (96.52)	6.60 (108.15)
LR37-	1 (27)	6.00 (152.40)	1.90 (48.26)	2.60 (66.04)	1.35 (34.29)	4.55 (115.57)	10.60 (173.70)
LR47-	1-1/4 (35)	6.45 (163.83)	2.30 (58.42)	3.05 (77.47)	1.80 (45.72)	5.00 (127.00)	18.80 (308.08)
LR57-	1-1/2 (41)	7.90 (200.66)	2.60 (66.04)	3.80 (96.52)	2.05 (52.07)	5.45 (138.43)	26.40 (432.62)
LR67-	2 (53)	8.30 (210.82)	3.20 (81.28)	4.25 (107.95)	2.45 (62.23)	6.40 (162.56)	51.00 (835.74)
LR777-	2-1/2 (63)	10.55 (267.97)	3.65 (92.71)	5.80 (147.32)	3.60 (91.44)	8.40 (213.36)	102.00 (1671.48)
LR87-	3 (78)	10.55 (267.97)	4.40 (111.76)	5.80 (147.32)	3.60 (91.44)	8.40 (213.36)	132.00 (2163.09)
LR97-	3-1/2 (91)	12.85 (326.39)	4.90 (124.46)	7.03 (178.56)	4.55 (115.57)	10.25 (260.35)	210.00 (3441.28)
LR107-	4 (103)	12.85 (326.39)	5.40 (137.16)	7.03 (178.56)	4.55 (115.57)	10.25 (260.35)	243.00 (3982.06)

LR Mark 9 Aluminum Conduit Bodies with Covers

Cat. No.	Hub Size in. (mm)	Dimensions in. (mm)*					Vol. Cap. (cu.in./cu.cm)
		A	B	C	D	E	
LR19-	1/2 (16)	4.59 (116.68)	1.38 (34.93)	2.13 (53.98)	1.19 (30.16)	3.31 (84.14)	—
LR29-	3/4 (21)	5.25 (133.35)	1.63 (41.28)	2.38 (60.33)	1.38 (34.93)	3.94 (100.01)	—
LR39-	1 (27)	6.09 (154.78)	1.88 (47.63)	2.63 (66.68)	1.50 (38.10)	4.56 (115.89)	—
LR49-	1-1/4 (35)	7.03 (178.59)	2.50 (63.50)	3.09 (78.58)	1.94 (49.21)	5.31 (134.94)	—
LR59-	1-1/2 (41)	7.75 (196.85)	2.75 (69.85)	3.44 (87.31)	2.25 (57.15)	6.00 (152.40)	—
LR69-	2 (53)	10.03 (254.79)	3.44 (87.31)	4.13 (104.78)	2.88 (73.03)	8.06 (204.79)	—
LR789-	2-1/2 (63)	13.94 (354.01)	4.44 (112.71)	6.69 (169.86)	4.25 (107.95)	10.88 (276.23)	—
LR889-	3 (78)	13.94 (354.08)	4.81 (122.24)	6.69 (169.93)	4.25 (107.95)	10.88 (276.35)	—
LR989-	3-1/2 (91)	16.88 (428.63)	5.69 (144.46)	8.13 (206.38)	5.44 (138.11)	13.44 (341.31)	—
LR1089-	4 (103)	16.88 (428.63)	5.94 (150.81)	8.13 (206.38)	5.44 (138.11)	13.44 (341.31)	—

LR Form 8 Ferrous Conduit Bodies with Covers

Cat. No.	Hub Size in. (mm)	Dimensions in. (mm)*					Vol. Cap. (cu.in./cu.cm)
		A	B	C	D	E	
LR18-	1/2 (16)	4.94 (125.41)	1.44 (36.51)	2.16 (54.77)	1.00 (25.40)	3.31 (84.14)	4.90 (80.30)
LR28-	3/4 (21)	5.56 (141.29)	1.69 (42.86)	2.31 (58.74)	1.19 (30.16)	3.94 (100.01)	8.00 (131.10)
LR38-	1 (27)	6.47 (164.31)	1.94 (49.21)	2.63 (66.68)	1.38 (34.93)	4.56 (115.89)	13.00 (213.03)
LR448-	1-1/4 (35)	7.53 (191.29)	2.38 (60.33)	3.16 (80.17)	1.75 (44.45)	5.31 (134.94)	23.50 (385.10)
LR58-	1-1/2 (41)	9.13 (231.78)	2.78 (70.64)	4.00 (101.60)	2.13 (53.98)	6.50 (165.10)	45.00 (737.42)
LR68-	2 (53)	11.00 (279.40)	3.56 (90.49)	5.00 (127.00)	3.00 (76.20)	8.56 (217.49)	88.00 (1442.06)
LR78-	2-1/2 (63)	13.94 (354.01)	4.44 (112.71)	6.69 (169.86)	4.25 (107.95)	10.88 (276.23)	110.00 (1802.58)
LR888-	3 (78)	13.94 (354.01)	4.81 (122.24)	6.69 (169.86)	4.25 (107.95)	10.88 (276.23)	110.00 (1802.58)

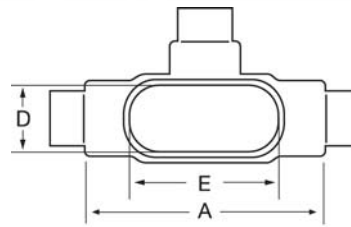
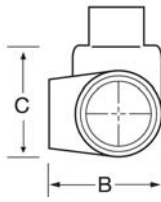
LR Form 7 Aluminum Conduit Bodies with Covers

Cat. No.	Hub Size in. (mm)	Dimensions in. (mm)*					Vol. Cap. (cu.in./cu.cm)
		A	B	C	D	E	
LR17SA-	1/2 (16)	4.60 (116.84)	1.40 (35.56)	1.45 (36.83)	0.95 (24.13)	3.20 (81.28)	4.00 (65.55)
LR27SA-	3/4 (21)	5.25 (133.35)	1.60 (40.64)	1.65 (41.91)	1.15 (29.21)	3.80 (96.52)	6.60 (108.15)
LR37SA-	1 (27)	6.00 (152.40)	1.90 (48.26)	2.60 (66.04)	1.35 (34.29)	4.55 (115.57)	10.60 (173.70)
LR47SA-	1-1/4 (35)	6.45 (163.83)	2.30 (58.42)	3.05 (77.47)	1.80 (45.72)	5.00 (127.00)	18.80 (308.08)
LR57SA-	1-1/2 (41)	7.90 (200.66)	2.60 (66.04)	3.80 (96.52)	2.05 (52.07)	5.45 (138.43)	26.40 (432.62)
LR67SA-	2 (53)	8.30 (210.82)	3.20 (81.28)	4.25 (107.95)	2.45 (62.23)	6.40 (162.56)	51.00 (835.74)
LR777SA-	2-1/2 (63)	10.55 (267.97)	3.65 (92.71)	5.80 (147.32)	3.60 (91.44)	8.40 (213.36)	102.00 (1671.48)
LR87SA-	3 (78)	10.55 (267.97)	4.40 (111.76)	5.80 (147.32)	3.60 (91.44)	8.40 (213.36)	132.00 (2163.09)
LR97SA-	3-1/2 (91)	12.85 (326.39)	4.90 (124.46)	7.03 (178.56)	4.55 (115.57)	10.25 (260.35)	210.00 (3441.28)
LR107SA-	4 (103)	12.85 (326.39)	5.40 (137.16)	7.03 (178.56)	4.55 (115.57)	10.25 (260.35)	243.00 (3982.06)

Metric size designator (ANSI C80.1-1994).
*Dimensions shown are for uncoated conduit bodies.

Ordinary Location Fittings — Conduit Bodies

T



File #05043
Up to and including 2"

T Form 7 Ferrous Conduit Bodies with Covers

Cat. No.	Hub Size in. (mm)	Dimensions in. (mm)*					Vol. Cap. (cu.in./cu.cm)
		A	B	C	D	E	
T17-	1/2 (16)	5.60 (142.24)	1.80 (45.72)	2.35 (59.69)	0.95 (24.13)	3.20 (81.28)	6.00 (98.32)
T27-	3/4 (21)	6.20 (157.48)	2.00 (50.80)	2.60 (66.04)	1.15 (29.21)	3.80 (96.52)	9.10 (149.12)
T37-	1 (27)	7.35 (186.69)	2.30 (58.42)	3.10 (78.74)	1.35 (34.29)	4.55 (115.57)	16.90 (276.94)
T47-	1-1/4 (35)	7.30 (185.42)	2.30 (58.42)	3.05 (77.47)	1.80 (45.72)	5.00 (127.00)	19.30 (316.27)
T57-	1-1/2 (41)	8.60 (218.44)	2.60 (66.04)	3.80 (96.52)	2.05 (52.07)	5.45 (138.43)	27.50 (450.64)
T67-	2 (53)	9.50 (241.30)	3.20 (81.28)	4.25 (107.95)	2.45 (62.23)	6.40 (162.56)	50.00 (819.35)
T77-	2-1/2 (63)	12.10 (307.34)	3.65 (92.71)	5.80 (147.32)	3.60 (91.44)	8.40 (213.36)	102.00 (1671.48)
T87-	3 (78)	12.10 (307.34)	4.40 (111.76)	5.80 (147.32)	3.60 (91.44)	8.40 (213.36)	132.00 (2163.09)
T97-	3-1/2 (91)	14.65 (372.11)	4.90 (124.46)	7.05 (179.07)	4.55 (115.57)	10.25 (260.35)	210.00 (3441.28)
T107-	4 (103)	14.65 (372.11)	5.40 (137.16)	7.05 (179.07)	4.55 (115.57)	10.25 (260.35)	243.00 (3982.06)

T Mark 9 Aluminum Conduit Bodies with Covers

Cat. No.	Hub Size in. (mm)	Dimensions in. (mm)*					Vol. Cap. (cu.in./cu.cm)
		A	B	C	D	E	
T19-	1/2 (16)	5.00 (127.00)	1.38 (34.93)	2.13 (53.98)	1.19 (30.16)	3.31 (84.14)	—
T29-	3/4 (21)	5.69 (144.46)	1.63 (41.28)	2.38 (60.33)	1.38 (34.93)	3.94 (100.01)	—
T39-	1 (27)	6.59 (167.48)	1.88 (47.63)	2.63 (66.68)	1.50 (38.10)	4.56 (115.89)	—
T49-	1-1/4 (35)	7.50 (190.50)	2.50 (63.50)	3.09 (78.58)	1.94 (49.21)	5.31 (134.94)	—
T59-	1-1/2 (41)	8.25 (209.55)	2.75 (69.85)	3.44 (87.31)	2.25 (57.15)	6.00 (152.40)	—
T69-	2 (53)	10.50 (266.70)	3.44 (87.31)	4.13 (104.78)	2.88 (73.03)	8.06 (204.79)	—
T789-	2-1/2 (63)	15.63 (396.88)	4.44 (112.71)	6.69 (169.86)	4.25 (107.95)	10.88 (276.23)	—
T889-	3 (78)	15.63 (396.88)	4.81 (122.24)	6.69 (169.86)	4.25 (107.95)	10.88 (276.23)	—
T989-	3-1/2 (91)	18.75 (476.25)	5.69 (144.46)	8.13 (206.38)	5.44 (138.11)	13.44 (341.31)	—
T1089-	4 (103)	18.75 (476.25)	5.94 (150.81)	8.13 (206.38)	5.44 (138.11)	13.44 (341.31)	—

T Form 7 Aluminum Conduit Bodies with Covers

Cat. No.	Hub Size in. (mm)	Dimensions in. (mm)*					Vol. Cap. (cu.in./cu.cm)
		A	B	C	D	E	
T17SA-	1/2 (16)	5.60 (142.24)	1.80 (45.72)	2.35 (59.69)	0.95 (24.13)	3.20 (81.28)	6.00 (98.32)
T27SA-	3/4 (21)	6.20 (157.48)	2.00 (50.80)	2.60 (66.04)	1.15 (29.21)	3.80 (96.52)	9.10 (149.12)
T37SA-	1 (27)	7.35 (186.69)	2.30 (58.42)	3.10 (78.74)	1.35 (34.29)	4.55 (115.57)	16.90 (276.94)
T47SA-	1-1/4 (35)	7.30 (185.42)	2.30 (58.42)	3.05 (77.47)	1.80 (45.72)	5.00 (127.00)	19.30 (316.27)
T57SA-	1-1/2 (41)	8.60 (218.44)	2.60 (66.04)	3.80 (96.52)	2.05 (52.07)	5.45 (138.43)	27.50 (450.64)
T67SA-	2 (53)	9.50 (241.30)	3.20 (81.28)	4.25 (107.95)	2.45 (62.23)	6.40 (162.56)	50.00 (819.35)
T77SA-	2-1/2 (63)	12.10 (307.34)	3.65 (92.71)	5.80 (147.32)	3.60 (91.44)	8.40 (213.36)	102.00 (1671.48)
T87SA-	3 (78)	12.10 (307.34)	4.40 (111.76)	5.80 (147.32)	3.60 (91.44)	8.40 (213.36)	132.00 (2163.09)
T97SA-	3-1/2 (91)	14.65 (372.11)	4.90 (124.46)	7.05 (179.07)	4.55 (115.57)	10.25 (260.35)	210.00 (3441.28)
T107SA-	4 (103)	14.65 (372.11)	5.40 (137.16)	7.05 (179.07)	4.55 (115.57)	10.25 (260.35)	243.00 (3982.06)

T Form 8 Ferrous Conduit Bodies with Covers

Cat. No.	Hub Size in. (mm)	Dimensions in. (mm)*					Vol. Cap. (cu.in./cu.cm)
		A	B	C	D	E	
T18-	1/2 (16)	5.69 (144.46)	1.75 (44.45)	2.16 (54.77)	1.00 (25.40)	3.31 (84.14)	6.00 (98.32)
T28-	3/4 (21)	6.28 (159.54)	2.00 (50.80)	2.31 (58.74)	1.19 (30.16)	3.94 (100.01)	9.00 (147.48)
T38-	1 (27)	7.31 (185.74)	2.25 (57.15)	2.63 (66.68)	1.38 (34.93)	4.56 (115.89)	15.00 (245.81)
T448-	1-1/4 (35)	8.50 (215.90)	2.63 (66.68)	3.16 (80.17)	1.75 (44.45)	5.31 (134.94)	24.00 (393.29)
T58-	1-1/2 (41)	10.38 (263.53)	2.78 (70.64)	4.00 (101.60)	2.13 (53.98)	6.50 (165.10)	46.50 (762.00)
T68-	2 (53)	12.25 (311.15)	3.56 (90.49)	5.00 (127.00)	3.00 (76.20)	8.56 (217.49)	88.00 (1442.06)
T78-	2-1/2 (63)	15.63 (396.88)	4.44 (112.71)	6.69 (169.86)	4.25 (107.95)	10.88 (276.23)	110.00 (1802.58)
T88-	3 (78)	15.63 (396.88)	4.81 (122.24)	6.69 (169.86)	4.25 (107.95)	10.88 (276.23)	110.00 (1802.58)

Metric size designator (ANSI C80.1-1994).
*Dimensions shown are for uncoated conduit bodies.

Ocal™ Corrosion Protection for Electrical Conduit and Fittings