

Technical Specifications



**CI5404 / CI5408
CI5404IT / CI5408IT**



**CI5410 / CI5432
CI5410IT / CI5432IT**



**CI5004 (-IT) /
CI5008 (-IT)**

Zinc Die Cast Locknut
IT: with insulated
throat.



**CI5010 (-IT) /
CI5016 (-IT)**

Zinc Die Cast Locknut
IT: with insulated
throat.



**CI5020 (-IT) /
CI5032 (-IT)**

Zinc Die Cast Locknut
IT: with insulated
throat.



**CI5054 /
CI5058**

Zinc Die Cast Locknut

Cat. No.		Trade Size
Regular	Insulated	
E.M.T. Set-Screw Connectors (Steel)		
CI5404	CI5404-IT	1/2
CI5406	CI5406-IT	3/4
CI5408	CI5408-IT	1
CI5410	CI5410-IT	1-1/4
CI5412	CI5412-IT	1-1/2
CI5416	CI5416-IT	2
CI5420	CI5420-IT	2-1/2
CI5424	CI5424-IT	3
CI5432	CI5432-IT	4

Concrete-tight

E.M.T. Set-Screw Connectors (Zinc Alloy)		Trade Size	Offset
CI5004	CI5004-IT		
CI5006	CI5006-IT	3/4	
CI5008	CI5008-IT	1	
CI5010	CI5010-IT	1-1/4	
CI5012	CI5012-IT	1-1/2	
CI5016	CI5016-IT	2	
CI5020	CI5020-IT	2-1/2	
CI5024	CI5024-IT	3	
CI5032	CI5032-IT	4	

Concrete-tight

Cat. No.	Trade Size	Offset
E.M.T. Set-Screw Offset Body Connectors (Zinc Alloy)		
CI5054	1/2	3/8
CI5056	3/4	3/4
CI5058	1	3/4

Concrete-tight



Technical Specifications



**CI5504 /
CI5508**



**CI5120 /
CI5132**



**CI5104 /
CI5116**



**CI5164 /
CI5168**



**CI5512 /
CI5532**



CI5153



CI5154

(Steel)	Cat. No.	Trade Size
	(Zinc Alloy)	
E.M.T. Set-Screw Couplings		
	CI5504	1/2
	CI5506	3/4
	CI5508	1
	CI5510	1-1/4
	CI5512	1-1/2
	CI5516	2
	CI5520	2-1/2
	CI5524	3
	-	3-1/2
	CI5532	4

Concrete-tight

Cat. No.	Trade Size	
	E.M.T.	Rigid
E.M.T. / Rigid Couplings (Zinc Alloy)		
CI5164	1/2	1/2
CI5166	3/4	3/4
CI5168	1	1

Concrete-tight

Cat. No.	Trade Size		Clamping Range	
	E.M.T.	Flex	min.	max.
E.M.T. / Flex. Couplings (Zinc Alloy)				
CI5153	1/2	3/8	0.17	0.63
CI5154	1/2	1/2	0.75	0.95



Technical Specifications

- All E.M.T. compression connectors and couplings are concrete-tight.
- Models from 2-1/2 to 4 " are also suitable for rigid and IMC conduit.



**CI5604 (-IT) /
CI5632 (-IT)**

Steel Locknut
IT: with insulated
throat.



**CI5704 /
CI5732**



**CI5804 (-IT) /
CI5832 (-IT)**

Zinc Die Cast Locknut
IT: with insulated
throat.



**CI5904 /
CI5932**



CI7538

Cat. No.				Trade Size
Regular	Insulated	Regular	Insulated	
(Zinc Alloy)		(Steel)		
E.M.T. Compression Connectors				
CI5804	CI5804-IT	CI5604	CI5604-IT	1/2
CI5806	CI5806-IT	CI5606	CI5606-IT	3/4
CI5808	CI5808-IT	CI5608	CI5608-IT	1
CI5810	CI5810-IT	CI5610	CI5610-IT	1-1/4
CI5812	CI5812-IT	CI5612	CI5612-IT	1-1/2
CI5816	CI5816-IT	CI5616	CI5616-IT	2
CI5820	CI5820-IT	CI5620	CI5620-IT	2-1/2
CI5824	CI5824-IT	CI5624	CI5624-IT	3
CI5832	CI5832-IT	CI5632	CI5632-IT	4

Cat. No.		Trade Size
(Zinc Alloy)	(Steel)	
E.M.T. Compression Couplings		
CI5904	CI5704	1/2
CI5906	CI5706	3/4
CI5908	CI5708	1
CI5910	CI5710	1-1/4
CI5912	CI5712	1-1/2
CI5916	CI5716	2
CI5920	CI5720	2-1/2
CI5924	CI5724	3
CI5932	CI5732	4

Cat. No.	Max. Flex. Conduit Dia.	Hole Size
One Hole Double Sided Strap (Galvanized Steel)		
CI7538*	1.05	3/16"

*Any combination of 3/8", 1/2" and 3/4"
EMT, rigid conduit, flexible conduit or teck cables



Technical Specifications



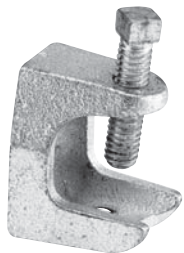
**CI1304 /
CI1316**



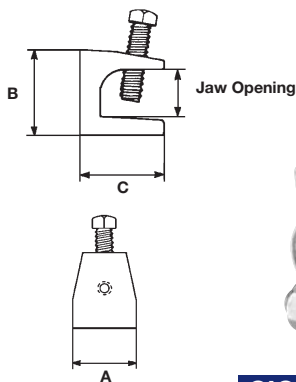
**CI1404 /
CI1416**



**CI1520 /
CI1532**



**500-SC /
503-SC**



**CICH-0404 /
CICH-3232**



Cat. No.	Trade Size	Max. E.M.T. Dia.	Hole Size
One Hole E.M.T. Straps (Galvanized Steel)			
CI1304	1/2	0.71	1/4
CI1306	3/4	0.92	1/4
CI1308	1	1.16	5/16
CI1310	1-1/4	1.51	7/16
CI1312	1-1/2	1.74	7/16
CI1316	2	2.20	9/16
Two Hole E.M.T. Straps (Galvanized Steel)			
CI1404	1/2	0.71	3/16
CI1406	3/4	0.92	3/16
CI1408	1	1.16	3/16
CI1410	1-1/4	1.51	1/4
CI1412	1-1/2	1.74	1/4
CI1416	2	2.20	3/8
CI1520	2-1/2	2.88	3/8
CI1524	3	3.50	3/8
CI1528	3-1/2	4.00	1/2
CI1532	4	4.50	1/2

Cat. No.	Trade Size	Jaw Opening	Tap Base and Back	Dimensions		
				A	B	C
Beam Clamps (Malleable Iron)						
500-SC	1/4NC	15/16	1/4-20	1	1-1/4	1-7/16
501	5/16NC	7/8	5/16-18	1-9/16	1-9/16	1-11/16
502	3/8NC	1	3/8-16	2	1-7/8	1-3/4
503-SC	1/2NC	1	1/2-13	2-1/2	2-3/8	2-3/8

Cat. No.	Trade Size	
	E.M.T.	Rigid
Conduit Hangers-Steel (with nuts & bolts)		
CICH-0404	1/2	1/2
CICH-0606	3/4	3/4
CICH-0808	1	1
CICH-0010	1-1/4	—
CICH-1012	1-1/2	1-1/4
CICH-1200	—	1-1/2
CICH-1616	2	2
CICH-2020	2-1/2	2-1/2
CICH-2424	3	3
CICH-2828	3-1/2	3-1/2
CICH-3232 *	4	4

Cat. No.	Trade Size	
	E.M.T.	Rigid
Conduit Hangers-Steel (without nuts & bolts)		
6H0	1/2	3/8&1/2
6H1	3/4	3/4
6H2	1	1
6H2-1/2	1-1/4	—
6H3-SC	1-1/2	1-1/4
6H4	—	1-1/2
6H5	2	2
6H6	2-1/2	2-1/2
6H7	3	3
6H8	3-1/2	3-1/2
6H9 *	4	4

* Not CSA certified

* Not CSA certified

Technical Specifications



CI5204 / CI5206

Zinc Die Cast Locknut

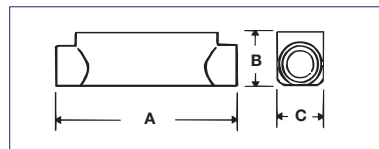


CI5304 / CI5306
CI5308-G / CI5310-G

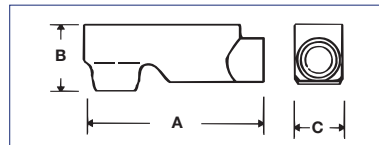
-G: with gasket.



CICA-1/2 / CICA-2



CILBA-1/2 / CILBA-2
CILBSA-2-1/2 / CILBSA-4



Cat. No.	Trade Size	Dimensions		
		A	B	C
Pull Elbows, E.M.T. to Box (Zinc Alloy)				
CI5204	1/2	1-5/16	1-1/8	—
CI5206	3/4	1-1/2	1-1/4	—
Pull Elbows, E.M.T. to E.M.T. (Zinc Alloy)				
CI5304	1/2	1-5/16	15/16	—
CI5306	3/4	1-5/8	1-1/4	—
CI5308-G	1	1-15/16	1-5/8	—
CI5310-G	1-1/4	2-1/4	2	—
E.M.T. Conduit Fittings - "C" Type (Cast Aluminum)				
CICA-1/2	1/2	4-7/8	1-3/8	1-3/8
CICA-3/4	3/4	5-9/16	1-1/2	1-7/16
CICA-1	1	6-1/2	1-3/4	1-3/4
CICA-1-1/4	1-1/4	8-5/8	1-15/16	2-1/2
CICA-1-1/2	1-1/2	8-5/8	2-11/16	2-1/2
CICA-2	2	10-15/16	3	3-3/16
E.M.T. Conduit Fittings - "LB" Type (Cast Aluminum)				
CILBA-1/2	1/2	4-5/16	1-1/2	1-3/8
CILBA-3/4	3/4	4-15/16	1-7/8	1-9/16
CILBA-1	1	6-1/16	2-1/16	1-13/16
CILBA-1-1/4	1-1/4	7-7/8	2-15/16	2-1/2
CILBA-1-1/2	1-1/2	7-7/8	3-1/16	2-1/2
CILBA-2	2	10	3-3/4	3-3/16
CILBSA-2-1/2	2-1/2	13	7-3/8	4-1/4
CILBSA-3	3	13	7-3/8	4-1/4
CILBSA-3-1/2	3-1/2	15-1/4	9	5-1/4
CILBSA-4	4	15-1/4	9	5-1/4

Covers and gaskets are included with all aluminum conduit fittings. Types CICA and CILBA are also suitable for use with rigid conduit.

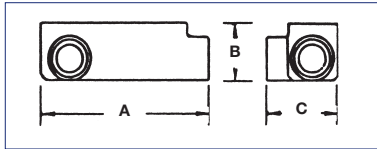


Technical Specifications

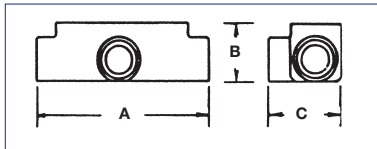


**CILRL-1/2 /
CILRL-2**

Combined LL/LR
Left and right
application



**CITA-1/2 /
CITA-2**



**CIBC-1/2 /
CIBC-2**



**CIG-1/2 /
CIG-2**



**CIEFSA-1/2 /
CIEFSA-4**

Cat. No.	Trade Size	Dimensions		
		A	B	C
E.M.T. Conduit Fittings - "LRL" Type (Cast Aluminum)				
CILRL-1/2	1/2	4-7/16	1-11/16	2-1/8
CILRL-3/4	3/4	5-3/16	1-7/8	2-1/4
CILRL-1	1	6	2-3/16	2-1/2
CILRL-1-1/4	1-1/4	7-15/16	2-3/4	3-1/2
CILRL-1-1/2	1-1/2	7-15/16	3-1/4	3-1/2
CILRL-2	2	10-3/16	3-11/16	4-1/8
E.M.T. Conduit Fittings - "T" Type (Cast Aluminum)				
CITA-1/2	1/2	4-7/8	1-3/8	2-1/16
CITA-3/4	3/4	5-9/16	1-3/4	2-1/8
CITA-1	1	6-1/2	2	2-1/2
CITA-1-1/4	1-1/4	8-11/16	2-5/8	3-1/2
CITA-1-1/2	1-1/2	8-11/16	3	3-9/16
CITA-2	2	10-7/8	3-1/4	4-3/16

Covers and gaskets are included with all aluminum conduit fittings.
Types CILRL and CITA are also suitable for use with rigid conduit.

Cat. No.	Trade Size	Cat. No.	Trade Size
Blank Covers for Aluminum Conduit Fittings (Stamped Aluminum)		Gaskets for Aluminum Conduit Fittings (Neoprene)	
CIBC-1/2	1/2	CIG-1/2	1/2
CIBC-3/4	3/4	CIG-3/4	3/4
CIBC-1	1	CIG-1	1
CIBC-1-1/4	1-1/4	CIG-1-1/4	1-1/4
CIBC-2	2	CIG-2	2

For 1-1/2, use CIBC-1-1/4

For 1-1/2, use CIG-1-1/4

Cat. No.	Trade Size
Service Entrance Heads (Cast Aluminum)	
CIEFSA-1/2	1/2
CIEFSA-3/4	3/4
CIEFSA-1	1
CIEFSA-1-1/4	1-1/4
CIEFSA-1-1/2	1-1/2
CIEFSA-2	2
CIEFSA-2-1/2	2-1/2
CIEFSA-3	3
CIEFSA-3-1/2	3-1/2
CIEFSA-4	4

Consult page 10 for technical specifications

