

C-Tap Connectors for Copper Conductor

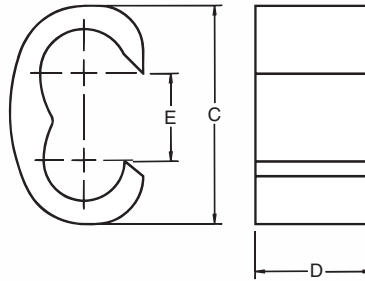
Easy to work with in tight spaces.

C-Taps — Large Size for 600V Applications

- More economical than other taps and split bolts in terms of purchase, inventory, installation time, insulation and maintenance
- Color-coded for easy matching with proper die
- Barely larger than conductor insulation once installed

Material: High-Conductivity Wrought Copper

Finish: Plain



CAT. NO.	WIRE SIZE		DIMENSIONS (IN.)			INSTALLING DIE		DIE CODE	NO. OF CRIMPS	COLOR KEY
	MAIN	BRANCH	C	D	E	TOOL	CAT NO.			
54755	#1	#1								BLUE
	1/0	1/0-#2				TBM14M	15512	76	1	
	2/0	2/0-#4	1 ¹ / ₁₆	3/4	1 ¹ / ₂	TBM15I	15512*	76		
	3/0	1/0-#6				TBM12	TBM12D-4	76		
4/0	#1-#8				13100A	15512	76			
54760	2/0	2/0-#1				TBM14M	15506	87H	2	BROWN
	3/0	3/0-#3	1 ¹ / ₁₆	3/4	1 ¹ / ₂	TBM15I	15506*	87H		
	4/0	4/0-#4				TBM12	TBM12D-3	87H		
	250 kcmil	#1-#8				13100A	15506	87H		
54765	2/0	2/0-#1				TBM14M	15505	99H	2	PINK
	3/0	3/0-#2				TBM15I	15505*	99H		
	4/0	4/0-#4	1 ¹ / ₁₆	1	4 ¹ / ₄	TBM12	TBM12D-2	99H		
	250 kcmil	3/0-#6				13100A	15505	99H		
54770	4/0	4/0-2/0				TBM14M	15515	106H	2	BLACK
	250 kcmil	250-#1	1 ¹ / ₁₆	1	1 ¹ / ₁₆	TBM15I	15515*	106H		
	300 kcmil	4/0-#4				TBM12	TBM12D-2	106H		
	350 kcmil	3/0-#6				13100A	15515	106H		
54775**	250 kcmil	250 kcmil				TBM14M	15504	115H	2	YELLOW
	300 kcmil	300-3/0				TBM15I	15504*	115H		
	350 kcmil	350-1/0	1 ¹ / ₁₆	1 ¹ / ₄	1 ¹ / ₁₆	TBM12	TBM12D-1	115H		
	400 kcmil	300-#2				13100A	15504	115H		
	450 kcmil	250-#4								
500 kcmil	250-#6									
54780	350 kcmil	350-4/0				TBM15I	15603	125H	2	N/A
	400 kcmil	400-2/0	2 ³ / ₁₆	1 ¹ / ₄	5 ³ / ₄					
	450 kcmil	450-#1								
	500 kcmil	500-#2								
54785	750 kcmil	4/0-#6	2 ¹ / ₁₆	2	1	TBM15I	15603	125H	3	N/A
54790	750 kcmil	750-4/0	2 ¹ / ₁₆	2	1 ¹ / ₁₆	TBM15I	15603	125H	3	N/A

UL approved for direct burial.

For covers see page B48.

Taps can be supplied tin-plated. Add suffix "TP" to any catalog number (i.e., 54725TP).

* Cat. No. 15500-TB adapter required if using TBM15I and 155XX series dies.

** #6 AWG branch must be doubled.

Tooling: pp. B76-B92

Die Selector Chart: pp. B93-B95