

T&B® Fittings

RE, PLG, REC Reducers, Plugs and Adapters Explosion-Proof, Dust-Ignition-Proof

T&B Fittings

Application

- RE and REC reducers are used in threaded heavy wall conduit systems
- RE reduces conduit hubs to a smaller size
- REC connects two different sizes of conduit together or is used to replace a coupling and reducer in an installation
- PLG plugs are used for closing threaded conduit hubs

Features

- All Hubs have NPT threads with a minimum of five full threads and integral bushing for preventing damage to wires

Materials

- Machined Reducers: Steel
- Cast Reducers: Gray Iron
- Funnel Reducers: Iron
- Recessed Plugs: Gray Iron
- Red•Dot® Recessed Plugs: Copper-free Aluminum

Standard Finishes

- Cast zinc-plated with aluminum acrylic paint
- Machine zinc-plated with clear chromate finish



Listings/Compliances

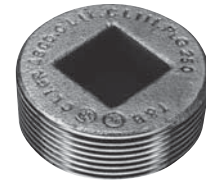
- UL: 886
- CSA: C22.2 No.30
- Cl.I, Div. 1 & 2, Groups A, B, C, D
- Cl.II, Div. 1, Groups E, F, G
- Cl.III, Div. 1 & 2

- Explosion-Proof

- Dust-Ignition-Proof

For hazardous and non-hazardous locations

Recessed Plugs



CAT. NO.	THREADS (NPT)
----------	---------------

With Flush Head for Hazardous and Non-Hazardous Locations

PLG1-TB	½
PLG2-TB	¾
PLG3-TB	1
PLG4-TB	1¼
PLG5-TB	1½
PLG6-TB	2
PLG7-TB	2½
PLG8-TB	3
PLG9-TB	3½
PLG10-TB	4

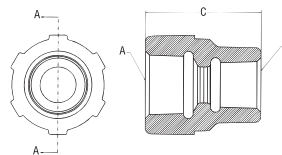
Reducing Bushings



CAT. NO.	A MALE (NPT)	B FEMALE (NPT)
RE21-TB	¾	½
RE31-TB	1	½
RE32-TB	1	¾
RE41-TB	1¼	½
RE42-TB	1¼	¾
RE43-TB	1¼	1
RE51-TB	1½	½
RE52-TB	1½	¾
RE53-TB	1½	1
RE54-TB	1½	1¼
RE61-TB	2	½
RE62-TB	2	¾
RE63-TB	2	1
RE64-TB	2	1¼
RE65-TB	2	1½

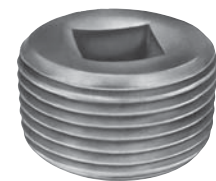
CAT. NO.	A MALE (NPT)	B FEMALE (NPT)
RE73-TB	2½	1
RE74-TB	2½	1¼
RE75-TB	2½	1½
RE76-TB	2½	2
RE83-TB	3	1
RE84-TB	3	1¼
RE85-TB	3	1½
RE86-TB	3	2
RE87-TB	3	2½
RE96-TB	3½	2
RE97-TB	3½	2½
RE98-TB	4	3
RE106-TB	4	2
RE107-TB	4	2½
RE108-TB	4	3

REC Series Reducers



CAT. NO.	A (NPT)	B (NPT)	C
<i>Funnel-Shaped Reducers for Hazardous and Non-Hazardous Locations</i>			
REC21-TB	¾	½ - 14	1½
REC31-TB	1	½ - 14	2
REC32-TB	1	¾ - 14	2

Aluminum Recessed Plugs



CAT. NO.	HUB SIZE
----------	----------

With Flush Head for Hazardous and Non-Hazardous Locations

XPLG-1†	½"
XPLG-2†	¾"
XPLG-3†	1"
XPLG-4*	1¼"
XPLG-5*	1½"
XPLG-6*	2"

Made to order items. Consult factory for lead time and minimum quantities.

† Not UL Listed

* UL Listed E 34438