

Grande™ Series

Edge-lit Exit Sign
Compact Emergency Lighting Units

PROJECT LOCATION _____
DATE _____
CONTRACTOR _____
PREPARED BY _____
LUMACELL
MODEL _____

GRANDE™ SERIES

FEATURES

- Designed with aesthetics, ease of installation and performance in mind
- Simple, compact and contemporary design
- Wall-mount or ceiling-mount installation
- Two-piece housing of injection-molded thermoplastic
- Two MR16 halogen lamps, shielded by clear polycarbonate covers
- Available with long lasting MR16 LED lamps
- Sealed, maintenance-free, Lead-Calcium
- Dual voltage input: 120/347 Vac.
- Up to 150W of total battery capacity
- Auto-test (optional)
- NEXUS® interface (optional)
- Listed CSA 22.2 No.141

TYPICAL SPECIFICATIONS

Supply and install the Lumacell **Grande™ Series** battery unit equipment. The unit construction shall include a housing and a front cover, high-impact thermoplastic moulded in white. No screws shall be necessary to hold the front cover to the housing. The unit shall be equipped with two emergency heads with adjustable swivels and MR-16 lamps of _____ V _____ W protected by snap-on shock-absorbent, clear polycarbonate covers. The unit shall be suitable for wall mount or as otherwise specified.

The unit equipment shall have a dual-voltage input of 120/347Vac and shall be equipped with a test switch and a green pilot light, located on the left side. The housing shall host the battery and the battery charger. The battery charger and other unit functions shall be driven by a micro-controller. All electronic circuitry shall be installed on a single printed circuit board.

When specified, the unit equipped with Auto-test shall automatically self-test for one minute every 30 days, 10 minutes in the 6th month and 30 minutes annually. When a fault is detected, the bi-color pilot light shall turn from green to red and start flashing. A legend on a label next to the pilot light shall display the source of failure: battery, charger circuitry or lamp load.

The unit equipment shall be listed to the standard CSA 22.2 No.141.

The unit equipment shall be **Lumacell** model: _____



WIRE GUARDS

460.0114-L	Wall Mount or flat ceiling mount
------------	----------------------------------

REPLACEMENT LAMPS

ORDERING CODE	TYPE	VOLTAGE/ WATTAGE
580.0097-L	MR16 LED	6V-4W
580.0079-L	MR16 halogen	6V-10W
580.0080-L	MR16 halogen	12V-12W
580.0064-L	MR16 halogen	12V-20W
580.0093-L	MR16 LED	12V-4W

IN THE SAME FAMILY:

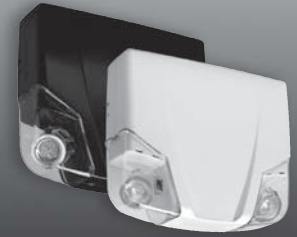
	- Grande™ Series thermoplastic EXIT sign unit	p.TBD
	- Grande™ Series thermoplastic combination unit	p.TBD



Grande™ Series

Edge-lit Exit Sign

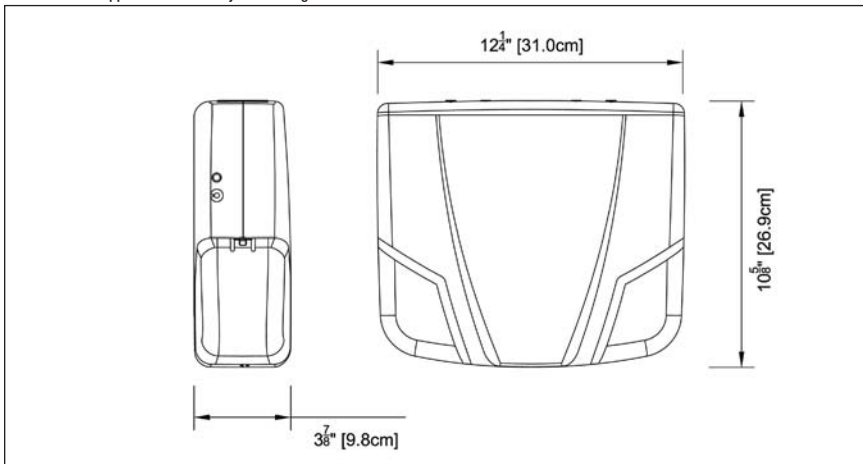
Compact Emergency Lighting Units



GRANDE™ SERIES

DIMENSIONS

Dimensions are approximate and subject to change.



POWER CONSUMPTION

MODEL	AC SPECS		WATTAGE CAPACITY				
			30MIN	1H00	1H30	2H00	4H00
A40	120/347Vac	0.25 / 0.09 A	40	23	16	12	-
A72			72	42	30	24	12
A80			80	44	32	26	13
12A120			120	70	50	40	20
12A150			150	84	60	48	24

ORDERING INFORMATION

SERIES	CAPACITY	HEADS	LAMPS TYPE AND WATTAGE	COLOUR	VOLTAGE	UNIT TYPE	OPTIONS
GRA = 6 volts	40 = 40 watts 72 = 72 watts	0 = no head 2 = two heads	LD1 = 6V - 6 watts, MR16 LED LD7 = 12V - 4 watts, MR16 LED M6 = 6V - 6 watts MR16 M10 = 6V, 12V - 10 watts MR16 M12 = 12V - 12 watts MR16 M20 = 12V - 20 watts MR16	W = factory white B = black	Blank = 120/347Vac ZC = 120/277Vac	Blank = standard AT = Auto-test ATN = Auto-test non-audible NEX = NEXUS® system interface NEXRF = NEXUS® system wireless	Blank = no option T3 = time delay 15 min LC = line cord (120V only) CM = ceiling mount
GR12A = 12 volts	80 = 80 watts 120 = 120 watts 150 = 150 watts						

EXAMPLE: GRA402M6W

FLAT CEILING MOUNT

