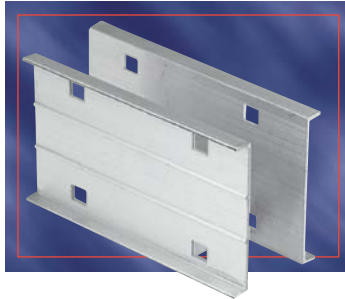


Accessories Splice Plates

Aluminum Cable Tray

Snap-In Splice Plate



Designed to lock into place for easy alignment and installation.

Packaged in pairs with zinc plated hardware.

Provided as standard with each straight and/or fitting.

Catalogue Number	Material	Siderail Height
ABW-4-SSP	Aluminum	4"
ABW-5-SSP		5"
ABW-6-SSP		6"
ABW-7-SSP		7"

Snap-In Expansion Splice Plate

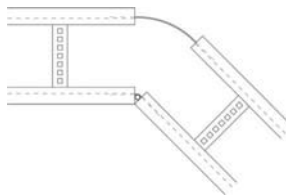
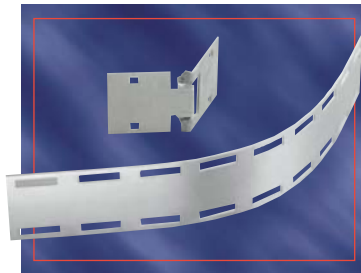


Allows for a 1" expansion or contraction of tray system.

Packaged in pairs with zinc plated hardware.

Catalogue Number	Material	Siderail Height
ABW-4-ESP	Aluminum	4"
ABW-5-ESP		5"
ABW-6-ESP		6"
ABW-7-ESP		7"

Horizontal Adjustable Plate



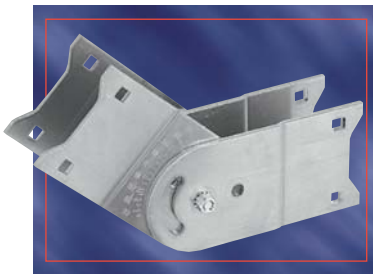
Adjustable hinge plates provide maximum horizontal installation flexibility.

Furnished in pairs with hardware.

Catalogue Number	Material	For Tray Widths
ABW(*)06HAP	Aluminum	6"
ABW(*)09HAP		9"
ABW(*)12HAP		12"
ABW(*)18HAP		18"
ABW(*)24HAP		24"
ABW(*)30HAP		30"
ABW(*)36HAP		36"
ABW(*)42HAP		42"

(*) Insert Siderail Height.

Vertical Adjustable Plate



Hinged vertical plates provide maximum flexibility for changes in elevation.

Furnished in pairs with hardware.

Catalogue Number	Material	Siderail Height
ABW-4-VSP	Aluminum	4"
ABW-5-VSP		5"
ABW-6-VSP		6"
ABW-7-VSP		7"

Aluminum
Accessories