

Hazardous Location Fittings

Reducers, Plugs and Adapters

Application

- RE and REC reducers are used in threaded heavy wall conduit systems
- RE reduces conduit hubs to a smaller size
- REC connects two different sizes of conduit together or is used to replace a coupling and reducer in an installation
- PLG plugs are used for closing threaded conduit hubs



Features

- All Hubs have NPT threads with a minimum of five full threads and integral bushing for preventing damage to wires

Materials

Machined Reducers: Steel
 Cast Reducers: Gray Iron
 Funnel Reducers: Iron
 Recessed Plugs: Gray Iron
 Red•Dot® Recessed Plugs:
 Copper-free aluminum

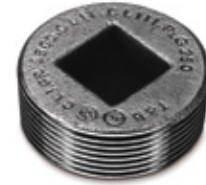
Listings/Compliances

UL: 886
 CSA: C22.2 No.30
 Cl. I, Div. 1 & 2, Groups A, B, C, D
 Cl. II, Div. 1, Groups E, F, G
 Cl. III, Div. 1 & 2
 Explosion-Proof
 Dust-Ignition-Proof
 For hazardous and non-hazardous locations

Standard Finishes

Cast zinc plated with aluminum acrylic paint
 Machine zinc plated with clear chromate finish

Recessed Plugs



| CAT. NO. | THREADS (NPT) |
|--|---------------|
| <i>With Flush Head for Hazardous and Non-Hazardous Locations</i> | |
| PLG1-TB | 1/2 |
| PLG2-TB | 3/4 |
| PLG3-TB | 1 |
| PLG4-TB | 1 1/4 |
| PLG5-TB | 1 1/2 |
| PLG6-TB | 2 |
| PLG7-TB | 2 1/2 |
| PLG8-TB | 3 |
| PLG9-TB | 3 1/2 |
| PLG10-TB | 4 |

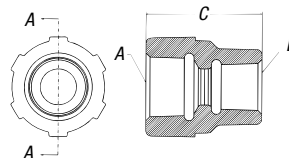
Reducing Bushings



| CAT. NO. | A MALE (NPT) | B FEMALE (NPT) |
|----------|--------------|----------------|
| RE21-TB | 3/4 | 1/2 |
| RE31-TB | 1 | 1/2 |
| RE32-TB | 1 | 3/4 |
| RE41-TB | 1 1/4 | 1/2 |
| RE42-TB | 1 1/4 | 3/4 |
| RE43-TB | 1 1/4 | 1 |
| RE51-TB | 1 1/2 | 1/2 |
| RE52-TB | 1 1/2 | 3/4 |
| RE53-TB | 1 1/2 | 1 |
| RE54-TB | 1 1/2 | 1 1/4 |
| RE61-TB | 2 | 1/2 |
| RE62-TB | 2 | 3/4 |
| RE63-TB | 2 | 1 |
| RE64-TB | 2 | 1 1/4 |
| RE65-TB | 2 | 1 1/2 |

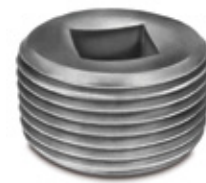
| CAT. NO. | A MALE (NPT) | B FEMALE (NPT) |
|----------|--------------|----------------|
| RE73-TB | 2 1/2 | 1 |
| RE74-TB | 2 1/2 | 1 1/4 |
| RE75-TB | 2 1/2 | 1 1/2 |
| RE76-TB | 2 1/2 | 2 |
| RE83-TB | 3 | 1 |
| RE84-TB | 3 | 1 1/4 |
| RE85-TB | 3 | 1 1/2 |
| RE86-TB | 3 | 2 |
| RE87-TB | 3 | 2 1/2 |
| RE96-TB | 3 1/2 | 2 |
| RE97-TB | 3 1/2 | 2 1/2 |
| RE98-TB | 3 1/2 | 3 |
| RE106-TB | 4 | 2 |
| RE107-TB | 4 | 2 1/2 |
| RE108-TB | 4 | 3 |

REC Series Reducers



| CAT. NO. | A (NPT) | B (NPT) | C |
|---|---------|----------|-------|
| <i>Funnel-Shaped Reducers for Hazardous and Non-Hazardous Locations</i> | | | |
| REC21-TB | 3/4 | 1/2 - 14 | 1 1/8 |
| REC31-TB | 1 | 1/2 - 14 | 2 |
| REC32-TB | 1 | 3/4 - 14 | 2 |

Aluminum Recessed Plugs



| CAT. NO. | HUB SIZE |
|--|----------|
| <i>With Flush Head for Hazardous and Non-Hazardous Locations</i> | |
| XPLG-1† | 1/2" |
| XPLG-2† | 3/4" |
| XPLG-3† | 1" |
| XPLG-4* | 1 1/4" |
| XPLG-5* | 1 1/2" |
| XPLG-6* | 2" |

Made-to-order items. Consult factory for lead time and minimum quantities.

† Not UL Listed and not approved for use in hazardous locations.

* UL Listed E 34438