

# S200 Series Miniature Circuit Breakers



**S200**  
UL 1077 Series



### Description

The S200 Series miniature circuit breaker offers a compact solution for protection requirements. The S200 devices are UL tested current limiting and DIN rail mounted. The S200 is available with application-specific trip characteristics to provide maximum circuit protection. The breakers offer thermal-magnetic trip protection according to B, C, D, K and Z characteristics.

For the worldwide market, the breakers carry UL, CSA, IEC, CE and many other agency approvals and certifications.

### Features

- Current limiting
- Fast breaking time (2.3 – 2.5 ms)
- Bus connection system
- Wide range of accessories
- Available with variable depth handle mechanism
- CE certified and marked
- DIN rail mounting
- Finger safe terminals
- Multi-function terminals
- Suitable for reverse feed
- UL1077 Listed-supplemental protective device. UL file # E76126

|                             | S200   | S200P                            | S280UC                         | S290                           |
|-----------------------------|--|----------------------------------|--------------------------------|--------------------------------|
| <b>Amperage</b>             | 0.5 – 63 A   | 0.2 – 63 A                       | 0.2 – 63 A                     | 80 - 125 A                     |
| <b>Voltage</b>              | 480Y/277 VAC   | 480Y/277 VAC                     | 500 VDC                        | 480Y/277 VAC                   |
| <b>Poles</b>                | 1, 2, 3, 4   | 1, 2, 3, 4                       | 1, 2, 3                        | 1, 2, 3, 4                     |
| <b>Trip characteristics</b> | B, C, D, K   | K, Z                             | K, Z                           | C                              |
| <b>Interrupting ratings</b> | 6 kA: IEC 60898<br>6 kA: UL 1077<br>6 kA: CSA C22.2 #235 | 10kA: IEC 947-2<br>10kA: UL 1077 | 10kA: IEC 947<br>10kA: UL 1077 | 6 kA: IEC 898<br>6 kA: UL 1077 |
| <b>Auxiliary contacts</b>   | Yes  | Yes                              | Yes                            | Yes                            |
| <b>Bell alarm</b>           | Yes  | Yes                              | Yes                            | Yes                            |
| <b>Shunt trip</b>           | Yes  | Yes                              | Yes                            | Yes                            |
| <b>Undervoltage release</b> | Yes  | Yes                              | Yes                            | No                             |
| <b>Bus bar</b>              | Yes  | Yes                              | Yes                            | No                             |

# S200-B, 480Y/277 VAC

## Supplemental protectors

### UL 1077, CSA 22.2

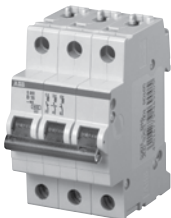
# B



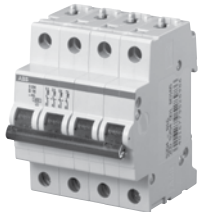
S201-B



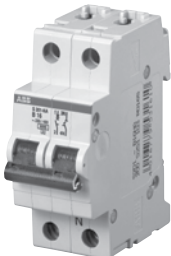
S202-B



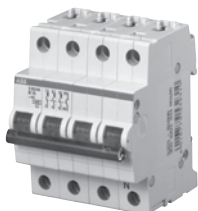
S203-B



S204-B



S201-BNA



S203-BNA

| No. of poles | Rated current | Catalog number | No. of poles | Rated current | Catalog number |
|--------------|---------------|----------------|--------------|---------------|----------------|
| 1            | 6             | S201-B6        | 3            | 6             | S203-B6        |
|              | 10            | S201-B10       |              | 10            | S203-B10       |
|              | 13            | S201-B13       |              | 13            | S203-B13       |
|              | 16            | S201-B16       |              | 16            | S203-B16       |
|              | 20            | S201-B20       |              | 20            | S203-B20       |
|              | 25            | S201-B25       |              | 25            | S203-B25       |
|              | 32            | S201-B32       |              | 32            | S203-B32       |
|              | 40            | S201-B40       |              | 40            | S203-B40       |
|              | 50            | S201-B50       |              | 50            | S203-B50       |
|              | 63            | S201-B63       |              | 63            | S203-B63       |
| 1 + NA       | 6             | S201-B6NA      | 3 + NA       | 6             | S203-B6NA      |
|              | 10            | S201-B10NA     |              | 10            | S203-B10NA     |
|              | 13            | S201-B13NA     |              | 13            | S203-B13NA     |
|              | 16            | S201-B16NA     |              | 16            | S203-B16NA     |
|              | 20            | S201-B20NA     |              | 20            | S203-B20NA     |
|              | 25            | S201-B25NA     |              | 25            | S203-B25NA     |
|              | 32            | S201-B32NA     |              | 32            | S203-B32NA     |
|              | 40            | S201-B40NA     |              | 40            | S203-B40NA     |
|              | 50            | S201-B50NA     |              | 50            | S203-B50NA     |
|              | 63            | S201-B63NA     |              | 63            | S203-B63NA     |
| 2            | 6             | S202-B6        | 4            | 6             | S204-B6        |
|              | 10            | S202-B10       |              | 10            | S204-B10       |
|              | 13            | S202-B13       |              | 13            | S204-B13       |
|              | 16            | S202-B16       |              | 16            | S204-B16       |
|              | 20            | S202-B20       |              | 20            | S204-B20       |
|              | 25            | S202-B25       |              | 25            | S204-B25       |
|              | 32            | S202-B32       |              | 32            | S204-B32       |
|              | 40            | S202-B40       |              | 40            | S204-B40       |
|              | 50            | S202-B50       |              | 50            | S204-B50       |
|              | 63            | S202-B63       |              | 63            | S204-B63       |

### Tripping characteristic B

UL 1077  
480Y/277VAC  
6 kA

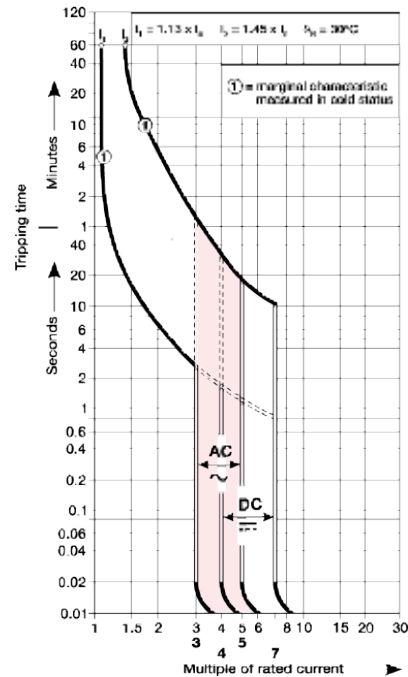
### Resistive loads

- B Curve
- Designed for use in cable protection applications
- Example: control circuits, lighting

### Accessories & technical data

Accessories – See page 15.26

Technical data – See page 15.76 - 15.82



Note: This breaker for AC use only. Switching neutral is noted by "NA" in the catalog number.

# S200-C, 480Y/277 VAC

## Supplemental protectors

### UL 1077, CSA 22.2

Miniature  
circuit breakers

# C



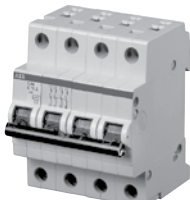
S201-C



S202-C



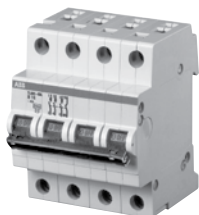
S203-C



S204-C



S201-CNA



S203-CNA

| No. of poles | Rated current | Catalog number | No. of poles | Rated current | Catalog number |
|--------------|---------------|----------------|--------------|---------------|----------------|
| 1            | 0.5           | S201-C0.5      | 3            | 0.5           | S203-C0.5      |
|              | 1             | S201-C1        |              | 1             | S203-C1        |
|              | 1.6           | S201-C1.6      |              | 1.6           | S203-C1.6      |
|              | 2             | S201-C2        |              | 2             | S203-C2        |
|              | 3             | S201-C3        |              | 3             | S203-C3        |
|              | 4             | S201-C4        |              | 4             | S203-C4        |
|              | 6             | S201-C6        |              | 6             | S203-C6        |
|              | 8             | S201-C8        |              | 8             | S203-C8        |
|              | 10            | S201-C10       |              | 10            | S203-C10       |
|              | 13            | S201-C13       |              | 13            | S203-C13       |
|              | 16            | S201-C16       |              | 16            | S203-C16       |
|              | 20            | S201-C20       |              | 20            | S203-C20       |
|              | 25            | S201-C25       |              | 25            | S203-C25       |
|              | 32            | S201-C32       |              | 32            | S203-C32       |
|              | 40            | S201-C40       |              | 40            | S203-C40       |
| 50           | S201-C50      | 50             | S203-C50     |               |                |
| 63           | S201-C63      | 63             | S203-C63     |               |                |
| 1 + NA       | 0.5           | S201-C0.5NA    | 3 + NA       | 0.5           | S203-C0.5NA    |
|              | 1             | S201-C1NA      |              | 1             | S203-C1NA      |
|              | 1.6           | S201-C1.6NA    |              | 1.6           | S203-C1.6NA    |
|              | 2             | S201-C2NA      |              | 2             | S203-C2NA      |
|              | 3             | S201-C3NA      |              | 3             | S203-C3NA      |
|              | 4             | S201-C4NA      |              | 4             | S203-C4NA      |
|              | 6             | S201-C6NA      |              | 6             | S203-C6NA      |
|              | 8             | S201-C8NA      |              | 8             | S203-C8NA      |
|              | 10            | S201-C10NA     |              | 10            | S203-C10NA     |
|              | 13            | S201-C13NA     |              | 13            | S203-C13NA     |
|              | 16            | S201-C16NA     |              | 16            | S203-C16NA     |
|              | 20            | S201-C20NA     |              | 20            | S203-C20NA     |
|              | 25            | S201-C25NA     |              | 25            | S203-C25NA     |
|              | 32            | S201-C32NA     |              | 32            | S203-C32NA     |
|              | 40            | S201-C40NA     |              | 40            | S203-C40NA     |
| 50           | S201-C50NA    | 50             | S203-C50NA   |               |                |
| 63           | S201-C63NA    | 63             | S203-C63NA   |               |                |
| 2            | 0.5           | S202-C0.5      | 4            | 0.5           | S204-C0.5      |
|              | 1             | S202-C1        |              | 1             | S204-C1        |
|              | 1.6           | S202-C1.6      |              | 1.6           | S204-C1.6      |
|              | 2             | S202-C2        |              | 2             | S204-C2        |
|              | 3             | S202-C3        |              | 3             | S204-C3        |
|              | 4             | S202-C4        |              | 4             | S204-C4        |
|              | 6             | S202-C6        |              | 6             | S204-C6        |
|              | 8             | S202-C8        |              | 8             | S204-C8        |
|              | 10            | S202-C10       |              | 10            | S204-C10       |
|              | 13            | S202-C13       |              | 13            | S204-C13       |
|              | 16            | S202-C16       |              | 16            | S204-C16       |
|              | 20            | S202-C20       |              | 20            | S204-C20       |
|              | 25            | S202-C25       |              | 25            | S204-C25       |
|              | 32            | S202-C32       |              | 32            | S204-C32       |
|              | 40            | S202-C40       |              | 40            | S204-C40       |
| 50           | S202-C50      | 50             | S204-C50     |               |                |
| 63           | S202-C63      | 63             | S204-C63     |               |                |

### Tripping characteristic C

UL 1077  
480Y/277 VAC  
6 kA

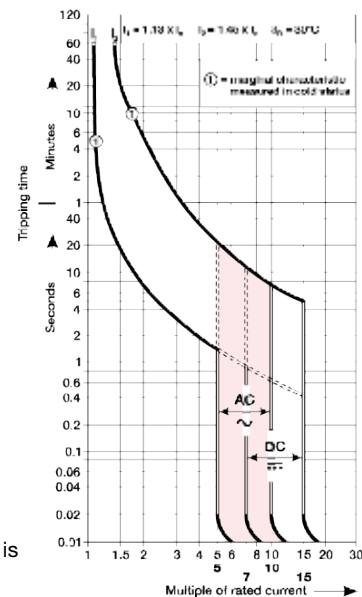
#### Resistive loads

- C Curve
- Designed for use with medium magnetic start up currents
- Example: lighting, control panels

#### Accessories & technical data

Accessories – See page 15.26

Technical data – See page 15.76 - 15.82



Note: This breaker for AC use only. Switching neutral is noted by "NA" in the catalog number.

# S200-D, 480Y/277 VAC

## Supplemental protectors

### UL 1077, CSA 22.2

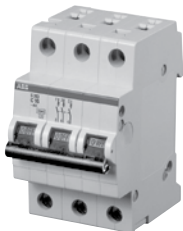
# D



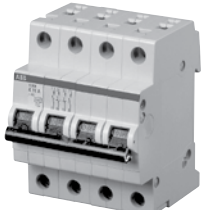
S201-D



S202-D



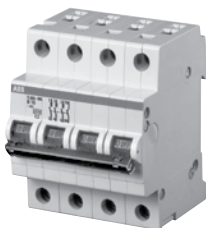
S203-D



S204-D



S201-DNA



S203-DNA

| No. of poles | Rated current | Catalog number | No. of poles | Rated current   | Catalog number |
|--------------|---------------|----------------|--------------|-----------------|----------------|
| 1            | 0.5           | S201-D0.5      | 3            | 0.5             | S203-D0.5      |
|              | 1             | S201-D1        |              | 1               | S203-D1        |
|              | 1.6           | S201-D1.6      |              | 1.6             | S203-D1.6      |
|              | 2             | S201-D2        |              | 2               | S203-D2        |
|              | 3             | S201-D3        |              | 3               | S203-D3        |
|              | 4             | S201-D4        |              | 4               | S203-D4        |
|              | 6             | S201-D6        |              | 6               | S203-D6        |
|              | 8             | S201-D8        |              | 8               | S203-D8        |
|              | 10            | S201-D10       |              | 10              | S203-D10       |
|              | 13            | S201-D13       |              | 13              | S203-D13       |
|              | 16            | S201-D16       |              | 16              | S203-D16       |
|              | 20            | S201-D20       |              | 20              | S203-D20       |
|              | 25            | S201-D25       |              | 25              | S203-D25       |
|              | 32            | S201-D32       |              | 32              | S203-D32       |
|              | 40            | S201-D40       |              | 40              | S203-D40       |
| 50           | S201-D50      | 50             | S203-D50     |                 |                |
| 63           | S201-D63      | 63             | S203-D63     |                 |                |
| 1 + NA       | 0.5           | S201-D0.5NA    | 3 + NA       | 0.5             | S203-D0.5NA    |
|              | 1             | S201-D1NA      |              | 1               | S203-D1NA      |
|              | 1.6           | S201-D1.6NA    |              | 1.6             | S203-D1.6NA    |
|              | 2             | S201-D2NA      |              | 2               | S203-D2NA      |
|              | 3             | S201-D3NA      |              | 3               | S203-D3NA      |
|              | 4             | S201-D4NA      |              | 4               | S203-D4NA      |
|              | 6             | S201-D6NA      |              | 6               | S203-D6NA      |
|              | 8             | S201-D8NA      |              | 8               | S203-D8NA      |
|              | 10            | S201-D10NA     |              | 10              | S203-D10NA     |
|              | 13            | S201-D13NA     |              | 13              | S203-D13NA     |
|              | 16            | S201-D16NA     |              | 16              | S203-D16NA     |
|              | 20            | S201-D20NA     |              | 20              | S203-D20NA     |
|              | 25            | S201-D25NA     |              | 25              | S203-D25NA     |
|              | 32            | S201-D32NA     |              | 32              | S203-D32NA     |
|              | 40            | S201-D40NA     |              | 40              | S203-D40NA     |
| 50           | S201-D50NA    | 50             | S203-D50NA   |                 |                |
| 63           | S201-D63NA    | 63             | S203-D63NA   |                 |                |
| 2            | 0.5           | S202-D0.5      | 4            | 0.5             | S204-D0.5      |
|              | 1             | S202-D1        |              | 1               | S204-D1        |
|              | 1.6           | S202-D1.6      |              | 1.6             | S204-D1.6      |
|              | 2             | S202-D2        |              | 2               | S204-D2        |
|              | 3             | S202-D3        |              | 3               | S204-D3        |
|              | 4             | S202-D4        |              | 4               | S204-D4        |
|              | 6             | S202-D6        |              | 6               | S204-D6        |
|              | 8             | S202-D8        |              | 8               | S204-D8        |
|              | 10            | S202-D10       |              | 10              | S204-D10       |
|              | 13            | S202-D13       |              | 13              | S204-D13       |
|              | 16            | S202-D16       |              | 16              | S204-D16       |
|              | 20            | S202-D20       |              | 20              | S204-D20       |
|              | 25            | S202-D25       |              | 25              | S204-D25       |
|              | 32            | S202-D32       |              | 32 <td S204-D32 |                |
|              | 40            | S202-D40       |              | 40              | S204-D40       |
| 50           | S202-D50      | 50             | S204-D50     |                 |                |
| 63           | S202-D63      | 63             | S204-D63     |                 |                |

### Tripping characteristic D

UL 1077  
480Y/277 VAC  
6 kA

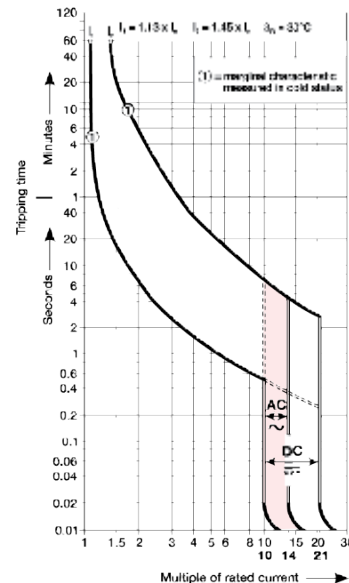
#### Inductive loads

- D Curve
- Designed for allowing higher in-rush currents during system start up
- Example: motors, transformers

#### Accessories & technical data

Accessories – See page 15.26

Technical data – See page 15.76 - 15.82



Note: This breaker for AC use only

# S200-K, 480Y/277 VAC

## Supplemental protectors

### UL 1077, CSA 22.2

Miniature  
circuit breakers

# K



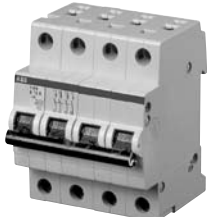
S201-K



S202-K



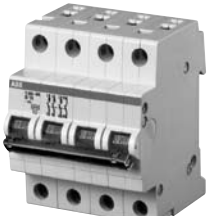
S203-K



S204-K



S201-KNA



S203-KNA

| No. of poles | Rated current | Catalog number | No. of poles | Rated current | Catalog number |
|--------------|---------------|----------------|--------------|---------------|----------------|
| 1            | 0.5           | S201-K0.5      | 3            | 0.5           | S203-K0.5      |
|              | 1             | S201-K1        |              | 1             | S203-K1        |
|              | 1.6           | S201-K1.6      |              | 1.6           | S203-K1.6      |
|              | 2             | S201-K2        |              | 2             | S203-K2        |
|              | 3             | S201-K3        |              | 3             | S203-K3        |
|              | 4             | S201-K4        |              | 4             | S203-K4        |
|              | 6             | S201-K6        |              | 6             | S203-K6        |
|              | 8             | S201-K8        |              | 8             | S203-K8        |
|              | 10            | S201-K10       |              | 10            | S203-K10       |
|              | 13            | S201-K13       |              | 13            | S203-K13       |
|              | 16            | S201-K16       |              | 16            | S203-K16       |
|              | 20            | S201-K20       |              | 20            | S203-K20       |
|              | 25            | S201-K25       |              | 25            | S203-K25       |
|              | 32            | S201-K32       |              | 32            | S203-K32       |
|              | 40            | S201-K40       |              | 40            | S203-K40       |
| 50           | S201-K50      | 50             | S203-K50     |               |                |
| 63           | S201-K63      | 63             | S203-K63     |               |                |
| 1 + NA       | 0.5           | S201-K0.5NA    | 3 + NA       | 0.5           | S203-K0.5NA    |
|              | 1             | S201-K1NA      |              | 1             | S203-K1NA      |
|              | 1.6           | S201-K1.6NA    |              | 1.6           | S203-K1.6NA    |
|              | 2             | S201-K2NA      |              | 2             | S203-K2NA      |
|              | 3             | S201-K3NA      |              | 3             | S203-K3NA      |
|              | 4             | S201-K4NA      |              | 4             | S203-K4NA      |
|              | 6             | S201-K6NA      |              | 6             | S203-K6NA      |
|              | 8             | S201-K8NA      |              | 8             | S203-K8NA      |
|              | 10            | S201-K10NA     |              | 10            | S203-K10NA     |
|              | 13            | S201-K13NA     |              | 13            | S203-K13NA     |
|              | 16            | S201-K16NA     |              | 16            | S203-K16NA     |
|              | 20            | S201-K20NA     |              | 20            | S203-K20NA     |
|              | 25            | S201-K25NA     |              | 25            | S203-K25NA     |
|              | 32            | S201-K32NA     |              | 32            | S203-K32NA     |
|              | 40            | S201-K40NA     |              | 40            | S203-K40NA     |
| 50           | S201-K50NA    | 50             | S203-K50NA   |               |                |
| 63           | S201-K63NA    | 63             | S203-K63NA   |               |                |
| 2            | 0.5           | S202-K0.5      | 4            | 0.5           | S204-K0.5      |
|              | 1             | S202-K1        |              | 1             | S204-K1        |
|              | 1.6           | S202-K1.6      |              | 1.6           | S204-K1.6      |
|              | 2             | S202-K2        |              | 2             | S204-K2        |
|              | 3             | S202-K3        |              | 3             | S204-K3        |
|              | 4             | S202-K4        |              | 4             | S204-K4        |
|              | 6             | S202-K6        |              | 6             | S204-K6        |
|              | 8             | S202-K8        |              | 8             | S204-K8        |
|              | 10            | S202-K10       |              | 10            | S204-K10       |
|              | 13            | S202-K13       |              | 13            | S204-K13       |
|              | 16            | S202-K16       |              | 16            | S204-K16       |
|              | 20            | S202-K20       |              | 20            | S204-K20       |
|              | 25            | S202-K25       |              | 25            | S204-K25       |
|              | 32            | S202-K32       |              | 32            | S204-K32       |
|              | 40            | S202-K40       |              | 40            | S204-K40       |
| 50           | S202-K50      | 50             | S204-K50     |               |                |
| 63           | S202-K63      | 63             | S204-K63     |               |                |

### Tripping characteristic K

UL 1077

480Y/277 VAC

6 kA

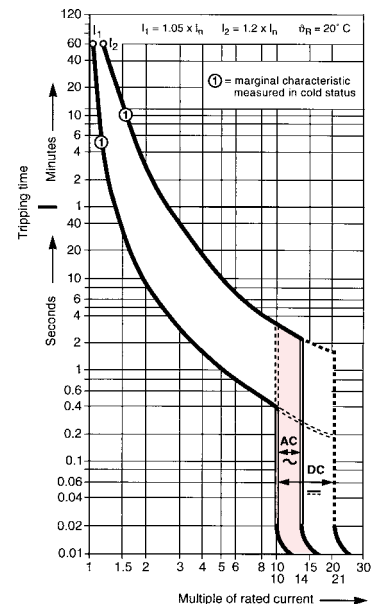
### Inductive loads

- K Curve
- Designed for allowing higher in-rush currents during system start up
- Example: motors, transformers

### Accessories & technical data

Accessories – See page 15.26

Technical data – See page 15.76 - 15.82



Note: This breaker for AC use only

## S200P-K, 480Y/277 VAC Supplemental protectors UL 1077, CSA 22.2

# K



S201P-K



S202P-K



S203P-K

| No. of poles | Rated current | Catalog number | No. of poles | Rated current | Catalog number |
|--------------|---------------|----------------|--------------|---------------|----------------|
| 1            | 0.2           | S201P-K0.2     | 3            | 0.2           | S203P-K0.2     |
|              | 0.3           | S201P-K0.3     |              | 0.3           | S203P-K0.3     |
|              | 0.5           | S201P-K0.5     |              | 0.5           | S203P-K0.5     |
|              | 0.75          | S201P-K0.75    |              | 0.75          | S203P-K0.75    |
|              | 1             | S201P-K1       |              | 1             | S203P-K1       |
|              | 1.6           | S201P-K1.6     |              | 1,6           | S203P-K1,6     |
|              | 2             | S201P-K2       |              | 2             | S203P-K2       |
|              | 3             | S201P-K3       |              | 3             | S203P-K3       |
|              | 4             | S201P-K4       |              | 4             | S203P-K4       |
|              | 6             | S201P-K6       |              | 6             | S203P-K6       |
|              | 8             | S201P-K8       |              | 8             | S203P-K8       |
|              | 10            | S201P-K10      |              | 10            | S203P-K10      |
|              | 13            | S201P-K13      |              | 13            | S203P-K13      |
|              | 16            | S201P-K16      |              | 16            | S203P-K16      |
|              | 20            | S201P-K20      |              | 20            | S203P-K20      |
| 25           | S201P-K25     | 25             | S203P-K25    |               |                |
| 32           | S201P-K32     | 32             | S203P-K32    |               |                |
| 40           | S201P-K40     | 40             | S203P-K40    |               |                |
| 50           | S201P-K50     | 50             | S203P-K50    |               |                |
| 63           | S201P-K63     | 63             | S203P-K63    |               |                |
| 2            | 0.2           | S202P-K0.2     |              |               |                |
|              | 0.3           | S202P-K0.3     |              |               |                |
|              | 0.5           | S202P-K0.5     |              |               |                |
|              | 0.75          | S202P-K0.75    |              |               |                |
|              | 1             | S202P-K1       |              |               |                |
|              | 1.6           | S202P-K1,6     |              |               |                |
|              | 2             | S202P-K2       |              |               |                |
|              | 3             | S202P-K3       |              |               |                |
|              | 4             | S202P-K4       |              |               |                |
|              | 6             | S202P-K6       |              |               |                |
|              | 8             | S202P-K8       |              |               |                |
|              | 10            | S202P-K10      |              |               |                |
|              | 13            | S202P-K13      |              |               |                |
|              | 16            | S202P-K16      |              |               |                |
|              | 20            | S202P-K20      |              |               |                |
| 25           | S202P-K25     |                |              |               |                |
| 32           | S202P-K32     |                |              |               |                |
| 40           | S202P-K40     |                |              |               |                |
| 50           | S202P-K50     |                |              |               |                |
| 63           | S202P-K63     |                |              |               |                |

### Tripping characteristic K

UL 1077  
480Y/277 VAC  
10 kA

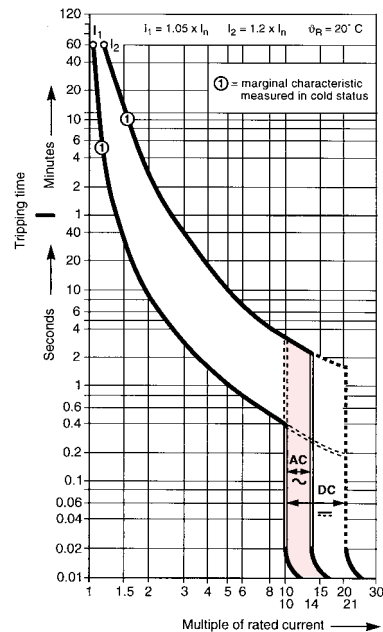
#### Inductive loads

- K Curve
- Designed for allowing higher in-rush currents during system start up
- Example: motors, transformers

#### Accessories & technical data

Accessories – See page 15.26

Technical data – See page 15.76 - 15.82



Note: This breaker for AC use only



# S200P-Z, 480Y/277 VAC

## Supplemental protectors

### UL 1077, CSA 22.2

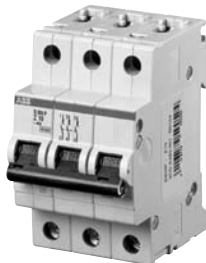
# Z



S201P-Z



S202P-Z



S203P-Z

| No. of poles | Rated current | Catalog number | No. of poles | Rated current | Catalog number |
|--------------|---------------|----------------|--------------|---------------|----------------|
| 1            | 0.5           | S201P-Z0.5     | 3            | 0.5           | S203P-Z0.5     |
|              | 1             | S201P-Z1       |              | 1             | S203P-Z1       |
|              | 1.6           | S201P-Z1.6     |              | 1.6           | S203P-Z1.6     |
|              | 2             | S201P-Z2       |              | 2             | S203P-Z2       |
|              | 3             | S201P-Z3       |              | 3             | S203P-Z3       |
|              | 4             | S201P-Z4       |              | 4             | S203P-Z4       |
|              | 6             | S201P-Z6       |              | 6             | S203P-Z6       |
|              | 8             | S201P-Z8       |              | 8             | S203P-Z8       |
|              | 10            | S201P-Z10      |              | 10            | S203P-Z10      |
|              | 16            | S201P-Z16      |              | 16            | S203P-Z16      |
|              | 20            | S201P-Z20      |              | 20            | S203P-Z20      |
|              | 25            | S201P-Z25      |              | 25            | S203P-Z25      |
|              | 32            | S201P-Z32      |              | 32            | S203P-Z32      |
| 40           | S201P-Z40     | 40             | S203P-Z40    |               |                |
| 50           | S201P-Z50     | 50             | S203P-Z50    |               |                |
| 63           | S201P-Z63     | 63             | S203P-Z63    |               |                |
| 2            | 0.5           | S202P-Z0.5     |              |               |                |
|              | 1             | S202P-Z1       |              |               |                |
|              | 1.6           | S202P-Z1.6     |              |               |                |
|              | 2             | S202P-Z2       |              |               |                |
|              | 3             | S202P-Z3       |              |               |                |
|              | 4             | S202P-Z4       |              |               |                |
|              | 6             | S202P-Z6       |              |               |                |
|              | 8             | S202P-Z8       |              |               |                |
|              | 10            | S202P-Z10      |              |               |                |
|              | 16            | S202P-Z16      |              |               |                |
|              | 20            | S202P-Z20      |              |               |                |
|              | 25            | S202P-Z25      |              |               |                |
|              | 32            | S202P-Z32      |              |               |                |
| 40           | S202P-Z40     |                |              |               |                |
| 50           | S202P-Z50     |                |              |               |                |
| 63           | S202P-Z63     |                |              |               |                |

### Tripping characteristic Z

UL 1077  
480Y/277 VAC  
10 kA

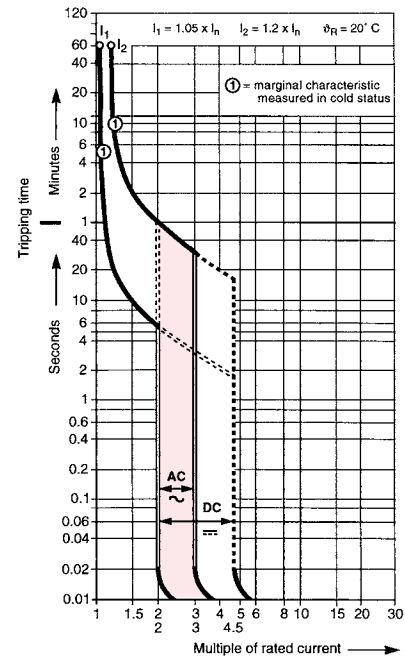
#### Resistive loads

- Z Curve
- Designed to provide maximum protection with a very low short circuit trip setting
- Example: semiconductors

#### Accessories & technical data

Accessories – See page 15.26

Technical data – See page 15.76 - 15.82



Note: This breaker for AC use only

# S280W-K 480Y/277 VAC

Supplemental protectors, ring tongue  
UL 1077, CSA 22.2

# K



S281-KW



S282-KW

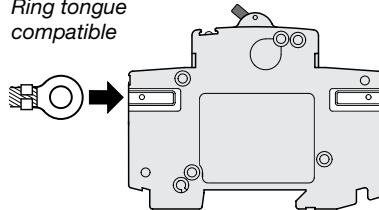


S283-KW

| No. of poles | Rated current | Catalog number | No. of poles | Rated current | Catalog number |
|--------------|---------------|----------------|--------------|---------------|----------------|
| 1            | 0.2           | S281-K0.2W     | 3            | 0.2           | S283-K0.2W     |
|              | 0.3           | S281-K0.3W     |              | 0.3           | S283-K0.3W     |
|              | 0.5           | S281-K0.5W     |              | 0.5           | S283-K0.5W     |
|              | 0.75          | S281-K0.75W    |              | 0.75          | S283-K0.75W    |
|              | 1             | S281-K1W       |              | 1             | S283-K1W       |
|              | 1.6           | S281-K1.6W     |              | 1,6           | S283-K1,6W     |
|              | 2             | S281-K2W       |              | 2             | S283-K2W       |
|              | 3             | S281-K3W       |              | 3             | S283-K3W       |
|              | 4             | S281-K4W       |              | 4             | S283-K4W       |
|              | 6             | S281-K6W       |              | 6             | S283-K6W       |
|              | 8             | S281-K8W       |              | 8             | S283-K8W       |
|              | 10            | S281-K10W      |              | 10            | S283-K10W      |
|              | 13            | S281-K13W      |              | 13            | S283-K13W      |
|              | 16            | S281-K16W      |              | 16            | S283-K16W      |
|              | 20            | S281-K20W      |              | 20            | S283-K20W      |
| 25           | S281-K25W     | 25             | S283-K25W    |               |                |
| 32           | S281-K32W     | 32             | S283-K32W    |               |                |
| 40           | S281-K40W     | 40             | S283-K40W    |               |                |
| 50           | S281-K50W     | 50             | S283-K50W    |               |                |
| 63           | S281-K63W     | 63             | S283-K63W    |               |                |
| 2            | 0.2           | S282-K0.2W     |              |               |                |
|              | 0.3           | S282-K0.3W     |              |               |                |
|              | 0.5           | S282-K0.5W     |              |               |                |
|              | 0.75          | S282-K0.75W    |              |               |                |
|              | 1             | S282-K1W       |              |               |                |
|              | 1.6           | S282-K1,6W     |              |               |                |
|              | 2             | S282-K2W       |              |               |                |
|              | 3             | S282-K3W       |              |               |                |
|              | 4             | S282-K4W       |              |               |                |
|              | 6             | S282-K6W       |              |               |                |
|              | 8             | S282-K8W       |              |               |                |
|              | 10            | S282-K10W      |              |               |                |
|              | 13            | S282-K13W      |              |               |                |
|              | 16            | S282-K16W      |              |               |                |
|              | 20            | S282-K20W      |              |               |                |
| 25           | S282-K25W     |                |              |               |                |
| 32           | S282-K32W     |                |              |               |                |
| 40           | S282-K40W     |                |              |               |                |
| 50           | S282-K50W     |                |              |               |                |
| 63           | S282-K63W     |                |              |               |                |

### Tripping characteristic K

Ring tongue  
compatible



UL 1077  
480Y/277 VAC  
10 kA

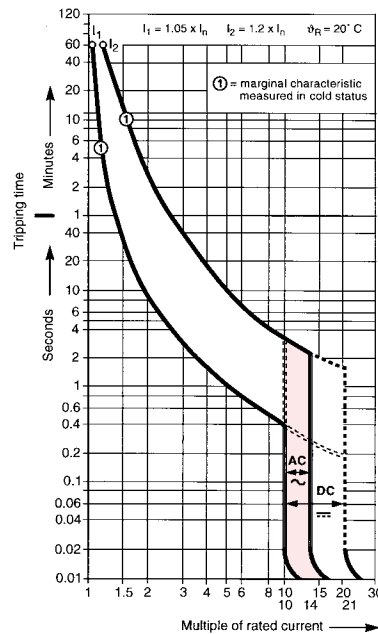
#### Inductive loads

- K Curve
- Designed for allowing higher in-rush currents during system start up
- Example: motors, transformers

#### Accessories & technical data

Accessories – See page 15.26

Technical data – See page 15.76 - 15.82



Note: This breaker for AC use only



# S280UC-K, 500 VDC

## Supplemental protectors

### UL 1077, CSA 22.2

# K



S281UC-K



S282UC-K



S283UC-K

| No. of poles | Rated current | Catalog number | No. of poles | Rated current | Catalog number |
|--------------|---------------|----------------|--------------|---------------|----------------|
| 1            | 0,2           | S281UC-K0,2    | 3            | 0,2           | S283UC-K0.2    |
|              | 0,3           | S281UC-K0,3    |              | 0,3           | S283UC-K0.3    |
|              | 0,5           | S281UC-K0,5    |              | 0,5           | S283UC-K0.5    |
|              | 0,75          | S281UC-K0,75   |              | 0,75          | S283UC-K0.75   |
|              | 1             | S281UC-K1      |              | 1             | S283UC-K1      |
|              | 1,6           | S281UC-K1,6    |              | 1,6           | S283UC-K1.6    |
|              | 2             | S281UC-K2      |              | 2             | S283UC-K2      |
|              | 3             | S281UC-K3      |              | 3             | S283UC-K3      |
|              | 4             | S281UC-K4      |              | 4             | S283UC-K4      |
|              | 6             | S281UC-K6      |              | 6             | S283UC-K6      |
|              | 8             | S281UC-K8      |              | 8             | S283UC-K8      |
|              | 10            | S281UC-K10     |              | 10            | S283UC-K10     |
|              | 16            | S281UC-K16     |              | 16            | S283UC-K16     |
|              | 20            | S281UC-K20     |              | 20            | S283UC-K20     |
| 2            | 0,2           | S282UC-K0,2    | 3            | 0,2           | S283UC-K0.2    |
|              | 0,3           | S282UC-K0,3    |              | 0,3           | S283UC-K0.3    |
|              | 0,5           | S282UC-K0,5    |              | 0,5           | S283UC-K0.5    |
|              | 0,75          | S282UC-K0,75   |              | 0,75          | S283UC-K0.75   |
|              | 1             | S282UC-K1      |              | 1             | S283UC-K1      |
|              | 1,6           | S282UC-K1,6    |              | 1,6           | S283UC-K1.6    |
|              | 2             | S282UC-K2      |              | 2             | S283UC-K2      |
|              | 3             | S282UC-K3      |              | 3             | S283UC-K3      |
|              | 4             | S282UC-K4      |              | 4             | S283UC-K4      |
|              | 6             | S282UC-K6      |              | 6             | S283UC-K6      |
|              | 8             | S282UC-K8      |              | 8             | S283UC-K8      |
|              | 10            | S282UC-K10     |              | 10            | S283UC-K10     |
|              | 16            | S282UC-K16     |              | 16            | S283UC-K16     |
|              | 20            | S282UC-K20     |              | 20            | S283UC-K20     |
| 3            | 0,2           | S283UC-K0,2    | 3            | 0,2           | S283UC-K0.2    |
|              | 0,3           | S283UC-K0,3    |              | 0,3           | S283UC-K0.3    |
|              | 0,5           | S283UC-K0,5    |              | 0,5           | S283UC-K0.5    |
|              | 0,75          | S283UC-K0,75   |              | 0,75          | S283UC-K0.75   |
|              | 1             | S283UC-K1      |              | 1             | S283UC-K1      |
|              | 1,6           | S283UC-K1,6    |              | 1,6           | S283UC-K1.6    |
|              | 2             | S283UC-K2      |              | 2             | S283UC-K2      |
|              | 3             | S283UC-K3      |              | 3             | S283UC-K3      |
|              | 4             | S283UC-K4      |              | 4             | S283UC-K4      |
|              | 6             | S283UC-K6      |              | 6             | S283UC-K6      |
|              | 8             | S283UC-K8      |              | 8             | S283UC-K8      |
|              | 10            | S283UC-K10     |              | 10            | S283UC-K10     |
|              | 16            | S283UC-K16     |              | 16            | S283UC-K16     |
|              | 20            | S283UC-K20     |              | 20            | S283UC-K20     |

### Tripping characteristic K

UL 1077  
500 VDC  
10 kA

#### Inductive loads

- K Curve
- Designed for allowing higher in-rush currents during system start up
- Example: motors, transformer

#### Direct current applications

The S280UC differs from standard miniature circuit breakers in that the UC versions include a permanent magnet which aids in the extinguishing of the arc during medium and high level faults. It is necessary to observe the correct polarity and current direction when connecting the UC breakers. Two examples of correct connection are shown.

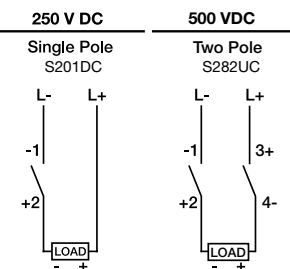
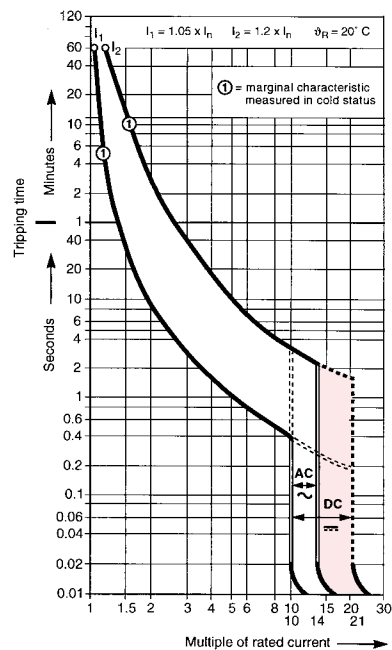
Termination points are marked on all UC type MCBs, points one (1) and four (4) are negative and points two (2) and three (3) are positive.

Note: This breaker for DC use only

#### Accessories & technical data

Accessories – See page 15.26

Technical data – See page 15.76 - 15.82



# S280UC-Z, 500 VDC

## Supplemental protectors

### UL 1077, CSA 22.2

# Z



S281UC-Z



S282UC-Z



S283UC-Z

| No. of poles | Rated current | Catalog number | No. of poles | Rated current | Catalog number |
|--------------|---------------|----------------|--------------|---------------|----------------|
| 1            | 0.5           | S281UC-Z0.5    | 3            | 0.5           | S283UC-Z0.5    |
|              | 1             | S281UC-Z1      |              | 1             | S283UC-Z1      |
|              | 1.6           | S281UC-Z1.6    |              | 1.6           | S283UC-Z1.6    |
|              | 2             | S281UC-Z2      |              | 2             | S283UC-Z2      |
|              | 3             | S281UC-Z3      |              | 3             | S283UC-Z3      |
|              | 4             | S281UC-Z4      |              | 4             | S283UC-Z4      |
|              | 6             | S281UC-Z6      |              | 6             | S283UC-Z6      |
|              | 8             | S281UC-Z8      |              | 8             | S283UC-Z8      |
|              | 10            | S281UC-Z10     |              | 10            | S283UC-Z10     |
|              | 16            | S281UC-Z16     |              | 16            | S283UC-Z16     |
|              | 20            | S281UC-Z20     |              | 20            | S283UC-Z20     |
|              | 25            | S281UC-Z25     |              | 25            | S283UC-Z25     |
|              | 32            | S281UC-Z32     |              | 32            | S283UC-Z32     |
|              | 40            | S281UC-Z40     |              | 40            | S283UC-Z40     |
| 50           | S281UC-Z50    | 50             | S283UC-Z50   |               |                |
| 63           | S281UC-Z63    | 63             | S283UC-Z63   |               |                |
| 2            | 0.5           | S282UC-Z0.5    | 3            | 0.5           | S283UC-Z0.5    |
|              | 1             | S282UC-Z1      |              | 1             | S283UC-Z1      |
|              | 1.6           | S282UC-Z1.6    |              | 1.6           | S283UC-Z1.6    |
|              | 2             | S282UC-Z2      |              | 2             | S283UC-Z2      |
|              | 3             | S282UC-Z3      |              | 3             | S283UC-Z3      |
|              | 4             | S282UC-Z4      |              | 4             | S283UC-Z4      |
|              | 6             | S282UC-Z6      |              | 6             | S283UC-Z6      |
|              | 8             | S282UC-Z8      |              | 8             | S283UC-Z8      |
|              | 10            | S282UC-Z10     |              | 10            | S283UC-Z10     |
|              | 16            | S282UC-Z16     |              | 16            | S283UC-Z16     |
|              | 20            | S282UC-Z20     |              | 20            | S283UC-Z20     |
|              | 25            | S282UC-Z25     |              | 25            | S283UC-Z25     |
|              | 32            | S282UC-Z32     |              | 32            | S283UC-Z32     |
|              | 40            | S282UC-Z40     |              | 40            | S283UC-Z40     |
| 50           | S282UC-Z50    | 50             | S283UC-Z50   |               |                |
| 63           | S282UC-Z63    | 63             | S283UC-Z63   |               |                |

### Tripping characteristic Z

UL 1077  
500 VDC  
10 kA

#### Resistive loads

- Z Curve
- Designed to provide maximum protection with a very low short circuit trip setting
- Example: semiconductors

#### Accessories

See page 15.26

#### Technical data

See page 15.76 - 15.82

#### Direct current applications

The S280UC differs from standard miniature circuit breakers in that the UC versions include a permanent magnet which aids in the extinguishing of the arc during medium and high level faults. It is necessary to observe the correct polarity and current direction when connecting the UC breakers. Two examples of correct connection are shown.

250 V DC

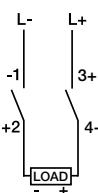
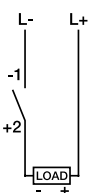
500 VDC

Single Pole

Two Pole

S201DC

S282UC



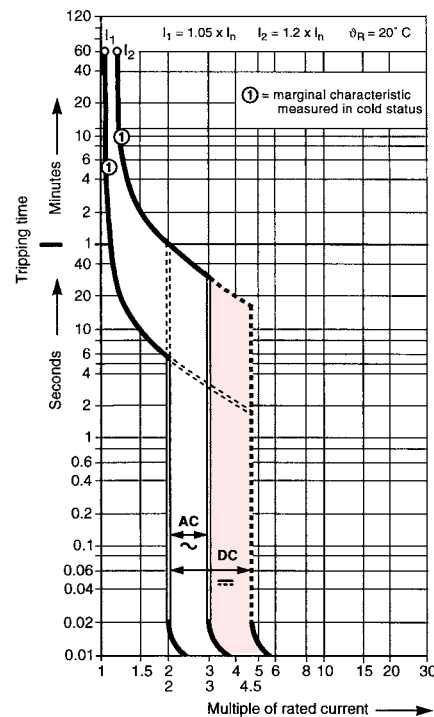
Termination points are marked on all UC type MCBs, points one (1) and four (4) are negative and points two (2) and three (3) are positive.

Note: This breaker for DC use only

#### Accessories & technical data

Accessories - See page 15.26

Technical data - See page 15.76 - 15.82



15

**S290**  
480Y/277 VAC  
UL 1077, CSA 22.2

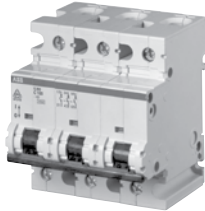
**C**



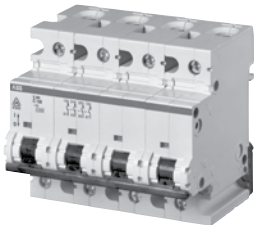
S291-C



S292-C



S293-C



S294-C

| No. of poles | Rated current | Catalog number |
|--------------|---------------|----------------|
| 1            | 80            | S291-C80       |
|              | 100           | S291-C100      |
|              | 125           | S291-C125      |
| 2            | 80            | S292-C80       |
|              | 100           | S292-C100      |
|              | 125           | S292-C125      |
| 3            | 80            | S293-C80       |
|              | 100           | S293-C100      |
|              | 125           | S293-C125      |
| 4            | 80            | S294-C80       |
|              | 100           | S294-C100      |
|              | 125           | S294-C125      |

**Tripping characteristic C**

UL 1077

480Y/277 VAC

6 kA

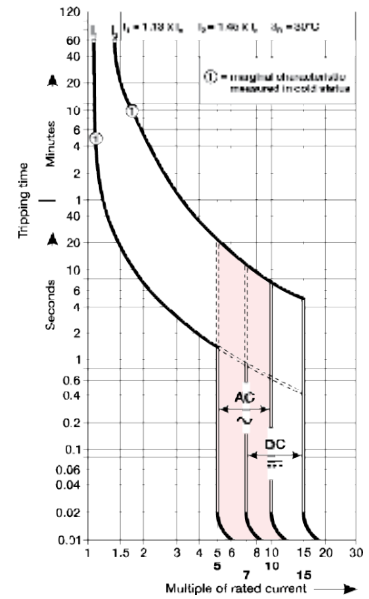
**Resistive loads**

- C Curve
- Designed for use with medium magnetic start up currents
- Example: lighting, control panels

**Accessories & technical data**

**Accessories** – See page 15.27

**Technical data** – See page 15.76 - 15.82



Note: This breaker for AC use only