

Pilot and Signaling Devices

Heavy-Duty 30.5 mm Watertight/Oiltight Push Buttons

CR104P

Key Operated
 600 Volts Maximum AC/DC
 10 Amperes Continuous

Product Number and price do not include nameplate. All nameplates must be ordered as a separate item. Four single-circuit or four double-circuit contact blocks are maximum number that can be assembled to cylinder lock operators.

Suitable for use in NEMA Type 1, 3, 3R, 4, 4X, 12, and 13 applications, when mounted in enclosures rated for those same applications. For some NEMA Type 4X applications, protective caps will provide improved corrosion resistance.

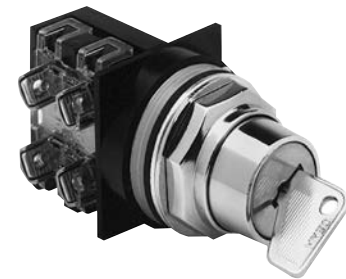
Operator Alone

Position Type	Release Type	Product Number
Lock in Depressed and Free Positions	-	CR104PBK00A1J
Lock Only in Free Position	-	CR104PBK00A1K
Lock Only in Depressed Position	-	CR104PBK00A1L
-	Push-To-Latch, Key Operate To Reset	CR104PBK00A1M

Select contact blocks from page 9-34.

Assembled Operator

Position Type	Release Type	Contact Configuration	Product Number
Lock in Depressed and Free Positions	-	1NO-1NC	CR104PBK91A1J
Lock Only in Free Position	-	1NO-1NC	CR104PBK91A1K
Lock Only in Depressed Position	-	1NO-1NC	CR104PBK91A1L
-	Push-To-Latch, Key Operate To Reset	1NO-1NC	CR104PBK91A1M



Key Operated Push Button

