

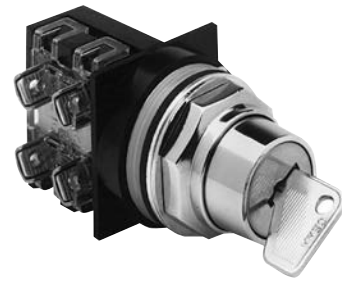
# Pilot and Signaling Devices

## Heavy-Duty 30.5 mm Watertight/Oiltight Selector Switches

## Section 9

### CR104P

Key Operated  
Non-Illuminated  
600 Volts Max. AC/DC  
10 Amperes Continuous



Key Selector Switch

Units are supplied factory-assembled when ordered with contact blocks.

Product Number and price do not include nameplate. All nameplates must be ordered as a separate item. Two keys included with each cylinder lock.

Suitable for use in NEMA Type 1, 3, 3R, 4, 4X, 12, and 13 applications, when mounted in enclosures rated for those same applications. For some NEMA Type 4X applications, protective caps will improve corrosion resistance.

### 3-Position Maintained - Key Operated

Release Type	3 Position Cam Code	Contact Configuration	Key Removal	Product Number
Maintained	4	None	Left	CR104PSK34A00L
Maintained	4	None	Center	CR104PSK34A00C
Maintained	4	None	Right	CR104PSK34A00R
Maintained	4	None	Left, Right, and Center	CR104PSK34A00W
Maintained	4	1NO-1NC	Left	CR104PSK34A91L
Maintained	4	1NO-1NC	Center	CR104PSK34A91C
Maintained	4	1NO-1NC	Right	CR104PSK34A91R
Maintained	4	1NO-1NC	Left, Right, and Center	CR104PSK34A91W
Maintained	4	1NO-1NC	Left	CR104PSK34A91L51 <sup>1</sup>
Maintained	4	1NO-1NC	Center	CR104PSK34A91C51 <sup>1</sup>
Maintained	4	1NO-1NC	Right	CR104PSK34A91R51 <sup>1</sup>
Maintained	4	1NO-1NC	Left, Right, and Center	CR104PSK34A91W51 <sup>1</sup>
Maintained	4	2NO-2NC	Left	CR104PSK34A92L
Maintained	4	2NO-2NC	Center	CR104PSK34A92C
Maintained	4	2NO-2NC	Right	CR104PSK34A92R
Maintained	4	2NO-2NC	Left, Right, and Center	CR104PSK34A92W
Maintained	2	None	Left	CR104PSK32A00L
Maintained	2	None	Center	CR104PSK32A00C
Maintained	2	None	Right	CR104PSK32A00R
Maintained	2	None	Left, Right, and Center	CR104PSK32A00W
Maintained	2	1NO-1NC	Left	CR104PSK32A91L
Maintained	2	1NO-1NC	Center	CR104PSK32A91C
Maintained	2	1NO-1NC	Right	CR104PSK32A91R
Maintained	2	1NO-1NC	Left, Right, and Center	CR104PSK32A91W
Maintained	2	2NO-2NC	Left	CR104PSK32A92L
Maintained	2	2NO-2NC	Center	CR104PSK32A92C
Maintained	2	2NO-2NC	Right	CR104PSK32A92R
Maintained	2	2NO-2NC	Left, Right, and Center	CR104PSK32A92W

<sup>1</sup>CH501 keyed cylinder lock. Other listed cylinder locks are alike and use identical keys. Dissimilar locks are also available; contact nearest GE Representative.

### 3-Position Maintained - Key Operated (continued)

Release Type	3 Position Cam Code	Contact Configuration	Key Removal	Product Number <sup>1</sup>
Maintained	3	None	Left	CR104PSK33A00L
Maintained	3	None	Center	CR104PSK33A00C
Maintained	3	None	Right	CR104PSK33A00R
Maintained	3	None	Left, Right, and Center	CR104PSK33A00W
Maintained	3	1NO-1NC	Left	CR104PSK33A91L
Maintained	3	1NO-1NC	Center	CR104PSK33A91C
Maintained	3	1NO-1NC	Right	CR104PSK33A91R
Maintained	3	1NO-1NC	Left, Right, and Center	CR104PSK33A91W
Maintained	3	2NO-2NC	Left	CR104PSK33A92L
Maintained	3	2NO-2NC	Center	CR104PSK33A92C
Maintained	3	2NO-2NC	Right	CR104PSK33A92R
Maintained	3	2NO-2NC	Left, Right, and Center	CR104PSK33A92W
Maintained	5	None	Left	CR104PSK35A00L
Maintained	5	None	Center	CR104PSK35A00C
Maintained	5	None	Right	CR104PSK35A00R
Maintained	5	None	Left, Right, and Center	CR104PSK35A00W
Maintained	5	2NO-2NC	Left	CR104PSK35A92L
Maintained	5	2NO-2NC	Center	CR104PSK35A92C
Maintained	5	2NO-2NC	Right	CR104PSK35A92R
Maintained	5	2NO-2NC	Left, Right, and Center	CR104PSK35A92W
Maintained	6	None	Left	CR104PSK36A00L
Maintained	6	None	Center	CR104PSK36A00C
Maintained	6	None	Right	CR104PSK36A00R
Maintained	6	None	Left, Right, and Center	CR104PSK36A00W
Maintained	6	2NO-2NC	Left	CR104PSK36A92L
Maintained	6	2NO-2NC	Center	CR104PSK36A92C
Maintained	6	2NO-2NC	Right	CR104PSK36A92R
Maintained	6	2NO-2NC	Left, Right, and Center	CR104PSK36A92W

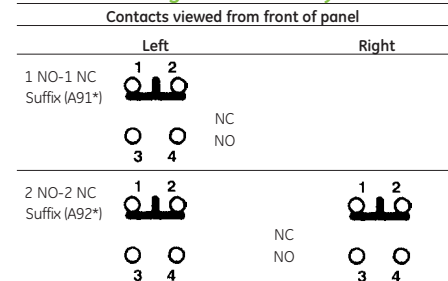
### 3-Position Selector Switches - Key Operated

Operator Position	Cam #4		Cam #2		Cam #3		Cam #5		Cam #6	
	Type of Contact Block	Mounting Location Left/Right	Type of Contact Block	Mounting Location Left/Right	Type of Contact Block	Mounting Location Left/Right	Type of Contact Block	Mounting Location Left/Right	Type of Contact Block	Mounting Location Left/Right
○ ○ X	NO	L or R	-	-	NO	L or R	NO	L or R	NO	Left
○ X ○	-	-	NC	L or R	NC	L or R	NC	Right	-	-
X ○ ○	NC	L or R	NO	L or R	-	-	NC	Left	NO	Right
X X ○	-	-	-	-	-	-	-	-	NC	Left
○ X X	-	-	-	-	-	-	-	-	NC	Right

In the product number of a selector switch, the cam is identified by the fifth figure after the "104".

**Example:** CR104PSG2 1 B, the cam number is 1.

### Schematic Diagrams - Factory Forms



Numbers and letters are molded into blocks at terminals.  
\*Key removal code.



Extra Keys: See pages 9-39  
Nameplates: See pages 9-40 to 9-41  
Technical Data: See pages 9-48 to 9-49

Drilling Plans and Dimensions: See page 9-49  
Product Number Selection Instructions: See pages 9-2