

# HORIZONTAL CABLE MANAGEMENT, SHELVES AND ACCESSORIES

## Rack and Cabinet Accessories

### OR-Z4-RR-WC Earthquake Bracing Kit



OR-Z4-RR-WC

### Earthquake Bracing Kit

Earthquake bracing kits secure installations against excessive damage from earthquakes, or simply add another measure of stability in areas not zoned. The kit is easy to install: Drill a 5/8" clearance hole in the top angle of your rack; attach brackets to both ends of a 5/8"-11" threaded rod (ordered separately); then brace the assembly to a beam, column or load-bearing wall.

PART NO.	DESCRIPTION
OR-Z4-RR-WC	Kit contains: (4) brackets – 5/8" hole, (2) 1/2"-13 hex nuts, (2) 1/2"-13 x 1 bolt, (2) 1/2" split lock washer

Notes: Use threaded rods on page 187.

### OR-60400 Panel Mounting Screws



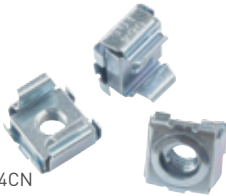
OR-60400005

### Panel Mounting Screws

Legrand® mounting screws replace lost or damaged screws for patch panels and cable management panels. These combination head screws with #12-24 threads have a pilot point for easy starting. Black.

PART NO.	DESCRIPTION
OR-60400005	#12-24 x .625", 4pk
OR-60400533	#12-24 x .625", 50pk

### OR-PS Cage Nuts



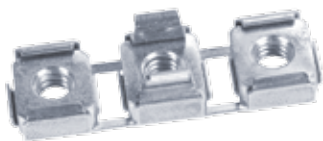
OR-PS-1224CN

### Cage Nuts

Cage nuts adapt to holes that meet specific server threads. Available in #10-32, #12-24, and M6 metric applications. Fits all EIA rack uprights with square holes. Cage nuts are treated with spring grip nut retainer for heavy-duty performance. Zinc plated.

PART NO.	DESCRIPTION
OR-PS-1032CN	.50"H x .50"W x .38"D, thread size: #10-32, 50pk
OR-PS-1224CN	.50"H x .50"W x .38"D, thread size: #12-24, 50pk
OR-PS-M6X1CN	.50"H x .50"W x .38"D, thread size: M6 (metric), 50pk

### OR-RU-1224CN Cage Nuts



OR-RU-1224CN

### Cage Nuts

Legrand rack unit cage nuts provide steel nuts in all three positions of a 1-3/4" rack unit with the installation of a single multiple nut.

PART NO.	DESCRIPTION
OR-RU-1224CN	Thread size: #12-24, 50pk

# HORIZONTAL CABLE MANAGEMENT, SHELVES AND ACCESSORIES

## Rack and Cabinet Accessories

### OR-JH-93, OR-CA-93, OR-WA-93 Hardware



OR-CA-93

### Hardware

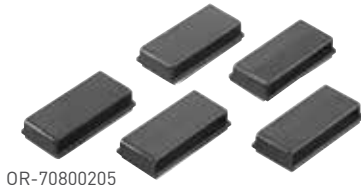
Legrand® offers a selection of hardware to support the specific needs of each installation. Order hardware with equipment racks and accessories to readily complete installations.

PART NO.	DESCRIPTION
OR-JH-93	Junction hardware; (6) 3/8" x 3/4" bolts with nuts and washers
OR-CA-93	Concrete floor anchors; (2) 3/8" x 3" bolts, with nuts and washers
OR-WA-93	Wooden floor anchors; (2) 3/8" x 2" bolts, with washers

### Cable Management Straps

Legrand cable management straps and accessories provide an organized solution for the management of patch and horizontal distribution cables.

### OR-70800205 Saddles



OR-70800205

### Saddles

Self-adhesive saddles will attach to any smooth dry surface and are designed to accept the hook and loop straps shown below. Black.

PART NO.	DESCRIPTION
OR-70800205	Two-way, self-adhesive base, for cable management straps up to 1.25" maximum width, 10pk

### OR-707000 Color-Coded Cable Management Straps



OR-70700080

### Color-Coded Cable Management Straps

Color-coded cable management straps provide an organized solution for the management of patch and horizontal distribution cables. The 3/4" W straps have a hook and loop type closure to secure and administer cables without damaging the construction of the copper or fiber cable.

PART NO.	DESCRIPTION
OR-70700080	6" L x .75" W, grip range: .625" to 1.625" diameter, 10pk
OR-70700079	12" L x .75" W, grip range: 1.25" to 3.25" diameter, 10pk

Notes: To order colored straps, specify color by putting color code at end of part number Color Code: -00=Black, -22=Red, -23=Orange, -24=Yellow, -25=Green, -26=Blue (Example: To order a 6" red OR-70700080 strap: OR-70700080-22).