

Flexible Cord and Cable Fittings



Liquidtight Strain Relief Fittings

| Cat. No. | Cable Size Range min.-max. | Hub Size (in.) | Throat Dia. Min. (in.) | Fig. | Dimensions (in.) | | |
|----------|----------------------------|----------------|------------------------|------|------------------|---------|-------|
| | | | | | A | B | C |
| 2516† | (0.060-0.125) | 1/4 | 23/64 | 2 | 53/64 | 1-7/16 | 15/32 |
| 2517† | (0.120-0.250) | | 23/64 | | 53/64 | 1-7/16 | 15/32 |
| 2518† | (0.060-0.150) | 3/8 | 29/64 | 2 | 31/32 | 1-1/2 | 15/32 |
| 2519†** | (0.150-0.300) | | 29/64 | | 31/32 | 1-1/2 | 15/32 |
| 2520 | (0.125-0.250) | 1/2 | 9/16 | 1 | 1-5/32 | 1-11/16 | 5/8 |
| 2521 | (0.250-0.375) | | 9/16 | | 1-5/32 | 1-11/16 | 5/8 |
| 2522 | (0.375-0.500) | | 9/16 | | 1-5/32 | 1-11/16 | 5/8 |
| 2523 | (0.450-0.560) | | 9/16 | | 1-5/32 | 1-11/16 | 5/8 |
| 2524* | (0.500-0.625) | | 5/8 | | 1-3/8 | 1-3/4 | 5/8 |
| 2525* | (0.625-0.750) | | 5/8 | | 1-3/8 | 1-3/4 | 5/8 |
| 2530 | (0.125-0.250) | 3/4 | 13/16 | 1 | 1-3/8 | 1-3/4 | 9/16 |
| 2531 | (0.250-0.375) | | 13/16 | | 1-3/8 | 1-3/4 | 9/16 |
| 2532 | (0.375-0.500) | | 13/16 | | 1-3/8 | 1-3/4 | 9/16 |
| 2534 | (0.500-0.625) | | 13/16 | | 1-3/8 | 1-3/4 | 9/16 |
| 2535 | (0.625-0.750) | | 13/16 | | 1-3/8 | 1-3/4 | 9/16 |
| 2536* | (0.750-0.880) | | 3/4 | | 1-11/16 | 1-15/16 | 5/8 |
| 2541 | (0.250-0.375) | 1 | 49/64 | 1 | 1-3/8 | 1-23/32 | 9/16 |
| 2542 | (0.375-0.500) | | 49/64 | | 1-3/8 | 1-23/32 | 9/16 |
| 2544 | (0.500-0.625) | | 49/64 | | 1-3/8 | 1-23/32 | 9/16 |
| 2545 | (0.625-0.750) | | 49/64 | | 1-3/8 | 1-23/32 | 9/16 |
| 2546 | (0.750-0.875) | | 63/64 | | 1-11/16 | 1-7/8 | 23/32 |
| 2547 | (0.875-0.985) | | 63/64 | | 1-11/16 | 1-7/8 | 9/16 |
| 2548* | (0.880-1.065) | | 29/32 | | 2-3/32 | 2-3/8 | 25/32 |
| 2549* | (1.065-1.205) | | 29/32 | | 2-3/32 | 2-3/8 | 25/32 |

* Remove sufficient outer covering of cable to permit conductors to pass thru fitting body

† UL not applicable

** Not CSA Certified

Complies with JIC standards

UL Listed as liquidtight strain relief, and outlet bushing. CSA certified watertight when used with 5262 Series Sealing Ring. Gasket (Sold separately)

Temperature rating: 105°C

For Wiremesh Grips refer to page B74

| Cat. No. | Cable Size Range min.-max. | Hub Size (in.) | Throat Dia. Min. (in.) | Fig. | Dimensions (in.) | | |
|----------|----------------------------|----------------|------------------------|---------|------------------|---------|---------|
| | | | | | A | B | C |
| 2558 | (0.880-1.065) | 1-1/4 | 1-17/64 | 1 | 2-3/32 | 2-5/32 | 13/16 |
| 2559 | (1.065-1.205) | | 1-17/64 | | 2-3/32 | 2-5/32 | 13/16 |
| 2556* | (1.187-1.375) | | 1-1/4 | | 2-11/32 | 2-1/2 | 13/16 |
| 2557* | (1.375-1.485) | | 1-1/4 | | 2-11/32 | 2-1/2 | 13/16 |
| 2562 | (0.812-1.000) | | 1-1/2 | | 1-7/16 | 1 | 2-11/32 |
| 2563 | (1.000-1.187) | 1-7/16 | | 2-11/32 | 2-7/16 | | 11/16 |
| 2564 | (1.187-1.375) | 1-7/16 | | 2-11/32 | 2-7/16 | | 11/16 |
| 2565* | (1.375-1.625) | 1-29/64 | | 2-13/16 | 2-5/8 | | 13/16 |
| 2573 | (1.125-1.375) | 2 | | 1-7/8 | 1 | | 2-13/16 |
| 2574 | (1.375-1.625) | | 1-7/8 | 2-13/16 | | 2-5/8 | 11/16 |
| 2575 | (1.625-1.875) | | 1-7/8 | 2-13/16 | | 2-5/8 | 11/16 |
| 2576* | (1.750-1.965) | | 1-29/32 | 3-7/32 | | 3-1/2 | 27/32 |
| 2577* | (1.937-2.187) | | 1-29/32 | 3-7/32 | | 3-1/2 | 27/32 |
| 2584 | (1.750-1.965) | 2-1/2 | 2 | 1 | 3-7/32 | 3-3/4 | 1-1/32 |
| 2585* | (1.937-2.187) | | 2 | | 3-7/32 | 3-3/4 | 1-1/32 |
| 2586* | (2.156-2.360) | | 2-5/32 | | 3-15/16 | 4-1/4 | 1-1/32 |
| 2587* | (2.350-2.565) | | 2-5/32 | | 3-15/16 | 4-1/4 | 1-1/32 |
| 2592 | (2.156-2.360) | 3 | 2-13/32 | 1 | 3-15/16 | 4-1/4 | 1-1/32 |
| 2593 | (2.350-2.565) | | 2-13/32 | | 3-15/16 | 4-1/4 | 1-1/32 |
| 2594 | (2.535-2.750) | | 2-13/32 | | 3-15/16 | 4-1/4 | 1-1/32 |
| 2595* | (2.735-2.985) | | 2-13/16 | | 4-11/16 | 4-13/16 | 1-1/8 |
| 2596* | (2.970-3.220) | | 2-13/16 | | 4-11/16 | 4-13/16 | 1-1/8 |

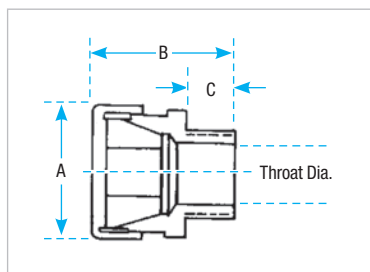
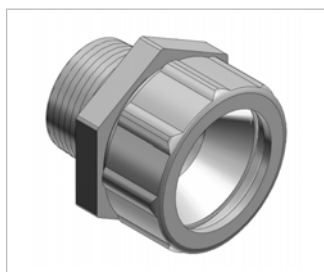


Fig. 1

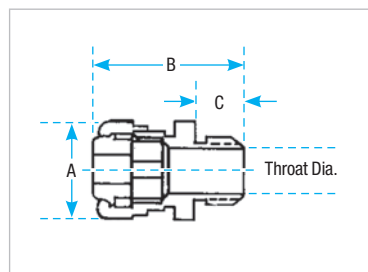


Fig. 2



5262 Series