

ALIGNMENT TOOL

Utilizing rare earth magnets, the alignment tool easily snaps into place and allows you to align all your 3/4" conduit without the need for a level or measuring tape.



Part# 68075



WIRE VORTEX



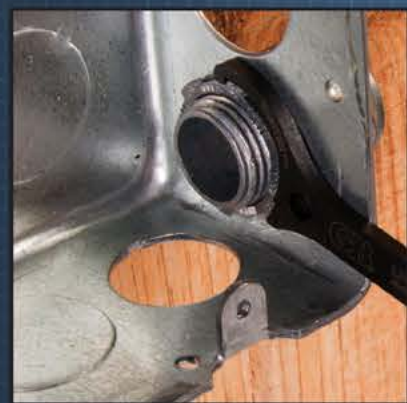
If you need an extra pair of hands on the job, try the Wire Vortex. This wire pulling guide fits on 4" square boxes and saves you tons of time when pulling wire.

Part# 40001

FEATURES:

- Protects wire from damage when pulling
- Can pull wire in all 4 directions
- Use for standard (shallow) or deep boxes
- Built with durable, impact-resistant plastic
- Easy to slip on and off

THE LOCKNUT WRENCH



How many locknuts have you bashed with your flat blade screw driver? The Locknut Wrench allows you to tighten locknuts quickly and works great in tight spaces. The patent pending design is available in 3 sizes.

- Offset ends allow access in tight locations. Handle cut away sections are engineered to exact lock nut engagement and rotation
- Singular handle prevents wrist tension
- Clear permanent laser etched markings to ease use
- Comprised of durable steel and strong enough for any job



Available Sizes:

- Part# 79050 - 1/2"
- Part# 79075 - 3/4"
- Part# 79100 - 1"
- Part# 79150 - Locknut Wrench Kit (Includes 1/2" & 3/4")

EXTENDO NUT DRIVER



SEE IT IN ACTION



The Extendo Nut Driver kit is designed to adapt a standard 1/2" conduit into an extension nut driver for threaded rod. Utilizing the concept of a hollow shank nut driver, the Extendo Nut Driver gives you the flexibility to cut the conduit any length you need to drive the nut up the full length of threaded rod. With this tool on hand, you no longer need to buy multiple size hollow shank nut drivers! Save yourself time and money with this complete extension nut driver kit.

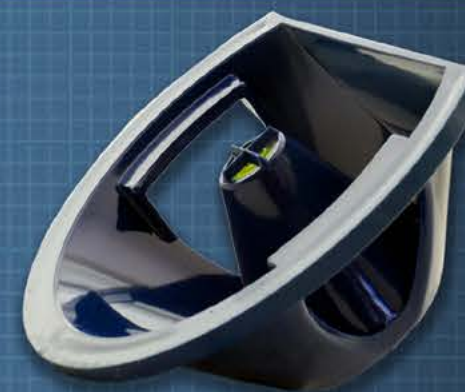
- Kit includes: 7/16", 9/16" sockets, and 1/4" adaptor
- No need to buy multiple hollow shank nut drivers
- Drill attachment designed for 3/8" chuck, will fit quick change drills
- Made from hardened steel
- Adaptable to any length nut driver needed
- Extends up to 10'

Part# NT1050



7/16" nut driver for 1/4" rod
9/16" nut driver for 3/8" rod

GD CENTER FINDER



Part# 67500

The GDCenter Finder is a new product that revolutionizes the installation of electrical panels and junction boxes. No need to learn a new installation process. Pull your layout just as you always have, but this time aided with the GDCenter Finder. Your center point will always be level and clearly identified. The days of "close enough" are over. Finally a center tool that works!



IT'S SIMPLE... FOAM LINE CARRIERS ARE EXPENSIVE

BAG PIPERS

ARE CHEAPER AND WORK MUCH BETTER

3 sizes available to fit conduit 1/2" up to 6"



Part#

BP05.125 (sm) 1/2" x 1 1/4" - 10 pack
 BP150.40 (med) 1 1/2" x 4" - 5 pack
 BP20.60 (lg) 2" x 6" - 3 pack
 BP05.600 (multi-pack) 1/2" x 6" - 6 pack

FLEX PULLER



- Flexible metal conduit pulling tool easily screws onto exterior of MC cable & provides a hook to pull cable.
- No more getting caught up in insulation or other obstacles!
- Can be used on #14, #12, & #10 MC Cable!
- Provides a hook to pull cable through hollow & insulated walls and ceilings.



Part# 42620

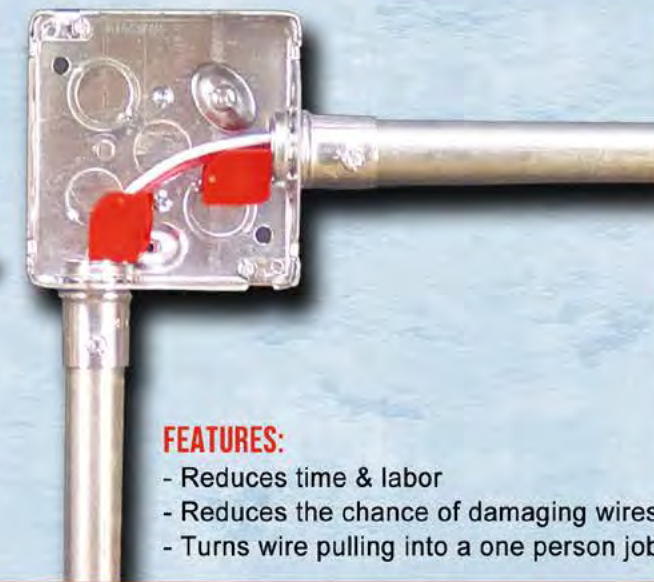
THE ALL AMERICAN PULL BUDDY

SHOEHORNS FOR YOUR WIRE



Part#

42000 - Multi-Pack (6 pack / 2 of each)
 42050 - 1/2" Blue (10 Pack)
 42075 - 3/4" Red (10 Pack)
 42100 - 1" White (10 Pack)



FEATURES:

- Reduces time & labor
- Reduces the chance of damaging wires
- Turns wire pulling into a one person job

THE PENGUIN PULLER

The Penguin Puller Sr. and Penguin Puller Jr. are revolutionary new tools designed to aid in easily pulling large cables. The sleek, bullet shape allows for seamless pulling, no tape or crimps required. Utilizing four slots and allen-key set screws, the Penguin Puller Sr. and Penguin Puller Jr. are rated for 4000 lbs. of pull strength. These tools are the cool new kids on the block and here to stay when it comes to pulling wire!

Part#

69700 - Penguin Puller Sr. For Pipe 2 1/2" and Larger
 69705 - Penguin Puller Jr. For Pipe 2" and Larger



Features:

- 4000 LBS. MAX PULL STRENGTH
- Penguin Puller Sr. - 3/0 to 350 MCM Copper or Aluminum
- Penguin Puller Jr. - 2/0 to 4/0 Copper or Aluminum
- No tape, no crimps, no mess
- Reusable

LB Wire Guide

THE LB WIRE GUIDE IS A "SHOE HORN" FOR 2" LB'S.



See It In Action!



FEATURES:

- ASSISTS WHILE WORKING ON YOUR OWN
- FOR PVC LB FITTINGS AND IS ADAPTABLE TO MOST METAL LB'S
- FAST FOR ONE PERSON CONDUCTOR INSTALLATIONS
- INSTALLS IN TWO POSITIONS TO FIT BOTH "ENDS" OF THE LB

MFG NOTE

TWO HUNDRED AMP SERVICES (3/0 WIRE) CAN BE HARD ON YOUR KNUCKLES. THE LB WIRE GUIDE PUTS THE WIRE IN THE PIPE AND LEAVES THE SKIN ON YOUR FINGERS.

Part# 42200

StingRay

Part# 40400



SNAP IN PLACE AND PULL YOUR WIRE

- PROTECTS EXPENSIVE AND FRAGILE CABLES
- PROTECTS CEILING FROM TWISTING AND MARRING
- PREVENTS CABLES FROM TANGLING WITH THE CEILING, SAVING TIME AND LABOR
- SMOOTH INTERIOR CREATES AN ALMOST FRICTIONLESS CHASE
- SIDE SLIT ALLOWS FOR EASY CABLE REMOVAL AT ANY TIME
- EASY TO INSTALL AND REMOVE



Why Cable Glydz?

Cable Glydz can take any wire jacket type by any manufacturer and achieve consistent coefficient of friction factors as low as .07 on average. Soaping is NEVER needed regardless of length of installation!

For more information go to WWW.RACK-A-TIERS.COM/321/CABLE-GLYDZ

