

Pipe straps, pipe and conduit clamps and hangers

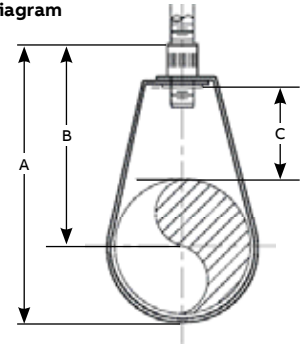
Conduit and cable clamps



C727 Adjustable ring

Tube size (in.)	Rod size (in.)	A (in.)	B (in.)	C (in.)	Thickness	Width (in.)	Approx max. rec. load	Wt./C lb
1/2	3/8	3 3/8	2 7/8	1 3/8	16 ga	1	400	9
3/4	3/8	3 3/8	2 1/2	1 1/8	16 ga	1	400	9
1	3/8	3 3/8	2 3/8	1 1/8	16 ga	1	400	9
1 1/4	3/8	3 3/4	2 7/8	1 1/8	16 ga	1	400	10
1 1/2	3/8	3 7/8	2 7/8	1	16 ga	1	400	11
2	3/8	4 1/4	3	1	16 ga	1	400	12
2 1/2	1/2*	5 3/4	4 1/4	1 5/8	14 ga	1 3/16	600	28
3	1/2*	6	4 1/8	1 1/4	14 ga	1 3/16	600	30
3 1/2	1/2*	7 3/8	5 1/4	2 1/8	14 ga	1 3/16	600	34
4	5/8*	7 3/8	5	2 3/8	14 ga	1 1/4	1,000	37
5	5/8*	9	6 1/8	2 1/4	14 ga	1 1/4	1,250	83
6	3/4**	9 3/8	6 1/2	1 7/8	14 ga	1 1/4	1,250	95

Diagram



*3/8 in. nut is used when NFPA rod sizing is requested.

**1/2 in. nut is used when NFPA rod sizing is requested.

Standard finish – Pregalvanized (no suffix)

Carbon steel. For suspension of non-insulated pipe lines. Complies with specification MSS SP69, Type 10.

Example: C727-1/2

Pipe straps, pipe and conduit clamps and hangers

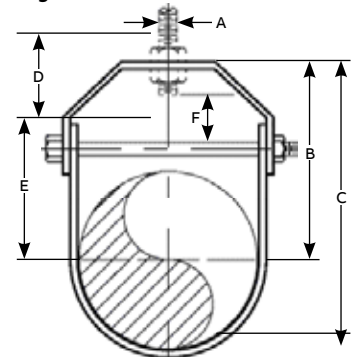
Pipe hangers



CL710 Light-duty adjustable clevis hanger

Pipe size (in.)	Thickness of steel (in.)		A (in.)	B (in.)	C (in.)	D (in.)	E (in.)	F (in.)	Max. rec. load, lb	Wt./C lb
	Upper	Lower								
3/8	16 ga. x 7/8	16 ga. x 7/8	3/8	1 1/8	2 3/16	2 1/2	1 1/4	5/16	150	12
1/2	16 ga. x 7/8	16 ga. x 7/8	3/8	1 3/4	2 3/16	2 1/2	1 1/8	5/16	150	13
3/4	16 ga. x 7/8	16 ga. x 7/8	3/8	1 7/8	2 1/4	2 1/2	1 1/4	1/2	250	15
1	16 ga. x 7/8	16 ga. x 7/8	3/8	2 3/16	2 3/4	2 1/2	1 1/2	3/4	250	18
1 1/4	16 ga. x 7/8	16 ga. x 7/8	3/8	2 5/8	3 3/8	2 1/2	1 3/4	1	250	20
1 1/2	13 ga. x 7/8	13 ga. x 7/8	3/8	3	3 3/8	2 1/2	2 1/4	1 3/16	250	30
2	13 ga. x 7/8	13 ga. x 7/8	3/8	3 9/16	4 3/4	2 1/2	2 13/16	1 5/8	250	38
2 1/2	1/8 x 1 1/4	1/8 x 1 1/4	1/2	4	5 1/2	3	3 1/4	1 3/8	350	80
3	1/8 x 1 1/4	1/8 x 1 1/4	1/2	4 9/16	6 1/2	3	3 9/16	1 1/2	350	89
3 1/2	1/8 x 1 1/4	1/8 x 1 1/4	1/2	5	7	3	4 1/8	1 3/4	350	106
4	3/16 x 1 1/4	1/8 x 1 1/4	1/2	5 1/4	7 1/2	3 1/2	4 1/4	1 7/8	400	146
6	1/4 x 1 1/2	3/16 x 1 1/2	3/4	6 13/16	10 1/8	4	5 5/8	1 7/8	1,940	320
8	1/4 x 1 3/4	3/16 x 1 3/4	7/8	8 5/16	12 5/8	4 1/4	7	2 1/8	1,940	500

Diagram



Standard finishes – GoldGalv®, Bare (B), electrogalvanized (EG), fiberglass (FG).

Carbon steel

Used on non-insulated, stationary pipelines. A lock nut above the clevis yoke is required for full rated load.

Example: CL710-3/8B

Pipe straps, pipe and conduit clamps and hangers

Pipe hangers



C720 Riser clamp

Diagram	Pipe size (in.)	A (in.)	Thickness (in.)	Width (in.)	Bolt (in.)	Max. rec. load, lb	Wt./ea. approx.
	1/2	9 5/8	3/16	1	3/8 x 1 1/2	220	1,01
	3/4	9 1/4	3/16	1	3/8 x 1 1/2	220	1,06
	1	9 5/8	3/16	1	3/8 x 1 1/2	220	1,07
	1 1/4	9 5/8	1/4	1	3/8 x 1 1/2	250	1,12
	1 1/2	10	1/4	1	3/8 x 1 1/2	250	1,20
	2	10 1/2	1/4	1	3/8 x 1 1/2	300	1,25
	2 1/2	11 1/16	1/4	1	3/8 x 1 1/2	400	1,67
	3	11 13/16	1/4	1	3/8 x 1 1/2	500	1,81
	3 1/2	13	1/4	1	1/2 x 1 1/2	600	2,12
	4	13 1/2	1/4	1	1/2 x 1 1/2	750	2,22
	5	14	1/4	1 1/2	1/2 x 1 3/4	1,500	3,44
	6	15 3/16	1/4	1 1/2	1/2 x 1 3/4	1,600	3,65
8	19	3/8	1 1/2	3/8 x 2 1/2	2,500	7,24	

Standard riser

Standard finishes – GoldGalv®, bare (B)
 Available in sizes 1/2 in. through 10 in.
 Complies with specification MSS SP69, Type 8.
Example: C720-1-1/2B

C726 Double bolt pipe clamp

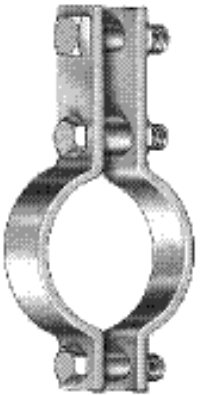


Diagram	Pipe size (in.)	B (in.)	C (in.)	D (in.)	E (in.)	F (in.)	H (in.)	S (in.)	Max. rec. load, lb	Wt./C approx.
	3/4	1 1/16	5/8	3 3/16	2 1/2	3/8	1 11/16	3/16 x 1	950	66
	1	1 1/2	5/8	3 3/4	2 1/2	3/8	2 1/16	3/16 x 1	950	69
	1 1/4	1 1/2	3/4	3 11/16	2 7/8	3/8	2 1/4	3/16 x 1	950	75
	1 1/2	1 13/16	1 1/16	4 7/8	3 3/4	5/8	2 13/16	1/4 x 1 1/4	1,545	181
	2	2 1/4	1 1/16	5 11/16	4 11/16	5/8	3 3/16	1/4 x 1 1/4	1,545	200
	2 1/2	2 5/8	1 1/16	6 1/2	5 5/8	5/8	3 1/2	1/4 x 1 1/4	1,545	232
	3	2 3/4	1 1/16	6 7/8	6	5/8	3 3/4	1/4 x 1 1/4	1,545	258
	3 1/2	3	1 1/16	7 1/16	6 3/16	5/8	4	1/4 x 1 1/4	1,545	264
	4	3 3/8	1 1/16	7 5/8	6 1/2	3/4	4 1/2	3/8 x 2	2,500	750
	5	3 15/16	1 1/16	8 5/8	7	3/4	5	3/8 x 2	2,500	813
	6	4 3/4	1 1/16	9 15/16	8 3/16	1	6 1/8	3/8 x 2 1/2	2,865	1311
	8	5 3/4	1 1/16	10 15/16	9 3/16	1	7 7/8	3/8 x 2 1/2	2,865	1467

Standard finish – bare (B)
 carbon steel. For the suspension of insulated pipelines.
 Normally used with weldless eye nut.
Example: C726-1/2B