

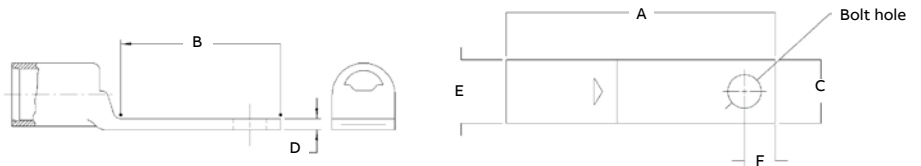
Compression connectors for copper conductors



Narrow-tongue copper lugs – One-hole, standard barrel certified to 600 V and recommended up to 35 kV*

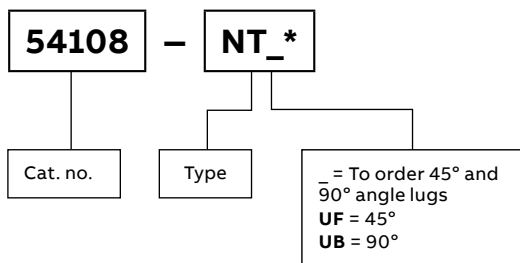
Cat no.	Wire size			Dimensions in. (mm)						Die code	Colour code
	Code cable	Flex cable classes G, H, I, K, M	Bolt size	A	B	C	D	E	F		
54138NT	#4 AWG	#5 AWG – 91/24	#10	1.31 (33.3)	0.56 (14.2)	0.37 (9.4)	0.10 (2.5)	0.37 (9.4)	0.25 (6.4)	29	Grey
54107NT	#2–3 AWG	#3 AWG – 125/24	¼	1.50 (38.1)	0.65 (16.5)	0.41 (10.4)	0.07 (1.8)	0.41 (10.4)	0.25 (6.4)	33	Brown
54108NT	#1 AWG	#2 AWG, 150, 175/24	¼	1.50 (38.1)	0.65 (16.5)	0.47 (11.9)	0.11 (2.8)	0.47 (11.9)	0.25 (6.4)	37	Green
54152NT	1/0 AWG	#1 AWG – 225/24	¼	1.60 (40.6)	0.65 (16.5)	0.52 (13.2)	0.13 (3.3)	0.52 (13.2)	0.25 (6.4)	42	Pink
54157NT	2/0 AWG	1/0 AWG – 275/24	¼	1.60 (40.6)	0.65 (16.5)	0.57 (14.5)	0.13 (3.3)	0.57 (14.5)	0.25 (6.4)	45	Black
54162NT	3/0 AWG	2/0 AWG – 325/24	¼	1.68 (42.7)	0.65 (16.5)	0.63 (16.0)	0.13 (3.3)	0.63 (16.0)	0.25 (6.4)	50	Orange
54167NT	4/0 AWG	3/0 AWG – 450/24	¼	1.90 (48.3)	0.65 (16.5)	0.70 (17.8)	0.14 (3.6)	0.70 (17.8)	0.25 (6.4)	54	Purple
54172NT	250 kcmil	4/0 AWG – 550/24	¼	2.00 (50.8)	0.65 (16.5)	0.77 (19.6)	0.14 (3.6)	0.77 (19.6)	0.25 (6.4)	62	Yellow
54178NT04	300 kcmil	650/24	¼	2.33 (59.2)	0.88 (22.4)	0.85 (21.6)	0.15 (3.8)	0.85 (21.6)	0.25 (6.4)	66	White
54115NT	350 kcmil	650/24	½	2.75 (69.9)	1.25 (31.8)	0.93 (23.6)	0.18 (4.6)	0.93 (23.6)	0.50 (12.7)	71H	Red
54115NT06	350 kcmil	650/24	¾	2.50 (63.5)	1.00 (25.4)	0.93 (23.6)	0.18 (4.6)	0.93 (23.6)	0.38 (16.0)	71H	Red
54118NT	500 kcmil	925/24	½	3.25 (82.6)	1.25 (31.8)	1.10 (27.9)	0.22 (5.6)	1.10 (27.9)	0.50 (12.7)	87	Brown
54123NT08	750 kcmil	1,325/24	½	3.48 (88.4)	1.25 (31.8)	1.33 (33.8)	0.27 (6.9)	1.33 (33.8)	0.50 (12.7)	106H	Black
54123NT	750 kcmil	1,325/24	¾	3.80 (96.5)	1.58 (40.1)	1.33 (33.8)	0.27 (6.9)	1.33 (33.8)	0.63 (16.0)	106H	Black

Diagram



* For installations from 16 kV up to 35 kV, consult shielded cable manufacturers for stress relief and insulation requirements.

* Special lugs may have other catalog number constructions. Please contact technical services.



Ordering information

Other options include silver plating (add SP to catalog number), blind end (add BE to catalog number) and peep holes (add PH to catalog number).

Catalog no. example:

54108NTUB is a 90° angled one-hole narrow-tongue lug for #1 AWG.

Compression connectors for copper conductors

These Color-Keyed connectors are recommended for up to 15 kV applications.

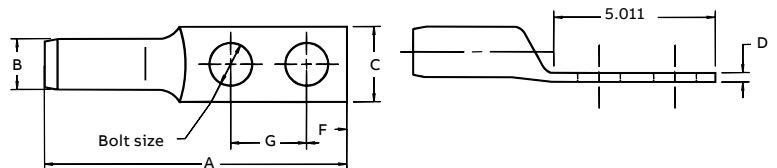
Installed with standard ABB 14 and 15-ton compression tools with special rounding dies, the compression forms the connector and conductor into a solid mass to provide an optimum electrical bond between connector and conductor. The rounding die overlapped compressions provide a smooth round surface. This combined with the tapered barrel ends, addresses the control for potentially damaging electrical stresses of high voltages.



Copper two-hole lugs – Certified to 600 V and recommended up to 15 kV

Cat no.	Cable size**		Dimensions in. (mm)							Installing tools 14 and 15 tons*		
	Code cable size (in.)	Stud size (in.)	A	B	C	D	E	F	G	Die set cat. no.	Strip length (in.)	Colour code
54475	1/0 AWG	3/8	3.56 (90.4)	0.53 (13.5)	0.77 (19.6)	0.12 (3.0)	0.38 (9.7)	0.38 (9.7)	1.00 (25.4)	15CA42R	1 1/8	Pink
54476	2/0 AWG	1/2	4.67 (118.6)	0.56 (14.2)	0.83 (21.1)	0.12 (3.0)	0.50 (12.7)	0.50 (12.7)	1.75 (44.5)	15CA45R	1 1/8	Black
54478	3/0 AWG	1/2	4.75 (120.7)	0.63 (16.0)	0.94 (23.9)	0.12 (3.0)	0.50 (12.7)	0.50 (12.7)	1.75 (44.5)	15CA49R	1 3/4	Orange
54479	4/0 AWG	1/2	4.64 (117.9)	0.69 (17.3)	1.00 (25.4)	0.13 (3.3)	0.50 (12.7)	0.50 (12.7)	1.75 (44.5)	15CA54R	1 3/16	Purple
54480	250 kcmil	1/2	5.17 (131.3)	0.75 (19.1)	1.08 (45.7)	0.14 (3.6)	0.50 (12.7)	0.50 (12.7)	1.75 (44.5)	15CA60R	2 1/32	Ruby
54481	300 kcmil	1/2	5.16 (131.1)	0.81 (20.6)	1.19 (30.2)	0.16 (4.1)	0.50 (12.7)	0.50 (12.7)	1.75 (44.5)	15CA66R	2 9/32	White
54482	350 kcmil	1/2	5.35 (135.9)	0.88 (22.1)	1.29 (32.8)	0.19 (4.8)	0.50 (12.7)	0.50 (12.7)	1.75 (44.5)	15CA71R	2 13/32	Red
54483	400 kcmil	1/2	5.35 (135.9)	0.92 (23.4)	1.36 (34.5)	0.18 (4.6)	0.50 (12.7)	0.50 (12.7)	1.75 (44.5)	15CA76R	2 13/32	Blue
54484	500 kcmil	1/2	5.60 (142.2)	1.06 (40.6)	1.54 (39.1)	0.23 (5.8)	0.50 (12.7)	0.50 (12.7)	1.75 (44.5)	15CA87R	2 13/32	Brown
54485***	600 kcmil	1/2	5.83 (148.1)	1.17 (29.7)	1.70 (43.2)	0.24 (6.1)	0.50 (12.7)	0.50 (12.7)	1.75 (44.5)	15CA84R	2 1/16	Green
54487***	750 kcmil	1/2	6.13 (155.7)	1.11 (27.9)	1.89 (48.0)	0.27 (6.9)	0.50 (12.7)	0.50 (12.7)	1.75 (44.5)	15CA106R	2 3/4	Black
54490	1,000 kcmil	1/2	6.60 (167.6)	1.50 (38.1)	2.18 (55.4)	0.31 (7.9)	0.50 (12.7)	0.50 (12.7)	1.75 (44.5)	15C125R•	2 29/32	-

Diagram



* Cat. no. TB15500 die adaptor required for TBM151.

• No adaptor required – TBM151 only.

** Cable size: Concentric (code) and compact strandings.

14-Ton tool UL listing limited to 1/0 AWG and 500 kcmil cable sizes.

*** 15-Ton tool only for 500 kcmil and over.

For tool and die selection charts, see the Tools, Dies and Kits catalogue.