

# Technical Information Bulletin

## LED Outdoor Luminaires



Date: \_\_\_\_\_ Name of distributor: \_\_\_\_\_  
 In hands date of project: \_\_\_\_\_ Client #: \_\_\_\_\_  
 Project name/Number: \_\_\_\_\_ Name of end user: \_\_\_\_\_

### ORDERING INFORMATION

Order code: 66887  
 Description: FL/S3/100-277/150W/40K/YK/BZ/STD  
 UPC: 69549668874  
 Case quantity: 1

### PHYSICAL DATA

Type: Flood Light  
 Finish: Bronze Powder Coating  
 Heat sink material: Diecast Aluminum  
 Lens material: Polycarbonate  
 Mounting: Yoke



### PERFORMANCE DATA

Watts (W): 150  
 Volts (VAC): 100-277  
 Colour temp. (K)<sup>1</sup>: 4 000  
 Lumen output (lm)<sup>2</sup>: 20 680  
 Lumen per Watts (lm/W): 136  
 CRI: >70  
 Life L70 (hrs)<sup>3</sup>: 50 000  
 THD (%): <20  
 Power factor: >0.9  
 Surge protection (Kv): 10  
 Frequency (Hz): 50/60  
 Dimming: 0-10 V  
 Operating temp. range: -40 °C to 40 °C (-40 °F to 104 °F)  
 NEMA type: 7H x 7V  
 B.U.G. rating: B4-U0-G3  
 IK rating: IK10  
 Photocell: No  
 DLC Premium: PL6GKQL8TXJH

<sup>1</sup> Typical colour temperature range: +/- 5 %

<sup>2</sup> Lumen values are derived from photometric testing. Initial lumens range: +/- 10 %

<sup>3</sup> Life hours are derived from IESNA LM80-08 testing report and projected per IESNA TM-21-11 extrapolations



### DESCRIPTION AND OTHER OPTIONS

FL	/	S3	/	100-277	/	150W	/	40K	/	YK	/	BZ	/	STD
Type		Series		Volts		Watts		Colour Temperature		Mounting		Finish		Brand
FL <sup>1</sup> Flood Light		S3 Series 3		100-277 100-277 VAC 277-480 277-480 VAC		100W 100 watts 150W 150 watts 230W 230 watts 300W 300 watts 400W 400 watts		40K 4 000 K 50K <sup>2</sup> 5 000 K		YK Yoke		BZ Bronze		STD STANDARD

<sup>1</sup>Wide flood 7H x 6V

<sup>2</sup>Contact your sales representative for availabilities and lead times on these products

This lighting equipment complies with Canadian standard ICES-005 for use in residential applications.  
 Data is based upon tests performed in a controlled environment and representative of relative performance.  
 Actual performance can vary depending on operating conditions. Specifications are subject to change without notice.  
 October 12, 2018

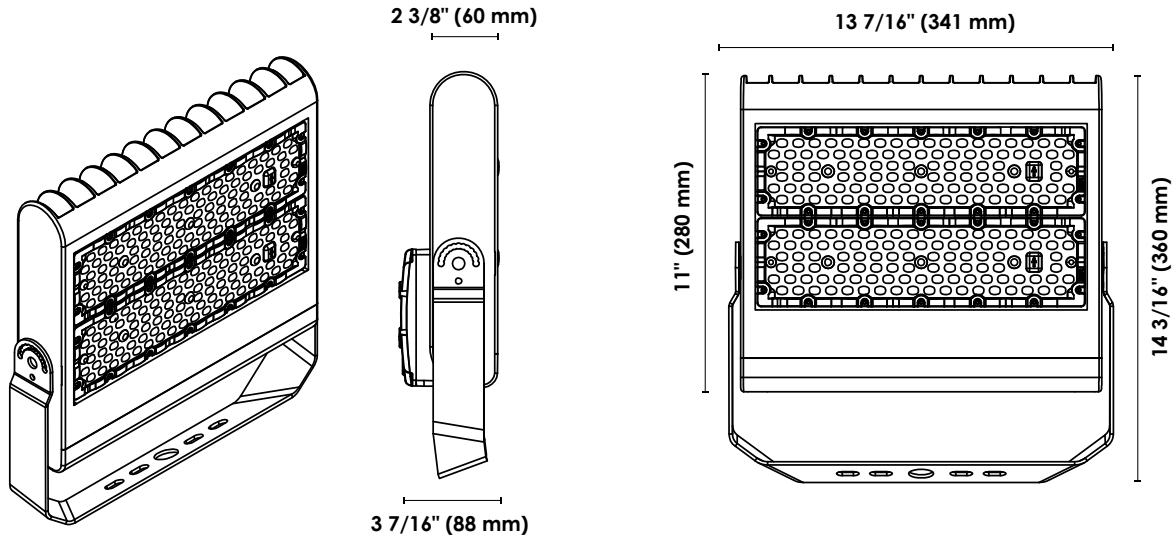
# Technical Information Bulletin

## LED Outdoor Luminaires

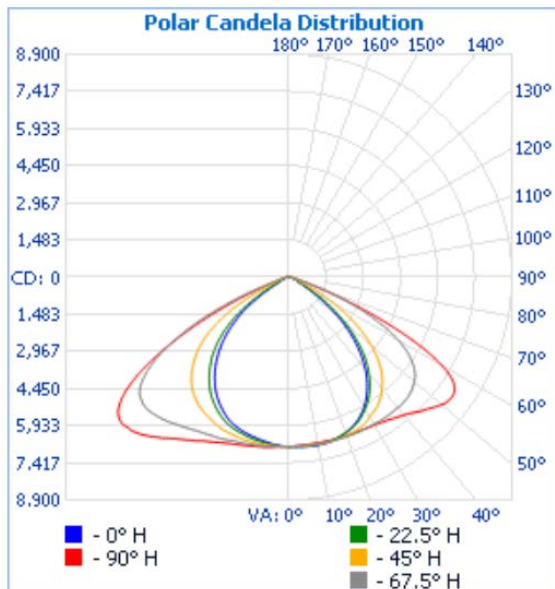


ORDER CODE: 66887

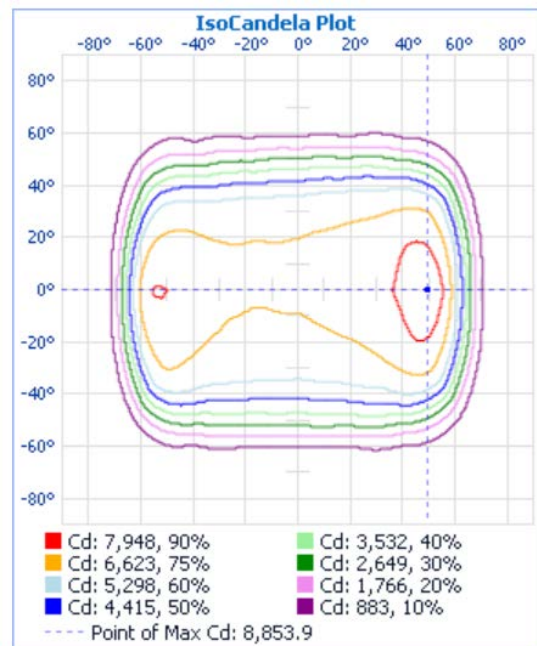
### TECHNICAL DRAWINGS AND DIMENSIONS



### POLAR CANDELA DISTRIBUTION\*



### ISO CANDELA PLOT\*



\*Complete IES files available on our website

Qty	Description	Price

I accept the specifications of the luminaire configuration mentioned above.

Name: \_\_\_\_\_

Company: \_\_\_\_\_

Signature: \_\_\_\_\_

Date: \_\_\_\_\_