

FEATURES & SPECIFICATIONS

INTENDED USE

Ideal where high brightness and good illumination levels are required such as retail, light industrial and warehouses.

ATTRIBUTES

Fixture can be assembled with snap together components and requires no tools. Available in one lamp or two lamp configuration.

CONSTRUCTION

Heavy-duty channel, die-formed from Code-gauge steel.

Sturdy channel cover secured by captive quarter-turn latch for easy access to wireway.

Combination endplate/channel connector furnished with each fixture.

FINISH

Five-stage iron phosphate pretreatment ensures superior paint adhesion and rust resistance. Painted parts finished with high-gloss, baked white enamel.

ELECTRICAL SYSTEM

MVOLT ballasts are NEMA Premium®/CEE qualified ballasts. Full light output - reduced energy. Less than 10% THD. Multi-volt operation, 120-277V.

120V ballasts are thermally protected, resetting, Class P, LPF, non-PCB, UL Listed, CSA Certified. Rapid-start ballasts are sound rated A.

INSTALLATION

For unit or row installations, surface or suspended mounting.

LISTING

UL listed to US and Canadian safety standards. Optional: Mexico NOM.

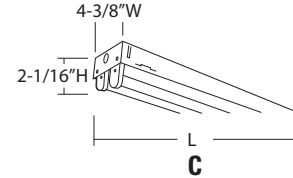
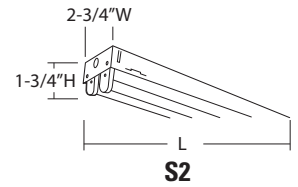
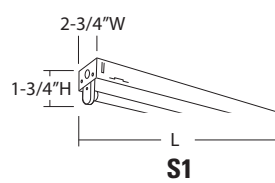
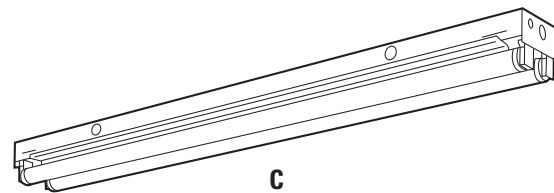
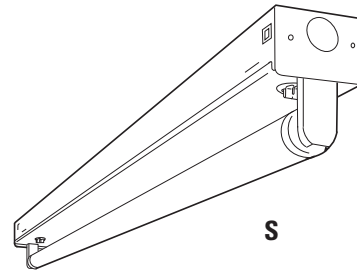
WARRANTY

Fixtures, including ballasts, are covered by Lithonia Lighting 24-month warranty against mechanical defects in manufacture.

Specifications subject to change without notice.

Catalog Number	
Notes	Type

Strip Lights



ORDERING INFORMATION

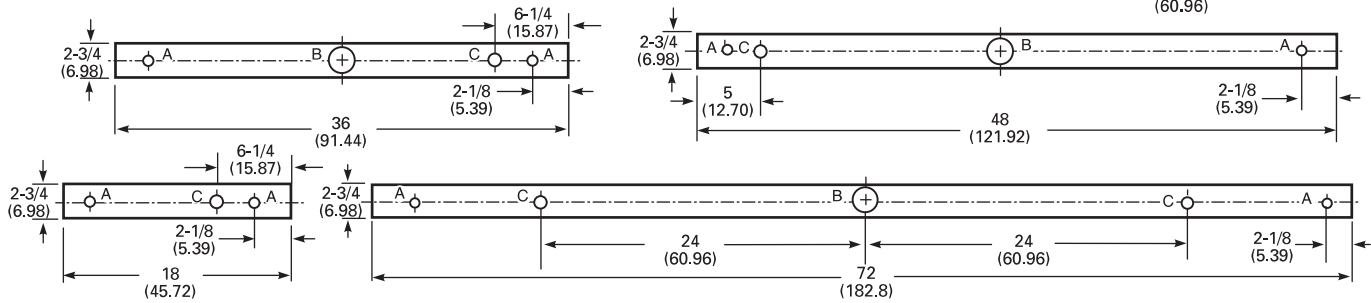
Catalog Number	UPC	Description	# of Lamps	Length	Wattage	Voltage	Ballast Type	ENERGY STAR® Qualified	Lamp Included	Pallet Qty.	Standard Carton Qty.
C232 MV	745975079711	T8 general-purpose strip	2	48"	32	120-277	NEMA Premium, instant start	N	N	99	1
TC232 MV	745975080809	T8 general-purpose strip	4	96"	32	120-277	NEMA Premium, instant start	N	N	99	1
C225 MV	745975081219	T8 general-purpose strip	2	36"	25	120-277	NEMA Premium, instant start	N	N	99	1
C217 MV	745975081493	T8 general-purpose strip	2	24"	17	120-277	NEMA Premium, instant start	N	N	198	1
C296	745973789766	T12 general-purpose strip	2	96"	75	120	Electronic, rapid start	N	N	99	1
S232 MV	745975276318	T8 narrow strip	2	48"	32	120-277	NEMA Premium, instant start	N	N	144	1
TS232 MV	745975276325	T8 narrow strip	4	96"	32	120-277	NEMA Premium, instant start	N	N	144	1
S225 MV	745975276295	T8 narrow strip	2	36"	25	120-277	NEMA Premium, instant start	N	N	168	1
S217 MV	745975276271	T8 narrow strip	2	24"	17	120-277	NEMA Premium, instant start	N	N	288	1
S132 MV	745975080755	T8 narrow strip	1	48"	32	120-277	NEMA Premium, instant start	N	N	144	1
TS132 MV	745975081158	T8 narrow strip	2	96"	32	120-277	NEMA Premium, instant start	N	N	144	1
S125 MV	745975081677	T8 narrow strip	1	36"	25	120-277	NEMA Premium, instant start	N	N	168	1
S117 MV	745975081516	T8 narrow strip	1	24"	17	120-277	NEMA Premium, instant start	N	N	288	1
S115	745973962992	T12 narrow strip	1	18"	15	120	Electronic, rapid start	N	N	288	1
S120	745973790212	T12 narrow strip	1	24"	20	120	Electronic, rapid start	N	N	288	1
S130	745973962985	T12 narrow strip	1	36"	30	120	Electronic, rapid start	N	N	168	1
S140	745973790250	T12 narrow strip	1	48"	40	120	Electronic, rapid start	N	N	144	1

Strip Lights

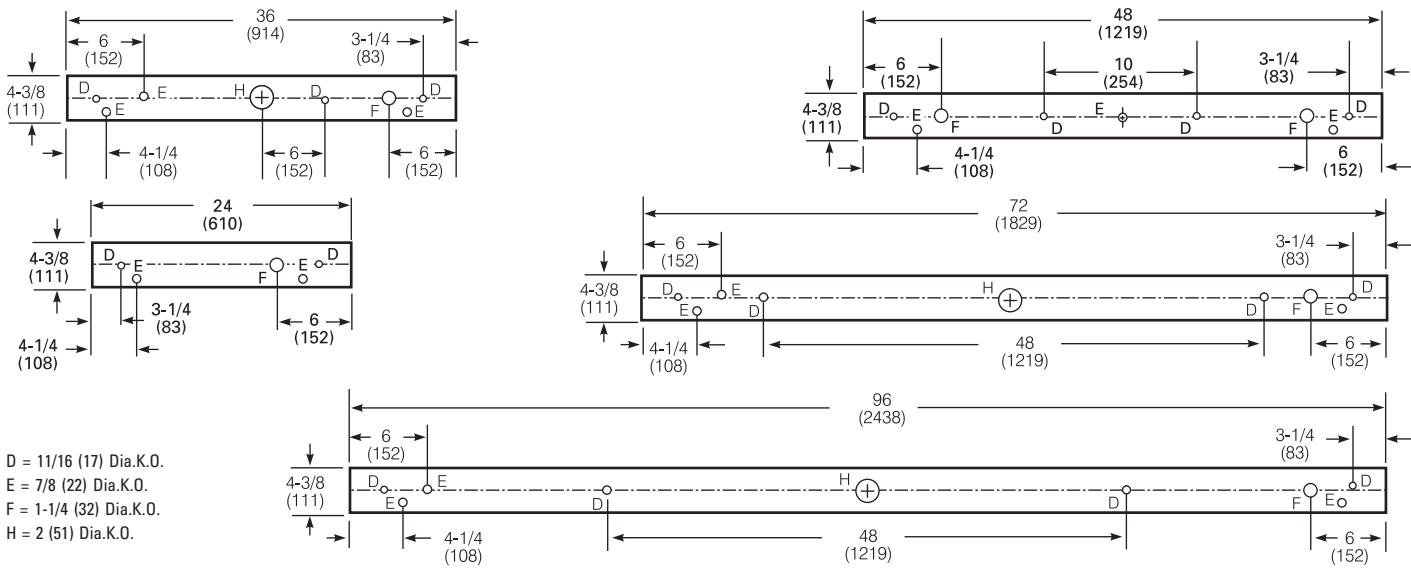
DIMENSIONS

Inches (millimeters). Subject to change without notice.
 48", 72" and 96" have only two 7/8" K.O.'s 6" from each end
 24" and 36" have only two 7/8" K.O.'s 3-1/4" from each end

SSTRIPS



CSTRIPS



PHOTOMETRICS

Calculated using the zonal cavity method in accordance with IESNA LM41 procedure. Floor reflectances are 20%. Lamp configurations shown are typical. All data based on 25°C. Full photometric data on these and other configurations available upon request.

S132 MV

Report LTL 5725

S/MH (along) 1.2 (across) 1.6

Coefficient of Utilization

Ceiling	80%			70%			50%		
	70%	50%	30%	70%	50%	30%	50%	30%	10%
1	97	91	86	92	87	82	79	75	72
2	87	77	70	82	74	67	67	61	56
3	78	67	58	74	64	56	58	52	46
4	71	59	50	67	56	48	51	44	38
5	65	51	42	61	49	41	45	37	32
10	43	30	22	41	28	21	26	20	15

Zonal Lumens Summary

Zone	Lumens	%Lamp	%Fixture
0-30	388	13.4	13.9
0-40	660	22.8	23.7
0-60	1307	45.1	46.9
0-90	2176	75.0	78.1
90-180	609	21.0	21.9
0-180	2786	96.1	100.0

C232 MV

TEST NO: LTL 5181

LUMENS PER LAMP: 2900

Coefficients of Utilization

ROR	pc	pw	Coefficients of Utilization								
			80%			70%			50%		
			50%	30%	10%	50%	30%	10%	50%	30%	10%
0	106	106	106	102	102	102	93	93	93		
1	89	84	79	85	80	76	78	74	71		
2	76	68	62	72	66	60	66	61	56		
3	65	57	50	62	55	49	57	51	45		
4	57	48	42	55	47	40	50	43	38		
5	51	42	35	48	40	34	44	37	32		
6	45	36	30	43	35	29	40	33	28		
7	41	32	26	39	31	25	36	29	24		
8	37	29	23	35	28	22	33	26	21		
9	34	26	20	32	25	20	30	23	19		
10	31	23	18	30	23	18	28	21	17		

Zonal Lumen Summary

Zone	Lumens	% Lamp	% Fixture
0° - 30°	842.1	14.5	15.6
0° - 40°	1435.8	24.8	26.7
0° - 60°	2810.1	48.4	52.2
0° - 90°	4362.5	75.2	81.0
90° - 180°	1021.0	17.6	19.0
0° - 180°	5383.6	92.8	100.0

C296

TEST NO: LTL 18310

LUMENS PER LAMP: 6300

Coefficients of Utilization

ROR	pc	pw	Coefficients of Utilization								
			80%			70%			50%		
			50%	30%	10%	50%	30%	10%	50%	30%	10%
0	103	103	103	98	98	98	90	90	90		
1	86	82	78	82	78	74	75	72	69		
2	74	67	61	70	64	59	64	59	55		
3	64	56	49	61	54	48	56	49	44		
4	56	47	41	53	46	40	49	42	37		
5	49	41	35	47	39	34	43	37	31		
6	44	36	30	42	34	29	39	32	27		
7	40	32	26	38	30	25	35	28	24		
8	36	28	23	35	27	22	32	25	21		
9	33	25	20	32	25	20	29	23	19		
10	30	23	18	29	22	18	27	21	17		

Zonal Lumen Summary

Zone	Lumens	% Lamp	% Fixture
0° - 30°	1785.8	14.2	15.7
0° - 40°	3042.4	24.1	26.8
0° - 60°	5944.0	47.2	52.3
0° - 90°	9027.5	71.6	79.4
90° - 180°	2341.8	18.6	20.6
0° - 180°	11369.4	90.2	100.0



An AcuityBrands Company