

FEATURES & SPECIFICATIONS

INTENDED USE — Low profile body and side-mounted lamps allow fixture to fit in shallow spaces.

CONSTRUCTION — Housing formed from cold-rolled steel.

Available in tandem-wired lengths.

2-lamp fixtures available in choice of "2L" or opposing lamp configuration.

Sturdy channel cover secured by captive quarter-turn latch for easy access to wireway.

Accepts plug-in options for 1, 2 or 3 primary circuits.

For unit or row installations, surface or suspended mounting.

Finish: High-gloss, baked white polyester finish. Five-stage iron-phosphate pretreatment ensures superior paint adhesion and rust resistance. Painted parts finished with high-gloss, baked white enamel.

ELECTRICAL — Fixture conforms to UL 1570 and is suitable for damp locations. AWM, TFN or THHN wire used throughout, rated for required temperatures.

Ballast: Thermally-protected, resetting, Class P, HPF, non-PCB, UL listed, CSA certified ballast is standard. Program start ballasts are sound rated A. Standard combinations are CBM approved and conform to UL 935.

LISTINGS — UL Listed (standard). Optional: Canada CSA or cUL. Mexico NOM. Listed for 25° C ambient temperature.

WARRANTY — 1-year limited warranty. Complete warranty terms located at www.acuitybrands.com/CustomerResources/Terms_and_conditions.aspx.

Note: Specifications subject to change without notice.

Actual performance may differ as a result of end-user environment and application.

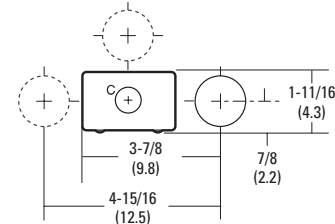
Catalog Number
Notes
Type

Side-Mounted Strip

SM



T5/T8
2', 3' or 4' Length
1, 2 or 3 Lamps



All dimensions are inches (centimeters) unless specified otherwise.

ORDERING INFORMATION

For shortest lead times, configure products using **bolded options**.

Example: SM 2 28T5 MVOLT GEB10PS

Series	Number of lamps	Lamp type	Voltage	Options
SM Side-mounted strip For tandem double-length unit, add prefix T. Example: TSM ¹	1	T8	120	GEB10IS Electronic ballast, ≤10% THD, instant start
	2	17 17W T8 (24")	277	GEB10PS Electronic ballast, ≤10% THD, programmed start
	2L ^{1,2}	25 25W T8 (36")	347 ³	S5 0.95 ballast factor SIMPLY5™ system ⁵
	3L ^{1,2}	32 32W T8 (48")	MVOLT⁴	S5115 1.15 ballast factor SIMPLY5™ system ⁵
	Not included	T5	Others available	GLR Internal fast-blow fuse ⁶
		14T5 14W T5 (22")		GMF Internal slow-blow fuse ⁶
		21T5 21W T5 (34")		PLR_ Plug-in wiring, specify 1, 2 or 3 branch circuits and hot wires (A=black, B=red, C=blue, AB or AC)
		28T5 28W T5 (46")		EL55 Emergency battery pack (nominal 390-700 lumens; consult factory for additional battery packs) ⁶
		HO		EL65 Emergency battery pack (nominal 725-1325 lumens) ⁶
		24T5HO 24W T5HO (22")		EL Emergency battery pack (nominal 300 lumens) ⁶
		39T5HO 39W T5HO (34")		CSA CSA Certified ⁷
		54T5HO 54W T5HO (46")		IR Mounting holes for asymmetric reflector ⁸
			2R Mounting holes for symmetric reflector ⁸	

Notes

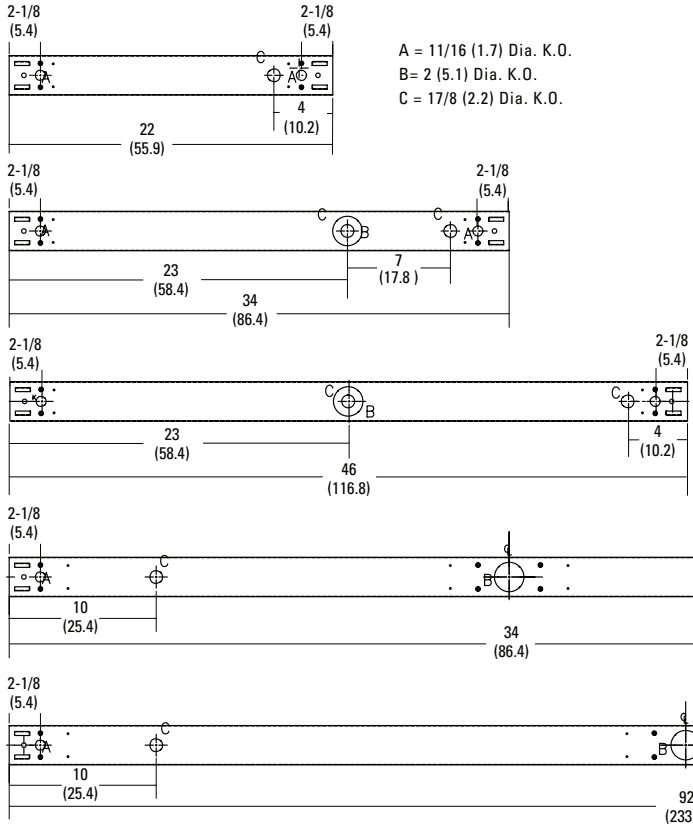
- TSM not available with 2L or 3-lamp option.
- Two lamps to form L-shaped fixture cross section.
- Only available with 28W and 54W.
- MVOLT (120-277V), 50-60HZ
- SIMPLY5 system includes a 13' S5SSC RELOC® wiring system. Specify voltage unless hardware (HW) or PWS is ordered.
- Specify voltage.
- 347V only.
- Specify IR (asymmetric) or 2R (symmetric) on fixture for mounting holes.

Accessories: Order as separate catalog number.	
SMASR48	Asymmetric reflector, 4' white (order 2 for symmetric reflector).

SM Side Mounted Strip

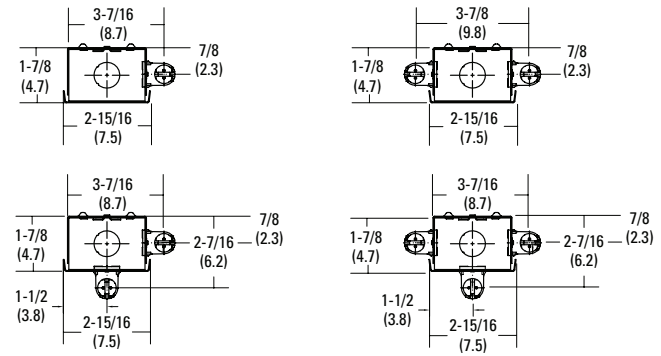
MOUNTING DATA

For unit or row installation, surface or stem mounting.
 Unit installation — Minimum of two hangers required.
 Row installation — Minimum of two hangers required.



DIMENSIONS

Inches (centimeters). Subject to change without notice.



PHOTOMETRICS

Calculated using the zonal cavity method in accordance with IESNA LM41 procedure. Floor reflectances are 20%. Lamp configurations shown are typical. Full photometric data on these and other configurations available upon request.

TEST NO: LTL17893
 LUMINAIRE CATALOG NO.: SM 1 28T5 MOVLT GEB10PS
 LUMENS PER LAMP: 2600

TEST NO: LTL17834
 LUMINAIRE CATALOG NO.: SM 2 28T5 MVOLT GEB10PS
 LUMENS PER LAMP: 2600

RCR	pf	Coefficients of Utilization									
		pc	20%								
			80%			70%			50%		
			50%	30%	10%	50%	30%	10%	50%	30%	10%
0	98	98	98	90	90	90	76	76	76		
1	82	78	74	76	72	68	63	60	57		
2	71	64	59	65	59	54	54	50	46		
3	62	54	48	57	50	45	47	42	38		
4	54	46	40	50	43	38	42	36	32		
5	48	40	34	44	37	32	37	32	27		
6	43	35	30	40	33	28	33	28	24		
7	39	31	26	36	29	24	30	25	21		
8	35	28	23	33	26	21	27	22	18		
9	32	25	20	30	23	19	25	20	16		
10	29	23	18	27	21	17	23	18	15		

RCR	pf	Coefficients of Utilization									
		pc	20%								
			80%			70%			50%		
			50%	30%	10%	50%	30%	10%	50%	30%	10%
0	95	95	95	88	88	88	74	74	74		
1	79	75	71	73	69	66	61	58	56		
2	68	62	57	63	57	53	52	48	45		
3	59	52	46	55	48	43	46	41	37		
4	52	45	39	48	41	36	40	35	31		
5	46	39	33	43	36	31	36	30	26		
6	42	34	28	38	31	27	32	27	23		
7	37	30	25	35	28	23	29	24	20		
8	34	27	22	31	25	20	27	21	18		
9	31	24	19	29	22	18	24	19	16		
10	28	22	17	26	20	16	22	18	14		

Zonal Lumen Summary			
Zone	Lumens	% Lamp	% Fixture
0° - 30°	248.3	9.6	10.4
0° - 40°	404.1	15.5	16.9
0° - 60°	718.6	27.6	30.1
0° - 90°	1149.0	44.2	48.1
90° - 180°	1240.2	47.7	51.9
0° - 180°	2389.2	91.9	100.0

Zonal Lumen Summary			
Zone	Lumens	% Lamp	% Fixture
0° - 30°	485.9	9.3	10.5
0° - 40°	785.2	15.1	17.0
0° - 60°	1406.3	27.0	30.5
0° - 90°	2282.8	43.9	49.5
90° - 180°	2332.0	44.8	50.5
0° - 180°	4614.8	88.7	100.0