

L
LA

Intended Use

For mounting heights up to 16' requiring low to medium light levels. Ideal for light-duty areas, utility, storage rooms or retail.

Features

Solid top reflector or 8% uplight is available. Sturdy combination reflector and channel cover secured by captive quarter-turn latch for easy access to wireway. Combination endplate/channel connector supplied with each fixture. High-gloss backed white enamel finish. Available in tandem wired lengths. Accepts plug-ins for 1, 2 or 3 primary circuits.

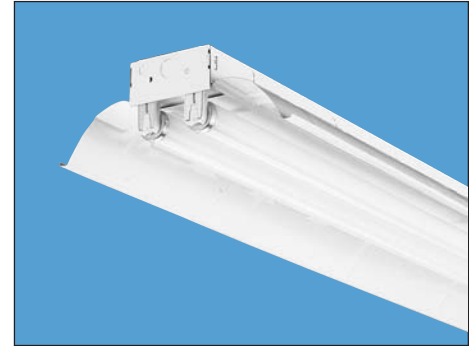
Ballast – Thermally-protected, resetting, Class P, HPF, non-PCB, UL Listed, CSA Certified ballast is standard. Sound rating depends on lamp/ballast combination.

Wiring & Electrical – AWM, TFN or THHN wire used throughout, rated for required temperatures.

Mounting – For unit or row installations, surface or suspended mounting.

Listings

UL Listed (standard) and CSA Certified (standard; except for 347V – see Options). NOM Certified (see Options).



Ordering Information

Example: **L 2 32 MVOLT GEB10IS**

Series	Number of lamps	Lamp type	Voltage	Options/accessories
L Solid reflector	1	17 17W T8 (24")	MVOLT	1/4 One 4-lamp ballast
LA 8% uplight	2	32 32W T8 (48")	347	GEB10IS T8 electronic ballast, instant start
For tandem double-length unit, add prefix T . Example: TL ¹	Not included.	96T8 59W T8 slimline (96")		CSA CSA Certified (347V only)
		96T8HO 86W T8 380mA (96")		NOM NOM Certified

See page 113 for others.

NOTES:
1 For detailed mounting information consult the product specification sheets.

Availability and Dimensions						
Series	Lamps per cross section	Lamps per fixture	Lamp type	Width ¹ in.(cm)	Depth ¹ in.(cm)	Length ¹ in.(cm)
L, LA	1	1	17	12 (30.5)	4 (10.2)	24 (61.0)
	2	2	17	12 (30.5)	4 (10.2)	24 (61.0)
L, LA	1	1	32	12 (30.5)	4 (10.2)	48 (121.9)
	2	2	32	12 (30.5)	4 (10.2)	48 (121.9)
TL, TLA	1	2	32	12 (30.5)	4 (10.2)	96 (243.8)
	2	4	32	12 (30.5)	4 (10.2)	96 (243.8)
L, LA	1	1	96T8, 96T8HO	12 (30.5)	4 (10.2)	96 (243.8)
	2	2	96T8, 96T8HO	12 (30.5)	4 (10.2)	96 (243.8)