

## FEATURES & SPECIFICATIONS

**INTENDED USE** — For wall or ceiling mounting - vertical or horizontal. Ideal for stairwells, corridors, lavatories or any utility application. **Certain airborne contaminants can diminish integrity of acrylic.** [Click here for Acrylic Environmental Compatibility table for suitable uses.](#)

**CONSTRUCTION** — Easy maintenance design for individual or tandem mounting. For row mounting, order RMT option.

Heavy-duty code grade steel. Metal parts are die-formed.

Finish: Five-stage iron-phosphate pretreatment ensures superior paint adhesion and rust resistance. Standard finish is high-gloss, high reflectivity, baked white polyester (architectural black available).

**OPTICS** — Available with high performance A12 pattern clear acrylic or low brightness matte white opal acrylic. Front metal fascia eliminates direct illumination. Provides up/down distribution.

**ELECTRICAL** — AWM, TFN or THHN wire used throughout, rated for required temperatures. UL/CSA Listed ballast disconnect with strain relief and leads provided standard.

**INSTALLATION** — End caps spring-loaded for easy diffuser removal.

**LISTINGS** — UL Listed to US and Canadian safety standards. Optional: Mexico NOM.

**WARRANTY** — 1-year limited warranty. Complete warranty terms located at [www.acuitybrands.com/CustomerResources/Terms\\_and\\_conditions.aspx](http://www.acuitybrands.com/CustomerResources/Terms_and_conditions.aspx)

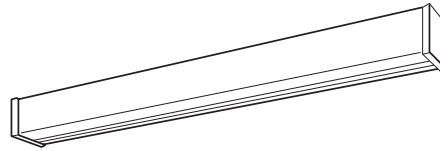
Note: Specifications subject to change without notice.

Catalog Number
Notes
Type

### Commercial Wall Bracket

# WC

**T5 and T8**  
2', 3' or 4' Lengths  
1 or 2 Lamps



#### Specifications

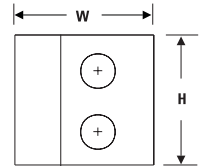
Length: 24 (609), 36 (914) or 48 (1218)

Width: 4-5/8 (118)

Depth: 4-9/16 (116)

Weight: 14 lbs (6.3 kg)

All dimensions are inches (millimeters) unless otherwise indicated.



#### ORDERING INFORMATION

For shortest lead times, configure product using **standard options (shown in bold)**.

**Example:** WC 2 32 120 MVOLT GEB10IS

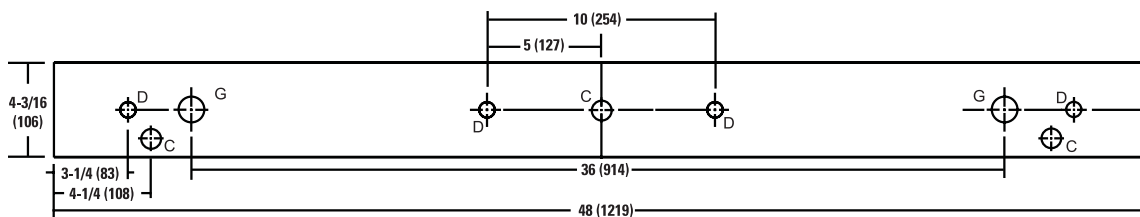
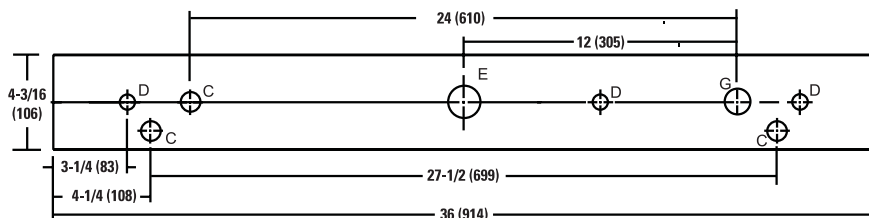
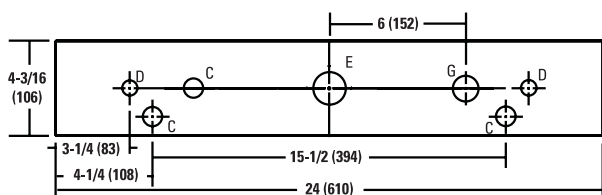
WC	Series	Number of lamps	Lamp type	Diffuser type	Voltage	Options	
WC	All purpose wall bracket	1	17 17W T8 (24")	<b>(blank)</b> Matte white opal acrylic	120	CO Grounded convenience outlet, 120V only (bottom right) <sup>2</sup>	
			25 25W T8 (36")	A12 #12 pattern acrylic	277	S1 Pull-chain switch; installed bottom left; on/off operation of all lamps only (120V only) <sup>2</sup>	
		2	<b>32</b> 32W T8 (48")	FAC Matte white opal acrylic with front metal fascia	347	<b>MVOLT</b> Others available.	<b>GEB10IS</b> Electronic ballast, ≤ 10% THD, instant-start
			14 14W T5 (24") <sup>1</sup>	FA12 #12 pattern acrylic with front metal fascia	21 21W T5 (36") <sup>1</sup>		GEB10PS Electronic ballasts, ≤ 10% THD, program-start
			28 28W T5 (48") <sup>1</sup>		24 24W T5HO (24") <sup>1</sup>		MB Architectural black finish
			39 39W T5HO (36") <sup>1</sup>		54 54W T5HO (48") <sup>1</sup>		RMT Row mount <sup>3</sup>
							CSA CSA Certified.

#### Notes

- All T5 lamp types use GEB10PS ballast only.
- For optional locations, consult factory.
- Includes continuous row joiner band. Not available with CSA; models requiring CSA labeling ship standard with joiner band.

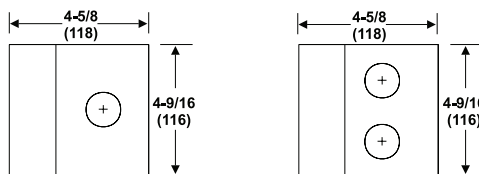
# WC Wall Bracket, All Purpose

## MOUNTING DATA



## DIMENSIONS

All dimensions are inches (millimeters) unless otherwise indicated.



- C = 7/8 (22) Dia. K.O.
- D = 11/16 (18) Dia. K.O.
- E = 2(51) Dia. K.O.
- G = 1-1/8 (29) Dia. K.O.

## PHOTOMETRICS

Calculated using the zonal cavity method in accordance with IESNA LM41 procedure. Vertical and horizontal illuminance is calculated with fixture mounting 7' above floor. Reflectances 80/50/20%. Full photometric data available upon request.

### WC 2 32

### Report LTL 5736

### Initial point illuminance on wall and horizontal work surface (fc)

X and Y coordinates are on 12" centers.

	X	A	B	C	D	E	F	G	H	I	J	K	
Vert.	9	3	4	6	11	15	16	15	11	6	4	4	
	8	3	4	6	18	31	33	31	18	6	4	3	
	7	2	3	3				3	3	2	2	2	
	6	2	3	5	16	28	30	28	16	5	3	2	
	5	2	2	4	6	8	9	8	6	4	3	2	
	4	2	2	3	3	4	4	4	4	3	2	2	
	3	2	2	2	3	3	3	3	3	2	2	2	
	2	1	2	2	2	2	2	2	2	2	2	1	
	1	1	2	2	2	2	2	2	2	2	2	1	
	Horiz.	1	6	7	8	9	10	10	10	9	8	6	5
		2	6	7	8	10	11	11	11	10	9	7	6
		3	6	7	8	10	11	11	11	10	9	7	7
		4	7	7	8	10	11	11	11	10	9	8	7
5		6	7	8	9	10	10	10	9	9	7	7	
6		6	7	7	9	9	9	9	9	8	7	6	
7		5	6	6	7	7	7	7	7	7	6	5	
8		5	5	6	6	7	7	7	6	6	5	5	
9		5	5	5	6	6	6	6	6	6	5	5	
10		4	4	4	4	5	5	5	4	4	4	4	
11		3	3	4	4	4	4	4	4	4	3	3	
12		3	3	3	4	4	4	4	4	4	3	3	
13		2	2	3	3	3	3	3	3	3	2	2	

