

PRODUCT INFORMATION

Intended Use

Recessed incandescent housings for 2x8 new construction (L5) or remodel construction (LSR). Approved for direct burial in insulation and all ceiling and wiring types.

Construction

L5: Air-tight, galvanized steel pan with aluminum can and junction box with four built-in ROMEX® clamps and

ground wire. Rated for 90°C. Factory-installed captive bar hangers that span up to 24 o.c. and feature stepped shank nail with integral T-bar locks. Two locking screws hold fixture position. Socket clips to trim to ensure proper and consistent lamp position.

LSR: Air-tight aluminum housing with heavy-gauge galvanized steel raceway arm. Remodel clips for installation in existing plaster, sheet

rock or mechanical ceilings. Galvanized steel junction box with three built-in ROMEX® clamps and ground wire. Not suitable for pulling wires. Rated for 90°C. Socket clips to trim to ensure proper and consistent lamp position.

Trim retention (clips): Retaining clips riveted to top of reflector hold trim inside housing.

Trim retention (TOR): Two side-mounted torsion springs on the trim and two receiving brackets in the can, ensure a consistently tight fit with the ceiling.

Suitable for ceilings up to 1-1/2" thick.

Listings

UL Listed to U.S. and Canadian safety standards.

**L5
LSR**



ORDERING INFORMATION

For shortest lead times, configure products using **bolded options**.

Example: L5 5B2W TOR

Series	Reflector	Options
L5 LSR Housings sold in resale packs of six (R6).	Choose reflector below. Torsion springs will be denigrated with a TOR in the nomenclature. Riveted clips will have no designator. Housing and reflector may be ordered separately.	PHC Poke-home wire connectors.

IC Rated Full Reflectors: All reflectors are damp location listed. Lensed and WETlite™ reflectors are wet location listed. These IC trims also can be used in Non-IC applications when using lamps and wattages listed below. White flange standard, except as noted.

Open wide flange	Open narrow flange	Shallow baffle	Deep baffle	Eyeball
501 TOR White 501BN TOR Brushed nickel ¹ 501ORB TOR Oil-rubbed bronze ¹ 501BZA TOR Antique bronze ¹ IC 50 R20 65 BR40 75 PAR30	502 TOR White 502A Clear diffuse 502AZ Clear specular 502BLZ Black specular IC 50 R20 65 BR40 60 PAR38 (Anodized) 75PAR30 (short neck)	5B1 TOR Black 5B1W TOR White IC 50 R20 50 PAR20 75 PAR30 (short neck)	5B2 TOR Black 5B2W TOR White 5B2BN TOR Brushed nickel ¹ 5B2ORB TOR Oil-rubbed bronze ¹ 5B2BZA TOR Antique bronze ¹ IC 50 R20 65 BR30 50PAR30 60 PAR38	5E1 White 5E1BN Brushed nickel ¹ 5E1ORB Oil-rubbed bronze ¹ 5E1BZA Antique bronze ¹ IC 50 R20 65 BR30 50 PAR20 75 PAR30 (long neck)
Polycarbonate lens 5LD1 Drop opal IC 40 A19	WETlite™ 5H2O TOR White 5H2OBN TOR Brushed nickel ¹ 5H2OORB TOR Oil-rubbed bronze ¹ 5H2OBZA TOR Antique bronze ¹ IC 75 PAR38 (lamp included)			

ADDITIONAL INFORMATION

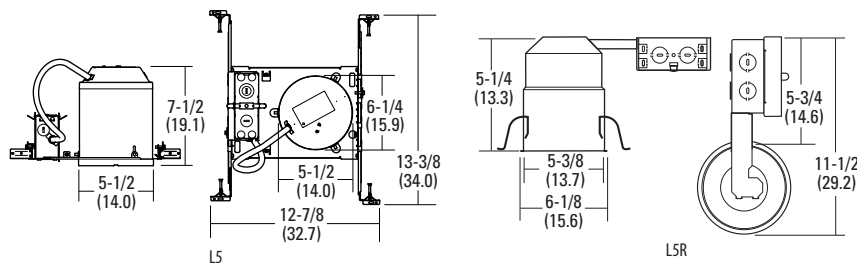
For additional product information, visit www.lithonia.com.

ACCESSORIES

ORDER SEPARATELY

CTR5	5" goof ring, white
ATK5 R6	5" air-tight trim kit

Drawings are for dimensional detail only and may not represent actual mechanical configuration. Dimensions are shown in inches (centimeters) unless otherwise noted.



Notes

1 Flange matches trim finish. Please consult www.lithonia.com for a full listing of Contractor Select products.