

FEATURES & SPECIFICATIONS

INTENDED USE

Static T8 fixtures provide general illumination for recessed applications; ideal for restricted plenum spaces.

ATTRIBUTES

Designed exclusively for use with T8 lamps, electronic ballasts and sockets.

CONSTRUCTION

Smooth hemmed sides and smooth, inward formed end flanges for safe handling. Lighter weight fixture allows safe, easy installation.

Standard steel door frame has superior structural integrity with premium extruded appearance and precision flush mitered corners. Powder-painted, steel latches provide easy, secure door closure.

Superior mechanical light seal requires no foam gasketing. Integral T-bar clips secure fixture to T-bar system. Housing formed from cold-rolled steel. Acrylic shielding material 100% UV stabilized. No asbestos is used in this product.

FINISH

Five-stage iron-phosphate pretreatment ensures superior paint adhesion and rust resistance. Painted parts finished with high-gloss, baked white enamel.

OPTICAL

Broad range of lens options available.

ELECTRICAL SYSTEM

Standard ballast is electronic, thermally protected, resetting, Class P, HPF, non-PCB, UL Listed, CSA certified ballast, universal voltage and sound rated A.

Luminaire is suitable for damp locations. AWM, TFN or THHN wire used throughout, rated for required temperatures.

LISTING

Standard: UL. Optional: Canada — CSA or cUL; Mexico — NOM.

WARRANTY

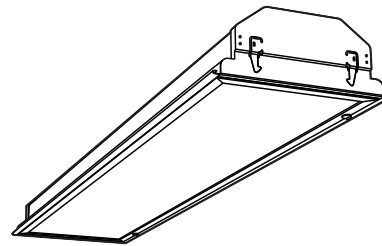
Guaranteed for one year against mechanical defects in manufacture.

Specifications subject to change without notice.

Catalog Number	
Notes	Type

Static Troffer

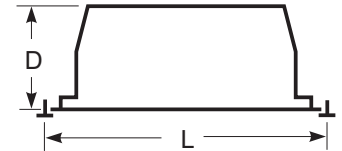
GT8 1'x4'



1, 2 or 3 Lamps

Specifications

Length: 48 (1218)
 Width: 12 (305)
 Depth: 4-1/2 (114)
 Weight: 17 lbs (7.7 kg)



All dimensions are inches (millimeters).

ORDERING INFORMATION

For shortest lead times, configure product using **standard options (shown in bold)**.

Example: GT8 2 32 A12 MVOLT GEB10IS

GT8		32		Door frame		Volts		Options ¹	
Series		Number of lamps		(blank) Flush steel		120		1/3 One three-lamp ballast	
GT8 1' wide		1		FN Flush aluminum, natural		277		GEB10IS Electronic ballast, <10% THD, instant start	
		2		FM Flush aluminum, matte black		347		GEB10RS Electronic ballast, <10% THD, rapid start	
		3		FW Flush aluminum, white		MVOLT		EL Emergency battery pack (nominal 300 lumens)	
		Not included.		RN Regressed aluminum, natural		Others available.		EL14 Emergency battery pack (nominal 1400 lumens)	
Trim type		Lamp type		RM Regressed aluminum, matte black				GLR Internal fast-blow fuse	
(blank) Grid		32 32W T8 (48")		RW Regressed aluminum, white				GMF Internal slow-blow fuse	
F Overlapping flanged								PWS1836 6' prewire, 3/8" dia., 18-gauge, 1 circuit	
				Diffuser type					
				A12 #12 pattern acrylic					
				A12125 #12 pattern acrylic, 0.125" thick					
				A19 #19 pattern acrylic, 0.156" thick					
				A15 #15 pattern acrylic, 0.2" thick					
				PC1S 1/2" x 1/2" x 1/2" plastic cube louver, silver					
				PC2S 1-1/2" x 1-1/2" x 1" plastic cube louver, silver					
				PC3S 3/4" x 3/4" x 1/2" plastic cube louver, silver					
						LP__ Lamped, specify lamp type and color			
						LP735 Lamped, 700-series, 3500K			
						PAF Painted after fabrication (white enamel)			
						SSR Specular silver interior finish (95% reflective)			
						CRE Flanged trim for continuous row mounting (end)			
						CRM Flanged trim for continuous row mounting (middle)			
						JP Palletized and stretch-wrapped without individual cartons; grid trim only.			
						CSA CSA Certified			
						NOM NOM Certified			

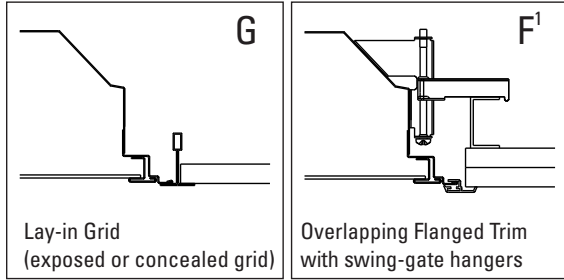
NOTE:

1 MVOLT standard for 120-277V applications, 50-60 hz operation. Some options require voltage specified.

GT8 1'x4' Static Troffer

MOUNTING DATA

Continuous row mounting of flanged units requires CRE and CRM trim options (see Options).

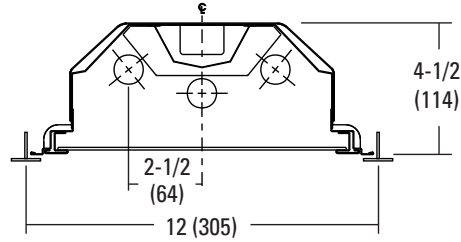
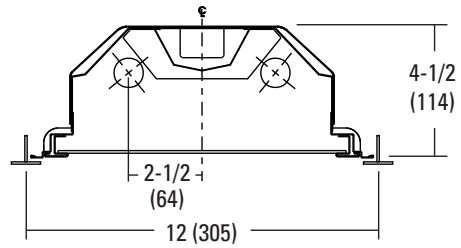


NOTE:

1 Recommended rough-in dimensions for F trim fixtures 12"x48" (Tolerance is +1/4", -0").
Swing-gate range 1-9/16" to 3-3/4", span 10-3/4" to 14-3/4".

DIMENSIONS

Inches (millimeters). Subject to change without notice.



PHOTOMETRICS

Calculated using the zonal cavity method in accordance with IESNA LM41 procedure. Floor reflectances are 20%. Lamp configurations shown are typical. Full photometric data on these and other configurations available upon request.

GT8 2 32 A12

Report: **LTL12536**

LUMENS PER LAMP: **2850**

Luminaire Efficiency: **77.7%**

Coefficients of Utilization

RCR	pf	20%								
		80%			50%			30%		
		pc	pw		pc	pw		pc	pw	
0	92	92	92	86	86	86	83	83	83	
1	85	82	79	77	74	72	74	72	70	
2	78	72	67	68	64	61	66	63	60	
3	72	64	58	61	56	52	59	55	51	
4	66	58	51	55	50	45	53	48	45	
5	61	52	45	49	44	40	48	43	39	
6	57	47	40	45	39	35	44	39	35	
7	53	43	36	41	36	32	40	35	31	
8	49	39	33	38	32	28	37	32	28	
9	46	36	30	35	30	26	34	29	26	
10	43	33	28	32	27	24	32	27	23	

Zonal Lumen Summary

Zone	Lumens	% Lamp	% Fixture
0° - 30°	1471	25.8	33.2
0° - 40°	2347	41.2	53.0
0° - 60°	3777	66.3	85.3
0° - 90°	4426	77.7	100.0
90° - 180°	0	0.0	0.0
0° - 180°	4426	77.7	100.0



An AcuityBrands Company