



## FEATURES & SPECIFICATIONS

### INTENDED USE

Intended for unit or row installations, surface or suspended mounting.

### ATTRIBUTES

Designed exclusively for use with T8 lamps, electronic ballasts and sockets.

### CONSTRUCTION

Constructed to comply with New York City electric code. Made in USA.

Standard channel, die formed steel.

Sturdy Channel cover secured by captive quarter turnlatch for easy access to wireway.

End plate and channel connector furnished with each fixture.

Housing formed from Cold rolled steel.

### FINISH

Five Stage iron-phosphate pretreatment ensures superior paint adhesion and rust resistance.

Painted parts finished with high-gloss, baked white polyester.

### ELECTRICAL SYSTEM

Thermally-protected, resetting, Class P, UL Listed, CSA Certified ballast is standard.

Available in Tandem wired lengths.

Luminaire is suitable for damp locations. AWM, TFN or THHN wire used throughout, rated for required temperatures.

### LISTING

UL Listed.

### WARRANTY

Guaranteed for one year against mechanical defects in manufacture.

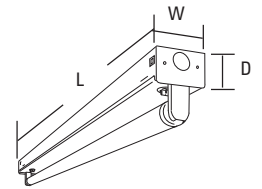
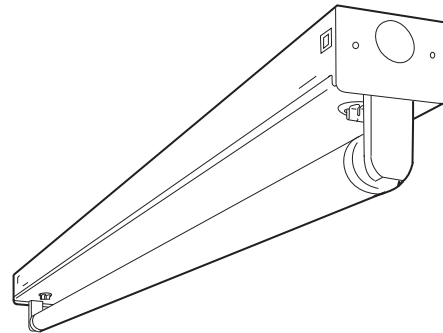
NOTE: Specifications subject to change without notice.

Catalog Number	
Notes	Type

Standard Strip

# S NY

**T8**  
1 Lamp



### Specifications

Length: 18 (457), 24 (610)

36 (914), 48 (1219)

72 (1829) or 96 (2438)

Width: 2-3/4 (70)

Depth: 1-3/4 (45)

All dimensions are inches (millimeters).

## ORDERING INFORMATION

For shortest lead times, configure product using **standard options (shown in bold)**.

Example: S 1 32 MVOLT GEB10IS NY

S	1			
Series	Number of lamps	Lamp type	Voltage	Options
<b>S Standard strip<sup>1</sup></b>	<b>1</b> Not included	17 17W T8 (24") 25 25W T8 (36") <b>32 32W T8 (48")</b>	<b>MVOLT</b> Others available	<b>GEB10IS T8 electronic ballast, ≤ 10% THD, instant start (T8 only)</b>  EL <b>NYC I.B.E.W. union made, NYC code compliant</b> NY3 I.B.E.W. Local 3 union made

<sup>1</sup>For tandem double-length unit, add prefix T. Example: TS

### Accessories

Order as separate catalog numbers.

SQ\_ Swivel-stem hanger (specify length in 2" increments).

1B Ceiling spacer (adjusts from 1-1/2" to 2-1/2" from ceiling).

WGS Wireguard, 4' white, for unshielded S strip.<sup>1</sup>

WGSSMR Wireguard, 4' white, for S strip with SSMR reflector.<sup>1</sup>

WGSASR Wireguard, 4' white, for S strip with SASR reflector.<sup>1</sup>

SSMR 48WH Symmetric reflector, 4' white.<sup>1</sup>

SASR 48WH Asymmetric reflector, 4' white.<sup>1</sup>

S48WG Wireguard, 4' white, Canada only

SSMRCF 24WH Symmetric reflector, 2' white.\*

SASRCF 24WH Asymmetric reflector, 2' white.\*

TSASRCF 24WH Asymmetric reflector, 2' white, for TS 1 CF18.\*

\*Other lengths available. Replace **24** in catalog number with length in inches. Other finishes available. Replace **WH** in catalog number with **SSR** or other finish.

NOTES:

1 Order two for 8' fixtures.

# S NY Strip

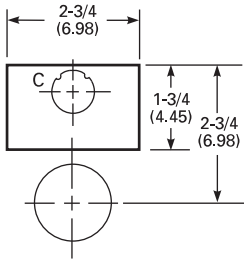
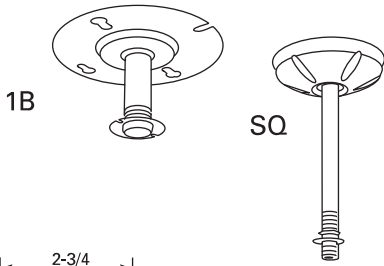
## MOUNTING DATA

For unit or row installation, surface or stem mounting.

Unit installation — Minimum of two hangers required.

Row installation — One hanger per channel plus one per row required.

See ACCESSORIES below for hanging devices.

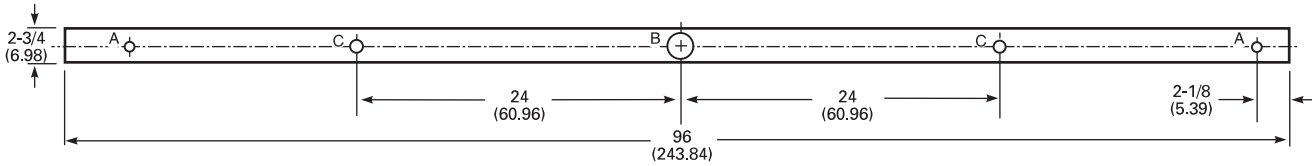
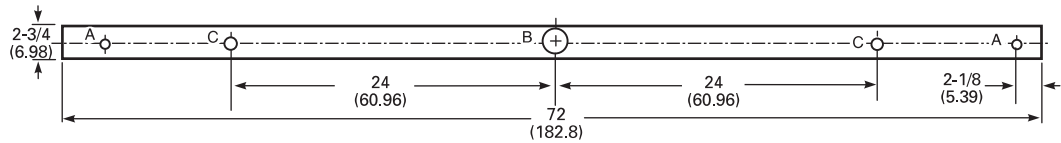
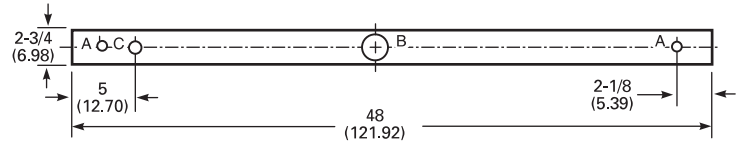
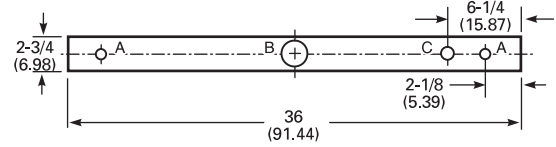
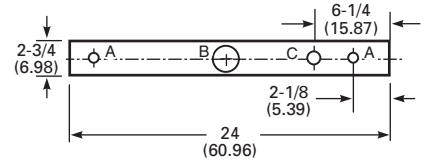


A = 11/16 (1.74) Dia. K.O.

B = 2 (5.08) Dia. K.O.

C = 7/8 (2.22) Dia. K.O.

## DIMENSIONS



## PHOTOMETRICS

Calculated using the zonal cavity method in accordance with IESNA LM41 procedure. Floor reflectances are 20%. Lamp configurations shown are typical. Full photometric data on these and other configurations available upon request.

### S 132

Report LTL 5725

S/MH (along) 1.2 (across) 1.6

#### Coefficient of Utilization

Wall	80%			70%			50%		
	70%	50%	30%	70%	50%	30%	50%	30%	10%
1	97	91	86	92	87	82	79	75	72
2	87	77	70	82	74	67	67	61	56
3	78	67	58	74	64	56	58	52	46
4	71	59	50	67	56	48	51	44	38
5	65	51	42	61	49	41	45	37	32
10	43	30	22	41	28	21	26	20	15

#### Zonal Lumens Summary

Zone	Lumens	%Lamp	%Fixture
0-30	388	13.4	13.9
0-40	660	22.8	23.7
0-60	1307	45.1	46.9
0-90	2176	75.0	78.1
90-180	609	21.0	21.9
0-180	2786	96.1	100.0

#### Energy (Calculated in accordance with NEMA standard LE-5)

LER.FL	ANNUAL ENERGY COST*	LAMP DESCRIPTION	LAMP LUMENS	BALLAST FACTOR	INPUT WATTS
94.7	\$2.53	(1) F3278/735	2800	.88	25

\* Comparative yearly lighting energy cost per 1000 lumens



Lithonia Lighting

Fluorescent

One Lithonia Way, Conyers, GA 30012

Phone: 800-858-7763

www.lithonia.com