

FEATURES & SPECIFICATIONS

INTENDED USE — Static T8 fixtures provide general illumination for recessed applications; idea for restricted plenum spaces.

ATTRIBUTES — Designed exclusively for use with T8 lamps, electronic ballasts and sockets.

CONSTRUCTION — Smooth hemmed sides and smooth, inward formed end flanges for safe handling. Lighter weight fixture allows for safe, easy installation.

Standard steel door frame has superior structural integrity with premium extruded appearance and precision flush mitered corners. Powder painted, steel latches provide easy, secure door closure.

Superior mechanical light seal requires no foam gasketing. Integral T-bar clips secure fixture to T-bar system. Housing formed from cold-rolled steel. Acrylic shielding material 100% UV stabilized. No asbestos is used in this product.

FINISH — Five-stage iron-phosphate pretreatment ensures superior paint adhesion and rust resistance. Painted parts finished with high-gloss, baked white enamel.

OPTICAL — Broad range of lens options available.

ELECTRICAL — Standard ballast is electronic, thermally protected, resetting, Class P, HPF, non-PCB, UL Listed, CSA certified ballast, universal voltage and sound rated A.

Luminaire is suitable for damp locations. AWM, TFN or THHN wire used throughout, rated for required temperatures.

LISTING — Standard: UL. Optional: Canada — CSA or cUL; Mexico — NOM.

WARRANTY — 1-year limited warranty. Complete warranty terms located at www.acuitybrands.com/CustomerResources/Terms_and_conditions.aspx
US patents: 6,210,025; 6,231,213; 2,288,471.

Actual performance may differ as a result of end-user environment and application.

Note: Actual performance may differ as a result of end-user environment and application.

Specifications subject to change without notice.

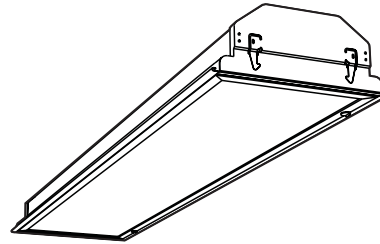
| |
|----------------|
| Catalog Number |
| Notes |
| Type |

Static Troffer



GT8 1'x4'

1, 2 or 3 Lamps



Specifications

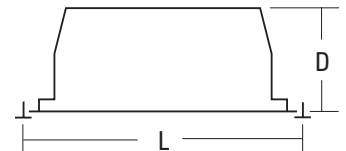
Length: 48 (121.8)

Width: 12 (30.5)

Depth: 4-1/2 (11.4)

Weight: 17 lbs (7.7 kg)

All dimensions are inches (centimeters).



ORDERING INFORMATION

For shortest lead times, configure products using **bolded options**.

Example: GT8 2 32 A12 MVOLT GEB10IS

| GT8 | | | | | | | |
|------------|---|-----------------------------|------------------------|-------------------------------------|--|---|---|
| Series | Trim type | Number of lamps | Lamp type | Door frame | Diffuser type | Voltage | Options |
| GT8 | 1' wide (blank) Grid F Overlapping flanged | 1 2 3 Not included | 32 32W T8 (48") | (blank) Flush steel, white | A12 #12 pattern acrylic | 120 277 347 MVOLT² Others available | 1/3 One 3-lamp ballast GEB10IS Electronic ballast, <10% THD, instant start GEB10RS Electronic ballast, <10% THD, rapid start EL Emergency battery pack (nominal 500 lumens) EL14 Emergency battery pack (nominal 1400 lumens) GLR Internal fast-blow fuse ³ GMF Internal slow-blow fuse ³ LST Tandem-wired fixture pairs (shared ballasts) PWS1836 6' prewire, 3/8" dia., 18-gauge, 1 circuit LP_ Lamped, specify lamp type and color PAF Painted after fabrication (white enamel) SSR Specular silver interior finish (95% reflective) CRE Flanged trim for continuous row mounting (end) CRM Flanged trim for continuous row mounting (middle) JP Palletized and stretch-wrapped without individual cartons; grid trim only CSA CSA Certified NOM NOM Certified |
| | | | | FN Flush aluminum, natural | A12125 #12 pattern acrylic, .125" thick | | |
| | | | | FM Flush aluminum, matte black | A19 #19 pattern acrylic, .156" thick | | |
| | | | | FW Flush aluminum, white | A15 #15 pattern acrylic, .2" thick | | |
| | | | | RN Regressed aluminum, natural | PC15 1/2" x 1/2" x 1/2" plastic cube louver, silver | | |
| | | | | RW Regressed aluminum, white | PC25 1-1/2" x 1-1/2" x 1" plastic cube louver, silver w/ flange ¹ | | |
| | | | | | PC35 3/4" x 3/4" x 1/2" plastic cube louver, silver | | |

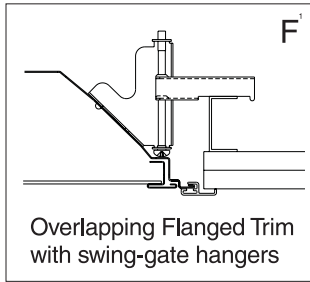
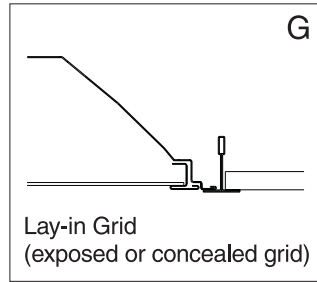
NOTES:

- Available with flush door frames only.
- MVOLT standard for 120-277V applications, 50-60hz operations require voltage specified.
- Must specify voltage 120 or 277.

GT8 1'x4' Static Troffer

MOUNTING DATA

Continuous row mounting of flanged units requires CRE and CRM trim options (see Options).

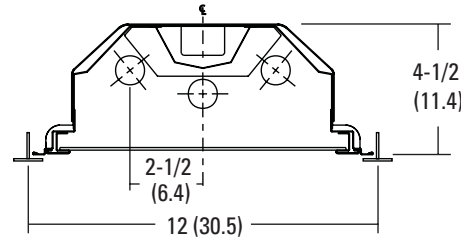
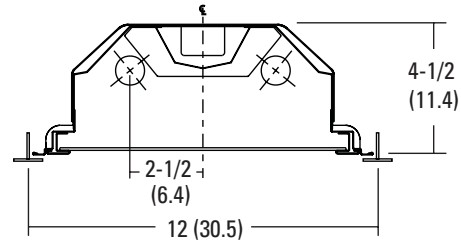


NOTE:

1 Recommended rough-in dimensions for F-trim fixtures 12"x48" (Tolerance is +1/4"-0"). Swing-gate range 1-9/16" to 3-3/4". Swing-gate span 10-3/4" to 14-3/4".

DIMENSIONS

All dimensions are inches (centimeters) unless otherwise indicated.



PHOTOMETRICS

Calculated using the zonal cavity method in accordance with IESNA LM41 procedure. Floor reflectances are 20%. Lamp configurations shown are typical. Full photometric data on these and other configurations available upon request.

GT8 2 32 A12

Report: **LTL12536**

LUMENS PER LAMP: **2850**

Luminaire Efficiency: **77.7%**

Coefficients of Utilization

| RCR | pw | Coefficients of Utilization | | | | | | | | | |
|-----|----|-----------------------------|-----|-----|-----|-----|-----|-----|-----|-----|--|
| | | 80% | | 20% | | | | 30% | | | |
| | | 70% | 50% | 30% | 50% | 30% | 10% | 50% | 30% | 10% | |
| 0 | 92 | 92 | 92 | 86 | 86 | 86 | 86 | 83 | 83 | 83 | |
| 1 | 85 | 82 | 79 | 77 | 74 | 72 | 74 | 72 | 70 | 70 | |
| 2 | 78 | 72 | 67 | 68 | 64 | 61 | 66 | 63 | 60 | 60 | |
| 3 | 72 | 64 | 58 | 61 | 56 | 52 | 59 | 55 | 51 | 51 | |
| 4 | 66 | 58 | 51 | 55 | 50 | 45 | 53 | 48 | 45 | 45 | |
| 5 | 61 | 52 | 45 | 49 | 44 | 40 | 48 | 43 | 39 | 39 | |
| 6 | 57 | 47 | 40 | 45 | 39 | 35 | 44 | 39 | 35 | 35 | |
| 7 | 53 | 43 | 36 | 41 | 36 | 32 | 40 | 35 | 31 | 31 | |
| 8 | 49 | 39 | 33 | 38 | 32 | 28 | 37 | 32 | 28 | 28 | |
| 9 | 46 | 36 | 30 | 35 | 30 | 26 | 34 | 29 | 26 | 26 | |
| 10 | 43 | 33 | 28 | 32 | 27 | 24 | 32 | 27 | 23 | 23 | |

Zonal Lumen Summary

| Zone | Lumens | % Lamp | % Fixture |
|------------|--------|--------|-----------|
| 0° - 30° | 1471 | 25.8 | 33.2 |
| 0° - 40° | 2347 | 41.2 | 53.0 |
| 0° - 60° | 3777 | 66.3 | 85.3 |
| 0° - 90° | 4426 | 77.7 | 100.0 |
| 90° - 180° | 0 | 0.0 | 0.0 |
| 0° - 180° | 4426 | 77.7 | 100.0 |