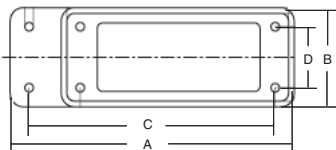


Size Adapter Plate: Selection Guide for Panel Installation

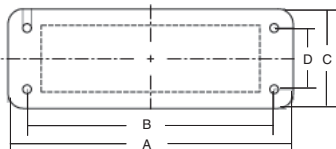


NOTE: Adapter plates are for use with panel bases in Series B24, D64, DD108, M7, V10, and V16

ADAPTER SIZE	CAT. NO.	DIMENSIONS ARE IN INCHES / (MILLIMETERS)			
		A	B	C	D
B24 TO B6	AP650B6	5.90 / (150)	2.05 / (52)	5.12 / (130)	1.26 / (32)
B24 TO B10	AP651B10	5.90 / (150)	2.05 / (52)	5.12 / (130)	1.26 / (32)
B24 TO B16	AP652B16	5.90 / (150)	2.05 / (52)	5.12 / (130)	1.26 / (32)

H - High Profile

Cover Plate Selection Guide



HOUSING SERIES				CAT. NO.	DIMENSIONS ARE IN INCHES / (MILLIMETERS)			
A, B, T, K	C, V	D	DD		A	B	C	D
A3, A4		D7, D8						
A10		D15		CP684A10	3.43 / (87)	2.76 / (70)	1.57 / (40)	.69 / (17.5)
A16		D25		CP685A16	3.94 / (100)	3.39 / (86)	1.77 / (45)	.69 / (17.5)
B6, T6			DD24	CP638B6	3.39 / (86)	2.76 / (70)	2.05 / (52)	1.26 / (32)
B10, T10	V3		DD42	CP639B10	4.02 / (102)	3.27 / (83)	2.05 / (52)	1.26 / (32)
B16, T16	C6, V6	D40	DD72	CP640B16	4.84 / (123)	4.06 / (103)	2.05 / (52)	1.26 / (32)
B24, T24, K12	V10, V16	D64	DD108	CP641B24	5.91 / (150)	5.12 / (130)	2.05 / (52)	1.26 / (32)

NOTE: Cover plates are for use on panel bases only

Gaskets

HOUSING SERIES				CAT. NOS.	
A, B, T, K	C, V	D	DD	PANEL BASE, FLAT	*MOLDED EDGE CONTOUR
A3, A4		D7, D8		A04XFGP	A04XMEC
A10		D15		A10XFGP	A10XMEC
A16		D25		A16XFGP	A16XMEC
A32		D50		A32XFGP	A32XMEC
B6, T6**			DD24	B6XFGP	B6XMEC
B10, T10**	V3		DD42	B10XFGP	B10XMEC
B16, T16**	V6, C6	D40	DD72	B16XFGP	B16XMEC
B24, T24**, K12	V10, V16	D64	DD108	B24XFGP	B24XMEC
B32	C12	D80	DD144	B32XFGP	B32XMEC
B48, K24	V20, V26, V32	D128	DD216	B48XFGP	B48XMEC

* Install with silicone sealant/adhesive for industrial use.

** For T series 200°C applications, specify catalog number at right except "T" prefix instead of "B" for gaskets.

EX: Use "T16XFGP" for panel base gaskets.