

Small partitions

Small partitions type TSch

Partitions can be retrofitted between the cross-connections or the sockets for terminals up to max. 12 mm.



| Type | Cat. No. | Qty. |
|--|-------------------|------|
| TSch 1 | 0319160000 | 100 |
| For use between fixed cross-connections with differing potentials for terminal types: SAK 2.5...SAK 16 and DK 4. | | |



| Type | Cat. No. | Qty. |
|---|-------------------|------|
| TSch 2 | 0353660000 | 100 |
| For use between removable cross-connections with differing potentials for terminal types: SAK 4...16 and disconnect test terminals SAKT and WTL 6/1 | | |



| Type | Cat. No. | Qty. |
|---------------------------------------|-------------------|------|
| TSch 2 (orange) | 0132460000 | 100 |
| with cut-out for SAKT 2 | | |
| TSch 3 | 0366860000 | 100 |
| For use with terminal type SAKD 2.5 N | | |



| Type | Cat. No. | Qty. |
|---|-------------------|------|
| TSch 4 | 0363360000 | 100 |
| For terminal types: AKZ 4, AKB 4, AK 4, DK 4 and DKB 4/10 | | |



| Type | Cat. No. | Qty. |
|--|-------------------|------|
| TSch 6 | 0190260000 | 100 |
| For terminal types: DK 4 S, DK1 4, DKIS 4 and DKIT 4 | | |

Partitions

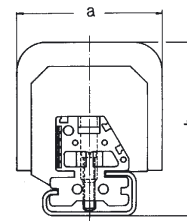
WTW/TW

Depending on the operating voltage, a partition may be needed between neighbouring cross-connection groups. This is essential to maintain creepage and clearance distances.

For some terminals we supply partitions in tropical-grade cardboard (HP 020628). Partitions in cardboard type 020610 are available on request.

Assembly on TS 35/TS 32

| Cat. No. | Material | Thick. | a b b (Dimensions in mm) | | | for terminal type |
|-------------------|----------|--------|--------------------------|-------|--------------|--------------------|
| | | | TS 32 | TS 35 | W-Reihe/EExi | |
| 1058800000 | WEMID | 3 | 80 | 63 | 63 | SAK 2.5...16/EExi |
| 0302820000 | KrG | 2.5 | 50 | 59.5 | 50 | SAK 2.5 |
| 0302830000 | KrS | 2.5 | 50 | 59.5 | 50 | SAK 2.5 |
| 0302860000 | PA | 1.5 | 50 | 59.5 | 50 | SAK 2.5 |
| 0130120000 | KrG | 2.5 | 50 | 59.5 | 52 | SAK 4, 6 N, 10 |
| 0130130000 | KrS | 2.5 | 50 | 59.5 | 52 | SAK 4, 6 N, 10 |
| 0130160000 | PA | 1.5 | 50 | 59.5 | 52 | SAK 4, 6, 10 |
| 0281120000 | KrG | 3 | 60 | 65.5 | - | SAK 16 |
| 0281130000 | KrS | 3 | 60 | 65.5 | - | SAK 16 |
| 0303660000 | PA | 1.5 | 58 | 67 | 60.5 | SAK 16 |
| 0304320000 | KrG | 3 | 74 | 75.5 | 68 | SAK 35, 35 N |
| 0304330000 | KrS | 3 | 74 | 75.5 | - | SAK 35, 35 N |
| 0304360000 | PA | 1.5 | 74 | 75.5 | 68 | SAK 35, 35 N |
| 0242920000 | KrG | 3 | 75 | 58.5 | 54.5 | SAKB 10, C 10 |
| 0242960000 | PA | 1.5 | 75 | 58.5 | 54.5 | SAKB 10, C 10 |
| 0191860000 | PA | 1.5 | 42.5 | 49 | 44 | SAKD 2.5 N |
| 1050100000 | WEMID | 1.5 | 51 | - | 63 | WDU 2.5...10 |
| 0257120000 | KrG | 3 | 80 | - | 70 | EExi, SAK 2.5...16 |
| | KrS | 3 | 80 | - | 70 | EExi, SAK 2.5...16 |



EExi



Partitions in cardboard TW-HP

| Cat. No. | Material | Thick. | a b b (Dimensions in mm) | | | for terminal type |
|-------------------|----------|--------|--------------------------|-------|--------------|--------------------------------------|
| | | | TS 32 | TS 35 | W-Reihe/EExi | |
| 0307500000 | HP T* | 0.5 | 32.5 | 48.5 | 48.5 | SAKD 2.5 N |
| 0297100000 | HP T* | 1 | 50 | 54.5 | 54.5 | SAK 2.5 |
| 0197100000 | HP | 0.5 | 40 | 57.5 | 57.5 | SAK 4, SAK 6 N, SAK 10, AST 3, AST 4 |
| 0474700000 | HP | 0.5 | 65 | 62.6 | 62.6 | AST 1/AST 5 |
| 0151400000 | HP | 2 | 120 | 75.6 | 75.6 | SAKG 28 |
| 0164600000 | HP T* | 2 | 120 | 75.5 | 75.5 | SAKG 32 II, SAKG 70 |
| 0177100000 | HP | 2 | 160 | 90.5 | 90.5 | SAKG 32 |
| 0179900000 | HP T* | 2 | 160 | 90.5 | 90.5 | SAKG 40, 46, 54 I + III |
| 0369800000 | HP T* | 2 | 80 | 72.5 | 72.5 | SAK 2.5 |
| 0369900000 | HP | 2 | 80 | 72.5 | 72.5 | |

between fused and non-fused circuits

Assembly on TS 15

| | | | | | | |
|-------------------|-------|-----|------|----|----|----------------|
| 0318560000 | PA | 1.5 | 32.5 | 34 | 34 | AKZ 2.5, 2.5 K |
| 0318580000 | PA bl | 1.5 | 32.5 | 34 | 34 | AKZ 2.5, 2.5 K |
| 0118930000 | KrS | 2 | 38 | 38 | 38 | AKZ 4, AKB 4 |

T* = tropical grade

End plates

WAP/AP

With few exceptions, the last terminal in a row must be covered with a type WAP / AP end plate.

End plates must also be inserted in terminal strips with different sized terminals. The external dimensions of the end plates correspond to the outer dimensions of the respective terminals. The end plate is fixed by an end bracket.

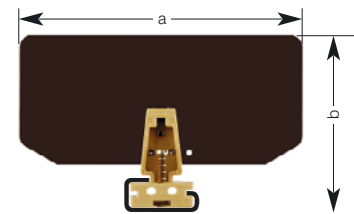


| Type | Cat. No. | Use with |
|---------------|-----------------------|---|
| WAP WDU 2.5 N | 1060000000 | WDU 2.5 N |
| WEMID | | |
| WAP 2.5...10 | 1050000000 | WDU 2.5...10 |
| WEMID | | |
| WAP 16 and 35 | 1050100000 | WDU 16 and 35 |
| WEMID | | |
| WAP WDL 2.5/S | 1067700000 | WDL 2.5/S |
| WEMID | | |
| WAP WDL WEMID | 1067800000 | WDL 2.5 |
| WAP WTL | 1068300000 | WTL 6/1/WTD 6/1 |
| WEMID | | |
| WAP WDK | 1059100000 | WDK |
| WEMID | | |
| AP | 0150960000 | SAKD 2.5 N |
| AP 2.5 | KrG 0279520000 | SAK 2.5 and TT |
| | PA 0279560000 | KB 2.5/10, |
| | KrS 0279530000 | SAK 2.5 L and LL |
| AP | KrG 0117920000 | SAK 4, 6 N, 10, SAKC 4, NT 2, SLK 1, SAK 4 S and SS |
| | PA 0117960000 | KB 4, 6 and 10 |
| | KrS 0117930000 | |
| AP 16 | KrG 0271120000 | SAK 16 |
| | PA 0271160000 | |

| Type | Cat. No. | Use with |
|--------|-----------------------|--|
| AP 35 | KrG 0303620000 | SAK 35, 35 N |
| | PA 0303660000 | |
| AP 70 | KrG 0340920000 | SAK 70 |
| | PA 0340960000 | |
| | KrS 0340930000 | |
| AP 95 | KrG 0550920000 | SAK 95 |
| AP 2.5 | KrG 0309220000 | SAK 2.5 L |
| AP | PA 0438560000 | DK 4/380 Q |
| AP | KrG 0266420000 | AST 1, 5 and 5 T |
| AP | KrG 0298120000 | AST 3 and 4 |
| AP | PA 0582560000 | AST 6, TOP 2.5 |
| AP | PA 0483460000 | TOP 4 SF / FF |
| AP | KrG 0294420000 | AKZ 4 |
| AP | PA 0294460000 | AKZ 4 S and SS, AKZ 4, AKZ 4 L and LL, AKZ 4 T |
| AP | KrG 0146720000 | SAKT 1, SAKC 10, SAKB 10, SAKS 7 |
| AP | KrG 0329120000 | SAKT 2 |
| AP | PA 0211360000 | SAKR, SAKR-L, SAKR-D |
| AP | KrG 0134220000 | SAKA 10 |
| AP | KrG 0191320000 | SAKS 1 and 3 |
| AP | PA 0340560000 | AKZ 1.5, AKZ 1.5 T |
| AP | PA 0329660000 | AKZ 1.5 W |
| AP | KrS 0131730000 | SAKH 6 - 10 |

End plates

EP end plates for SAKG



| Cat. No. | Material | Thick. | Dimensions (mm) | | | for terminal types |
|------------------------|----------|--------|-----------------|------|------|--------------------|
| | | | a | b | b | |
| Mounting on TS 32 rail | | | | | | |
| 0205100000 | HP | 2 | 120 | 75.5 | 75.5 | SAKG 28, 32 II, 70 |
| 0205200000 | HP T* | 2 | 120 | 75.5 | 75.5 | |
| 0205300000 | HP | 2 | 160 | 90.5 | 90.5 | SAKG 32 I + III, |
| 0205400000 | HP T* | 2 | 160 | 90.5 | 90.5 | 40, 46, 54 |
| Mounting on TS 35 rail | | | | | | |
| 0180500000 | HP | 2 | 120 | 75.5 | 75.5 | SAKG 32 II, 70 |
| 0180600000 | HP T* | 2 | 120 | 75.5 | 75.5 | |
| 0180700000 | HP | 2 | 160 | 90.5 | 90.5 | SAKG 32 I + III, |
| 0180800000 | HP T* | 2 | 160 | 90.5 | 90.5 | 40, 46, 54 |

T* = tropical grade