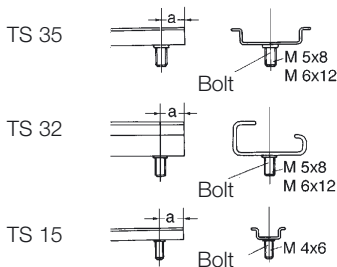


Mounting rails

The mounting rail can also be used as a protective busbar. Weidmüller protective conductor terminals of the W, Z, I, AKZ and SAK series meet the requirements specified in IEC 60947-7-2. In accordance with VDE 0100 Part 540, at conductor cross-sections of 10 mm² and more, protective conductor and neutral conductor can be combined into one line with the symbol PEN. If mounting rail is used as a PEN busbar, the following criteria must be observed:

- Only E-Cu or aluminium profiles may be used
- The short-circuit currents and the rated terminal currents must be observed
- The mounting rails must be insulated for the protective measure, "protective insulation".

Depending on the various applications, the mounting rails are made of steel, aluminium or copper. All steel versions are electroplated and additionally passivated with a yellow chromate coating. All mounting rails are available in pieces of 1 and 2 m length. All non-slotted mounting rails can be provided with fixing holes (please state dimensions b and l₂). Additionally, all non-slotted steel rails can be supplied with welded steel bolts (please state dimensions "a" and the desired bolt).



Fixing holes
b iaw. specs (ø 3.5/4.5/5.5/7)
l₂ iaw. specs
l₁ to 2 m

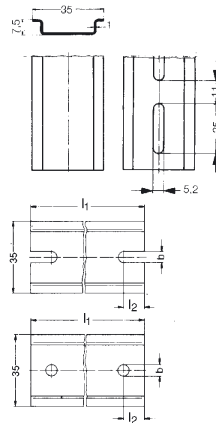
TS 35 x 7.5
Steel, stainless steel



TS 35 x 7.5
Aluminium



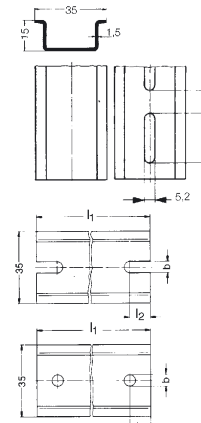
TS 35 x 7.5
Steel slotted



TS 35 x 15
Steel



TS 35 x 15
Steel slotted

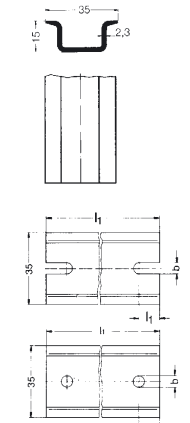


Fixing holes
for TS 35 x 15, Steel
b iaw. specs (ø 3.5/4.5/5.5/7)
l₂ iaw. specs
l₁ to 3 m

TS 35 x 15/2.3
Steel



TS 35 x 15/2.3
Copper



Fixing holes
b iaw. specs (ø 3.5/4.5/5.5/7)
l₂ iaw. specs
l₁ to 3 m

| Ordering data | Type | Cat. No. | Qty. |
|--|-------------|----------|-----------------|
| Stainless steel X5 CrNi 18-10, l = 2 m | TS 35 x 7.5 | | 1747350000 10 m |
| Steel, l = 2 m | TS 35 x 7.5 | | 0383400000 10 m |
| Steel, l = 1 m | | | |
| Steel slotted, l = 2 m | TS 35 x 7.5 | | 0514500000 10 m |
| Steel slotted, zinc-plated, l = 2 m | TS 35 x 7.5 | | 7915060000 10 m |
| Steel slotted, l = 1 m | TS 35 x 7.5 | | 0514510000 10 m |
| Alu, l = 2 m | TS 35 x 7.5 | | 0330800000 10 m |
| Alu slotted | | | |
| Cu | | | |
| PVC grey | | | |

| Technical data | Steel | Alu |
|---|--------------------|--------------------|
| Material | St 2 zinc-plated | AL blank |
| Standard | DIN EN 50 022 | DIN EN 50 022 |
| Short-circuit proof Δ E-Cu-conductor (IEC 60 947-7-1) | 16 mm ² | 35 mm ² |
| Max. permissible rated current for PEN function | | 125 A |

| End bracket | Type | Cat. No. | Qty. |
|-------------|----------|------------|------|
| | EW 35 | 0383560000 | 50 |
| | WEW 35/1 | 1059000000 | 50 |
| | WEW 35/2 | 1061200000 | 50 |

For slotted TS 32 rail

| Mounting rails support | Type | Cat. No. | Qty. |
|------------------------|--------|------------|------|
| (M 5 thread) | TSTW 5 | 0178100000 | 10 |
| (M 6 thread) | TSTW 6 | 0164000000 | 10 |
| (M 6 thread) | TST 2 | 0101700000 | 10 |

| Fixing screw | Type | Cat. No. | Qty. |
|--------------|---------------|------------|------|
| | FKSC M 6 x 12 | 0353500000 | 50 |
| | FKSC M 6 x 8 | 0642600000 | 50 |
| | FKSC M 5 x 8 | 0295900000 | 50 |

| Mounting foot | Type | Cat. No. | Qty. |
|---------------------------------|---------------|------------|------|
| Steel with M 4 thread | FM 4 | 0687900000 | 40 |
| PA 66 orange | Mounting foot | 0646260000 | 20 |
| With M 3 and M 5 thread (cream) | | | |

| Support block | Type | Cat. No. | Qty. |
|---------------|------|------------|------|
| | SH 2 | 0494920000 | 10 |

| Locking pin | Type | Cat. No. | Qty. |
|--|------|----------|------|
| Locking pin, CuNi (length as desired) | | | |
| Locking pin, brass (length as desired) | | | |

| Type | Cat. No. | Qty. | Type | Cat. No. | Qty. |
|------------|------------|------|------------|------------|------|
| TS 35 x 15 | 0236400000 | 10m | TS 35 x 15 | 0498000000 | 10m |
| TS 35 x 15 | 0236500000 | 10m | TS 35 x 15 | 0498010000 | 10m |
| TS 35 x 15 | 7907490000 | 10m | | | |
| TS 35 x 15 | 0236510000 | 10m | | | |
| | | | | | |
| | | | TS 35 x 15 | 0270100000 | 10m* |

| Technical data | Steel | Copper |
|---|--------------------|--|
| Material | St 2 zinc-plated | St 2 zinc-plated Cu, blank |
| Standard | DIN EN 50 022 | DIN EN 50 022 |
| Short-circuit proof Δ E-Cu-conductor (IEC 60 947-7-1) | 25 mm ² | 50 mm ² 150 mm ² |
| Max. permissible rated current for PEN function | | 309 A |

| End bracket | Type | Cat. No. | Qty. |
|-------------|----------|------------|------|
| | EW 35 | 0383560000 | 50 |
| | WEW 35/1 | 1059000000 | 50 |
| | WEW 35/2 | 1061200000 | 50 |

| Mounting rails support | Type | Cat. No. | Qty. |
|------------------------|--------|------------|------|
| (M 5 thread) | TSTW 5 | 0178100000 | 10 |
| (M 6 thread) | TSTW 6 | 0164000000 | 10 |
| (M 6 thread) | TST 2 | 0101700000 | 10 |

| Fixing screw | Type | Cat. No. | Qty. |
|--------------|------------|------------|------|
| | FKSC M6x12 | 0353500000 | 50 |
| | FKSC M6x8 | 0642600000 | 50 |
| | FKSC M5x8 | 0295900000 | 50 |

| Mounting foot | Type | Cat. No. | Qty. |
|---------------------------------|---------------|------------|------|
| Steel with M 4 thread | FM 4 | 0687900000 | 40 |
| PA 66 orange | Mounting foot | 0646260000 | 20 |
| With M 3 and M 5 thread (cream) | | | |

| Support block | Type | Cat. No. | Qty. |
|---------------|------|------------|------|
| | SH 2 | 0494920000 | 10 |

| Locking pin | Type | Cat. No. | Qty. |
|--|------|----------|------|
| Locking pin, CuNi (length as desired) | | | |
| Locking pin, brass (length as desired) | | | |

* Available in length of 1 or 2 m