

RadioRA² 2 Maestro[®] Local Controls

RadioRA² 2 Maestro[®] local controls function much like standard dimmers and switches, but can be controlled as part of a lighting control system. Local lighting controls are useful in locations where single circuits of lighting need to be dimmed or switched. Local fan speed controls are useful in locations where control of a single ceiling paddle fan is needed.

RadioRA² 2 Maestro[®] dimmers incorporate advanced features such as fade on/fade off, delayed long fade to off, and rapid full on.

RadioRA² 2 Maestro[®] local controls include a Front Accessible Service Switch (FASS[™]) for safe lamp replacement. RadioRA² 2 Maestro[®] local controls install in single-pole or multi-location applications. Remote dimmers/switches are available for multi-location control.

Use Lutron[®] Designer (Claro[®] or Satin Colors[®]) wallplates or designer-style wallplates from other manufacturers. Wallplates are sold separately. Lutron[®] Claro[®] and Satin Colors[®] wallplates snap on with no visible means of attachment. RadioRA² 2 Maestro[®] local controls support color change kits.



Dimmer



Switch



Fan Speed



Remote Dimmer



Remote Switch

RadioRA² Maestro[®] Local Controls

Model Numbers

Dimmers

Incandescent/Halogen/MLV (120 V~)

RRD-6CL-XX	600 W/VA (Incandescent/Halogen/MLV) or 150 W (CFL/LED) Two-Wire Dimmer*
RRD-6D-XX	600 W Incandescent/Halogen, 600 VA Magnetic Low Voltage
RRD-10D-XX	1000 W/1000 VA Dimmer
RRD-10ND-XX	1000 W/1000 VA Neutral Wire Dimmer

Incandescent/Halogen/MLV/ELV (120 V~)

RRD-6NA-XX	600 W/600 VA Neutral Wire Adaptive Dimmer
------------	---

3-Wire Fluorescent/LED (120-277 V~)

RRD-F6AN-DV-XX	6 A Neutral Wire Dimmer
----------------	-------------------------

Switches

Lighting and Motor Loads (120 V~)

RRD-8ANS-XX	8 A Light, 1/4 HP 5.8 A Motor Neutral Wire Electronic Switch
-------------	--

Lighting and Motor Loads (120-277 V~)

RRD-8S-DV-XX	8 A Light, 1/10 HP 3 A Motor Two-Wire Electronic Switch
--------------	---

Fan Speed Control

Single ceiling paddle fan only (120 V~)

RRD-2ANF-XX	2 A Fan Speed Control
-------------	-----------------------

Remotes (for multi-location installations)

RD-RD-XX	Remote Dimmer (120 V~)
RD-RS-XX	Remote Switch (120 V~)
RD-RD-277-XX	Remote Dimmer (277 V~) (for use with -F6AN-DV only)
RD-RS-277-XX	Remote Switch (277 V~) (for use with -8S-DV only)

Color Change Kits

RK-D-XX	Dimmer (-6CL, -6D, -10D, -10ND, -6NA, -F6AN-DV)
RK-S-XX	Switch (-8ANS and -8S-DV)
RK-AD-XX	Remote Dimmer (-RD)
RK-AS-XX	Remote Switch (-RS)
RK-F-XX	Fan Speed Control (-2ANF)

* Go to www.lutron.com/LEDtool to see all compatible CFL/LED lamps.

Note: "XX" in the model number represents color/finish code. See **Colors and Finishes** at end of document.

RadioRA² Maestro[®] Local Controls

Colors and Finishes

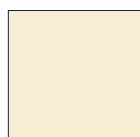
Gloss Finishes



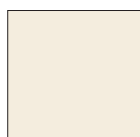
White
WH



Ivory
IV



Almond
AL



Light Almond
LA



Gray
GR



Brown
BR



Black
BL

Satin Finishes



Hot
HT



Merlot
MR



Plum
PL



Turquoise
TQ



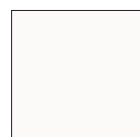
Taupe
TP



Eggshell
ES



Biscuit
BI



Snow
SW



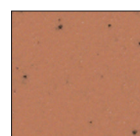
Palladium
PD



Midnight
MN



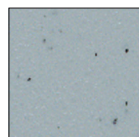
Sienna
SI



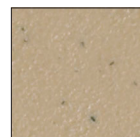
Terracotta
TC



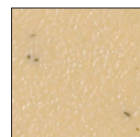
Greenbriar
GB



Bluestone
BG



Mocha Stone
MS

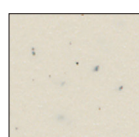


Goldstone
GS

- Due to printing limitations, colors and finishes shown cannot be guaranteed to perfectly match actual product colors.
- Color chip keychains are available for more precise color matching:
Gloss Finishes: DG-CK-1
Satin Finishes: SC-CK-1



Desert Stone
DS



Stone
ST



Limestone
LS

Metal Finish (wallplate only)



Stainless Steel
SS

When using Stainless Steel wallplates, it is recommended that you order the controls in Midnight (MN).