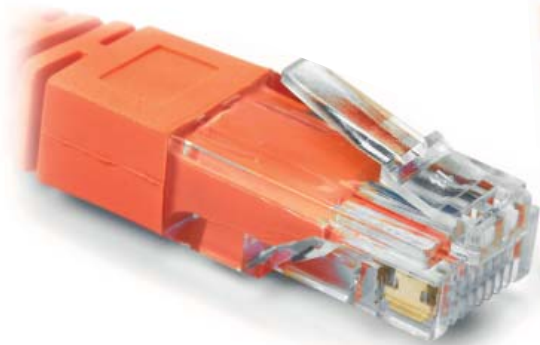


HYPERLINE® Patch Cords, Category 5e

Patch Cord UTP, Category 5e, Standard Plug

PC-LPM-UTP-RJ45-RJ45-C5e-YYM-XX



Various Jacket Colors for patch cords of all categories



black (BK)



blue (BL)



orange (OR)



red (RD)



green (GN)



gray (GY)



white (WH)

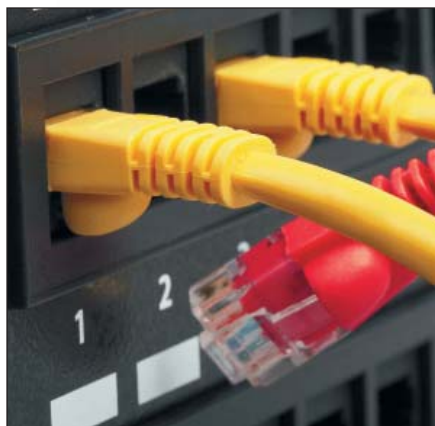
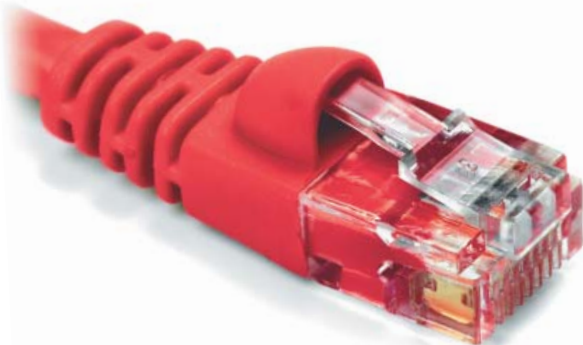


yellow (YL)

Specifications	Fire resistant: CM
Materials	<p>Cable: Conductor: 7 copper strands $\varnothing 0.008''$ (0.20 mm), 24 AWG Diameter of insulated conductor: $0.039'' \pm 0.002''$ (0.98 \pm 0.05 mm) Number of pairs: 4 Color of twisted pairs: blue-white/blue, orange-white/orange, green-white/green, brown-white/brown Jacket: PVC $\varnothing 0.22'' \pm 0.008''$ (5.5 \pm 0.2 mm)</p> <p>Plugs: 2 pieces RJ-45 8P8C Contact: 50 microinches (1.27 micron) gold-plated copper alloy Molded Boot Material: PVC</p>
Ordering information	<p>PC-LPM-UTP-RJ45-RJ45-C5e-YYM-XX HYPERLINE Patch cord UTP, category 5e, standard plug (YY – length: 1.64' (0.5 m), 3.28' (1 m), 4.92' (1.5 m), 6.56' (2 m), 9.84' (3 m), 16.4' (5 m), 19.68' (6 m), 22.96' (7 m), 26.25' (8 m), 29.53' (9 m), 32.8' (10 m), 49.21' (15 m); XX – color: black (BK), blue (BL), green (GN), gray (GY), orange (OR), red (RD), white (WH), yellow (YL), see various jacket colors</p>

Patch Cord UTP, Category 5e, Short Plug, with Boot and Bubble

PC-SPM-UTP-RJ45-RJ45-C5e-YYM-XX



Specifications	Fire resistant: CM
Materials	<p>Cable: Conductor: 7 copper strands $\varnothing 0.008''$ (0.20 mm), 24 AWG Diameter of insulated conductor: $0.039'' \pm 0.002''$ (0.98 \pm 0.05mm) Number of pairs: 4 Color of twisted pairs: blue-white/blue, orange-white/orange, green-white/green, brown-white/brown Jacket: PVC $\varnothing 0.22'' \pm 0.008''$ (5.5 \pm 0.2mm)</p> <p>Plugs: 2 pieces RJ-45 8P8C (short plug, with boot and bubble) Contact: 50 microinches (1.27 micron) gold-plated copper alloy Molded Boot Material: PVC</p>
Ordering information	<p>PC-SPM-UTP-RJ45-RJ45-C5e-YYM-XX HYPERLINE Patch cord UTP, category 5e, short plug, with boot and bubble (YY – length: 1.64' (0.5 m), 3.28' (1 m), 4.92' (1.5 m), 6.56' (2 m), 9.84' (3 m), 16.4' (5 m), 19.68' (6 m), 22.96' (7 m), 26.25' (8 m), 29.53' (9 m), 32.8' (10 m), 49.21' (15 m); XX – color: black (BK), blue (BL), green (GN), gray (GY), orange (OR), red (RD), white (WH), yellow (YL), see various jacket colors</p>