

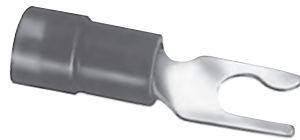
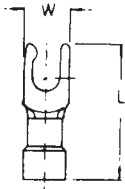
TYPE ILSCONS

Features

- Color coded
- Funnel Entry
- Manufactured from high strength copper alloy
- Electro-tin plated
- Vinyl insulation
- Packaged in convenient small quantities
- UL Listed and CSA Certified for 600 volts, 90° C

Benefits

- Provides easy wire range identification
#22-16 AWG Red
#16-14 AWG Blue
#12-10 AWG Yellow
- Provides maximum conductivity
- Provides low contact resistance
- Provides tough pliable insulative qualities to protect connectors and wire from corrosion as well as providing some strain relief
- Attractive resealable packaging designed for merchandise racks
- Ensures reliability for copper conductor



Catalog Number	Wire Range	Stud Size	Dimensions		Maximum Wire Insulated Diameter	Connector Type
			L	W		
44501-B100	16-22	6	.835	.252	.145	Vinyl Insulated Spade Terminals (Expanded)
44501-B1000	16-22	6	.835	.252	.145	Vinyl Insulated Spade Terminals (Expanded)
44503-B100	16-22	10	.835	.335	.145	Vinyl Insulated Spade Terminals (Expanded)
44503-B1000	16-22	10	.835	.335	.145	Vinyl Insulated Spade Terminals (Expanded)
44511-B100	14-16	6	.827	.236	.175	Vinyl Insulated Spade Terminals (Expanded)
44511-B1000	14-16	6	.827	.236	.175	Vinyl Insulated Spade Terminals (Expanded)
44513-B100	14-16	10	.827	.319	.175	Vinyl Insulated Spade Terminals (Expanded)
44513-B1000	14-16	10	.827	.319	.175	Vinyl Insulated Spade Terminals (Expanded)
44522-B50	10-12	10	1.004	.354	.255	Vinyl Insulated Spade Terminals (Expanded)
44522-B500	10-12	10	1.004	.354	.255	Vinyl Insulated Spade Terminals (Expanded)

Can be supplied in bulk. Consult factory for part number.

Other sizes available on request. Contact factory for pricing.

