
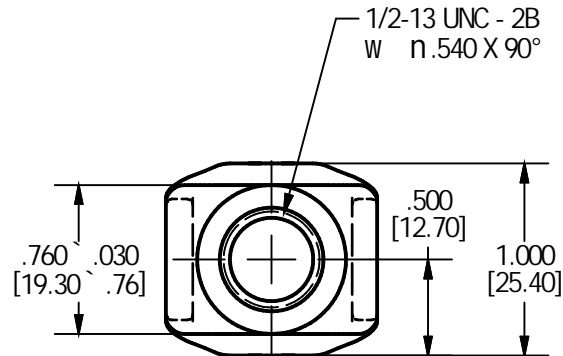
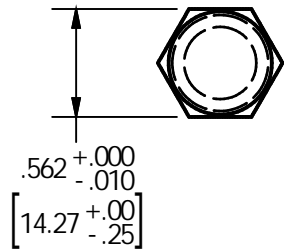
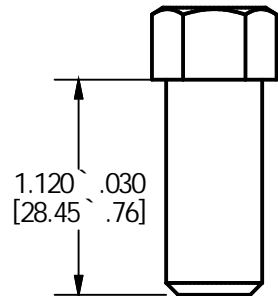
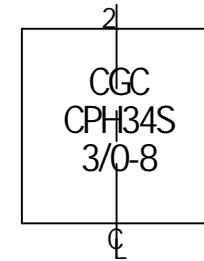
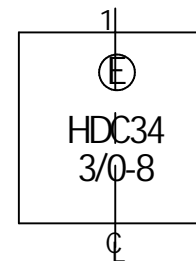


SCREW: AS BELOW	MATERIAL: CU CDA 956 (CLAMP) CDA 651 (SCREW)	TOLERANCES-UNLESS OTHERWISE SPECIFIED 2 PL. DEC. ±.015 3 PL. DEC. ±.015	DWG. NO. R1768-00					
CAT. NO.:	PLATING: NONE	TRUE C.L. ±.015 ANGLES ±1	SHEET 1 OF 1					
MASS: .2674 LBS	MARKING: AS BELOW	DRAWN BY: JG	SCALE: 1=1					
SURFACE AREA: 11.1600 IN ²		DATE: 11/8/2007	SIZE: A					
STUFFER SHT: FORM 1	CELL:	<table border="1"> <thead> <tr> <th>REV.</th> <th>DESCRIPTION</th> </tr> </thead> <tbody> <tr> <td>B</td> <td></td> </tr> </tbody> </table>			REV.	DESCRIPTION	B	
REV.	DESCRIPTION							
B								

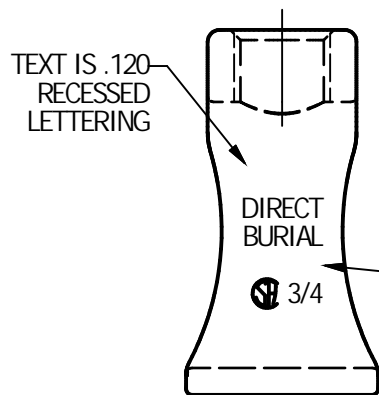
Cat #: GRC-75



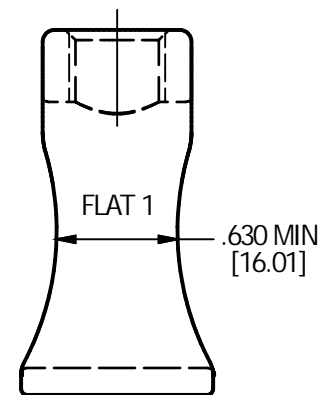
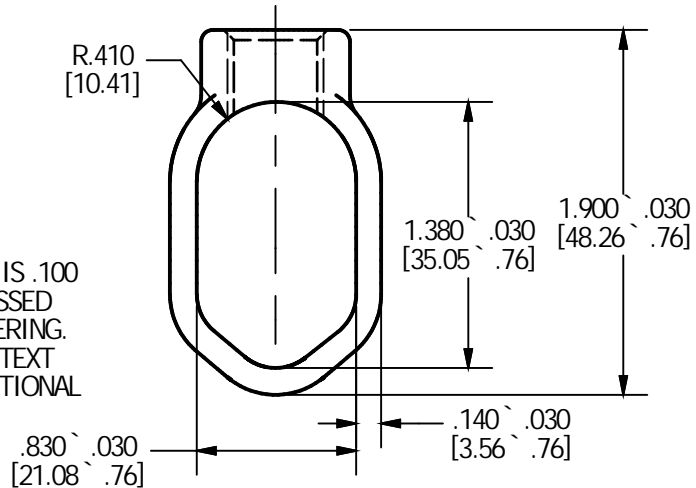
IDENTIFICATION STAMPS



SCREW



TEXT IS .100 RECESSED LETTERING. THIS TEXT IS OPTIONAL



CLAMP

SCALE 1 : 1

