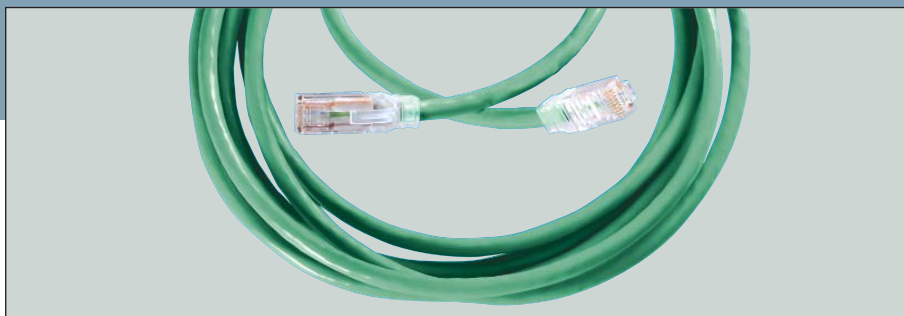


## Patch Panels and Patch Cords



### PATCH CORDS

Ortronics Clarity<sup>5E</sup> patch cords utilize center tuned technology to elevate the performance of Category 5e structured cabling. Clarity<sup>5E</sup> cords are finely controlled to an optimum center target shared by Clarity<sup>5E</sup> connecting hardware for heightened performance that is confirmed by factory testing. This ensures an interface with improved signal-to-noise ratio for

a more transparent signal path that is field measurable in the link or channel.

Clarity<sup>5E</sup> cords use Ortronics' patented Paralign 2 termination technique to maintain pair integrity between the point of exit from the cable jacket and the contact termination. The plug is designed to the center of the range of TIA de-embedded plug values. ■

### FEATURES

- Exceeds Category 5e component specifications TIA/EIA-568-B.2
- ETL 3rd party component tested and verified
- Factory tested for Category 5e performance
- Transparent to signal with Clarity<sup>5E</sup> jacks and panels
- Snagless design also provides bend radius support
- Optimized plug paired bi-level contact array
- Premium performance Category 5e stranded conductor cordage
- Compatible with both T568A and T568B wiring
- Icon compatibility to support TIA 606 standard
- Available in 7 standard colors

### ORDERING INFORMATION

DESCRIPTION	PART NO.
ANGLED, HIGH DENSITY 6 PORT PATCH PANELS	
24-port, T568A/B, 1.75" x 19" (1RU)	OR-PHA5E6U24
48-port, T568A/B, 3.5" x 19" (2RU)	OR-PHA5E6U48
CURVED, HIGH DENSITY 6 PORT PATCH PANELS	
24-port, Category 5E, T568A/B, 1.75" x 19" (1RU)	OR-PHC5E6U24
48-port, Category 5E, T568A/B, 3.5" x 19" (2RU)	OR-PHC5E6U48
FLAT, HIGH DENSITY 6 PORT PATCH PANELS	
24-port, T568A/B, 1.75" x 19" (1RU)	OR-PHD5E6U24
48-port, T568A/B, 3.5" x 19" (2RU)	OR-PHD5E6U48
96-port, T568A/B, 7.0" x 19" (4RU)	OR-PHD5E6U96
FLAT, STANDARD DENSITY 6 PORT PATCH PANELS	
12-port, T568A/B, 1.75" x 19" (1RU)	OR-PSD5E6U12
24-port, T568A/B, 3.5" x 19" (2RU)	OR-PSD5E6U24
48-port, T568A/B, 5.25" x 19" (3RU)	OR-PSD5E6U48
96-port, T568A/B, 10.5" x 19" (6RU)	OR-PSD5E6U96
FLAT, HIGH DENSITY 8 PORT PATCH PANELS	
24-port, T568A/B, 1.75" x 19" (1RU)	OR-PHD5E8U24
48-port, T568A/B, 3.5" x 19" (2RU)	OR-PHD5E8U48
96-port, T568A/B, 7.0" x 19" (4RU)	OR-PHD5E8U96

### ORDERING INFORMATION

DESCRIPTION	LENGTH	PART NO.
Modular Cord, green, Clarity <sup>5E</sup>	3 ft	OR-MC5E03-05
	5 ft	OR-MC5E05-05
	7 ft	OR-MC5E07-05
	9 ft	OR-MC5E09-05
	15 ft	OR-MC5E15-05
	25 ft	OR-MC5E25-05

Note: to order other standard colors change suffix on MC cords: -02=red, -04=yellow, -05=green, -06=blue, -08=gray, -09=white, -00=black.