

Scepter[®] PVC Molded Hinged Cover Junction Boxes



Scepter[®]
JBox[™]



ELECTRICAL SYSTEMS

**PVC MOLDED HINGED COVER
JUNCTION BOX**

• 8" & 12"



IPEX
Committed to Excellence

We build tough products for tough environments[®]

The **Scepter® JBox™** has a new feature...the **Hinged Cover**

Tested to perform in demanding industrial environments, the new **Scepter Hinged Cover JBox** junction box has added features to make this the easiest box to use – no matter the situation.

The new **Hinged Cover** opens more than 180° for complete and easy access to control

devices and instruments and is designed to work with your existing PVC conduit runs. The **Scepter Hinged Cover JBox** is NEMA 3R and 4X rated, ideally suited for indoor and outdoor use and in wash-down environments. It is 100% non-metallic and includes all the features that users have come to appreciate in the **Scepter JBox**.



Advantages

Hinged Cover

The new Hinged Cover opens over 180° for complete access to installed devices

Fastener System

Features quarter-turn fasteners that are hand-close and tool-assist to open

Integrated Gasket

Injection molded to the cover for a water-tight and dust-tight seal

Flat Cover

Easily mount devices in the flat & unobstructed cover

Molded Mounting Feet

No loose parts & positioned on the corners

Grid Lines

Provide an easy reference for drilling conduit entry holes

Molded Panel Mounts

Standoffs are molded-in to accept back panels as well as DIN rails

Product Codes

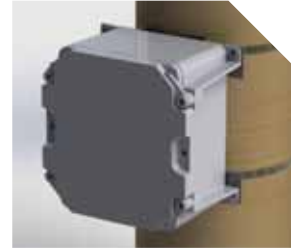
Size (inches)	Part Number	Product Code
★ 8x8x4	JBXH884	277100
★ 8x8x7	JBXH887	277101
12x10x6	JBXH12106	277102
12x12x4	JBXH12124	277103
12x12x6	JBXH12126	277104
12x12x8	JBXH12128	277105

★ Coming Soon!

Accessories

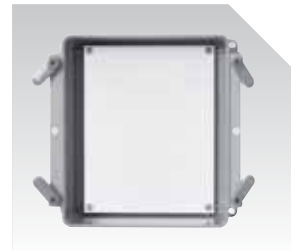
Pole Mount Kit

- > Easily mount the Scepter JBox to a utility pole using the universal pole mount kit
- > Suitable for indoor and outdoor use
- > Works with wooden, concrete, steel & fiberglass poles
- > Fits round, square & octagonal shape poles up to 15" diameter



Back Panels

- > Offers versatile mounting option for devices & controls
- > 14 gauge carbon steel with a white epoxy powder coat finish
- > Available in 8" & 12" sizes



NEMA Rated

1, 2, 3R, 4, 4X, 12, 13

FULLY CERTIFIED

CSA C22.2 No. 94.1/94.2, UL 50/50E

Description	Part Number	Product Code
Pole Mount Kit	PMK4-12	077940
8x8" Back Panel	BP88CSW	077861
12x10" Back Panel	BP1210CSW	077862
12x12" Back Panel	BP1212CSW	077865

“ The right product for the right environment. ”

SALES AND CUSTOMER SERVICE

Customers call

Toll Free: (866) 473-9462

www.ipexelectrical.com

About the IPEX Group of Companies

As leading suppliers of thermoplastic piping systems, the IPEX Group of Companies provides our customers with some of the world's largest and most comprehensive product lines. All IPEX products are backed by more than 50 years of experience. With state-of-the-art manufacturing facilities and distribution centers across North America, we have earned a reputation for product innovation, quality, end-user focus and performance.

Markets served by IPEX group products are:

- Electrical systems
- Telecommunications and utility piping systems
- PVC, CPVC, PP, PVDF, PE, ABS, and PEX pipe and fittings
- Industrial process piping systems
- Municipal pressure and gravity piping systems
- Plumbing and mechanical piping systems
- Electrofusion systems for gas and water
- Industrial, plumbing and electrical cements
- Irrigation systems

Products are manufactured by IPEX Electrical Inc.

JBox™ is a trademark of IPEX Branding Inc.

This literature is published in good faith and is believed to be reliable. However, it does not represent and/or warrant in any manner the information and suggestions contained in this brochure. Data presented is the result of laboratory tests and field experience.

A policy of ongoing product improvement is maintained. This may result in modifications of features and/or specifications without notice.



BRELJB IP150605C © 2015 IPEX EL0203C

