



TRAC-MASTER®

Avant Garde

WIREFORM® SERIES

T430, T431, T433, T435 and T437

Project: _____

Fixture Type: _____

Location: _____

Contact/Phone: _____

PRODUCT DESCRIPTION

Specially designed for halogen lamps. This high-styled, exposed lamp design provides a strong hi-tech statement.

Construction Square steel wire.

Aiming 90° vertical aiming capability and 358° rotation

- Two locking screws provided.

Labels UL listed, CSA certified.

Product specifications subject to change without notice.

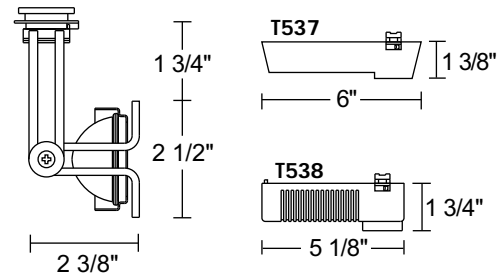


Low Voltage MR16

Socket Ceramic bi-pin.

Transformer T537 or T538 12V solid state electronic transformer with on/off switch • Must be ordered separately • Refer to specification sheet D1.2.1.

Catalog Number	Finish	Lamp
T430WH	White w/ White Adjusting Buttons	20-75W MR16
T430BL	Black w/ both Black and Red Adjusting Buttons	20-75W MR16
T430RD	Red w/ Black Adjusting Buttons	20-75W MR16
T430SL	Silver w/ Black Adjusting Buttons	20-75W MR16



ACCESSORIES

Cat. No.	Description	Cat. No.	Description	Cat. No.	Description
T74BL	Black Barn Doors	T551-5	Color Filters	T557	Prismatic Spraed Lens
T559	Linear Spread Lens	T5501-18	Dichroic Filters	T5520	Diffusion Lens
T5521	Uniformity Lens	T5522	UV Filter	T5559BL	Hexcell Louver

See specification sheet D1.2.2 for details.

Line Voltage PAR16

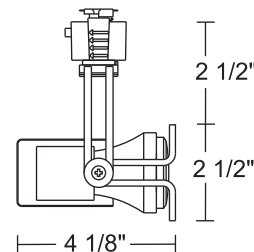
Socket Medium base porcelain with nickel plated copper screw shell.

Adapter Copper alloy contacts provide precise spring action - no arcing and will not take a set • True, positive electrical ground • On/off switch included

- Patented embossed polarity arrows on bottom of adapter • Spring-loaded positive latch with embossed polarity arrows secures trac light to trac
- "Pull-up" contact to up position for two-circuit application.

Accessories T74BL Barn Doors • See specification sheet D1.2.2 for details.

Catalog Number	Finish	Lamp
T431WH	White w/ White Adjusting Buttons	45-60W PAR16
T431BL	Black w/ both Black and Red Adjusting Buttons	45-60W PAR16
T431RD	Red w/ Black Adjusting Buttons	45-60W PAR16
T431SC	Satin Chrome w/ Black Adjusting Buttons	45-60W PAR16
T431SL	Silver w/ Black Adjusting Buttons	45-60W PAR16



TRAC-MASTER®

Avant Garde

WIREFORM® SERIES

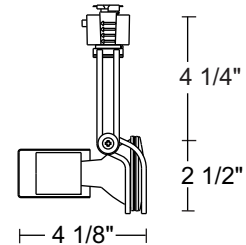
T430, T431, T433, T435 and T437

Line Voltage PAR20

Socket Medium base porcelain with nickel plated copper screw shell.

Adapter Refer to T431.

Catalog Number	Finish	Lamp
T433WH	White w/ White Adjusting Buttons	35-50W PAR20
T433BL	Black w/ both Black and Red Adjusting Buttons	35-50W PAR20
T433RD	Red w/ Black Adjusting Buttons	35-50W PAR20
T433SC	Satin Chrome w/ Black Adjusting Buttons	35-50W PAR20
T433SL	Silver w/ Black Adjusting Buttons	35-50W PAR20



ACCESSORIES

Cat. No.	Description	Cat. No.	Description	Cat. No.	Description	Cat. No.	Description
TW75BL	Black Barn Doors†	T561-6	Color Filters	T569BL	Cube Cell Louver	T5677	Prismatic Spread Lens
T5678	Linear Spread Lens	T5621	Uniformity Lens	T5622	UV Filter	T5618	Color Correction Filter

See specification sheet [D1.2.2](#) for details.

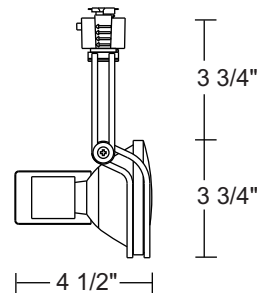
†Barn Doors accept Color Filters and Louvers.

Line Voltage PAR30

Socket Medium base porcelain with nickel plated copper screw shell.

Adapter Refer to T430.

Catalog Number	Finish	Lamp
T435WH	White w/ White Adjusting Buttons	35-75W PAR30
T435BL	Black w/ both Black and Red Adjusting Buttons	35-75W PAR30
T435RD	Red w/ Black Adjusting Buttons	35-75W PAR30
T435SC	Satin Chrome w/ Black Adjusting Buttons	35-75W PAR30
T435SL	Silver w/ Black Adjusting Buttons	35-75W PAR30



ACCESSORIES

Cat. No.	Description	Cat. No.	Description	Cat. No.	Description	Cat. No.	Description
TW71BL	Black Barn Doors†	T561-6	Color Filters	T569BL	Cube Cell Louver	T5677	Prismatic Spread Lens
T5678	Linear Spread Lens	T5621	Uniformity Lens	T5622	UV Filter	T5618	Color Correction Filter

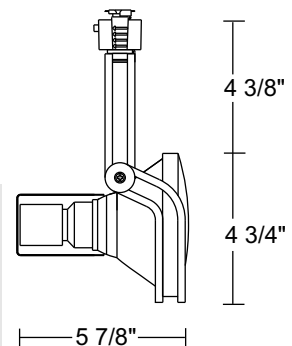
See specification sheet [D1.2.2](#) for details.

†Barn Doors accept Color Filters and Louvers.

Line Voltage PAR38

Socket Medium base porcelain with nickel plated copper screw shell.

Catalog Number	Finish	Lamp
T437WH	White w/ White Adjusting Buttons	45-250W PAR38
T437BL	Black w/ both Black and Red Adjusting Buttons	45-250W PAR38
T437RD	Red w/ Black Adjusting Buttons	45-250W PAR38
T437SL	Silver w/ Black Adjusting Buttons	45-250W PAR38



ACCESSORIES

Cat. No.	Description	Cat. No.	Description	Cat. No.	Description	Cat. No.	Description
TW72BL	Black Barn Doors†	T561-6	Color Filters	T579BL	Cube Cell Louver	T5777	Prismatic Spread Lens
T5778	Linear Spread Lens	T5721	Uniformity Lens	T5722	UV Filter	T5718	Color Correction Filter

See specification sheet [D1.2.2](#) for details.

†Barn Doors accept Color Filters and Louvers.



1300 S. Wolf Road • Des Plaines, IL 60018 • Phone (847) 827-9880 • Fax (847) 827-2925
 220 Chrysler Drive • Brampton, Ontario • Canada L6S 6B6 • Phone (905) 792-7335 • Fax (905) 792-0064
 Visit us at www.junolightinggroup.com

Printed in U.S.A. ©2010 Juno Lighting, LLC.