

FLEX 12

Project: _____

Fixture Type: _____

Location: _____

Contact/Phone: _____

Flexible Low Voltage Trac System

TRAC SECTIONS, CONNECTORS, MONOPOINTS & TOOLS

TF4, TF8, TFW4, TF23, TF24, TF30, TF40 & TF540

PRODUCT DESCRIPTION

Flex 12's unique trac construction consists of a flexible insulating core that separates two flat aluminum conductors. It can be installed in straight sections or curved in the field to suit most any application. It may be used in conjunction with 12V or 24V step down transformers, plus the wide variety of Flex 12 connectors, lampholders and pendants.

DIMENSIONS



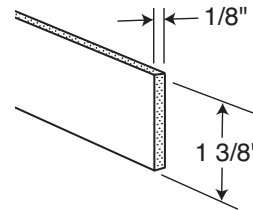
PRODUCT SPECIFICATIONS

Construction Parallel, flat aluminum conductors separated by a thin, flexible insulator • Available in 4' or 8' lengths • Standard lengths may be cut-to-length by installer • Natural aluminum finish.

Electrical Rated 25 amps at 12V (300VA) or 24V (600VA)
• Electrical feeds are ordered separately (see D5.1.1 and D5.1.2).

Labels UL listed, CSA certified • New York City Approved.

Product specifications subject to change without notice.



PRODUCT INSTALLATION

Trac may be installed in straight sections or field curved to conform to architectural surroundings • Trac may be curved at a 4" minimum radius, with 15" minimum radius at electrical feed or fixture locations • Trac may be cut-to-length in the field using shear or fine-tooth hacksaw • TF23 Straight Connector may be used to electrically and/or mechanically join sections of trac • A variety of ceiling mount accessories are offered for close-to-ceiling or suspended applications (see D5.1.1) • A variety of wall mount accessories are offered for wall installations (see D5.1.2).

PRODUCT CODES

Catalog Number	Description	Actual Length	Finish
TF4SL	4' Flexible Section	48"	Silver (Natural Aluminum)
TF8SL	8' Flexible Section	96"	Silver (Natural Aluminum)

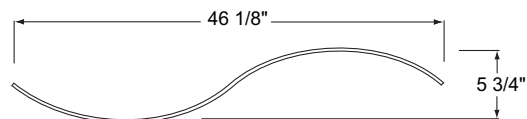
Wave Trac

TFW4SL

Wave Trac

Flex 12 Trac section, factory-formed into a sine wave pattern. Nominal 4' length. 25" bend radius. Natural aluminum finish.

Dimensions: 46 1/8" L x 5 3/4" W x 1 3/8" H

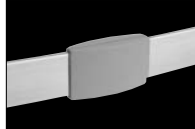


FLEX 12

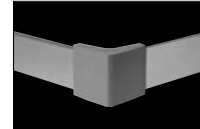
Flexible Low Voltage Trac System

**TRAC SECTIONS, CONNECTORS,
MONOPOINTS & TOOLS****TF4, TF8, TFW4, TF23, TF24, TF30, TF40 & TF540****Straight Connector****TF23SL**

Straight Connector
Electrically and/or mechanically joins sections
of Flex 12 Trac. 25 amp capacity. Silver finish.

**Right Angle Connector****TF24SL**

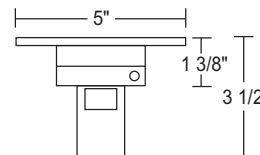
Right Angle Connector
Electrically and/or mechanically joins two sections
of Trac at a right angle (90°). 25 amp capacity.
Silver finish.

**End Cover****TF30SL**

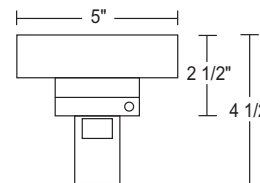
End Cover
Optional vinyl sleeve protects end of trac and
conceals sharp corners. Silver finish.

**Monopoint****TF40SL**

Monopoint
Designed to accept Flex 12 lampholders or pendants.
Operates with remote mounted transformer
(order separately). Canopy mounts over standard
4" ceiling outlet box. Silver finish.

**Monopoint with Integral Transformer****TF540SL**

Monopoint w/Integral Electronic Transformer
Designed to accept halogen Flex 12 lampholders or pendants.
Includes integral 12V, 50VA electronic transformer.
Mounts over standard 4" ceiling outlet box. Silver finish.

**TF540U-SL**

LED-Compatible Monopoint w/Integral Electronic Transformer
Same as above except compatible with both LED and halogen
fixtures.

Product specifications subject to change without notice.



1300 S. Wolf Road • Des Plaines, IL 60018 • Phone (847) 827-9880 • Fax (847) 827-2925
220 Chrysler Drive • Brampton, Ontario • Canada L6S 6B6 • Phone (905) 792-7335 • Fax (905) 792-0064
Visit us at www.junolightinggroup.com

Printed in U.S.A. ©2010 Juno Lighting, LLC.